

Burlingame Migration Patterns

American Community Survey
Summary Files

Produced by

Marin Economic Consulting
September 17, 2023

Jon Haveman, Principal

415-336-5705 or Jon@MarinEconomicConsulting.com

Contents

1. Overall Migration Flows	2
2. Demographics of Overall Migration Flows	4



1. Overall Migration Flows

Figure 1 - 1: Overall Movements of Residents

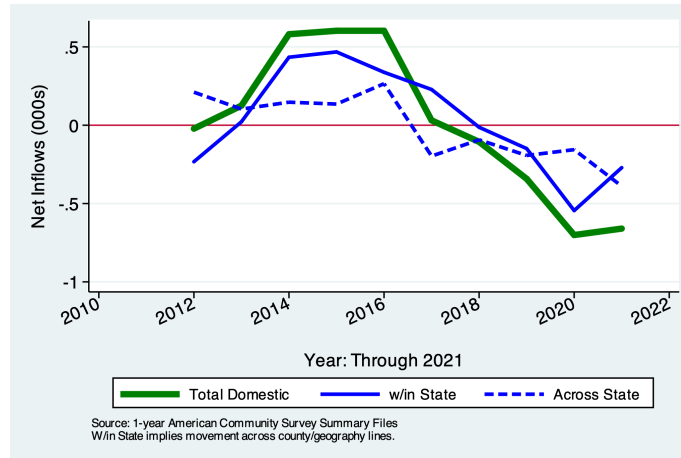


Table 1.1: Migration by Income

Category	Population	Net Inflows				From Abroad
		All Migration	W/in County	Between Counties	Across States	
No income	2,786	101	-7	45	-30	93
With income	22,468	-390	-506	197	-359	278
\$1 to \$9,999 or less	2,379	44	5	-48	53	34
\$10,000 to \$14,999	929	104	7	91	-39	45
\$15,000 to \$24,999	1,295	-5	13	10	-28	0
\$25,000 to \$34,999	1,320	21	45	2	-50	24
\$35,000 to \$49,999	2,048	19	28	39	-48	0
\$50,000 to \$64,999	1,685	-287	-203	77	-174	13
\$65,000 to \$74,999	1,185	-135	-107	-13	-15	0
\$75,000 or more	11,627	-151	-294	39	-58	162
All:	25,254	-289	-513	242	-389	371

Source: 2021 5-year American Community Survey, Summary File

Figure 1 - 2: Overall Movements of Low Income Residents
 Figure 1 - 3: Overall Movements of Low Income Residents

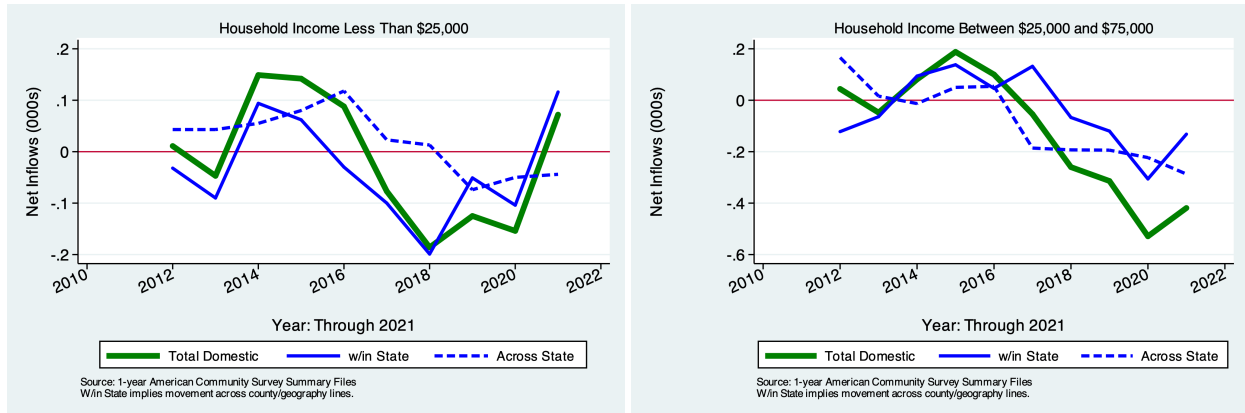
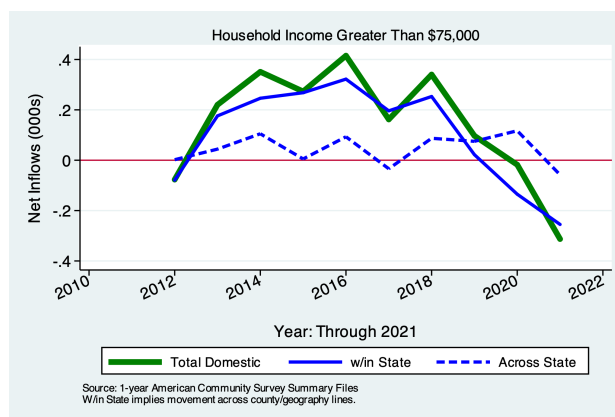


Figure 1 - 4: Overall Movements of Low Income Residents



2. Demographics of Migration Flows

Table 2.1: Migration by Marital Status

Category	Population	Net Inflows				From Abroad
		All Migration	Same State		Across States	
			W/in County	Between Counties		
Never married	7,818	−364	−118	5	−275	24
Now married, except separated	13,635	151	−269	219	−87	288
Divorced	1,993	−65	−87	12	−7	17
Separated	364	−3	7	10	−20	0
Widowed	1,444	−8	−46	−4	0	42
Total:	25,254	−289	−513	242	−389	371

Source: 2021 5-year American Community Survey, Summary File

Table 2.2: Migration by Tenure

Category	Population	Net Inflows				From Abroad
		All Migration	Same State		Across States	
			W/in County	Between Counties		
Householder lived in owner-occupied housing units	18, 343	−126	−39	−154	−174	241
Householder lived in renter-occupied housing units	12, 089	453	−383	691	−82	227
Total:	30, 432	327	−422	537	−256	468

Source: 2021 5-year American Community Survey, Summary File

Figure 2 - 1: Domestic Movements of Residents by Tenure

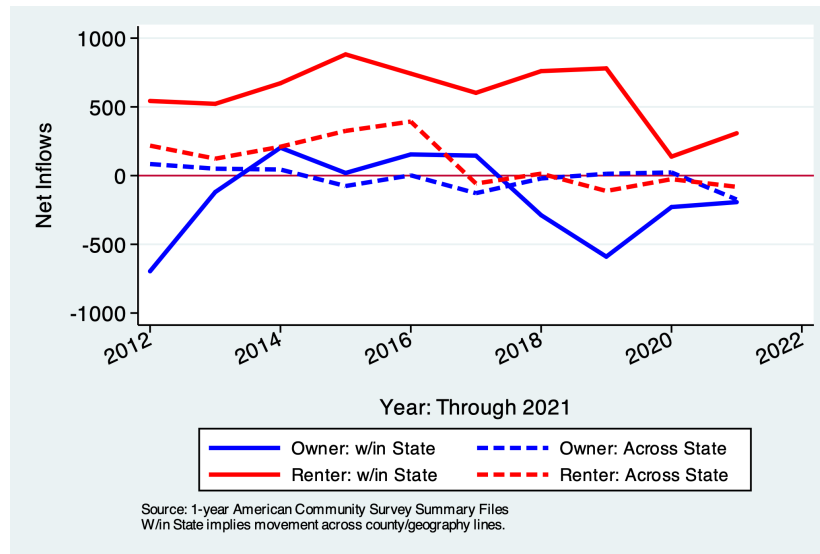


Table 2.3: Migration by Age

Category	Population	Net Inflows				From Abroad
		All Migration	Same State		Across States	
			W/in County	Between Counties		
1 to 4 years	1,644	136	47	47	28	14
5 to 17 years	5,157	108	16	67	−58	83
18 and 19 years	308	−259	−8	−132	−119	0
20 to 24 years	865	64	53	3	−16	24
25 to 29 years	1,815	−165	−207	97	−102	47
30 to 34 years	2,467	251	3	228	−12	32
35 to 39 years	2,710	−45	−135	−22	−48	160
40 to 44 years	2,497	58	−3	80	−19	0
45 to 49 years	2,519	−163	−118	−67	22	0
50 to 54 years	2,343	−60	−15	−41	−4	0
55 to 59 years	1,755	65	−47	37	37	38
60 to 64 years	2,011	−8	13	51	−79	7
65 to 69 years	1,381	71	−24	62	−30	63
70 to 74 years	1,047	−56	−30	−7	−19	0
75 years and over	2,386	−17	40	−57	0	0
Total Population:	30,905	−20	−415	346	−419	468

Source: 2021 5-year American Community Survey, Summary File

Table 2.4: Migration by Educational Attainment

Category	Population	Net Inflows				From Abroad
		All Migration	Same State		Across States	
			W/in County	Between Counties		
Less than high school graduate	1, 110	98	37	61	0	0
High school graduate (includes equiv)	2, 368	95	81	21	−7	0
Some college or assoc. degree	4, 528	−310	−168	94	−268	32
Bachelor's degree	8, 106	−138	−428	170	−5	125
Graduate or professional degree	6, 819	186	−45	15	26	190
Total:	22, 931	−69	−523	361	−254	347

Source: 2021 5-year American Community Survey, Summary File

Table 2.5: Median Income of Migration Flows

Flow	In-Migration	Out-Migration
Same House 1 Year Ago	80,556	80,556
Moved Within Same County	86,429	93,824
Moved to Different County, Same State	56,788	66,735
Moved Between States	66,289	56,324
Moved from Abroad	84,417	
Total Population:	79,136	78,582

Source: 2021 5-year American Community Survey, Summary File

Table 2.6: Median Age of Migration Flows

Flow	In-Migration	Out-Migration
Same House 1 Year Ago	43.2	43.2
Moved Within Same County	32.4	33.8
Moved to Different County, Same State	32.4	32.6
Moved Between States	30.1	27.7
Moved from Abroad	35.7	
Total Population:	41.1	41.2

Source: 2021 5-year American Community Survey, Summary File