

# Daly City Migration Patterns

---

American Community Survey  
Summary Files

Produced by

Marin Economic Consulting  
September 17, 2023

Jon Haveman, Principal

415-336-5705 or [Jon@MarinEconomicConsulting.com](mailto:Jon@MarinEconomicConsulting.com)

## Contents

1. Overall Migration Flows	2
2. Demographics of Overall Migration Flows	4



## 1. Overall Migration Flows

Figure 1 - 1: Overall Movements of Residents

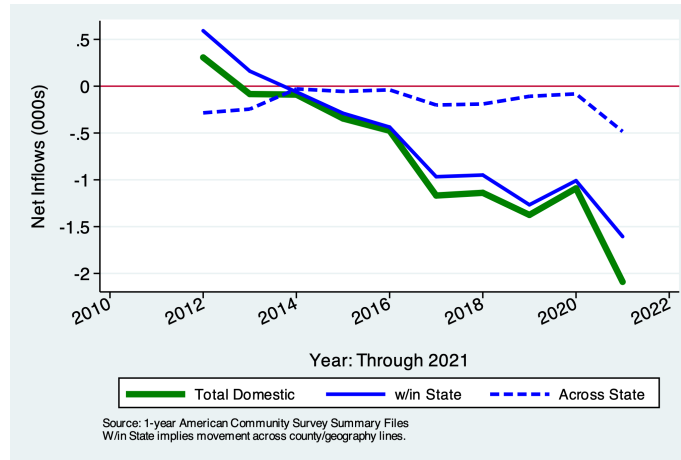


Table 1.1: Migration by Income

Category	Population	Net Inflows				From Abroad
		All Migration	Same State		Across States	
			W/in County	Between Counties		
No income	11, 299	−360	−163	−368	−168	339
With income	80, 247	−854	−685	−390	−316	537
\$1 to \$9,999 or less	10, 201	−430	−108	−287	−210	175
\$10,000 to \$14,999	5, 770	30	−50	−1	72	9
\$15,000 to \$24,999	10, 499	−171	−111	−81	−111	132
\$25,000 to \$34,999	8, 854	204	−10	66	54	94
\$35,000 to \$49,999	13, 298	75	65	12	−22	20
\$50,000 to \$64,999	9, 309	−99	−63	28	−64	0
\$65,000 to \$74,999	4, 625	41	−19	13	28	19
\$75,000 or more	17, 691	−504	−389	−140	−63	88
All:	91, 546	−1, 214	−848	−758	−484	876

Source: 2021 5-year American Community Survey, Summary File

Figure 1 - 2: Overall Movements of Low Income Residents  
 Figure 1 - 3: Overall Movements of Low Income Residents

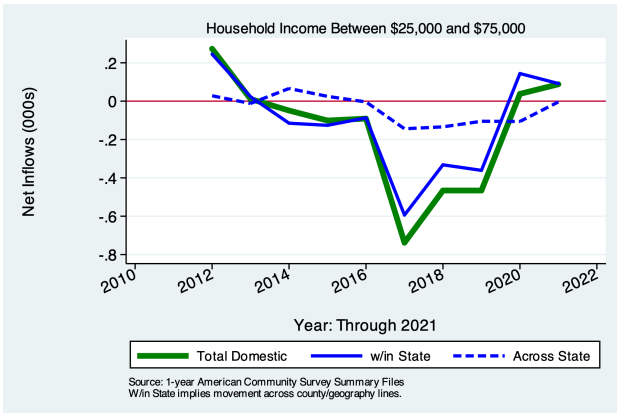
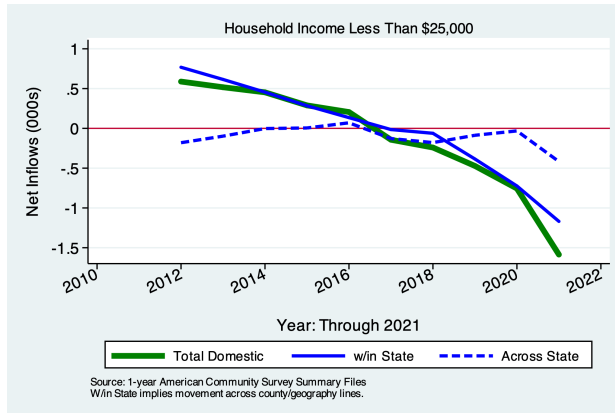
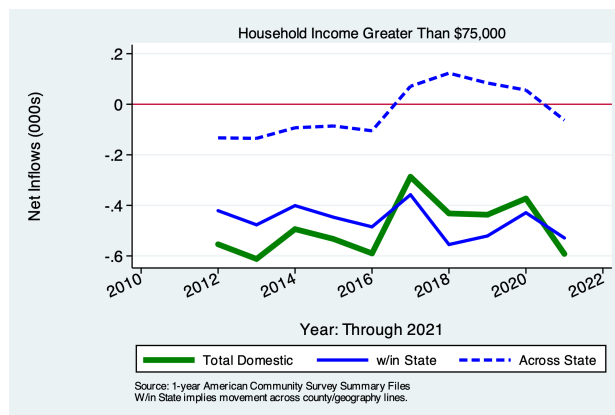


Figure 1 - 4: Overall Movements of Low Income Residents



## 2. Demographics of Migration Flows

**Table 2.1: Migration by Marital Status**

Category	Population	Net Inflows				
		All Migration	Same State		Across States	From Abroad
			W/in County	Between Counties		
Never married	35,650	-645	-384	-581	-94	414
Now married, except separated	42,741	-455	-218	-307	-341	411
Divorced	6,779	-114	-137	33	-28	18
Separated	1,271	83	-21	88	0	16
Widowed	5,105	-83	-88	9	-21	17
<b>Total:</b>	91,546	-1,214	-848	-758	-484	876

Source: 2021 5-year American Community Survey, Summary File

**Table 2.2: Migration by Tenure**

Category	Population	Net Inflows				
		All Migration	Same State		Across States	From Abroad
			W/in County	Between Counties		
Householder lived in owner-occupied housing units	61,281	-3,507	-287	-2,460	-943	183
Householder lived in renter-occupied housing units	38,744	-1,796	151	-988	-959	0
<b>Total:</b>	100,025	-5,303	-136	-3,448	-1,902	183

Source: 2021 1-year American Community Survey, Summary File

Figure 2 - 1: Domestic Movements of Residents by Tenure

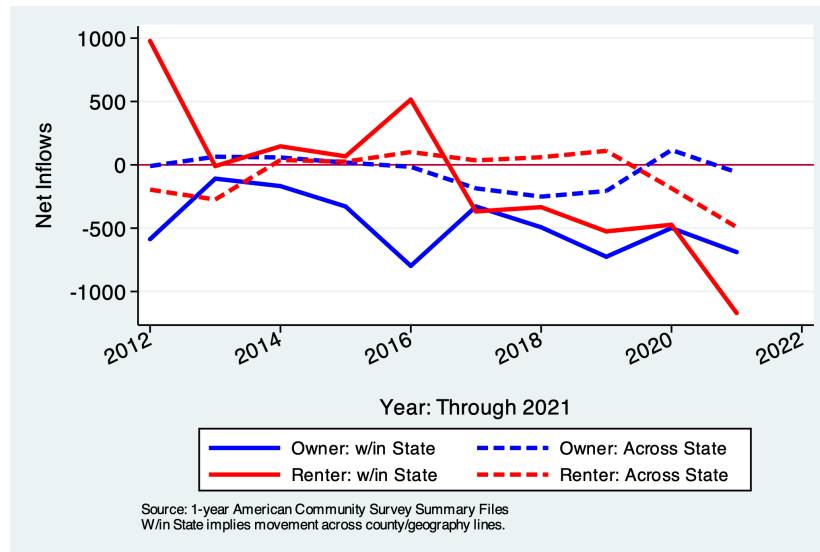


Table 2.3: Migration by Age

Category	Population	Net Inflows				From Abroad
		All Migration	Same State		Across States	
			W/in County	Between Counties		
1 to 4 years	3,489	−312	−62	−155	−95	0
5 to 17 years	12,126	−626	−56	−467	−103	0
18 and 19 years	2,398	−87	−2	−41	−44	0
20 to 24 years	7,486	322	−162	189	2	293
25 to 29 years	8,684	−308	−62	−263	−33	50
30 to 34 years	8,466	−596	−205	−262	−182	53
35 to 39 years	7,870	−29	−58	79	−50	0
40 to 44 years	6,773	−105	−44	−98	−30	67
45 to 49 years	6,767	−48	62	−98	−29	17
50 to 54 years	6,223	114	−78	160	−12	44
55 to 59 years	7,591	−65	−88	−23	0	46
60 to 64 years	6,464	−182	−22	−189	−19	48
65 to 69 years	6,474	−88	−71	−151	−16	150
70 to 74 years	4,923	43	−15	15	0	43
75 years and over	8,133	103	−59	118	−21	65
<b>Total Population:</b>	103,867	−1,864	−922	−1,186	−632	876

Source: 2021 5-year American Community Survey, Summary File

Table 2.4: Migration by Educational Attainment

Category	Population	Net Inflows				From Abroad
		All Migration	Same State		Across States	
			W/in County	Between Counties		
Less than high school graduate	9,987	−40	−28	−170	−32	190
High school graduate (includes equiv)	16,674	−80	−26	22	−127	51
Some college or assoc. degree	22,116	−530	−92	−465	−92	119
Bachelor's degree	22,691	−437	−380	−121	−120	184
Graduate or professional degree	6,900	−74	−114	22	−21	39
<b>Total:</b>	78,368	−1,161	−640	−712	−392	583

Source: 2021 5-year American Community Survey, Summary File

**Table 2.5: Median Income of Migration Flows**

Flow	In-Migration	Out-Migration
Same House 1 Year Ago	39,027	39,027
Moved Within Same County	42,876	41,993
Moved to Different County, Same State	26,659	36,633
Moved from Abroad	17,488	
<b>Total Population:</b>	38,613	38,856

Source: 2021 1-year American Community Survey, Summary File

**Table 2.6: Median Age of Migration Flows**

Flow	In-Migration	Out-Migration
Same House 1 Year Ago	45.5	45.5
Moved Within Same County	32.6	32.9
Moved to Different County, Same State	25.8	29.2
Moved from Abroad	69.9	
<b>Total Population:</b>	44.6	42.6

Source: 2021 1-year American Community Survey, Summary File