

San Bruno Migration Patterns

American Community Survey
Summary Files

Produced by

Marin Economic Consulting
September 17, 2023

Jon Haveman, Principal

415-336-5705 or Jon@MarinEconomicConsulting.com

Contents

1. Overall Migration Flows	2
2. Demographics of Overall Migration Flows	4



1. Overall Migration Flows

Figure 1 - 1: Overall Movements of Residents

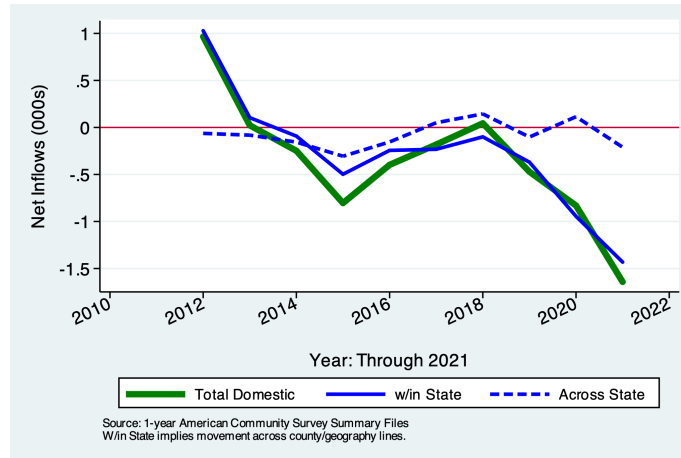


Table 1.1: Migration by Income

Category	Population	All Migration	Net Inflows		Across States	From Abroad
			W/in County	Between Counties		
No income	3,645	-266	-125	-245	-5	109
With income	33,267	-1,062	-676	-386	-205	205
\$1 to \$9,999 or less	3,802	-324	-118	-277	-78	149
\$10,000 to \$14,999	2,186	-25	-86	4	57	0
\$15,000 to \$24,999	3,582	160	-75	221	-3	17
\$25,000 to \$34,999	3,168	-126	-147	2	9	10
\$35,000 to \$49,999	3,847	-252	-130	-21	-101	0
\$50,000 to \$64,999	3,561	-53	54	-74	-33	0
\$65,000 to \$74,999	1,665	-263	-89	-176	2	0
\$75,000 or more	11,456	-179	-85	-65	-58	29
All:	36,912	-1,328	-801	-631	-210	314

Source: 2021 5-year American Community Survey, Summary File

Figure 1 - 2: Overall Movements of Low Income Residents

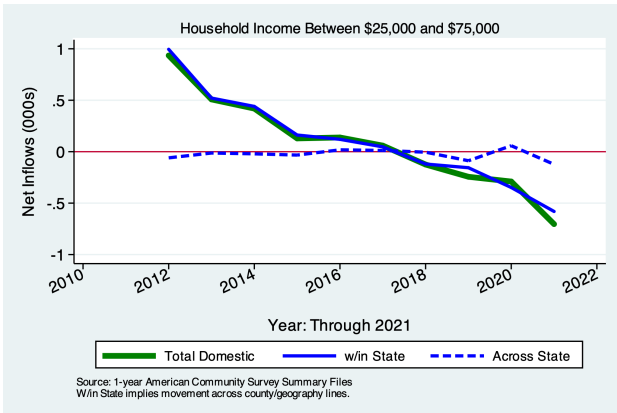
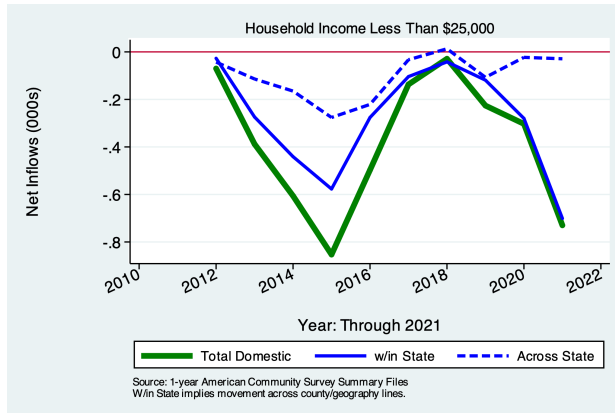
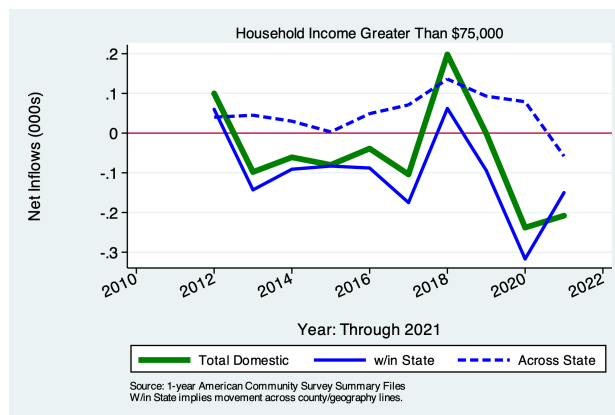


Figure 1 - 4: Overall Movements of Low Income Residents



2. Demographics of Migration Flows

Table 2.1: Migration by Marital Status

Category	Population	Net Inflows				
		All Migration	Same State		Across States	From Abroad
			W/in County	Between Counties		
Never married	12,672	206	-128	59	35	240
Now married, except separated	18,516	-1,432	-646	-638	-212	64
Divorced	3,593	-189	-39	-102	-48	0
Separated	442	49	35	14	0	0
Widowed	1,689	38	-23	36	15	10
Total:	36,912	-1,328	-801	-631	-210	314

Source: 2021 5-year American Community Survey, Summary File

Table 2.2: Migration by Tenure

Category	Population	Net Inflows				
		All Migration	Same State		Across States	From Abroad
			W/in County	Between Counties		
Householder lived in owner-occupied housing units	27,499	-755	-152	-505	-288	190
Householder lived in renter-occupied housing units	15,491	-635	-455	-358	54	124
Total:	42,990	-1,390	-607	-863	-234	314

Source: 2021 5-year American Community Survey, Summary File

Figure 2 - 1: Domestic Movements of Residents by Tenure

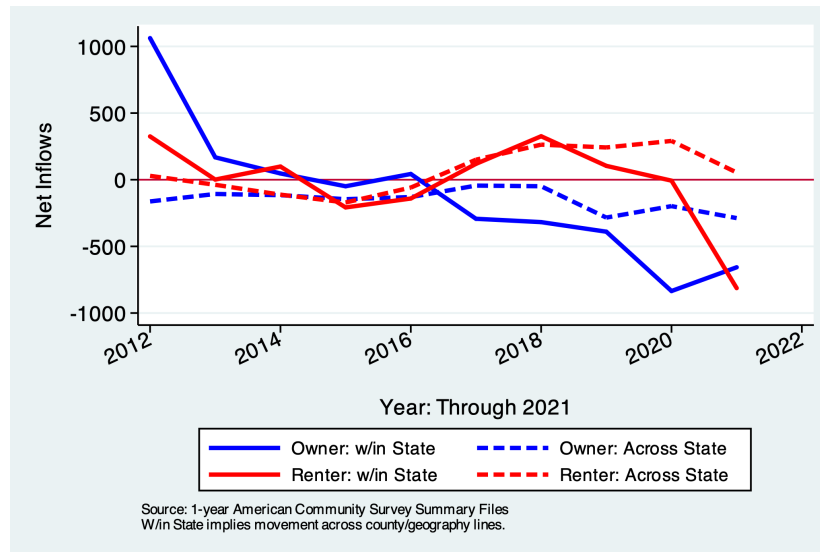


Table 2.3: Migration by Age

Category	Population	Net Inflows				
		All Migration	Same State		Across States	From Abroad
			W/in County	Between Counties		
1 to 4 years	1,774	-305	-44	-236	-25	0
5 to 17 years	5,987	-214	69	-220	-70	7
18 and 19 years	942	-168	-78	-79	-51	40
20 to 24 years	2,614	181	-134	-10	162	163
25 to 29 years	3,592	357	124	91	73	69
30 to 34 years	3,503	-297	-47	-221	-29	0
35 to 39 years	3,920	-408	-196	-80	-132	0
40 to 44 years	2,893	-41	-36	4	-9	0
45 to 49 years	2,826	-132	11	-54	-89	0
50 to 54 years	2,940	-229	-139	-80	-21	11
55 to 59 years	2,732	-203	-160	-56	13	0
60 to 64 years	2,810	-104	-40	-27	-40	3
65 to 69 years	2,841	11	0	37	-37	11
70 to 74 years	1,571	-135	-28	-95	-12	0
75 years and over	2,497	-69	-65	4	-18	10
Total Population:	43,442	-1,756	-763	-1,022	-285	314

Source: 2021 5-year American Community Survey, Summary File

Table 2.4: Migration by Educational Attainment

Category	Population	Net Inflows				
		All Migration	Same State		Across States	From Abroad
			W/in County	Between Counties		
Less than high school graduate	3,373	-74	-59		-38	2
High school graduate (includes equiv)	5,688	-235	-169		-8	22
Some college or assoc. degree	9,330	-645	-233		-92	11
Bachelor's degree	9,471	-105	50		-207	63
Graduate or professional degree	4,263	-191	-165		44	6
Total:	32,125	-1,250	-576	-477	-301	104

Source: 2021 5-year American Community Survey, Summary File

Table 2.5: Median Income of Migration Flows

Flow	In-Migration	Out-Migration
Same House 1 Year Ago	50, 149	50, 149
Moved Within Same County	53, 311	47, 198
Moved to Different County, Same State	41, 625	59, 129
Moved from Abroad	8, 776	
Total Population:	50, 177	50, 047

Source: 2021 5-year American Community Survey, Summary File

Table 2.6: Median Age of Migration Flows

Flow	In-Migration	Out-Migration
Same House 1 Year Ago	41.0	41.0
Moved Within Same County	30.3	35.2
Moved to Different County, Same State	30.1	30.7
Moved Between States	27.3	35.2
Moved from Abroad	24.3	
Total Population:	39.3	39.4

Source: 2021 5-year American Community Survey, Summary File