

San Mateo Migration Patterns

American Community Survey
Summary Files

Produced by

Marin Economic Consulting
September 17, 2023

Jon Haveman, Principal

415-336-5705 or Jon@MarinEconomicConsulting.com

Contents

1. Overall Migration Flows	2
2. Demographics of Overall Migration Flows	4



1. Overall Migration Flows

Figure 1 - 1: Overall Movements of Residents

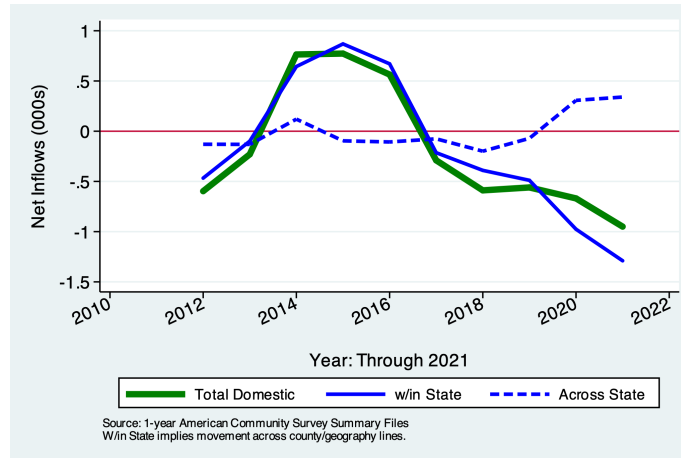


Table 1.1: Migration by Income

Category	Population	Net Inflows				From Abroad
		All Migration	W/in County	Between Counties	Across States	
No income	9,160	-61	-62	-452	-134	587
With income	77,140	46	-705	-71	474	348
\$1 to \$9,999 or less	8,257	-72	-70	21	-83	60
\$10,000 to \$14,999	4,619	225	115	31	25	54
\$15,000 to \$24,999	6,786	173	-11	71	74	39
\$25,000 to \$34,999	6,276	-347	-318	-90	48	13
\$35,000 to \$49,999	6,797	-374	-320	-95	4	37
\$50,000 to \$64,999	5,713	-176	3	-112	-78	11
\$65,000 to \$74,999	3,656	163	99	92	-28	0
\$75,000 or more	35,036	454	-203	11	512	134
All:	86,300	-15	-767	-523	340	935

Source: 2021 5-year American Community Survey, Summary File

Figure 1 - 2: Overall Movements of Low Income Residents
 Figure 1 - 3: Overall Movements of Low Income Residents

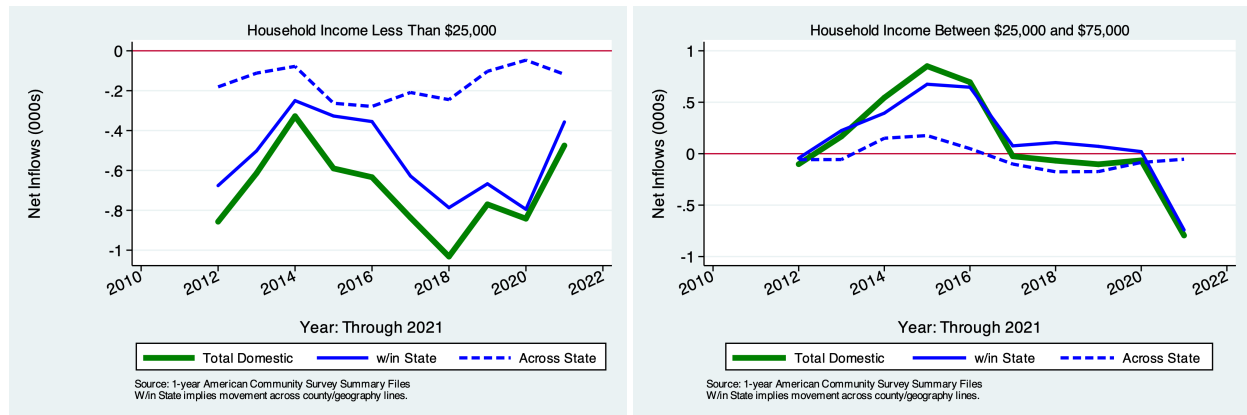
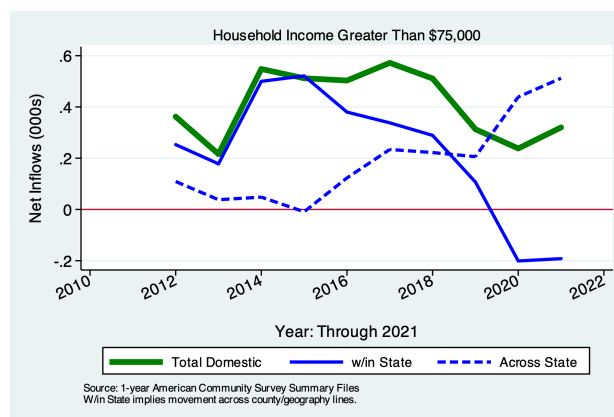


Figure 1 - 4: Overall Movements of Low Income Residents



2. Demographics of Migration Flows

Table 2.1: Migration by Marital Status

Category	Population	Net Inflows				From Abroad
		All Migration	Same State		Across States	
			W/in County	Between Counties		
Never married	28,447	−381	−303	−950	428	444
Now married, except separated	44,307	547	−558	664	1	440
Divorced	7,643	−187	67	−198	−107	51
Separated	1,061	−169	−86	−101	18	0
Widowed	4,842	175	113	62	0	0
Total:	86,300	−15	−767	−523	340	935

Source: 2021 5-year American Community Survey, Summary File

Table 2.2: Migration by Tenure

Category	Population	Net Inflows				Across States	From Abroad
		All Migration	Same State				
			W/in County	Between Counties			
Householder lived in owner-occupied housing units	55,646	−205	269	−609	−318	453	
Householder lived in renter-occupied housing units	44,089	−1,129	−1,214	−780	865	0	
Total:	99,735	−1,334	−945	−1,389	547	453	

Source: 2021 1-year American Community Survey, Summary File

Figure 2 - 1: Domestic Movements of Residents by Tenure

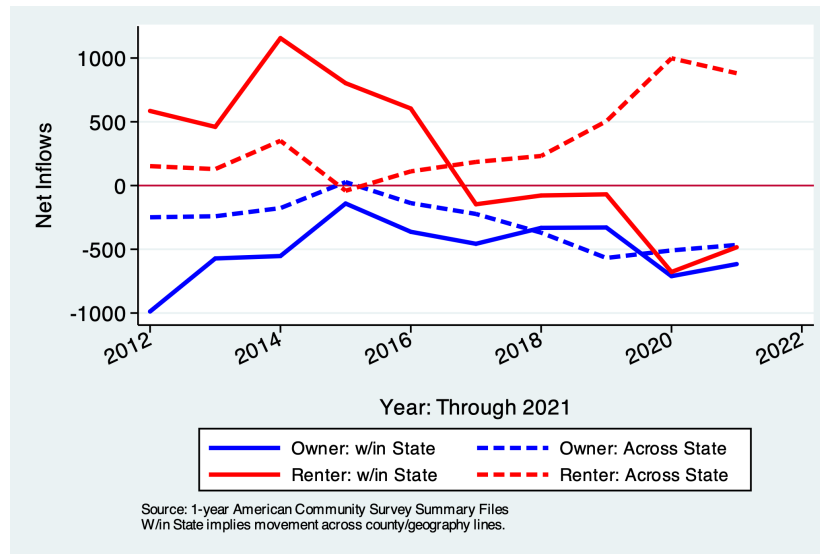


Table 2.3: Migration by Age

Category	Population	Net Inflows				
		All Migration	Same State		Across States	From Abroad
			W/in County	Between Counties		
1 to 4 years	5, 278	85	-12	-25	90	32
5 to 17 years	14, 630	-52	-80	99	-145	74
18 and 19 years	1, 613	-84	35	-162	-100	143
20 to 24 years	5, 427	-114	-50	-375	188	123
25 to 29 years	8, 106	345	-104	-196	539	106
30 to 34 years	10, 249	8	-241	67	112	70
35 to 39 years	9, 629	612	94	317	-65	266
40 to 44 years	6, 538	-118	-35	-153	20	50
45 to 49 years	6, 673	-360	-184	-105	-71	0
50 to 54 years	6, 640	-86	-125	163	-127	3
55 to 59 years	6, 135	-51	-62	29	-107	89
60 to 64 years	6, 028	-103	-45	-100	7	35
65 to 69 years	4, 385	-160	-119	-35	-15	9
70 to 74 years	3, 974	94	104	8	-18	0
75 years and over	8, 059	-82	-58	-14	-15	5
Total Population:	103, 364	-66	-882	-482	293	1, 005

Source: 2021 5-year American Community Survey, Summary File

Table 2.4: Migration by Educational Attainment

Category	Population	Net Inflows				
		All Migration	Same State		Across States	From Abroad
			W/in County	Between Counties		
Less than high school graduate	8, 143	188	-25	136	52	25
High school graduate (includes equiv)	8, 931	-101	-203	-110	104	108
Some college or assoc. degree	14, 519	-1, 012	-464	-549	1	0
Bachelor's degree	23, 551	-254	-722	-133	562	39
Graduate or professional degree	19, 934	-599	189	-965	137	40
Total:	75, 078	-1, 778	-1, 225	-1, 621	856	212

Source: 2021 1-year American Community Survey, Summary File

Table 2.5: Median Income of Migration Flows

Flow	In-Migration	Out-Migration
Same House 1 Year Ago	65,136	65,136
Moved Within Same County	82,807	65,527
Moved to Different County, Same State	62,446	51,681
Moved Between States	97,542	79,284
Moved from Abroad	4,840	
Total Population:	66,693	64,027

Source: 2021 1-year American Community Survey, Summary File

Table 2.6: Median Age of Migration Flows

Flow	In-Migration	Out-Migration
Same House 1 Year Ago	41.7	41.7
Moved Within Same County	34.4	34.2
Moved to Different County, Same State	30.2	32.3
Moved Between States	30.7	31.2
Moved from Abroad	23.1	
Total Population:	38.3	38.2

Source: 2021 1-year American Community Survey, Summary File