

South San Francisco Migration Patterns

American Community Survey
Summary Files

Produced by

Marin Economic Consulting
September 17, 2023

Jon Haveman, Principal

415-336-5705 or Jon@MarinEconomicConsulting.com

Contents

1. Overall Migration Flows	2
2. Demographics of Overall Migration Flows	4



1. Overall Migration Flows

Figure 1 - 1: Overall Movements of Residents

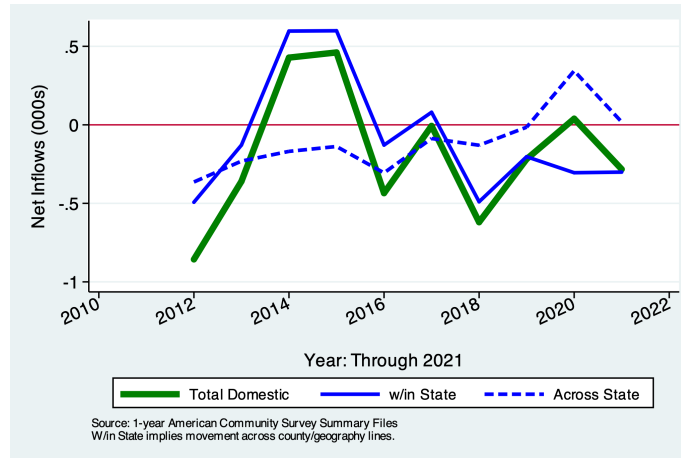


Table 1.1: Migration by Income

Category	Population	Net Inflows				From Abroad
		All Migration	W/in County	Between Counties	Across States	
No income	6,247	-21	-13	-151	11	132
With income	50,159	55	317	-454	7	185
\$1 to \$9,999 or less	5,213	-230	38	-263	-83	78
\$10,000 to \$14,999	3,899	-58	6	-67	-68	71
\$15,000 to \$24,999	6,570	558	150	278	113	17
\$25,000 to \$34,999	5,290	193	65	-1	129	0
\$35,000 to \$49,999	6,321	-250	-46	-42	-162	0
\$50,000 to \$64,999	5,134	162	69	-121	195	19
\$65,000 to \$74,999	2,346	-124	-29	-43	-52	0
\$75,000 or more	15,386	-196	64	-195	-65	0
All:	56,406	34	304	-605	18	317

Source: 2021 5-year American Community Survey, Summary File

Figure 1 - 2: Overall Movements of Low Income Residents
 Figure 1 - 3: Overall Movements of Low Income Residents

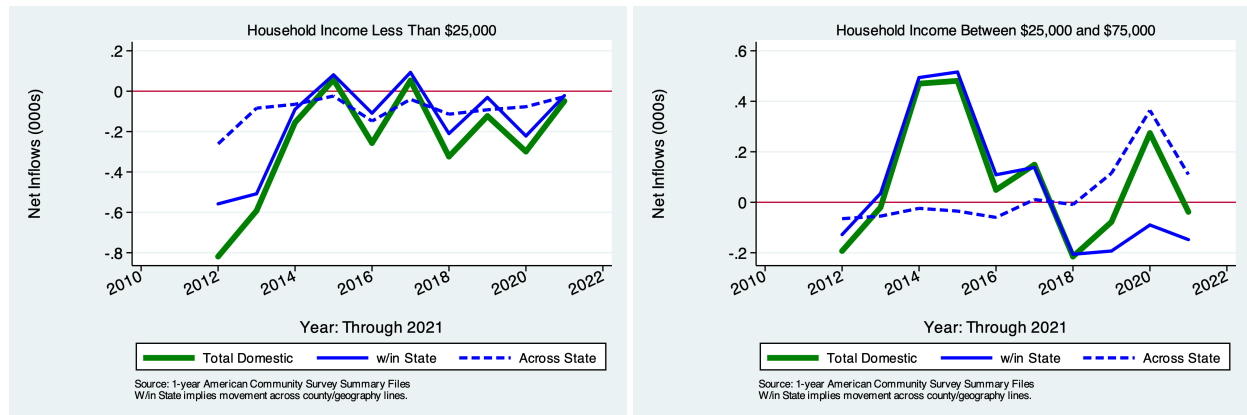
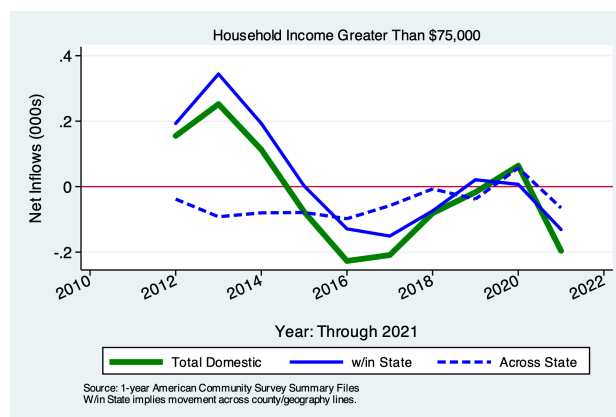


Figure 1 - 4: Overall Movements of Low Income Residents



2. Demographics of Migration Flows

Table 2.1: Migration by Marital Status

Category	Population	Net Inflows				From Abroad
		All Migration	Same State		Across States	
			W/in County	Between Counties		
Never married	18,810	161	125	−140	105	71
Now married, except separated	29,260	132	393	−412	−14	165
Divorced	4,535	−152	−182	39	−26	17
Separated	790	−42	−8	−38	4	0
Widowed	3,011	−65	−24	−54	−51	64
Total:	56,406	34	304	−605	18	317

Source: 2011 5-year American Community Survey, Summary File

Table 2.2: Migration by Tenure

Category	Population	Net Inflows				Across States	From Abroad
		All Migration	Same State				
			W/in County	Between Counties			
Householder lived in owner-occupied housing units	41, 105	−242	235	−269	−375	167	
Householder lived in renter-occupied housing units	24, 141	69	−63	−320	306	146	
Total:	65, 246	−173	172	−589	−69	313	

Source: 2011 5-year American Community Survey, Summary File

Figure 2 - 1: Domestic Movements of Residents by Tenure

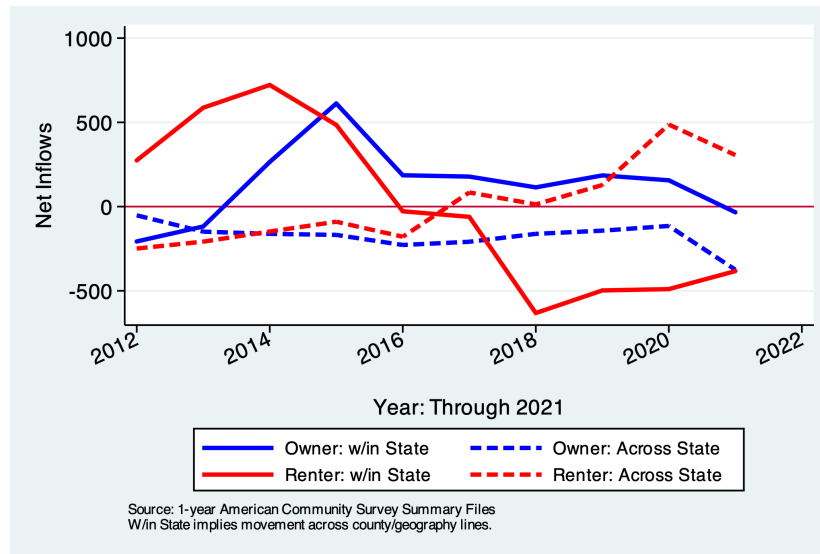


Table 2.3: Migration by Age

Category	Population	Net Inflows				From Abroad
		All Migration	Same State		Across States	
			W/in County	Between Counties		
1 to 4 years	2,701	−185	−11	−51	−123	0
5 to 17 years	8,696	−419	−221	−198	0	0
18 and 19 years	1,477	−252	33	−245	−40	0
20 to 24 years	3,542	392	67	88	189	48
25 to 29 years	4,419	−200	−77	−117	−25	19
30 to 34 years	5,155	−29	19	−25	−23	0
35 to 39 years	4,867	−163	−36	−2	−125	0
40 to 44 years	4,512	−175	−81	−80	−31	17
45 to 49 years	4,972	328	24	39	261	4
50 to 54 years	4,825	14	123	−100	−9	0
55 to 59 years	5,010	67	116	−66	8	9
60 to 64 years	4,793	−58	98	35	−196	5
65 to 69 years	3,929	−8	26	−79	17	28
70 to 74 years	2,744	49	13	−20	0	56
75 years and over	4,321	53	−59	−11	−8	131
Total Population:	65,963	−586	34	−832	−105	317

Source: 2021 5-year American Community Survey, Summary File

Table 2.4: Migration by Educational Attainment

Category	Population	Net Inflows				From Abroad
		All Migration	Same State		Across States	
			W/in County	Between Counties		
Less than high school graduate	5,691	120	108	−90	−13	115
High school graduate (includes equiv)	10,358	−245	47	−124	−191	23
Some college or assoc. degree	14,487	−427	−97	−237	−132	39
Bachelor's degree	13,467	426	88	−51	311	78
Graduate or professional degree	5,544	4	20	76	−106	14
Total:	49,547	−122	166	−426	−131	269

Source: 2021 5-year American Community Survey, Summary File

Table 2.5: Median Income of Migration Flows

Flow	In-Migration	Out-Migration
Same House 1 Year Ago	44, 279	44, 279
Moved Within Same County	46, 629	50, 408
Moved to Different County, Same State	34, 200	39, 630
Moved Between States	52, 626	48, 034
Moved from Abroad	10, 684	
Total Population:	43, 967	44, 494

Source: 2011 5-year American Community Survey, Summary File

Table 2.6: Median Age of Migration Flows

Flow	In-Migration	Out-Migration
Same House 1 Year Ago	43.1	43.1
Moved Within Same County	36.6	33.1
Moved to Different County, Same State	29.5	28.6
Moved Between States	32.2	33.7
Moved from Abroad	73.9	
Total Population:	42.2	41.5

Source: 2011 5-year American Community Survey, Summary File