

Broader LA Weekly Wages

Focus on Post-Recession Recovery

Q 3 – 2015 Update

Produced by:

Marin Economic Consulting

March 15, 2016

Jon Haveman, Principal

415-336-5705 or Jon@MarinEconomicConsulting.com

Contents

Descriptions and References	2
Overview of Wage Changes Since Onset of Recession	3
Weekly Wages Over Time	4
Graphical Display of Weekly Wage Evolution by Industry (Super Sector)	5

Descriptions and References

Regional Definition: The Broader LA region consists of: Los Angeles, Orange, and Ventura counties in Southern California.

The contents of this report illustrate the evolution of Broader LA wage patterns over time. This report presents:

Wages: Average weekly wages for the industry in the region. They are inflation adjusted to current dollars using: Consumer Price Index for All Urban Consumers: All Items, from the FRED Database maintained by the St. Louis Federal Reserve Bank.

The data underlying this report are from the Bureau of Labor Statistics: Quarterly Census of Employment and Wages (QCEW). These data are available on a quarterly basis, generally with a 5 month lag from the end of the quarter to the release of the data.

QCEW: The Quarterly Census of Employment and Wages (QCEW) program publishes a quarterly count of employment and wages reported by employers covering 98 percent of U.S. jobs, available at the county, MSA, state and national levels by industry. <http://www.bls.gov/cew/home.htm>

Time Period: The data extend from Q1-1990 through Q3 - 2015

Seasonality: There is a significant seasonal component to many industries. The QCEW data are not seasonally adjusted. Rather than seasonally adjusting the data, most comparisons in this report are between the same quarter in different years. The data presented are therefore the actual employment levels and wages (inflation adjusted) compared across years.

A particular focus of this report is on the post-Great Recession recovery. This is accomplished by comparing the most recent quarter of data to the same quarter in 2007, the last non-recessionary year for most of California and the United States.

Notes:

Notes: There are occasions where the data displayed seem to reflect implausible increases in either employment or wages. These changes are as reported in the QCEW data. For a closer look at these changes, please contact: Jon@MarinEconomicConsulting.com

Overview of Wage Changes Since the Onset of the Great Recession

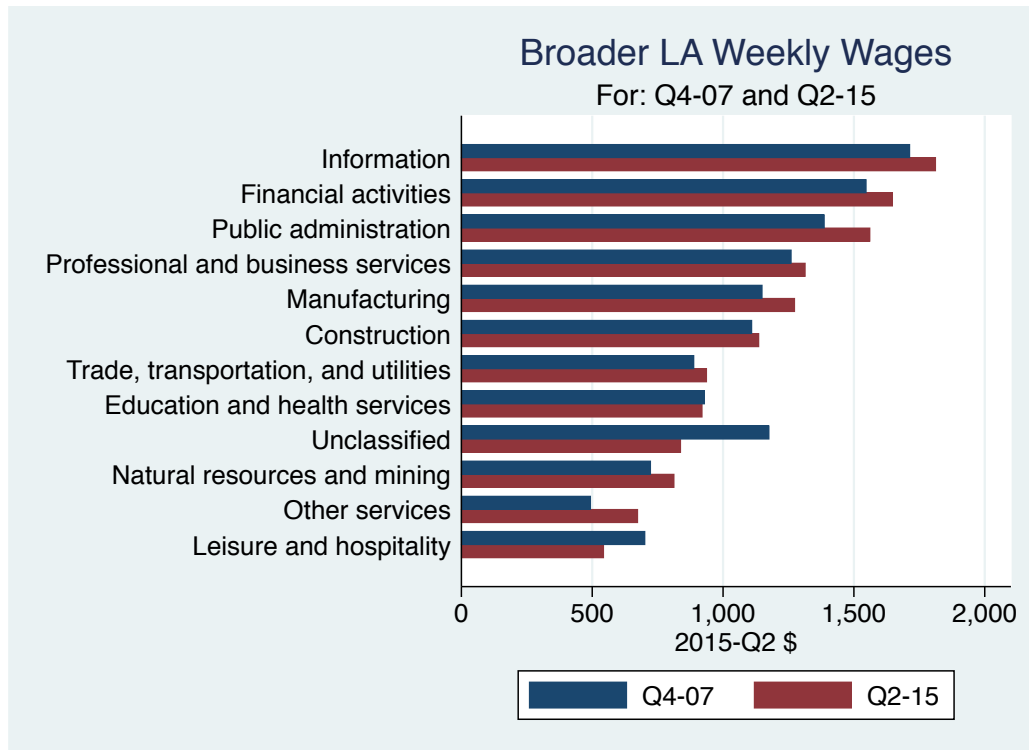


Table: Quarterly Summary for Q 3 – 2015

Sector	Levels in Q 3 – 2015		Change vs Q 3 in 2007					
	Employment	Wages	Relative to:		Employment	Wages	Relative to:	
			Bay	U.S.			Bay	U.S.
Information	234,668	1,884.6	0.4	1.1	-20,541	427.06	-0.20	-0.08
Financial activities	348,913	1,684.0	0.8	1.2	-43,697	249.67	-0.06	-0.03
Public administration	222,400	1,642.3	1.0	1.4	4,939	296.31	0.01	0.02
Professional and business services	914,863	1,300.3	0.6	1.0	-7,998	270.88	-0.05	0.02
Manufacturing	544,536	1,233.2	0.5	1.1	-114,401	219.64	-0.01	0.03
Construction	236,636	1,162.6	0.8	1.1	-51,746	189.23	-0.03	-0.04
All industries	6,050,685	1,069.0	0.7	1.1	68,347	150.03	-0.08	-0.03
Trade, transportation, and utilities	1,179,436	923.5	0.8	1.1	-39,751	112.97	-0.04	-0.03
Education and health services	1,339,766	922.2	0.8	1.0	300,588	56.30	-0.06	-0.10
Natural resources and mining	36,530	809.1	1.0	0.8	-5,100	110.57	-0.00	-0.06
Unclassified	41,677	799.8	0.7	0.9	41,541	24.23	-0.25	-0.07
Other services	201,791	688.1	0.9	1.0	-115,925	207.73	0.04	0.13
Leisure and hospitality	747,199	548.5	1.0	1.3	120,355	69.56	-0.07	-0.04
Total	12,099,101							

Source: BLS, QCEW; Calculations by Marin Economic Consulting

Weekly Wages Over Time

Table: Summary of Weekly Wages versus the Bay Area as A Whole

Sector	Q 3 – 2015		Relative Wages: Q 3 of Each Year					
	Employment	Wages	1990	1995	2001	2004	2007	2015
Information	234,668	1,884.6	1.07	0.93	0.77	0.72	0.65	0.45
Financial activities	348,913	1,684.0	0.98	0.93	0.85	0.89	0.82	0.76
Public administration	222,400	1,642.3	1.00	1.04	0.97	1.00	0.97	0.98
Professional and business services	914,863	1,300.3	0.91	0.76	0.65	0.68	0.66	0.62
Manufacturing	544,536	1,233.2	0.76	0.64	0.59	0.58	0.51	0.49
Construction	236,636	1,162.6	0.92	0.88	0.77	0.85	0.85	0.82
All industries	6,050,685	1,069.0	0.93	0.86	0.76	0.79	0.74	0.67
Trade, transportation, and utilities	1,179,436	923.5	0.93	0.94	0.85	0.87	0.85	0.81
Education and health services	1,339,766	922.2	1.03	0.96	0.88	0.86	0.87	0.80
Natural resources and mining	36,530	809.1	1.03	1.00	0.81	1.10	1.00	1.00
Unclassified	41,677	799.8			1.03	0.86	0.96	0.71
Other services	201,791	688.1	0.99	0.91	0.79	0.80	0.83	0.87
Leisure and hospitality	747,199	548.5	1.13	1.15	1.05	1.12	1.06	0.99

Source: BLS, QCEW; Calculations by Marin Economic Consulting

Table: Summary of Weekly Wages versus California as A Whole

Sector	Q 3 – 2015		Relative Wages: Q 3 of Each Year					
	Employment	Wages	1990	1995	2001	2004	2007	2015
Information	234,668	1,884.6	1.08	1.03	0.96	0.94	0.92	0.72
Financial activities	348,913	1,684.0	1.06	1.07	1.05	1.07	1.05	1.02
Public administration	222,400	1,642.3	1.05	1.11	1.08	1.09	1.08	1.09
Professional and business services	914,863	1,300.3	1.01	0.95	0.90	0.93	0.92	0.88
Manufacturing	544,536	1,233.2	0.95	0.89	0.86	0.87	0.83	0.80
Construction	236,636	1,162.6	1.04	1.01	0.97	1.01	1.00	0.98
All industries	6,050,685	1,069.0	1.05	1.03	0.99	1.01	0.99	0.94
Trade, transportation, and utilities	1,179,436	923.5	1.03	1.05	1.00	1.01	1.01	0.99
Education and health services	1,339,766	922.2	1.05	1.03	1.00	0.99	0.99	0.95
Natural resources and mining	36,530	809.1	1.47	1.42	1.32	1.39	1.28	1.18
Unclassified	41,677	799.8			1.36	0.86	0.89	0.89
Other services	201,791	688.1	1.03	1.00	0.96	0.96	0.97	0.99
Leisure and hospitality	747,199	548.5	1.14	1.18	1.12	1.14	1.11	1.09

Source: BLS, QCEW; Calculations by Marin Economic Consulting

Table: Summary of Weekly Wages versus the United States as A Whole

Sector	Q 3 – 2015		Relative Wages: Q 3 of Each Year					
	Employment	Wages	1990	1995	2001	2004	2007	2015
Information	234,668	1,884.6	1.25	1.16	1.22	1.21	1.18	1.09
Financial activities	348,913	1,684.0	1.15	1.17	1.20	1.25	1.20	1.17
Public administration	222,400	1,642.3	1.29	1.37	1.37	1.38	1.38	1.40
Professional and business services	914,863	1,300.3	1.06	1.05	1.03	1.04	1.03	1.05
Manufacturing	544,536	1,233.2	1.07	1.01	1.01	1.02	1.03	1.05
Construction	236,636	1,162.6	1.17	1.14	1.09	1.10	1.11	1.08
All industries	6,050,685	1,069.0	1.15	1.13	1.12	1.14	1.12	1.10
Trade, transportation, and utilities	1,179,436	923.5	1.18	1.19	1.13	1.13	1.13	1.10
Education and health services	1,339,766	922.2	1.13	1.09	1.08	1.09	1.11	1.01
Natural resources and mining	36,530	809.1	1.01	0.96	0.91	0.98	0.85	0.79
Unclassified	41,677	799.8			1.20	0.84	0.99	0.92
Other services	201,791	688.1	1.10	1.01	0.94	0.92	0.90	1.03
Leisure and hospitality	747,199	548.5	1.36	1.32	1.31	1.43	1.35	1.31

Source: BLS, QCEW; Calculations by Marin Economic Consulting

Graphical Display of Weekly Wage Evolution by Industry (Super Sector)

Graphs present only Q 3 data for each year.

Figure 1: **1022: Information**

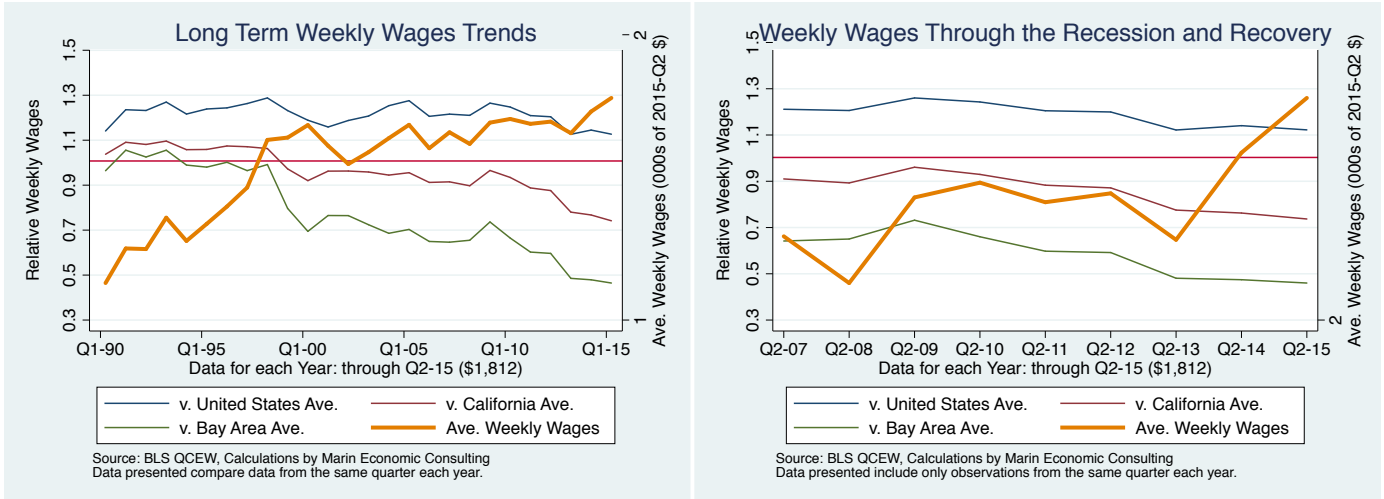


Figure 2: **1023: Financial activities**

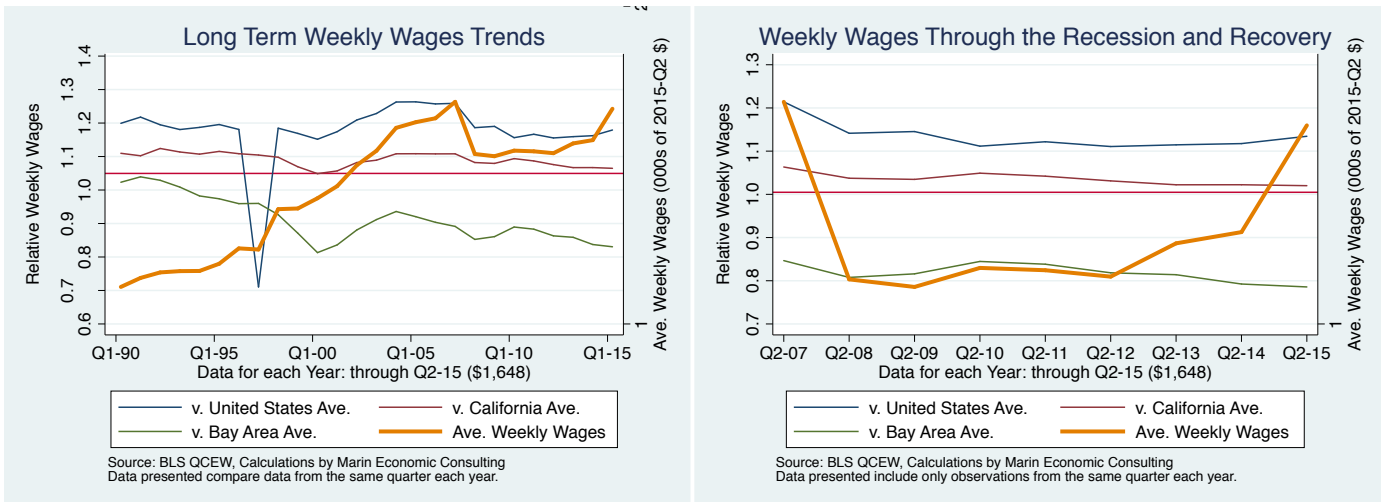


Figure 3: 1028: Public administration

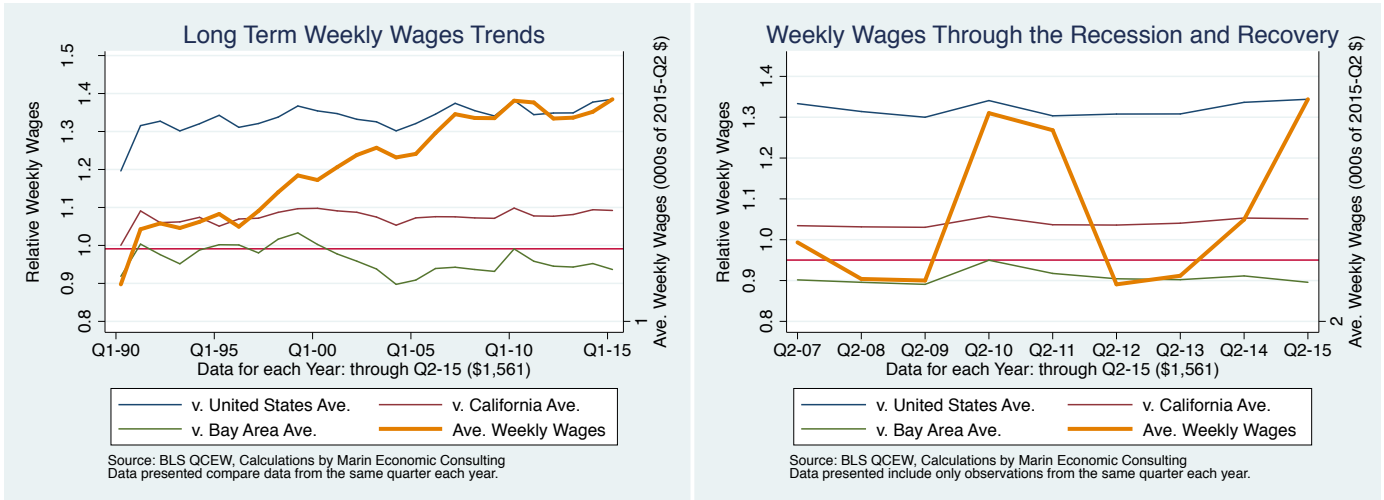


Figure 4: 1024: Professional and business services

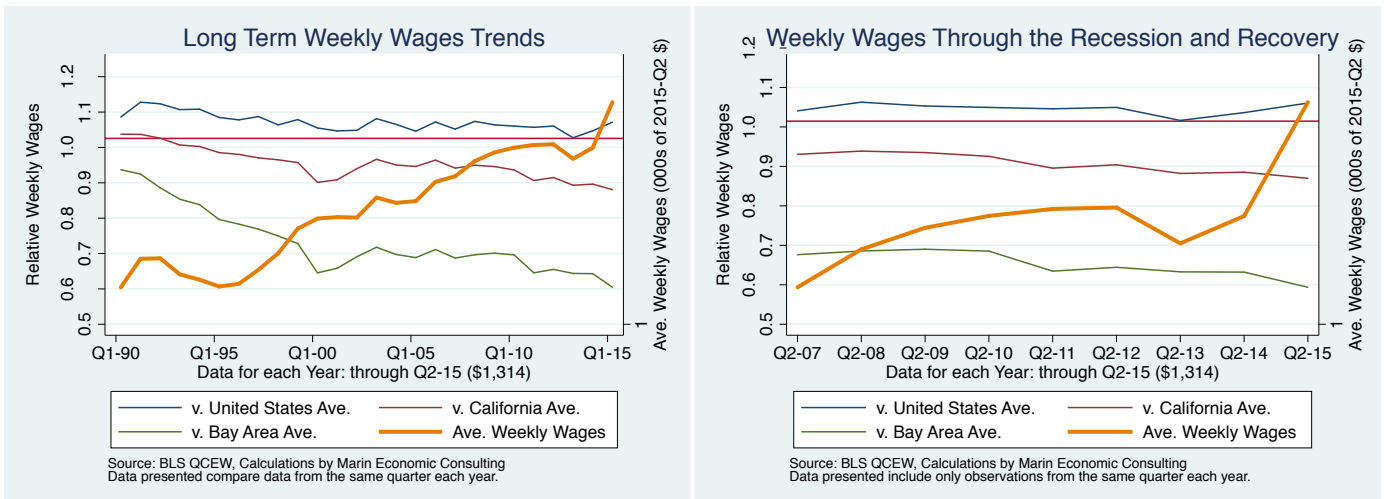


Figure 5: 1013: Manufacturing

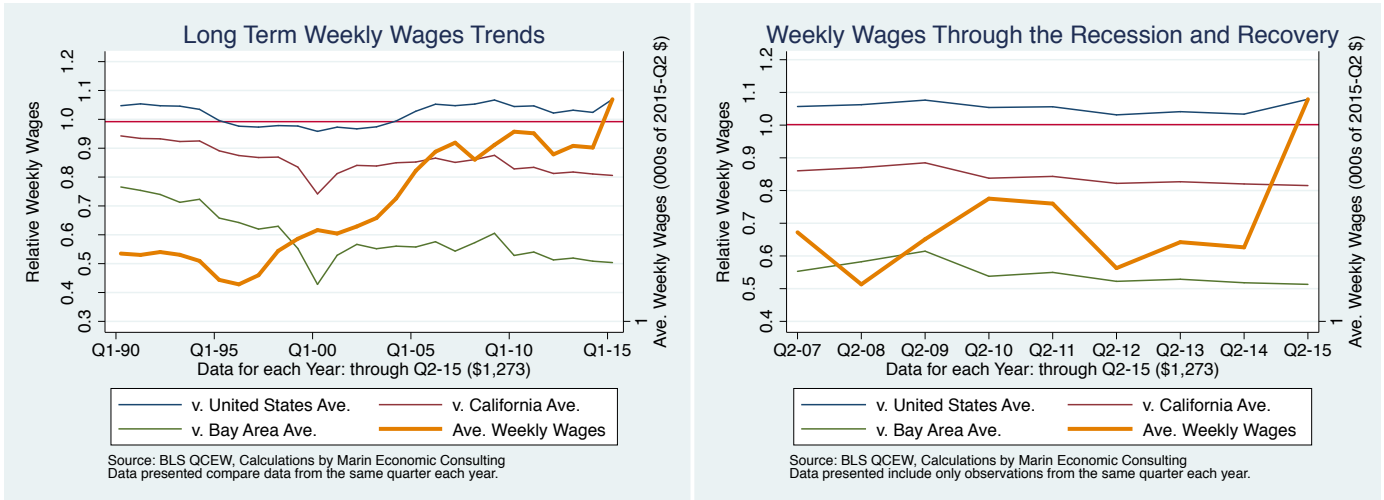


Figure 6: 1012: Construction

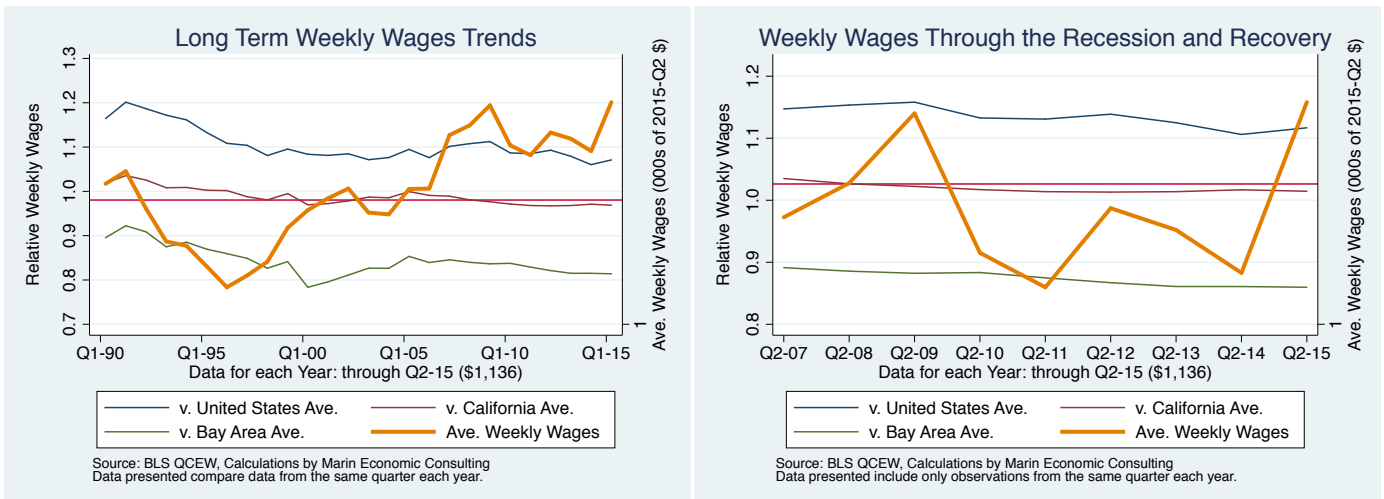


Figure 7: **10: All industries**

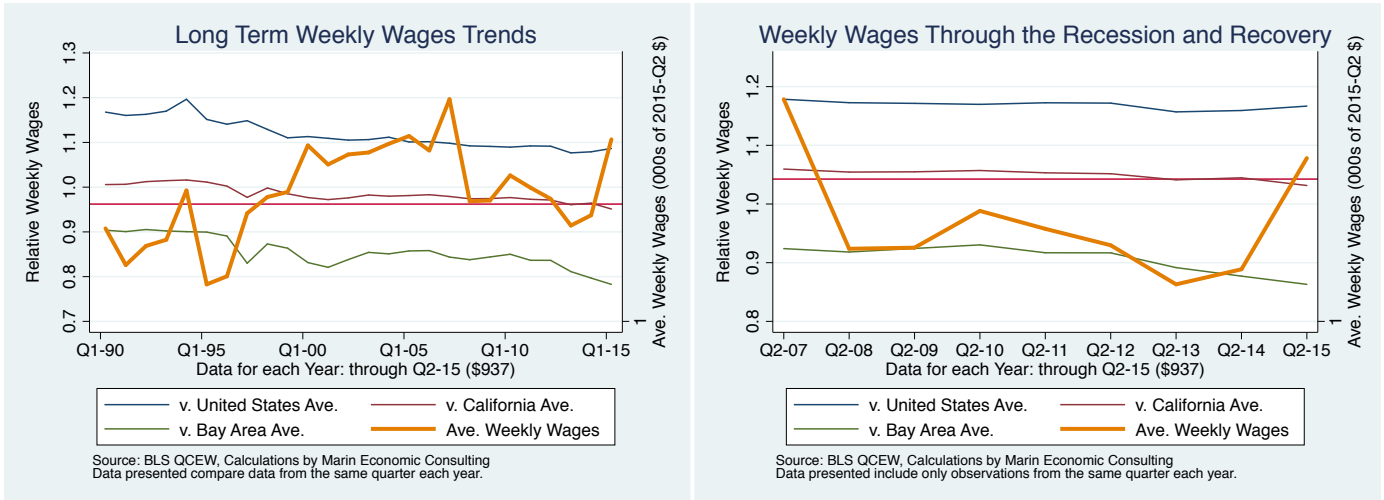


Figure 8: **1021: Trade, transportation, and utilities**

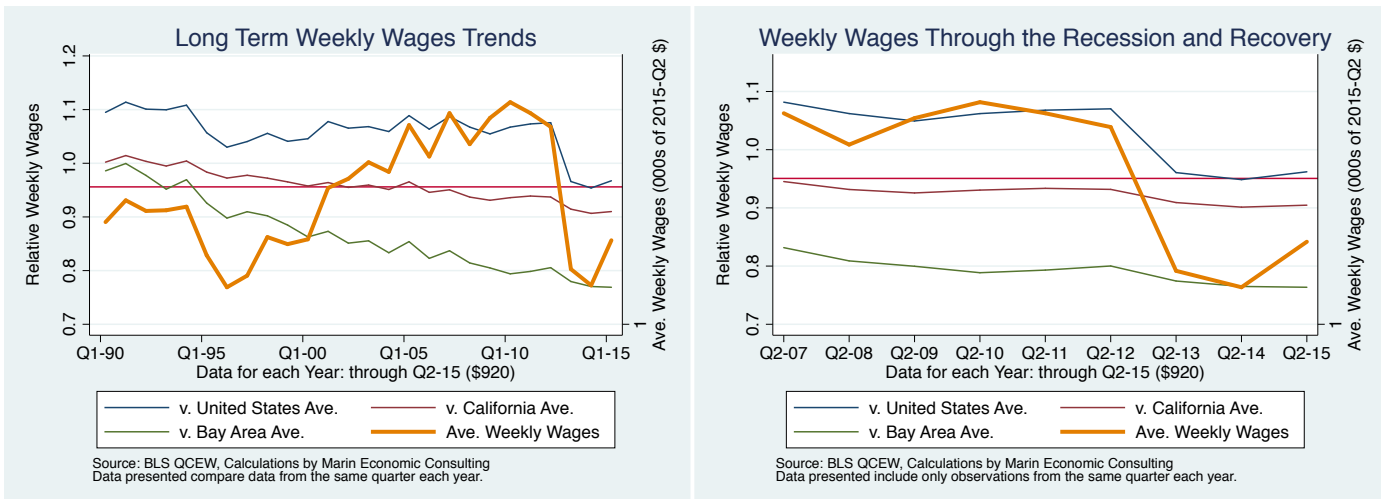


Figure 9: **1025: Education and health services**

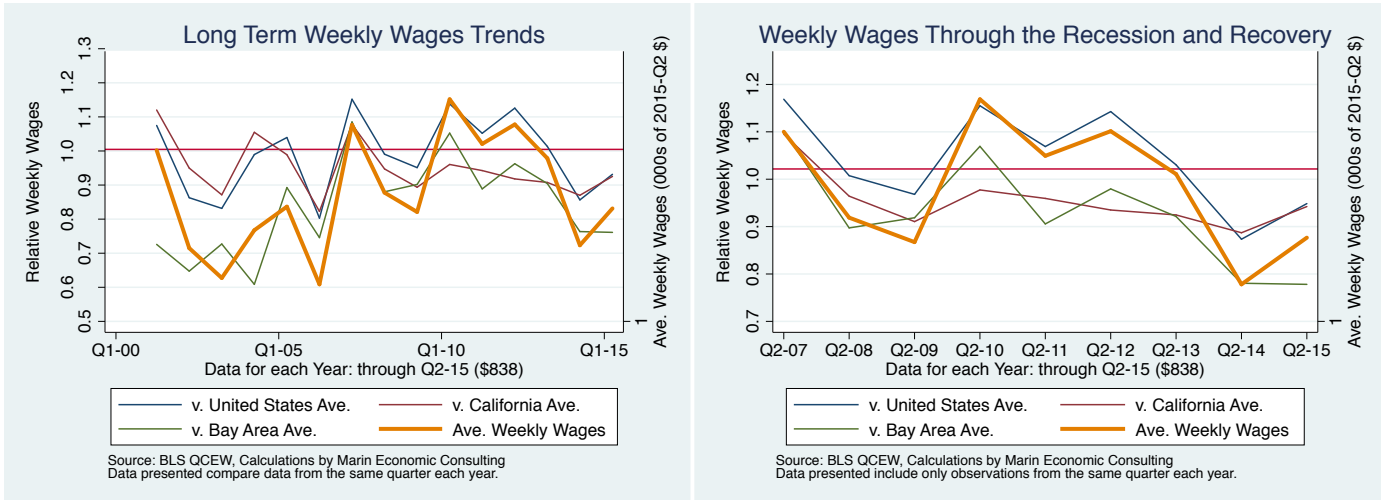


Figure 10: **1011: Natural resources and mining**

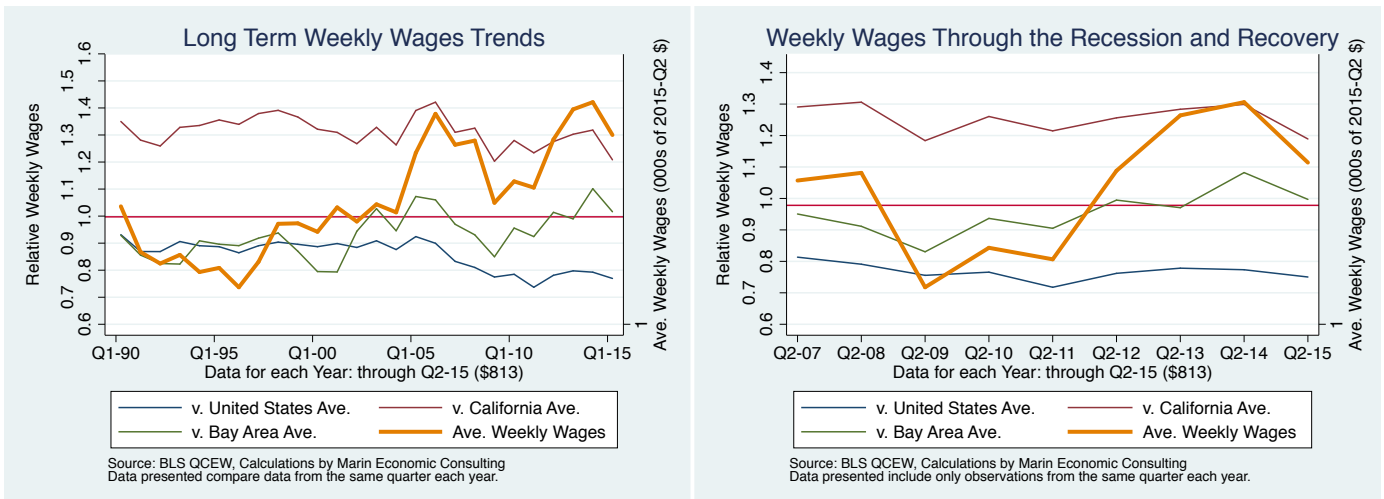


Figure 11: 1029: Unclassified

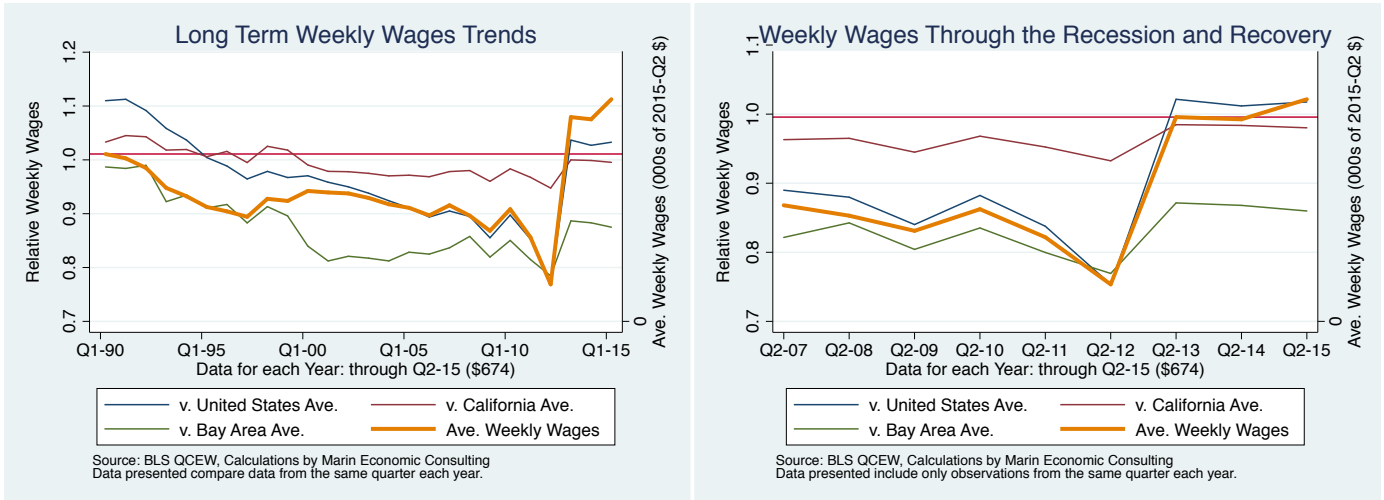


Figure 12: 1027: Other services

