

Butte County Weekly Wages

Focus on Post-Recession Recovery

Q 3 – 2015 Update

Produced by:

Marin Economic Consulting

March 15, 2016

Jon Haveman, Principal

415-336-5705 or Jon@MarinEconomicConsulting.com

Contents

Descriptions and References	2
Overview of Wage Changes Since Onset of Recession	3
Weekly Wages Over Time	4
Graphical Display of Weekly Wage Evolution by Industry (Super Sector)	5

Descriptions and References

The contents of this report illustrate the evolution of Butte County wage patterns over time. This report presents:

Wages: Average weekly wages for the industry in the region. They are inflation adjusted to current dollars using: Consumer Price Index for All Urban Consumers: All Items, from the FRED Database maintained by the St. Louis Federal Reserve Bank.

The data underlying this report are from the Bureau of Labor Statistics: Quarterly Census of Employment and Wages (QCEW). These data are available on a quarterly basis, generally with a 5 month lag from the end of the quarter to the release of the data.

QCEW: The Quarterly Census of Employment and Wages (QCEW) program publishes a quarterly count of employment and wages reported by employers covering 98 percent of U.S. jobs, available at the county, MSA, state and national levels by industry. <http://www.bls.gov/cew/home.htm>

Time Period: The data extend from Q1-1990 through Q 3 - 2015

Seasonality: There is a significant seasonal component to many industries. The QCEW data are not seasonally adjusted. Rather than seasonally adjusting the data, most comparisons in this report are between the same quarter in different years. The data presented are therefore the actual employment levels and wages (inflation adjusted) compared across years.

A particular focus of this report is on the post-Great Recession recovery. This is accomplished by comparing the most recent quarter of data to the same quarter in 2007, the last non-recessionary year for most of California and the United States.

Notes:

Notes: There are occasions where the data displayed seem to reflect implausible increases in either employment or wages. These changes are as reported in the QCEW data. For a closer look at these changes, please contact: Jon@MarinEconomicConsulting.com

Overview of Wage Changes Since the Onset of the Great Recession

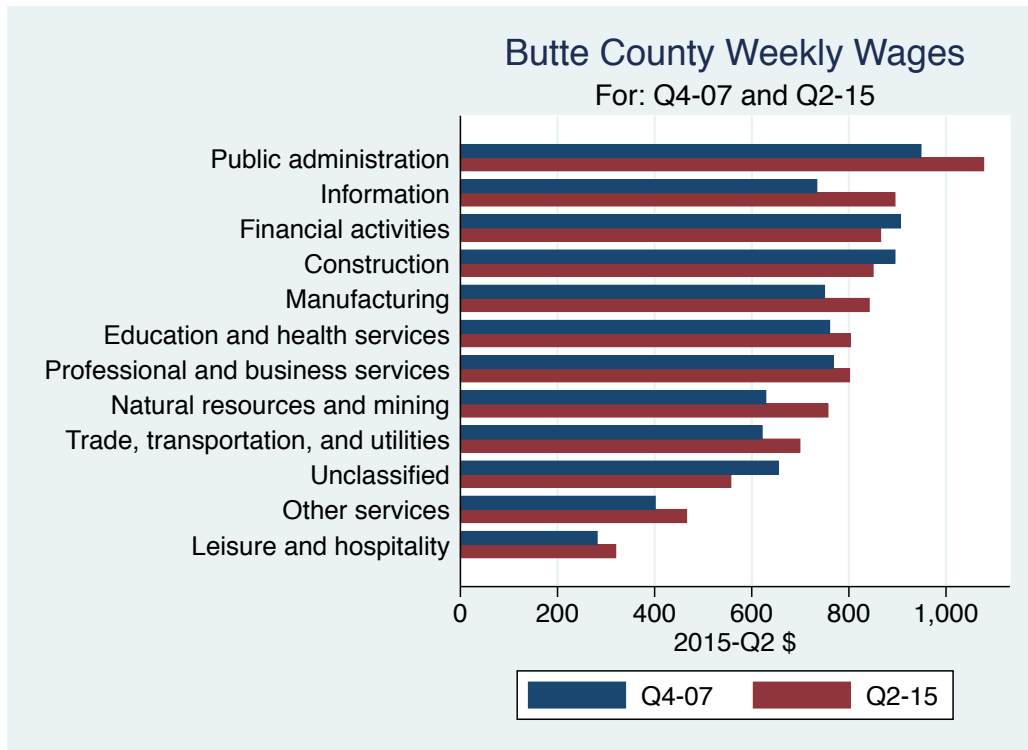


Table: Quarterly Summary for Q 3 – 2015

Sector	Levels in Q 3 – 2015		Change vs Q 3 in 2007					
	Employment	Wages	Relative to:		Employment	Wages	Relative to:	
			Bay	U.S.			Bay	U.S.
Public administration	4,024	1,056.9	0.6	0.9	-133	72.37	-0.08	-0.11
Information	1,035	969.0	0.2	0.6	-170	301.00	-0.07	0.02
Financial activities	3,442	898.8	0.4	0.6	-883	93.54	-0.06	-0.05
Manufacturing	4,184	876.0	0.4	0.7	-668	160.00	-0.01	0.02
Construction	3,334	862.0	0.6	0.8	-702	99.00	-0.06	-0.07
Professional and business services	5,736	787.4	0.4	0.6	95	164.29	-0.03	0.01
Education and health services	25,259	778.0	0.7	0.9	4,439	19.84	-0.08	-0.12
Natural resources and mining	3,370	736.0	0.9	0.7	459	200.00	0.14	0.07
Trade, transportation, and utilities	13,964	733.3	0.6	0.9	-747	127.91	0.01	0.03
All industries	78,085	731.0	0.5	0.8	1,215	90.00	-0.06	-0.03
Unclassified	371	538.0	0.5	0.6				
Other services	3,352	512.1	0.6	0.8	-1,233	107.99	-0.05	0.01
Leisure and hospitality	9,787	329.0	0.6	0.8	333	56.99	-0.01	0.02
Total	155,942							

Source: BLS, QCEW; Calculations by Marin Economic Consulting

Weekly Wages Over Time

Table: Summary of Weekly Wages versus the Bay Area as A Whole

Sector	Q 3 – 2015		Relative Wages: Q 3 of Each Year					
	Employment	Wages	1990	1995	2001	2004	2007	2015
Public administration	4,024	1,056.9	0.74	0.69	0.64	0.67	0.71	0.63
Information	1,035	969.0	0.61	0.52	0.39	0.36	0.30	0.23
Financial activities	3,442	898.8	0.57	0.46	0.42	0.44	0.46	0.41
Manufacturing	4,184	876.0	0.50	0.48	0.45	0.42	0.36	0.35
Construction	3,334	862.0	0.61	0.62	0.57	0.63	0.67	0.61
Professional and business services	5,736	787.4	0.57	0.47	0.41	0.40	0.40	0.37
Education and health services	25,259	778.0	0.83	0.80	0.79	0.74	0.76	0.68
Natural resources and mining	3,370	736.0	0.64	0.79	0.62	0.78	0.77	0.91
Trade, transportation, and utilities	13,964	733.3	0.67	0.64	0.62	0.65	0.64	0.64
All industries	78,085	731.0	0.62	0.58	0.52	0.53	0.52	0.46
Unclassified	371	538.0			0.33	0.47		0.48
Other services	3,352	512.1	0.70	0.68	0.64	0.68	0.70	0.65
Leisure and hospitality	9,787	329.0	0.58	0.54	0.60	0.59	0.60	0.59

Source: BLS, QCEW; Calculations by Marin Economic Consulting

Table: Summary of Weekly Wages versus California as A Whole

Sector	Q 3 – 2015		Relative Wages: Q 3 of Each Year					
	Employment	Wages	1990	1995	2001	2004	2007	2015
Public administration	4,024	1,056.9	0.78	0.73	0.71	0.72	0.79	0.70
Information	1,035	969.0	0.61	0.57	0.49	0.47	0.42	0.37
Financial activities	3,442	898.8	0.62	0.53	0.51	0.53	0.59	0.54
Manufacturing	4,184	876.0	0.62	0.67	0.66	0.63	0.58	0.57
Construction	3,334	862.0	0.69	0.72	0.72	0.74	0.78	0.73
Professional and business services	5,736	787.4	0.63	0.59	0.57	0.54	0.56	0.53
Education and health services	25,259	778.0	0.85	0.86	0.89	0.85	0.87	0.80
Natural resources and mining	3,370	736.0	0.91	1.12	1.01	0.98	0.98	1.07
Trade, transportation, and utilities	13,964	733.3	0.74	0.72	0.73	0.75	0.75	0.78
All industries	78,085	731.0	0.70	0.69	0.67	0.68	0.69	0.64
Unclassified	371	538.0			0.44	0.47		0.60
Other services	3,352	512.1	0.73	0.75	0.78	0.81	0.82	0.73
Leisure and hospitality	9,787	329.0	0.58	0.56	0.64	0.60	0.63	0.65

Source: BLS, QCEW; Calculations by Marin Economic Consulting

Table: Summary of Weekly Wages versus the United States as A Whole

Sector	Q 3 – 2015		Relative Wages: Q 3 of Each Year					
	Employment	Wages	1990	1995	2001	2004	2007	2015
Public administration	4,024	1,056.9	0.96	0.90	0.90	0.92	1.01	0.90
Information	1,035	969.0	0.71	0.64	0.62	0.60	0.54	0.56
Financial activities	3,442	898.8	0.67	0.58	0.59	0.63	0.67	0.62
Manufacturing	4,184	876.0	0.70	0.76	0.78	0.74	0.72	0.75
Construction	3,334	862.0	0.77	0.81	0.80	0.81	0.87	0.80
Professional and business services	5,736	787.4	0.66	0.65	0.65	0.61	0.62	0.63
Education and health services	25,259	778.0	0.91	0.91	0.97	0.94	0.98	0.85
Natural resources and mining	3,370	736.0	0.63	0.75	0.69	0.69	0.65	0.72
Trade, transportation, and utilities	13,964	733.3	0.85	0.81	0.82	0.84	0.84	0.87
All industries	78,085	731.0	0.77	0.76	0.76	0.77	0.78	0.75
Unclassified	371	538.0			0.39	0.46		0.62
Other services	3,352	512.1	0.78	0.75	0.76	0.77	0.76	0.77
Leisure and hospitality	9,787	329.0	0.70	0.62	0.74	0.75	0.77	0.79

Source: BLS, QCEW; Calculations by Marin Economic Consulting

Graphical Display of Weekly Wage Evolution by Industry (Super Sector)

Graphs present only Q 3 data for each year.

Figure 1: **1028: Public administration**

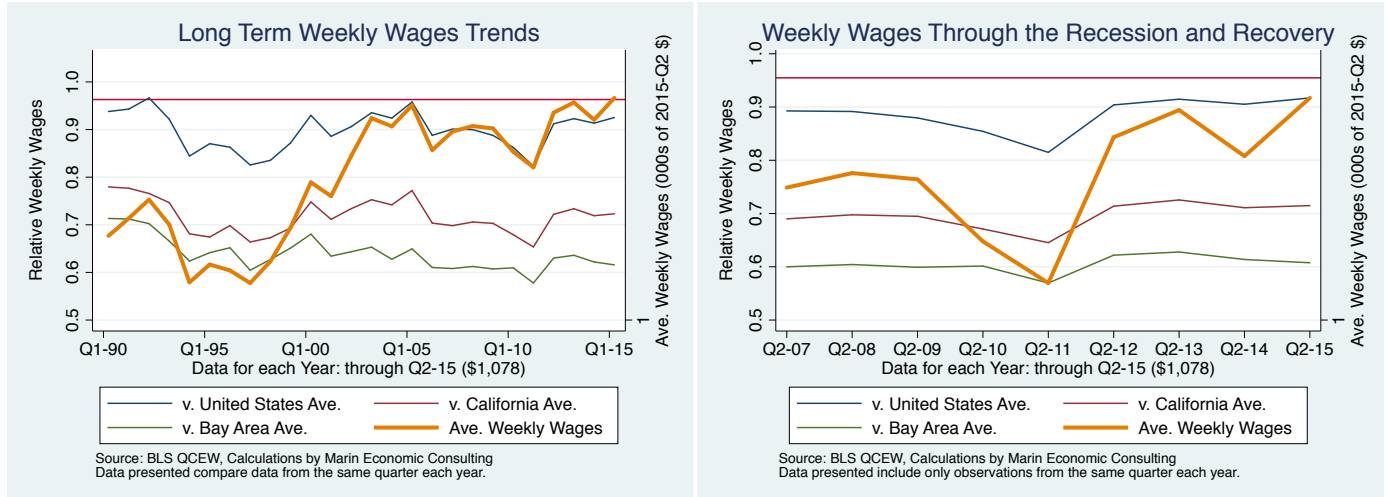


Figure 2: **1022: Information**

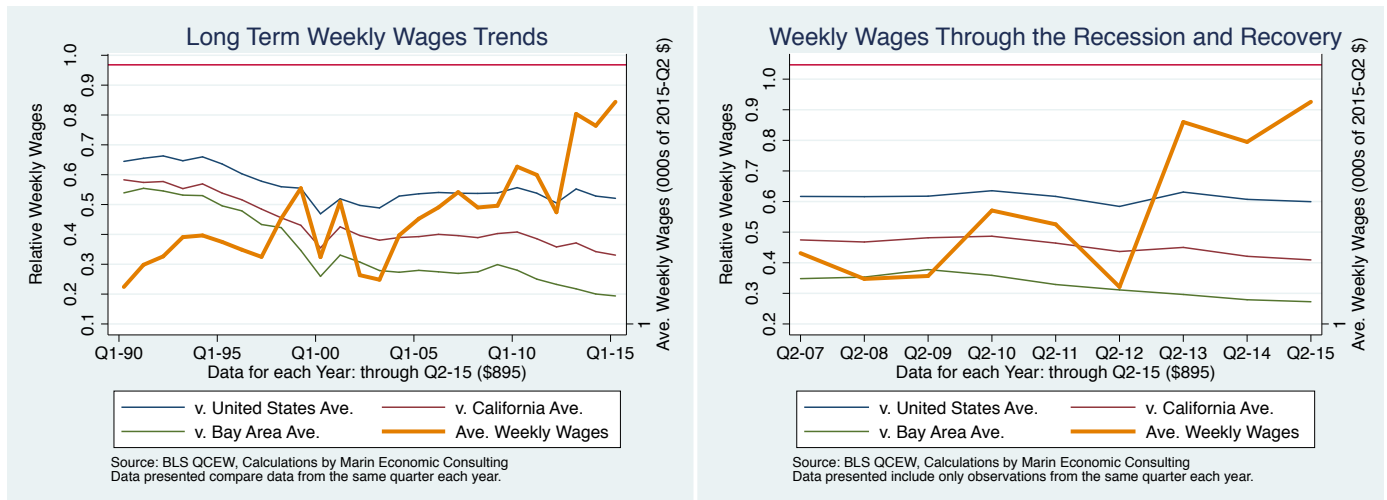


Figure 3: 1023: Financial activities

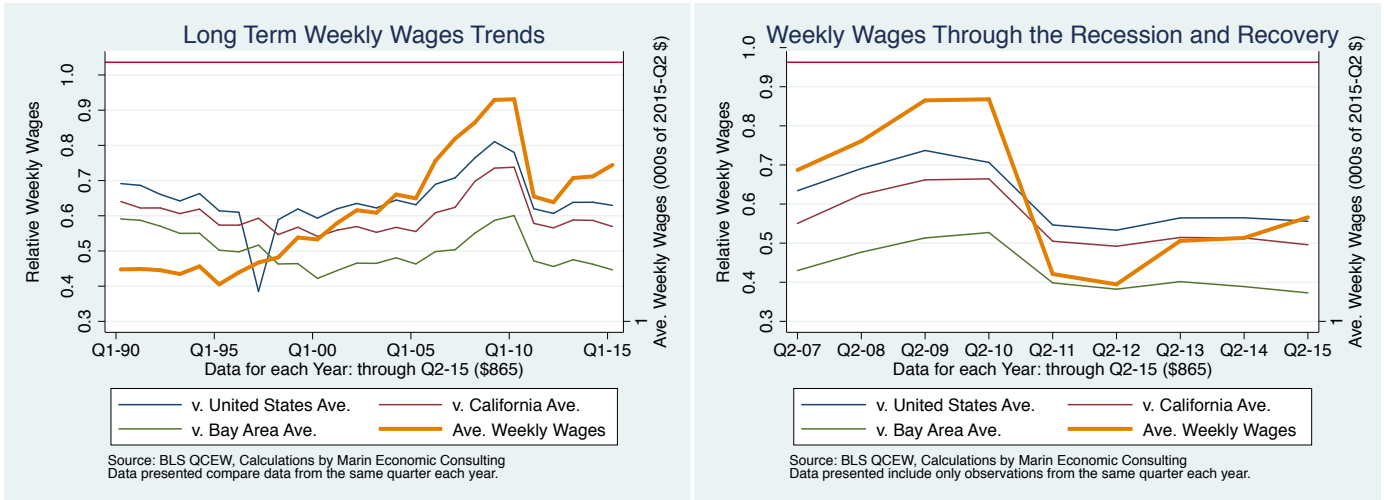


Figure 4: 1013: Manufacturing

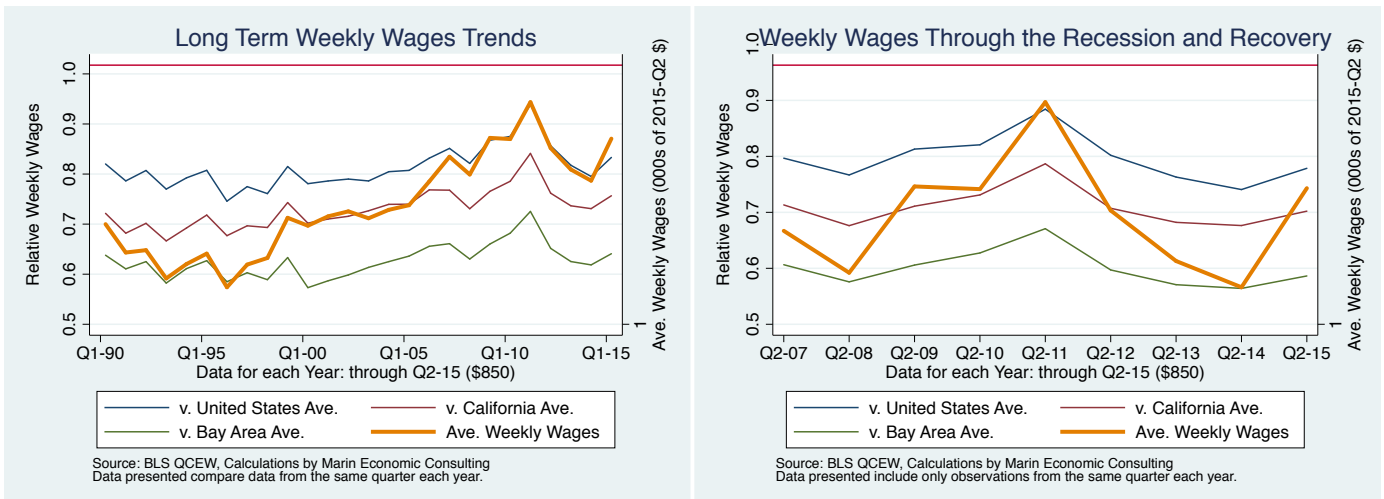


Figure 5: **1012: Construction**

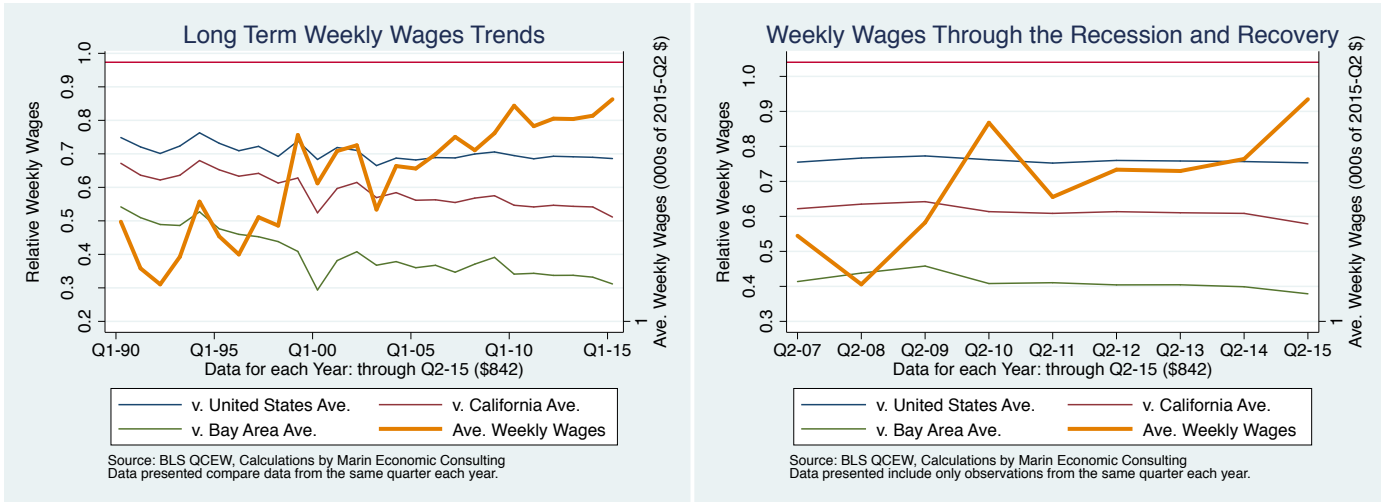


Figure 6: **1024: Professional and business services**

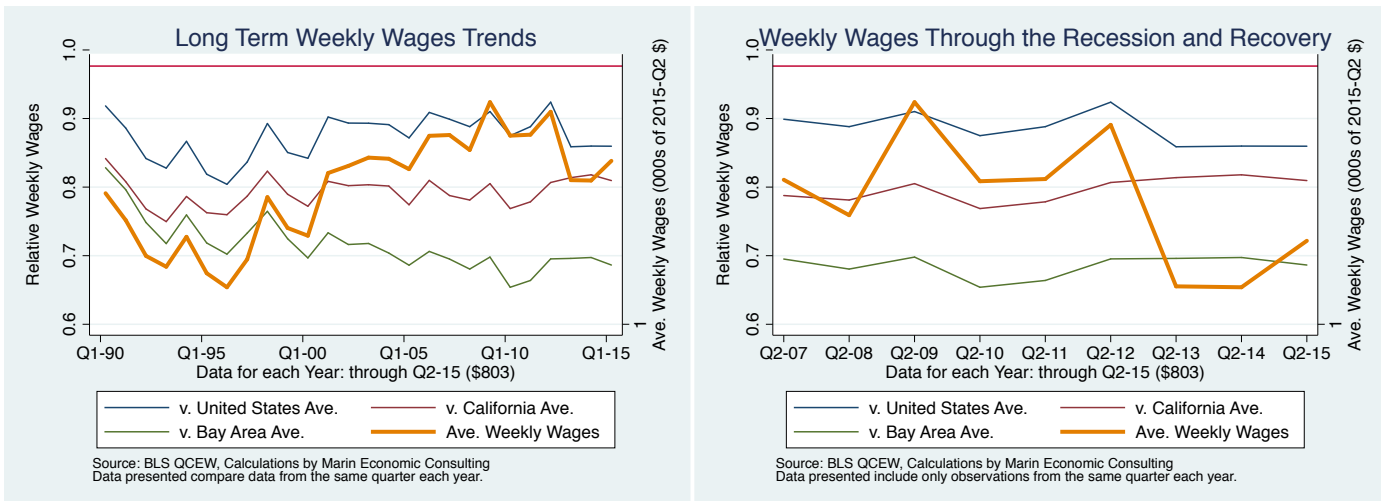


Figure 7: **1025: Education and health services**

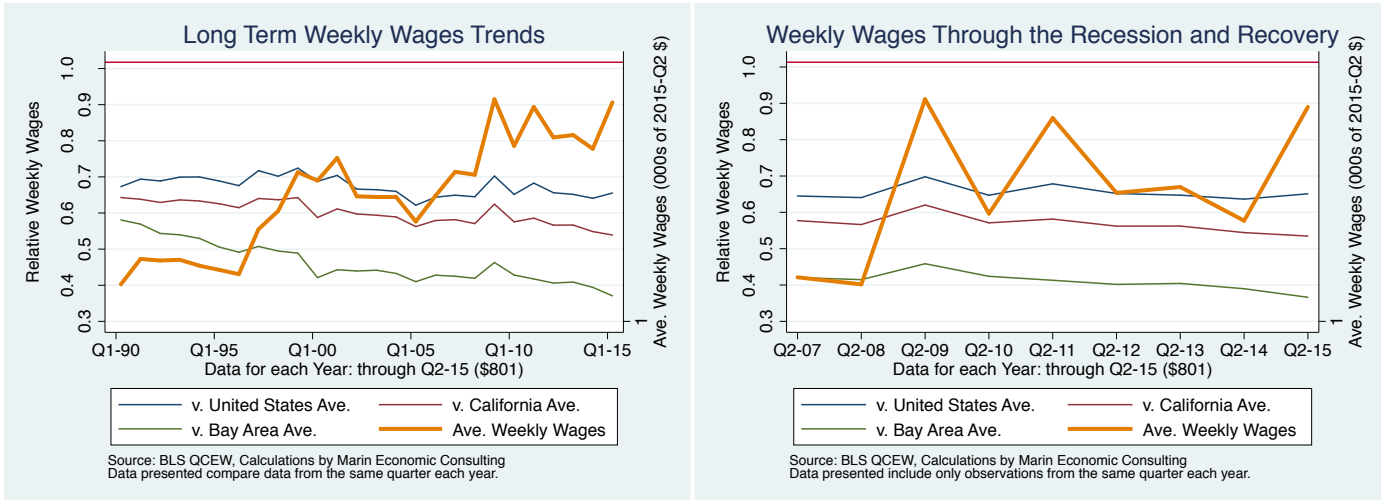


Figure 8: **1011: Natural resources and mining**

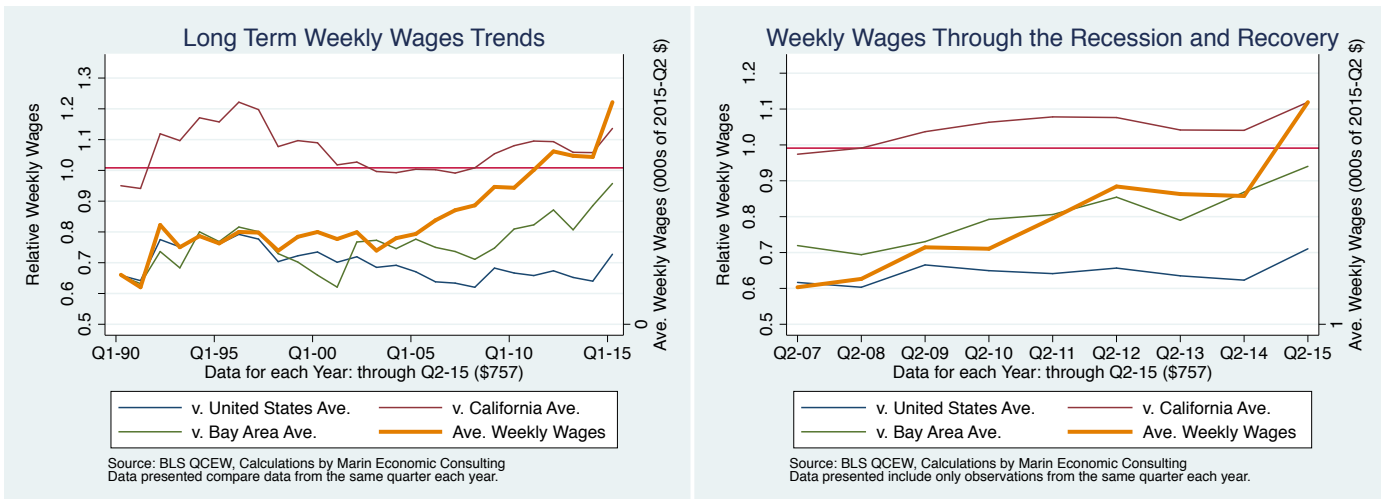


Figure 9: 1021: Trade, transportation, and utilities

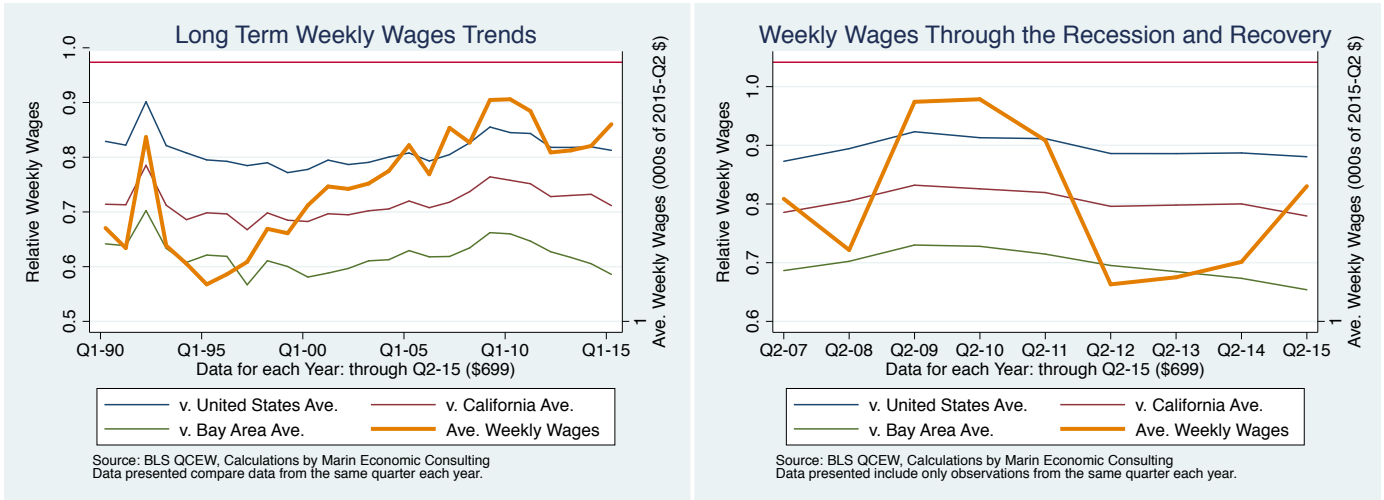


Figure 10: 10: All industries

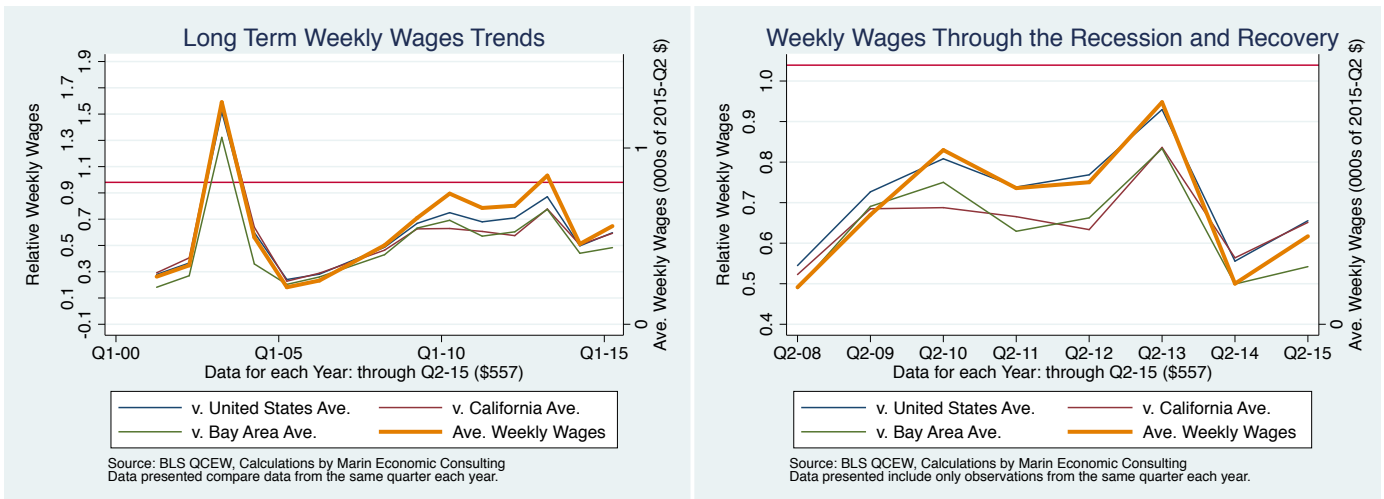


Figure 11: 1029: Unclassified

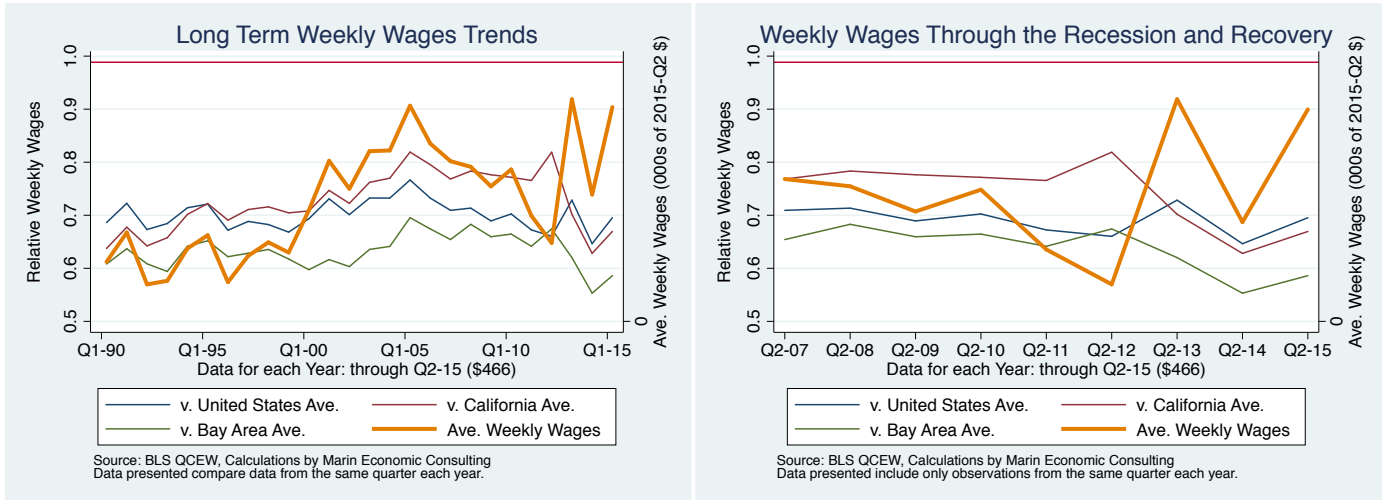


Figure 12: 1027: Other services

