

# Contra Costa County Weekly Wages

Focus on Post-Recession Recovery

Q 3 – 2015 Update

*Produced by:*

**Marin Economic Consulting**

March 15, 2016

Jon Haveman, Principal

415-336-5705 or [Jon@MarinEconomicConsulting.com](mailto:Jon@MarinEconomicConsulting.com)

## **Contents**

Descriptions and References	2
Overview of Wage Changes Since Onset of Recession	3
Weekly Wages Over Time	4
Graphical Display of Weekly Wage Evolution by Industry (Super Sector)	5

## Descriptions and References

The contents of this report illustrate the evolution of Contra Costa County wage patterns over time. This report presents:

**Wages:** Average weekly wages for the industry in the region. They are inflation adjusted to current dollars using: Consumer Price Index for All Urban Consumers: All Items, from the FRED Database maintained by the St. Louis Federal Reserve Bank.

The data underlying this report are from the Bureau of Labor Statistics: Quarterly Census of Employment and Wages (QCEW). These data are available on a quarterly basis, generally with a 5 month lag from the end of the quarter to the release of the data.

**QCEW:** The Quarterly Census of Employment and Wages (QCEW) program publishes a quarterly count of employment and wages reported by employers covering 98 percent of U.S. jobs, available at the county, MSA, state and national levels by industry. <http://www.bls.gov/cew/home.htm>

**Time Period:** The data extend from Q1-1990 through Q 3 - 2015

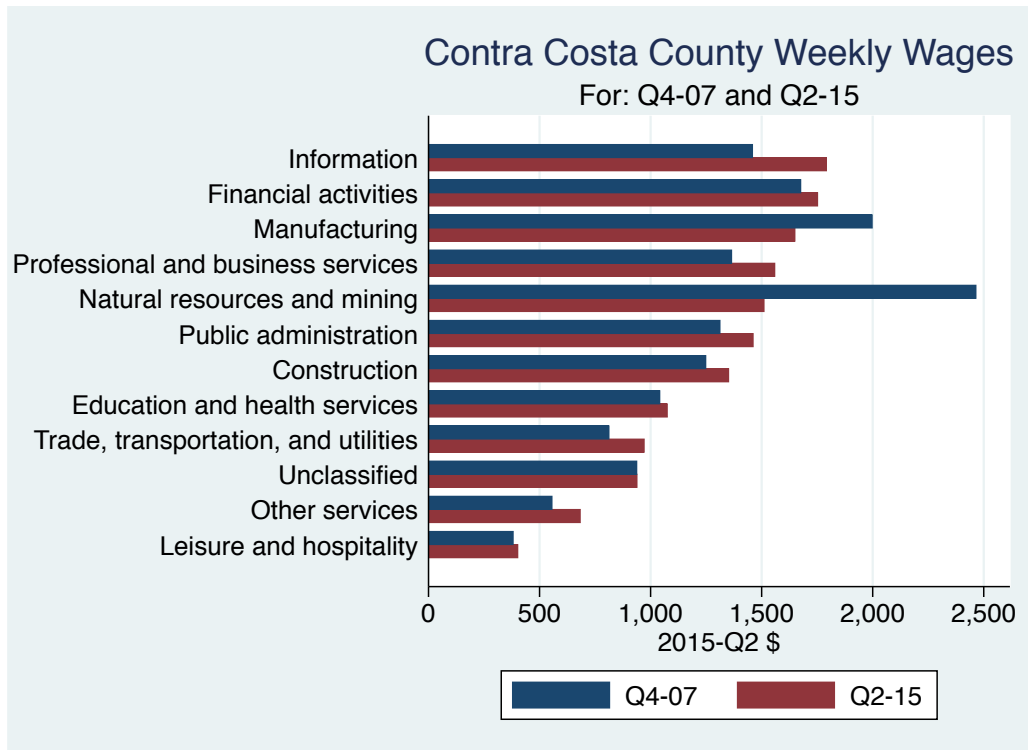
**Seasonality:** There is a significant seasonal component to many industries. The QCEW data are not seasonally adjusted. Rather than seasonally adjusting the data, most comparisons in this report are between the same quarter in different years. The data presented are therefore the actual employment levels and wages (inflation adjusted) compared across years.

A particular focus of this report is on the post-Great Recession recovery. This is accomplished by comparing the most recent quarter of data to the same quarter in 2007, the last non-recessionary year for most of California and the United States.

Notes:

**Notes:** There are occasions where the data displayed seem to reflect implausible increases in either employment or wages. These changes are as reported in the QCEW data. For a closer look at these changes, please contact: [Jon@MarinEconomicConsulting.com](mailto:Jon@MarinEconomicConsulting.com)

# Overview of Wage Changes Since the Onset of the Great Recession



**Table: Quarterly Summary for Q 3 – 2015**

Sector	Levels in Q 3 – 2015				Change vs Q 3 in 2007			
	Employment	Wages	Relative to:		Employment	Wages	Relative to:	
			Bay	U.S.			Bay	U.S.
Information	8,272	1,822.0	0.4	1.1	-4,580	456.00	-0.17	-0.05
Manufacturing	15,221	1,698.0	0.7	1.4	-5,508	21.00	-0.16	-0.25
Financial activities	26,278	1,671.2	0.8	1.2	-2,881	317.04	-0.02	0.03
Professional and business services	51,264	1,523.5	0.7	1.2	1,673	375.51	-0.02	0.08
Public administration	13,300	1,467.8	0.9	1.2	-1,917	233.97	-0.01	-0.02
Natural resources and mining	1,616	1,442.0	1.8	1.4	-226	-533.00	-1.04	-1.00
Construction	22,962	1,391.2	1.0	1.3	-6,080	246.49	-0.02	-0.02
All industries	345,874	1,168.0	0.7	1.2	3,658	166.00	-0.08	-0.03
Education and health services	86,636	1,099.8	1.0	1.2	20,063	89.75	-0.05	-0.10
Trade, transportation, and utilities	64,959	994.4	0.9	1.2	-832	233.80	0.07	0.13
Unclassified	1,780	932.6	0.8	1.1	1,773	-289.39	-0.68	-0.49
Other services	12,440	678.7	0.9	1.0	-3,500	150.62	-0.06	0.03
Leisure and hospitality	39,457	402.8	0.7	1.0	4,506	42.75	-0.07	-0.06
<b>Total</b>	690,058							

Source: BLS, QCEW; Calculations by Marin Economic Consulting

## Weekly Wages Over Time

**Table: Summary of Weekly Wages versus the Bay Area as A Whole**

Sector	Q 3 – 2015		Relative Wages: Q 3 of Each Year					
	Employment	Wages	1990	1995	2001	2004	2007	2015
Information	8,272	1,822.0	1.10	1.08	0.82	0.75	0.61	0.43
Manufacturing	15,221	1,698.0	0.96	0.96	0.82	0.83	0.84	0.68
Financial activities	26,278	1,671.2	0.93	0.87	0.80	0.85	0.78	0.75
Professional and business services	51,264	1,523.5	0.89	0.83	0.75	0.79	0.74	0.72
Public administration	13,300	1,467.8	0.93	0.96	0.90	0.92	0.89	0.88
Natural resources and mining	1,616	1,442.0	2.27	2.15	2.57	2.39	2.82	1.78
Construction	22,962	1,391.2	0.99	0.96	0.89	1.01	1.00	0.98
All industries	345,874	1,168.0	0.93	0.89	0.84	0.87	0.81	0.73
Education and health services	86,636	1,099.8	0.98	0.95	0.99	0.98	1.01	0.95
Trade, transportation, and utilities	64,959	994.4	0.86	0.88	0.86	0.89	0.80	0.87
Unclassified	1,780	932.6			0.62	0.90	1.51	0.83
Other services	12,440	678.7	0.89	0.91	0.90	1.17	0.92	0.86
Leisure and hospitality	39,457	402.8	0.78	0.75	0.80	0.81	0.80	0.73

Source: BLS, QCEW; Calculations by Marin Economic Consulting

**Table: Summary of Weekly Wages versus California as A Whole**

Sector	Q 3 – 2015		Relative Wages: Q 3 of Each Year					
	Employment	Wages	1990	1995	2001	2004	2007	2015
Information	8,272	1,822.0	1.11	1.20	1.02	0.98	0.86	0.70
Manufacturing	15,221	1,698.0	1.20	1.33	1.20	1.25	1.37	1.11
Financial activities	26,278	1,671.2	1.01	1.01	0.99	1.03	0.99	1.01
Professional and business services	51,264	1,523.5	0.98	1.03	1.04	1.08	1.02	1.03
Public administration	13,300	1,467.8	0.98	1.01	1.00	1.00	0.99	0.98
Natural resources and mining	1,616	1,442.0	3.24	3.04	4.18	3.02	3.62	2.10
Construction	22,962	1,391.2	1.13	1.11	1.12	1.20	1.18	1.18
All industries	345,874	1,168.0	1.05	1.07	1.10	1.11	1.08	1.03
Education and health services	86,636	1,099.8	1.00	1.02	1.12	1.13	1.15	1.13
Trade, transportation, and utilities	64,959	994.4	0.95	0.98	1.01	1.03	0.94	1.06
Unclassified	1,780	932.6			0.83	0.91	1.39	1.03
Other services	12,440	678.7	0.93	1.00	1.09	1.40	1.07	0.97
Leisure and hospitality	39,457	402.8	0.79	0.77	0.85	0.83	0.84	0.80

Source: BLS, QCEW; Calculations by Marin Economic Consulting

**Table: Summary of Weekly Wages versus the United States as A Whole**

Sector	Q 3 – 2015		Relative Wages: Q 3 of Each Year					
	Employment	Wages	1990	1995	2001	2004	2007	2015
Information	8,272	1,822.0	1.29	1.34	1.29	1.27	1.10	1.06
Manufacturing	15,221	1,698.0	1.35	1.51	1.42	1.47	1.70	1.45
Financial activities	26,278	1,671.2	1.09	1.09	1.13	1.20	1.13	1.16
Professional and business services	51,264	1,523.5	1.03	1.14	1.18	1.21	1.15	1.23
Public administration	13,300	1,467.8	1.21	1.26	1.26	1.27	1.27	1.25
Natural resources and mining	1,616	1,442.0	2.24	2.04	2.86	2.12	2.41	1.41
Construction	22,962	1,391.2	1.27	1.25	1.25	1.31	1.31	1.29
All industries	345,874	1,168.0	1.16	1.18	1.25	1.26	1.22	1.20
Education and health services	86,636	1,099.8	1.07	1.08	1.22	1.25	1.30	1.21
Trade, transportation, and utilities	64,959	994.4	1.09	1.11	1.13	1.15	1.06	1.18
Unclassified	1,780	932.6			0.73	0.88	1.55	1.07
Other services	12,440	678.7	1.00	1.00	1.07	1.33	0.99	1.02
Leisure and hospitality	39,457	402.8	0.94	0.86	0.99	1.03	1.02	0.96

Source: BLS, QCEW; Calculations by Marin Economic Consulting

# Graphical Display of Weekly Wage Evolution by Industry (Super Sector)

Graphs present only Q 3 data for each year.

Figure 1: **1022: Information**

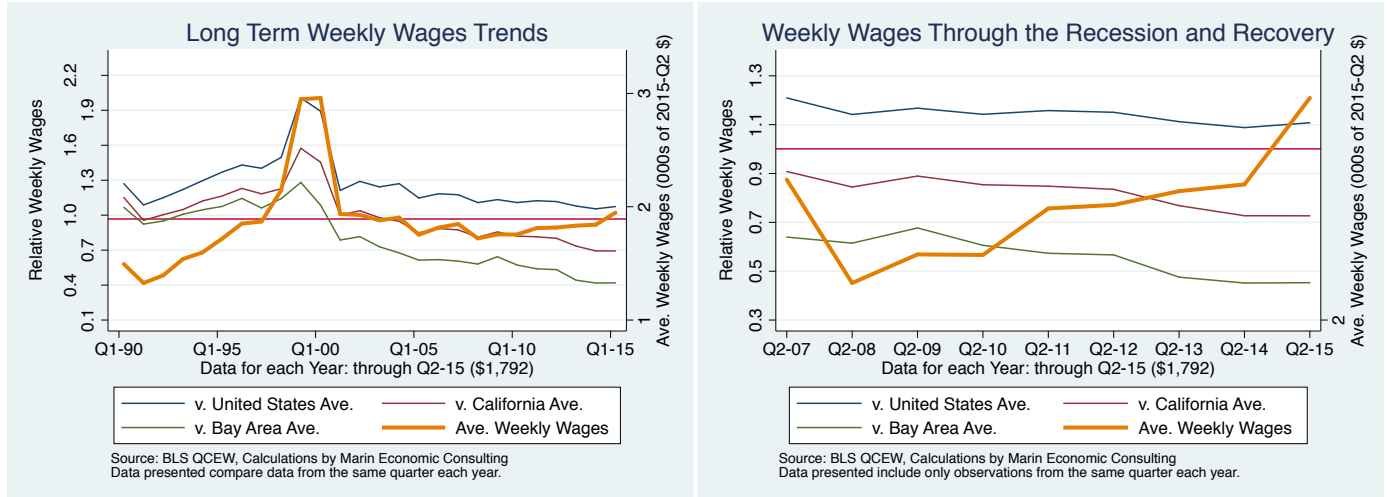


Figure 2: **1013: Manufacturing**

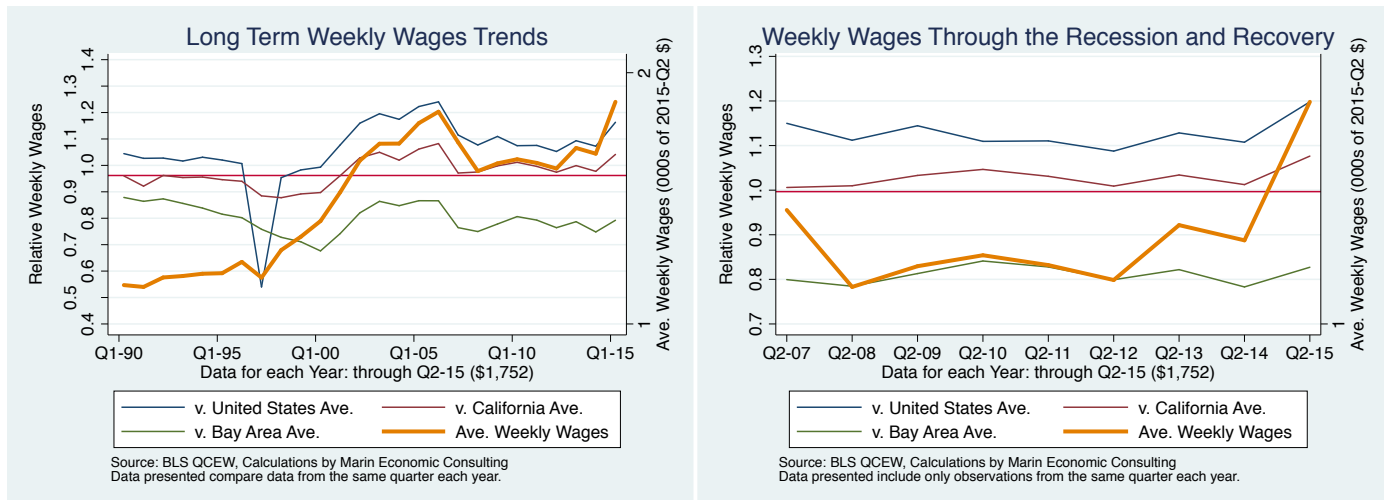


Figure 3: 1023: Financial activities

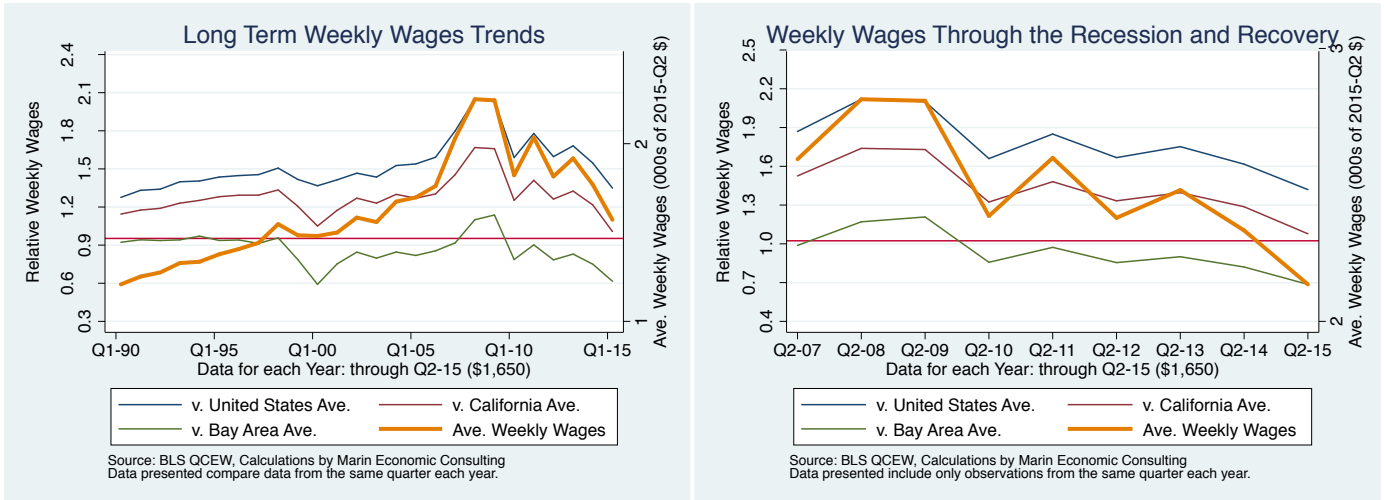


Figure 4: 1024: Professional and business services

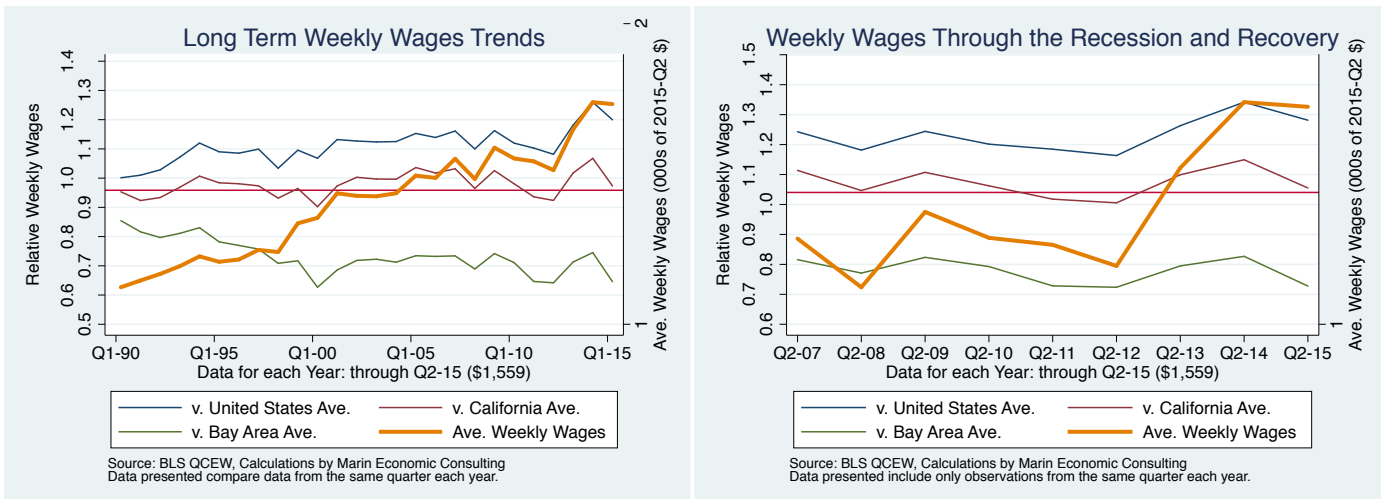


Figure 5: 1028: Public administration

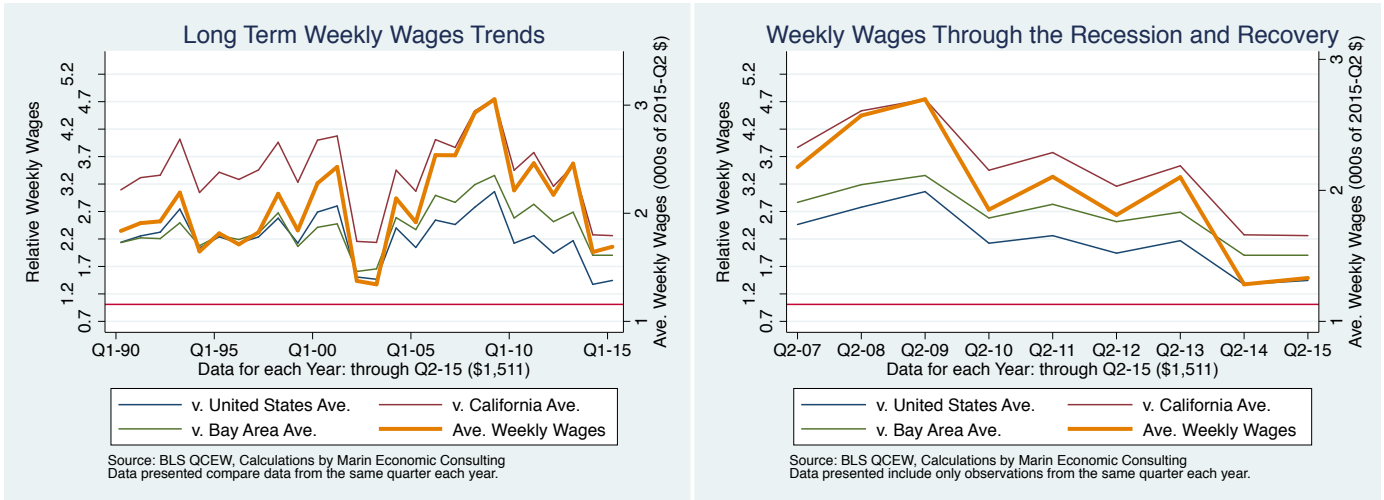


Figure 6: 1011: Natural resources and mining

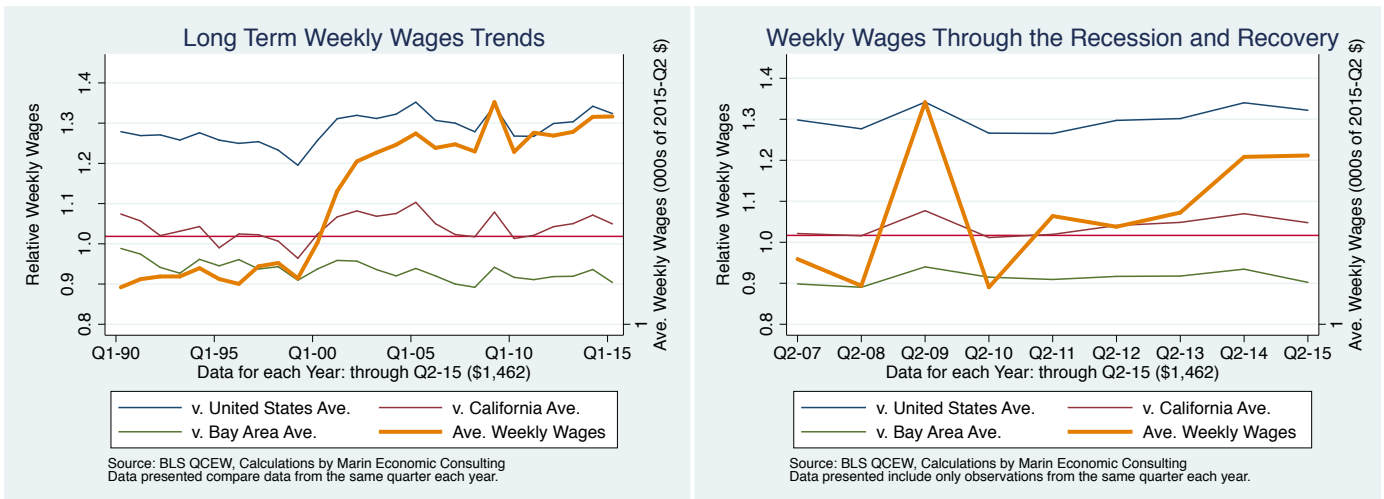


Figure 7: 1012: Construction

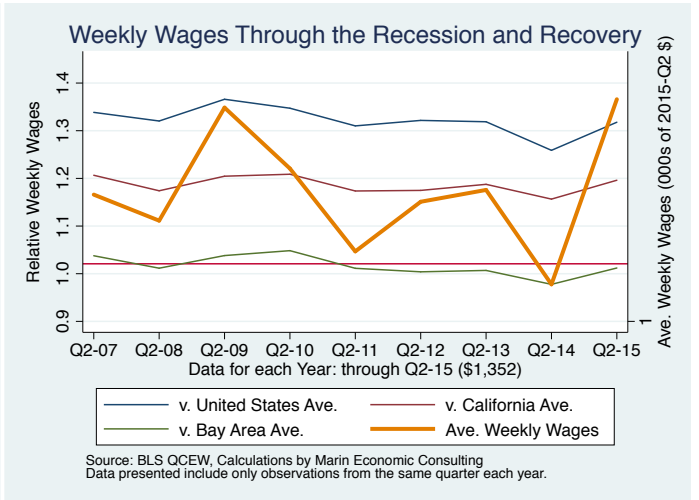
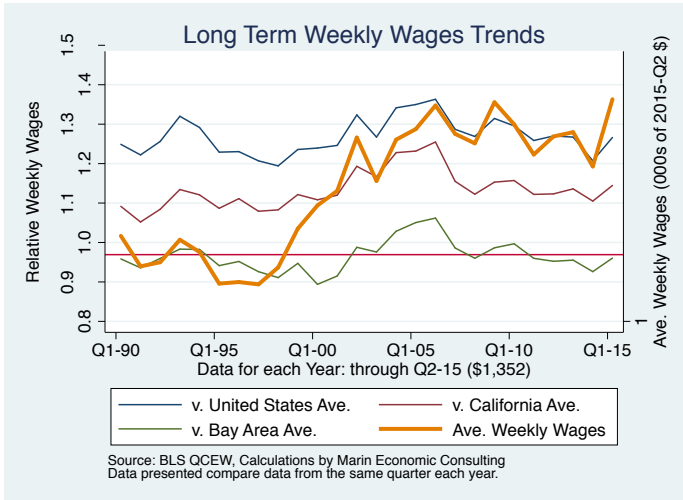


Figure 8: 10: All industries

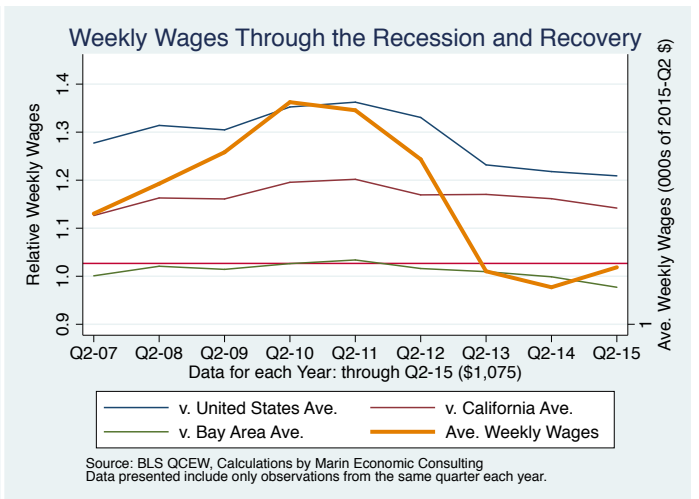
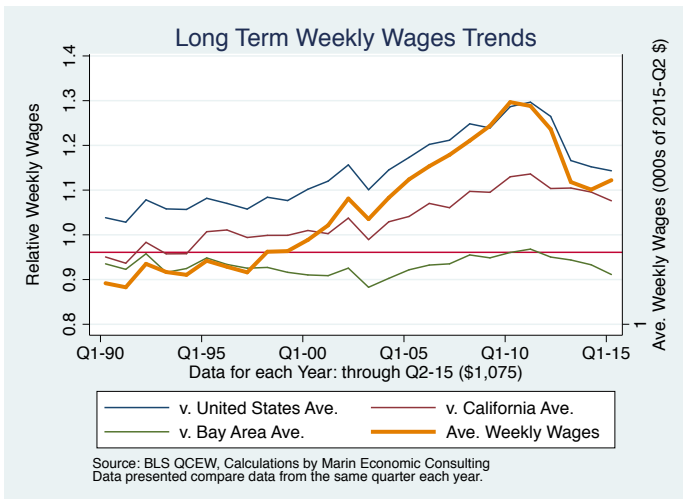




Figure 9: **1025: Education and health services**

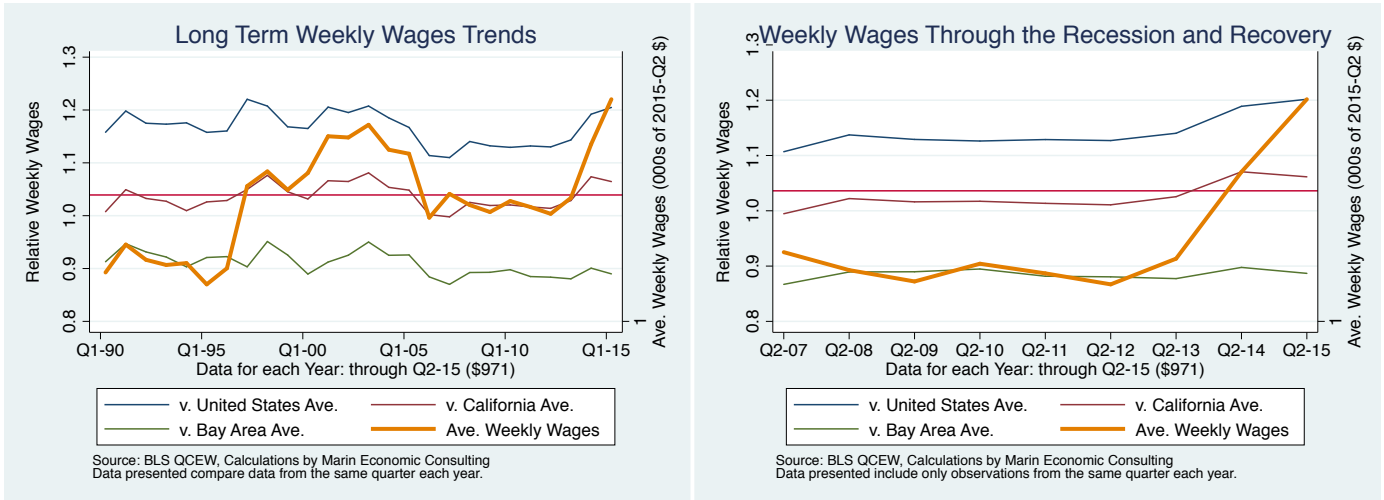


Figure 10: **1021: Trade, transportation, and utilities**

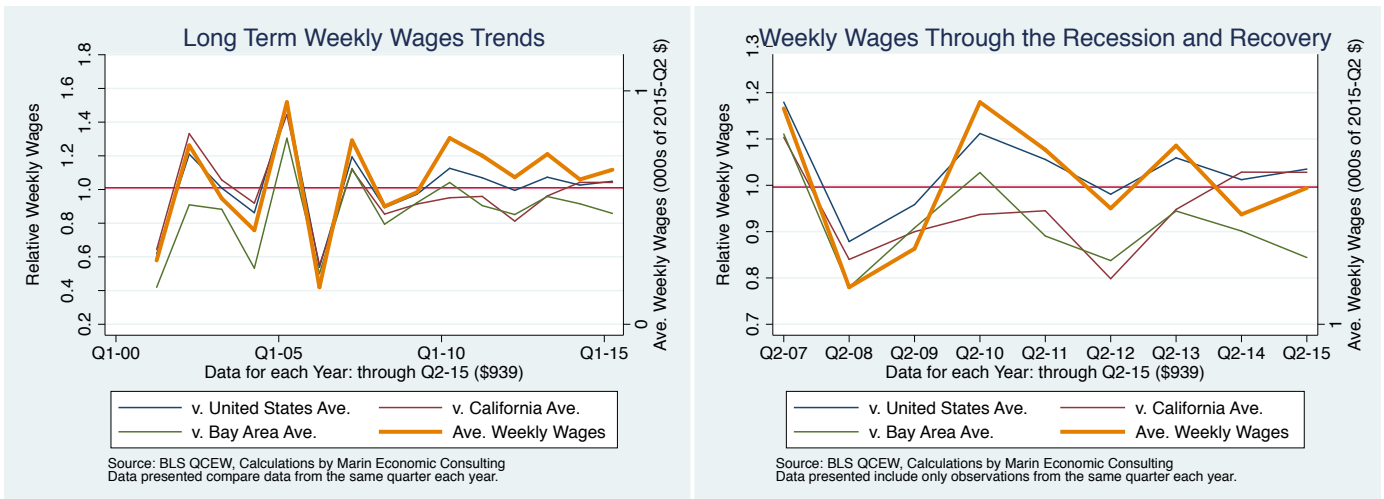


Figure 11: 1029: Unclassified

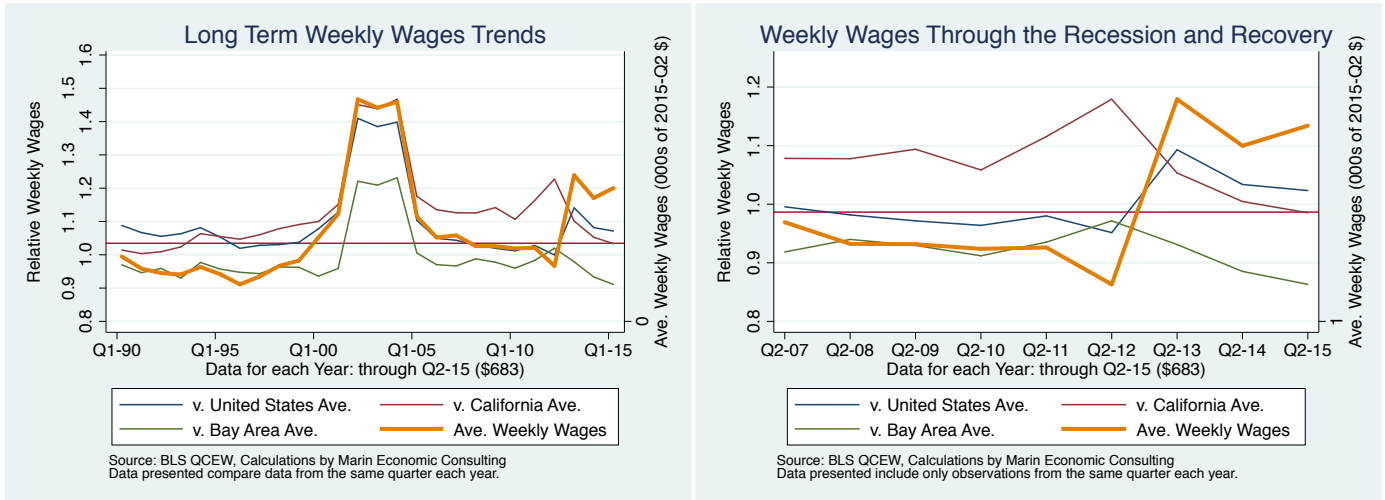


Figure 12: 1027: Other services

