

El Dorado County Weekly Wages

Focus on Post-Recession Recovery

Q 3 – 2015 Update

Produced by:

Marin Economic Consulting

March 15, 2016

Jon Haveman, Principal

415-336-5705 or Jon@MarinEconomicConsulting.com

Contents

Descriptions and References	2
Overview of Wage Changes Since Onset of Recession	3
Weekly Wages Over Time	4
Graphical Display of Weekly Wage Evolution by Industry (Super Sector)	5

Descriptions and References

The contents of this report illustrate the evolution of El Dorado County wage patterns over time. This report presents:

Wages: Average weekly wages for the industry in the region. They are inflation adjusted to current dollars using: Consumer Price Index for All Urban Consumers: All Items, from the FRED Database maintained by the St. Louis Federal Reserve Bank.

The data underlying this report are from the Bureau of Labor Statistics: Quarterly Census of Employment and Wages (QCEW). These data are available on a quarterly basis, generally with a 5 month lag from the end of the quarter to the release of the data.

QCEW: The Quarterly Census of Employment and Wages (QCEW) program publishes a quarterly count of employment and wages reported by employers covering 98 percent of U.S. jobs, available at the county, MSA, state and national levels by industry. <http://www.bls.gov/cew/home.htm>

Time Period: The data extend from Q1-1990 through Q3 - 2015

Seasonality: There is a significant seasonal component to many industries. The QCEW data are not seasonally adjusted. Rather than seasonally adjusting the data, most comparisons in this report are between the same quarter in different years. The data presented are therefore the actual employment levels and wages (inflation adjusted) compared across years.

A particular focus of this report is on the post-Great Recession recovery. This is accomplished by comparing the most recent quarter of data to the same quarter in 2007, the last non-recessionary year for most of California and the United States.

Notes:

Notes: There are occasions where the data displayed seem to reflect implausible increases in either employment or wages. These changes are as reported in the QCEW data. For a closer look at these changes, please contact: Jon@MarinEconomicConsulting.com

Overview of Wage Changes Since the Onset of the Great Recession

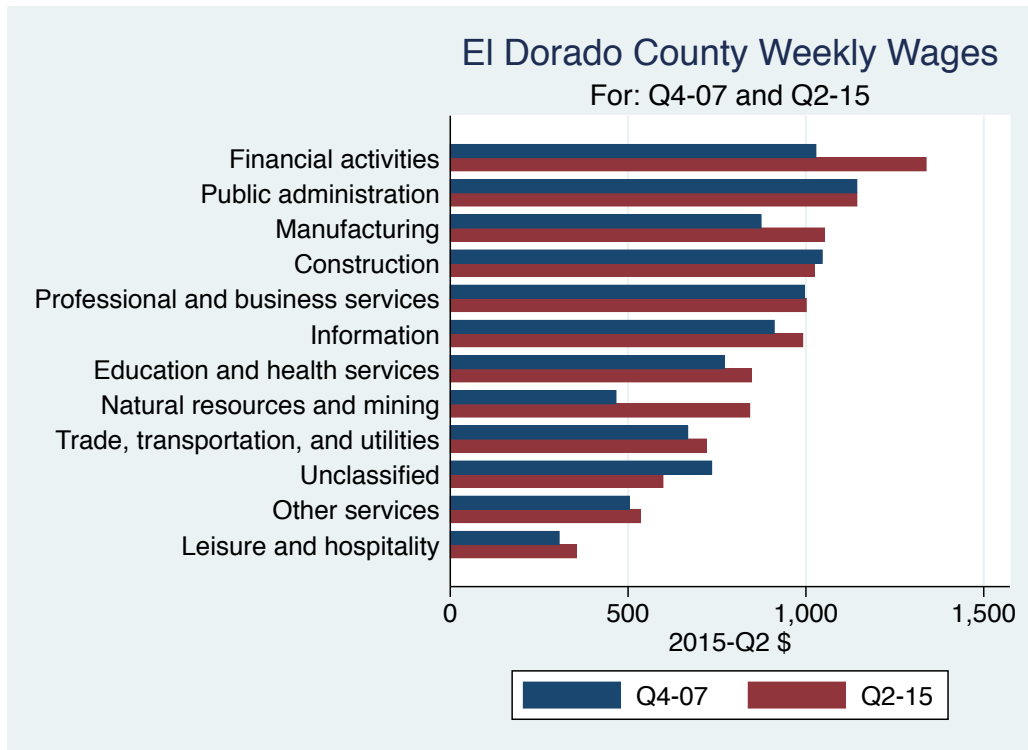


Table: Quarterly Summary for Q 3 – 2015

Sector	Levels in Q 3 – 2015		Change vs Q 3 in 2007					
	Employment	Wages	Relative to:		Employment	Wages	Relative to:	
			Bay	U.S.			Bay	U.S.
Public administration	3,594	1,358.6	0.8	1.2	-289	339.27	0.08	0.11
Financial activities	4,288	1,204.0	0.5	0.8	700	252.00	-0.00	0.04
Professional and business services	5,163	1,054.0	0.5	0.8	-2,468	197.00	-0.05	-0.01
Manufacturing	2,602	1,050.0	0.4	0.9	192	247.00	0.02	0.08
Construction	3,929	1,048.0	0.7	1.0	-1,872	99.00	-0.09	-0.11
Information	537	942.0	0.2	0.5	-270	121.00	-0.14	-0.12
Natural resources and mining	670	863.0	1.1	0.8	50	296.00	0.25	0.15
All industries	52,116	847.0	0.5	0.9	-523	111.00	-0.07	-0.03
Education and health services	10,875	845.8	0.7	0.9	1,458	76.06	-0.04	-0.06
Trade, transportation, and utilities	7,741	736.9	0.6	0.9	-626	95.69	-0.03	-0.01
Unclassified	313	606.0	0.5	0.7				
Other services	1,765	556.7	0.7	0.8	-257	41.29	-0.19	-0.13
Leisure and hospitality	9,042	385.0	0.7	0.9	1,267	70.00	-0.00	0.03
Total	102,635							

Source: BLS, QCEW; Calculations by Marin Economic Consulting

Weekly Wages Over Time

Table: Summary of Weekly Wages versus the Bay Area as A Whole

Sector	Q 3 – 2015		Relative Wages: Q 3 of Each Year					
	Employment	Wages	1990	1995	2001	2004	2007	2015
Public administration	3,594	1,358.6	0.81	0.72	0.78	0.75	0.73	0.81
Financial activities	4,288	1,204.0	0.53	0.50	0.55	0.53	0.55	0.54
Professional and business services	5,163	1,054.0	0.68	0.57	0.72	0.61	0.55	0.50
Manufacturing	2,602	1,050.0	0.68	0.57	0.57	0.48	0.40	0.42
Construction	3,929	1,048.0	0.64	0.74	0.69	0.75	0.83	0.74
Information	537	942.0	0.61	0.45	0.33	0.43	0.37	0.22
Natural resources and mining	670	863.0	1.05	0.99	0.64	0.75	0.81	1.06
All industries	52,116	847.0	0.66	0.60	0.61	0.61	0.60	0.53
Education and health services	10,875	845.8	0.84	0.72	0.74	0.72	0.77	0.73
Trade, transportation, and utilities	7,741	736.9	0.70	0.68	0.69	0.72	0.67	0.65
Unclassified	313	606.0			0.16	0.57		0.54
Other services	1,765	556.7	0.81	0.82	0.76	0.87	0.90	0.71
Leisure and hospitality	9,042	385.0	0.78	0.73	0.68	0.66	0.70	0.69

Source: BLS, QCEW; Calculations by Marin Economic Consulting

Table: Summary of Weekly Wages versus California as A Whole

Sector	Q 3 – 2015		Relative Wages: Q 3 of Each Year					
	Employment	Wages	1990	1995	2001	2004	2007	2015
Public administration	3,594	1,358.6	0.85	0.76	0.87	0.82	0.82	0.90
Financial activities	4,288	1,204.0	0.57	0.58	0.68	0.64	0.70	0.73
Professional and business services	5,163	1,054.0	0.75	0.71	0.99	0.84	0.76	0.71
Manufacturing	2,602	1,050.0	0.85	0.79	0.83	0.72	0.65	0.69
Construction	3,929	1,048.0	0.73	0.86	0.87	0.89	0.98	0.89
Information	537	942.0	0.62	0.50	0.41	0.56	0.52	0.36
Natural resources and mining	670	863.0	1.50	1.41	1.03	0.95	1.04	1.25
All industries	52,116	847.0	0.75	0.72	0.80	0.77	0.79	0.75
Education and health services	10,875	845.8	0.85	0.77	0.83	0.83	0.88	0.87
Trade, transportation, and utilities	7,741	736.9	0.77	0.76	0.82	0.84	0.80	0.79
Unclassified	313	606.0			0.21	0.57		0.67
Other services	1,765	556.7	0.85	0.90	0.93	1.05	1.04	0.80
Leisure and hospitality	9,042	385.0	0.79	0.75	0.72	0.68	0.73	0.77

Source: BLS, QCEW; Calculations by Marin Economic Consulting

Table: Summary of Weekly Wages versus the United States as A Whole

Sector	Q 3 – 2015		Relative Wages: Q 3 of Each Year					
	Employment	Wages	1990	1995	2001	2004	2007	2015
Public administration	3,594	1,358.6	1.05	0.94	1.09	1.04	1.05	1.16
Financial activities	4,288	1,204.0	0.61	0.63	0.77	0.75	0.80	0.83
Professional and business services	5,163	1,054.0	0.79	0.79	1.13	0.94	0.86	0.85
Manufacturing	2,602	1,050.0	0.96	0.90	0.98	0.85	0.81	0.90
Construction	3,929	1,048.0	0.82	0.97	0.97	0.97	1.08	0.97
Information	537	942.0	0.72	0.56	0.52	0.72	0.66	0.55
Natural resources and mining	670	863.0	1.03	0.95	0.71	0.67	0.69	0.84
All industries	52,116	847.0	0.83	0.79	0.91	0.88	0.90	0.87
Education and health services	10,875	845.8	0.92	0.82	0.91	0.92	0.99	0.93
Trade, transportation, and utilities	7,741	736.9	0.89	0.86	0.92	0.94	0.89	0.88
Unclassified	313	606.0			0.18	0.55		0.69
Other services	1,765	556.7	0.91	0.90	0.91	1.00	0.97	0.83
Leisure and hospitality	9,042	385.0	0.94	0.84	0.84	0.85	0.89	0.92

Source: BLS, QCEW; Calculations by Marin Economic Consulting

Graphical Display of Weekly Wage Evolution by Industry (Super Sector)

Graphs present only Q 3 data for each year.

Figure 1: 1028: Public administration

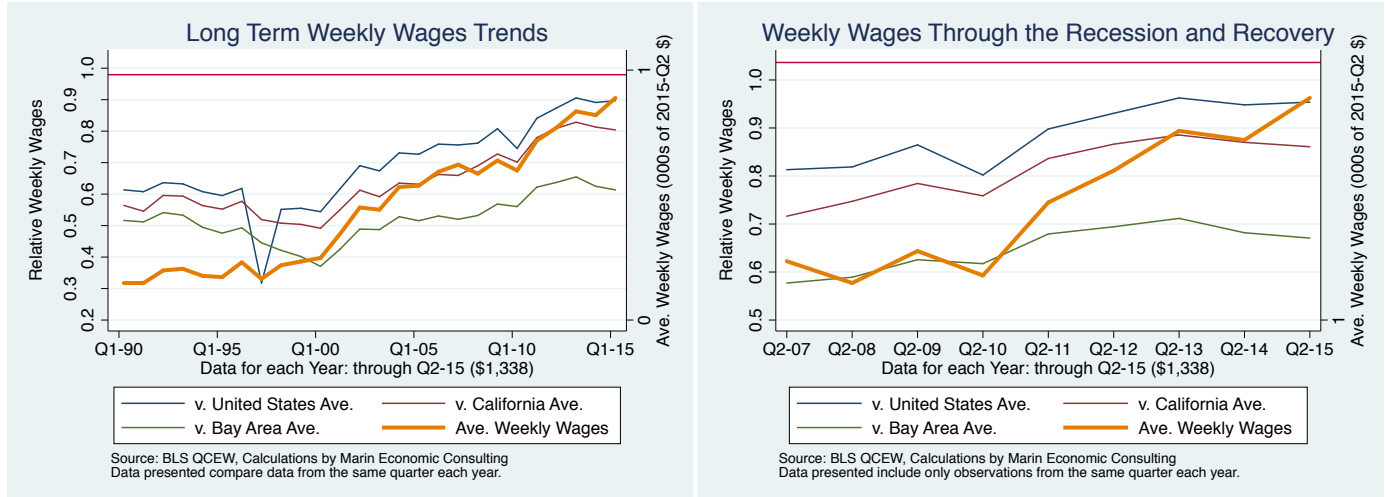


Figure 2: 1023: Financial activities

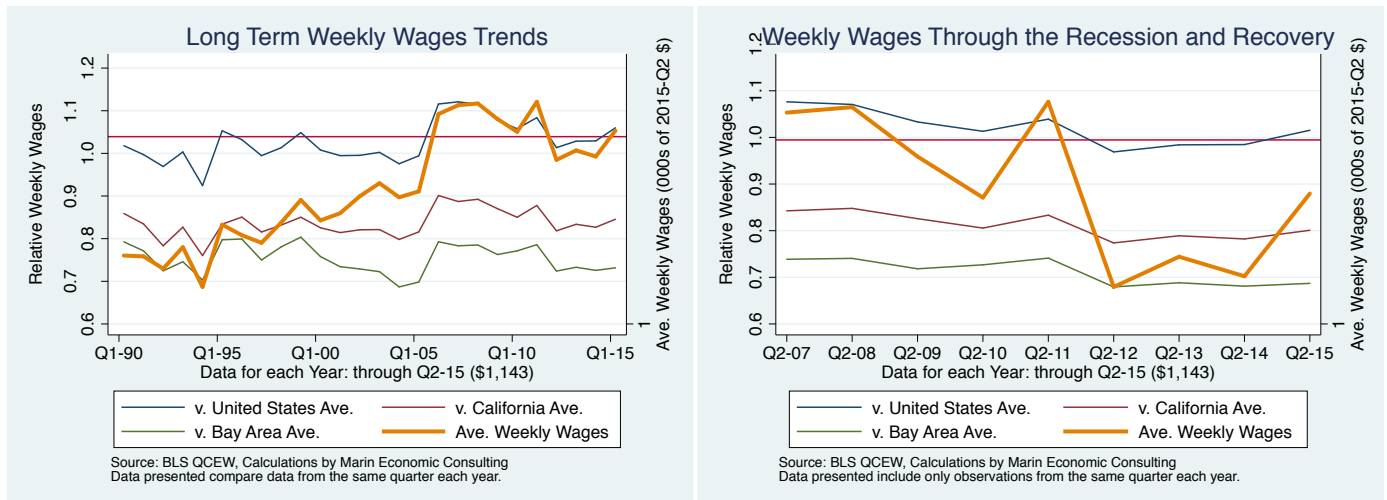


Figure 3: 1024: Professional and business services

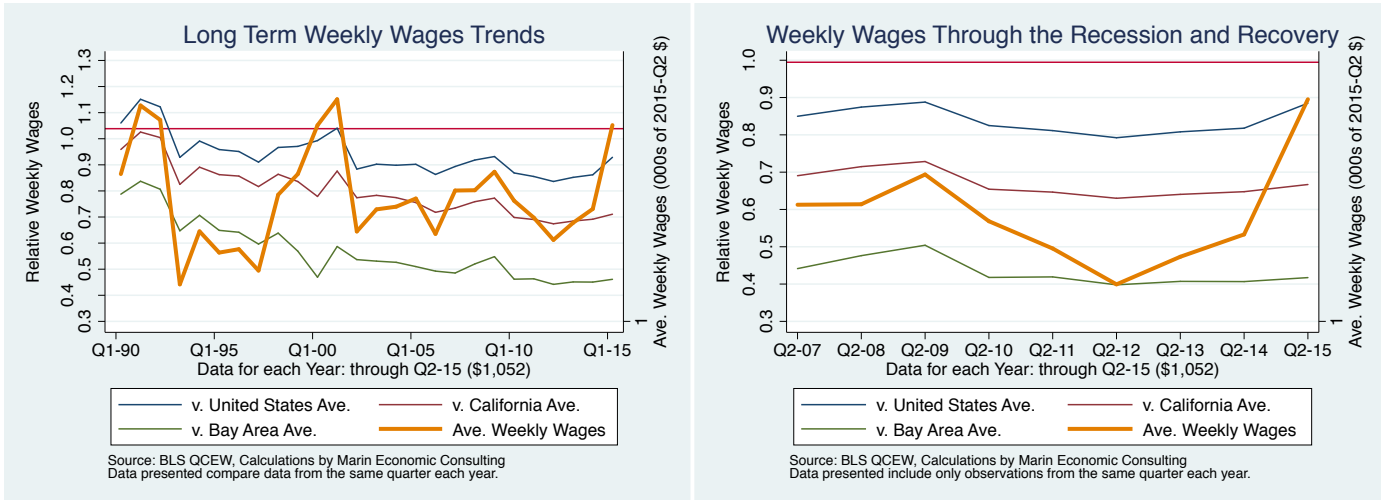


Figure 4: 1013: Manufacturing

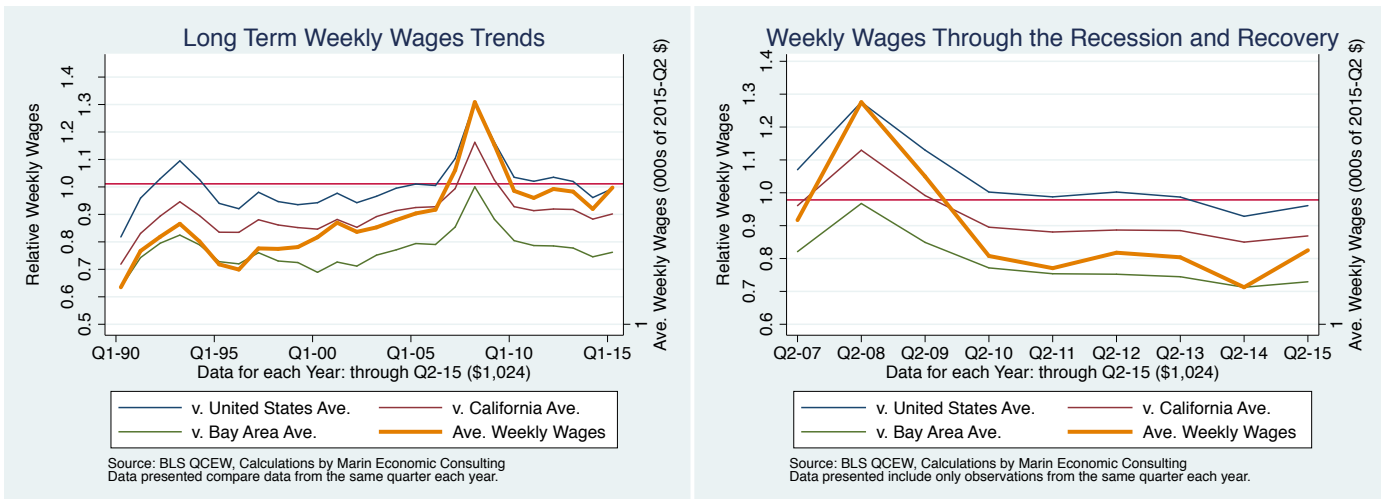


Figure 5: 1012: Construction

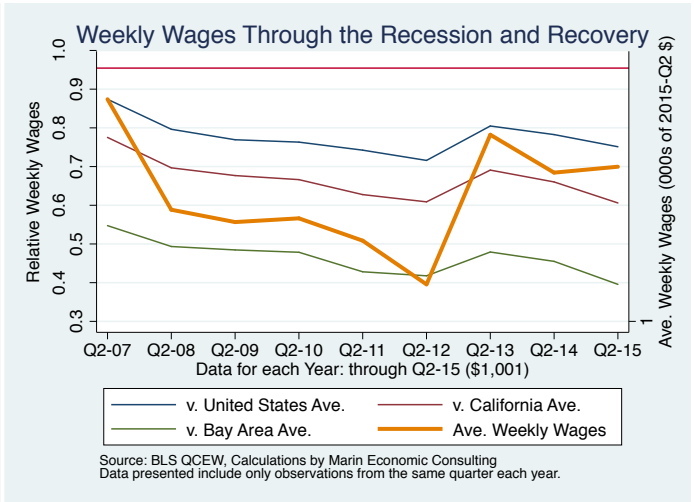
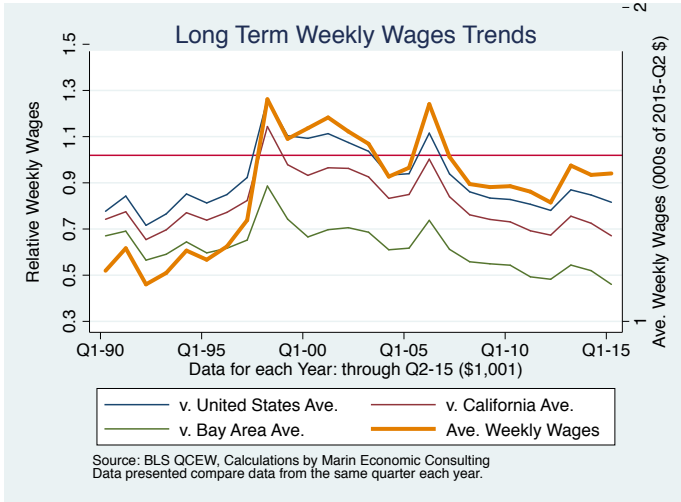


Figure 6: 1022: Information

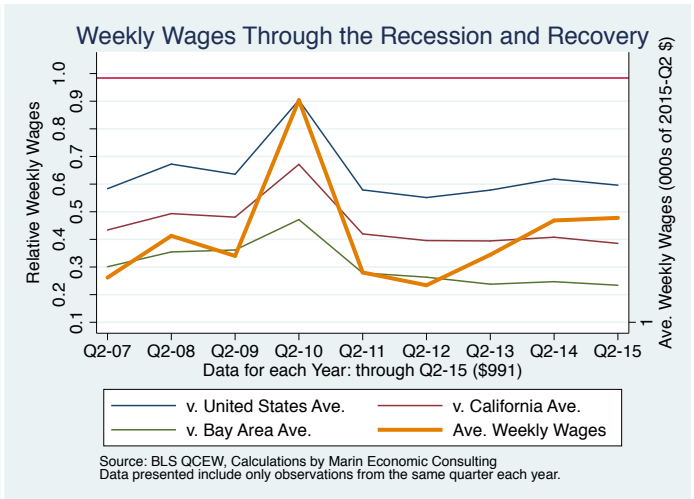
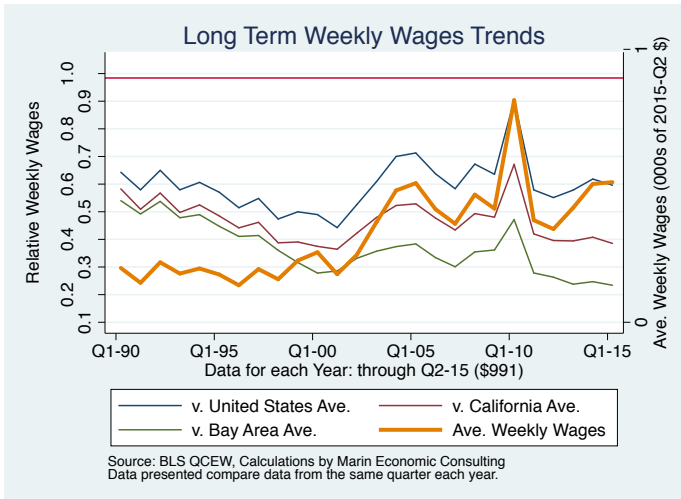


Figure 7: 1011: Natural resources and mining

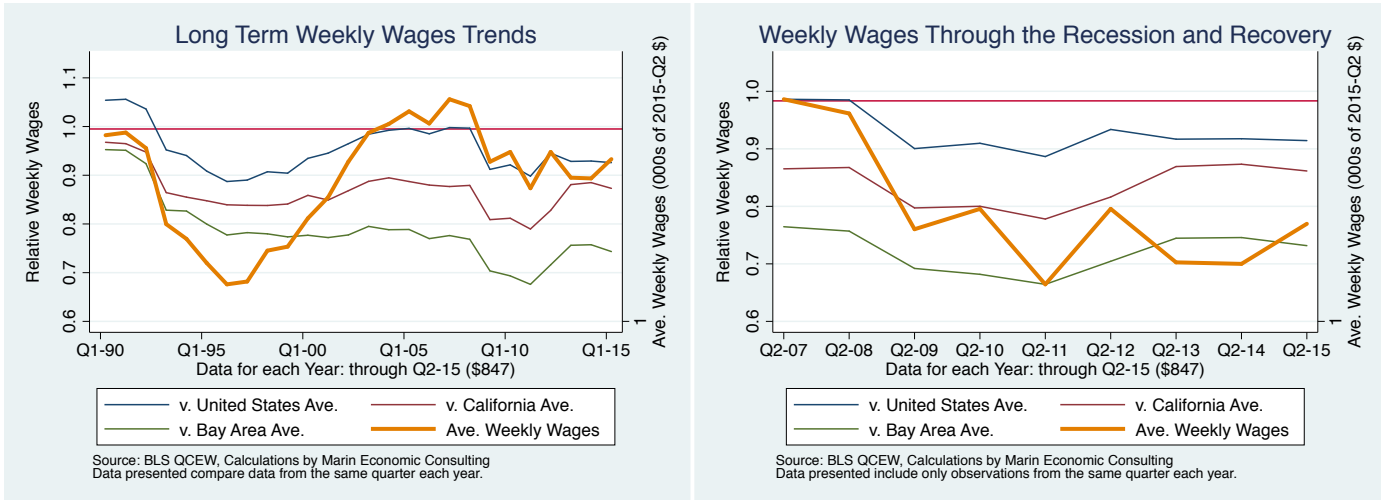


Figure 8: 10: All industries

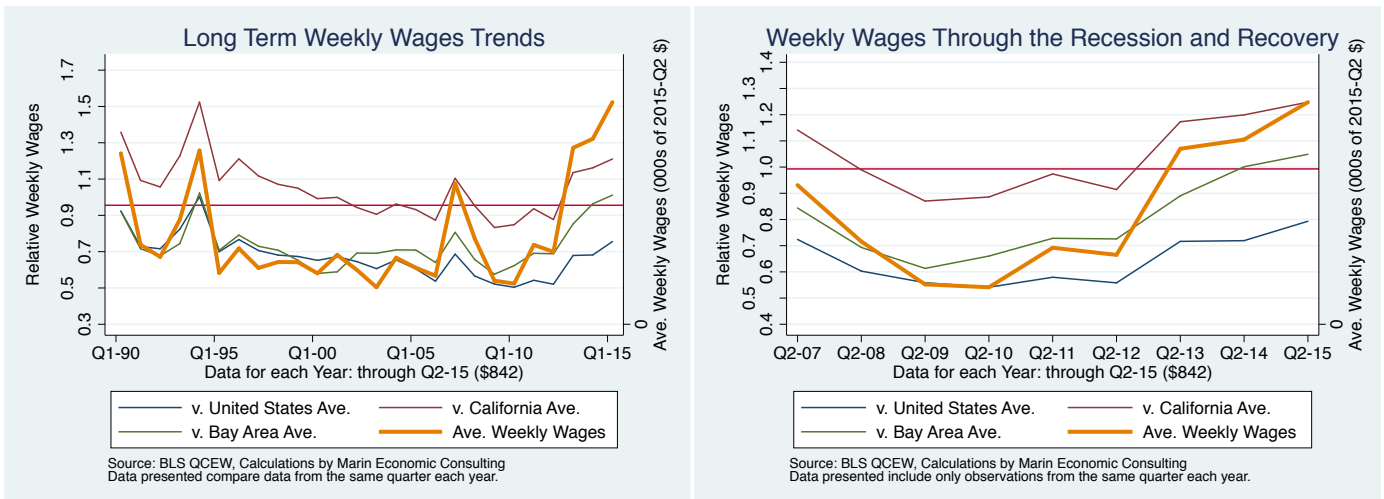


Figure 9: **1025: Education and health services**

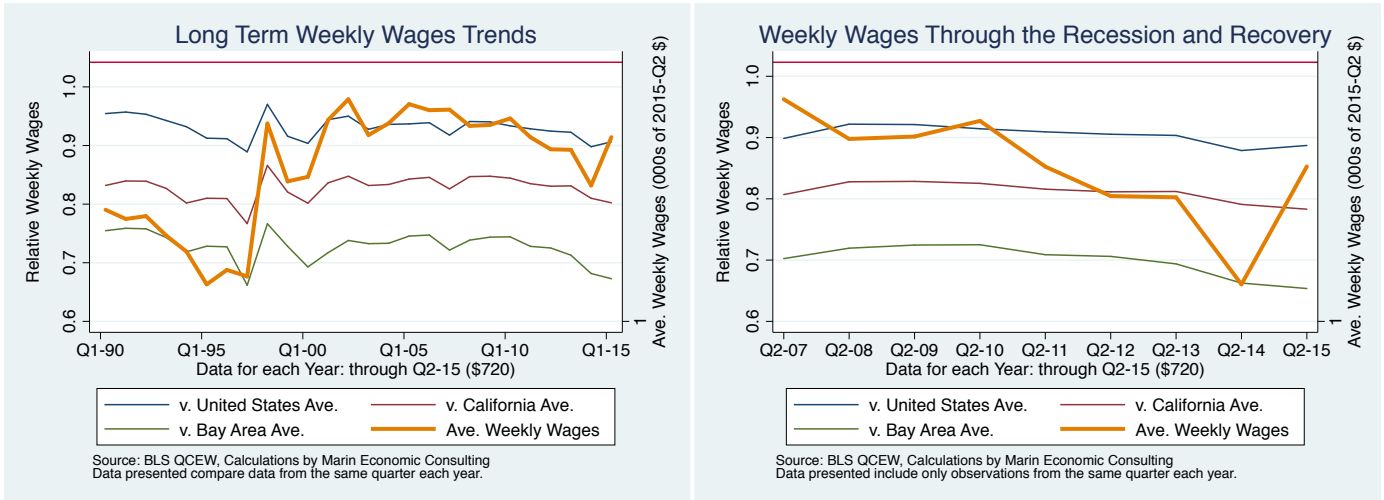


Figure 10: **1021: Trade, transportation, and utilities**

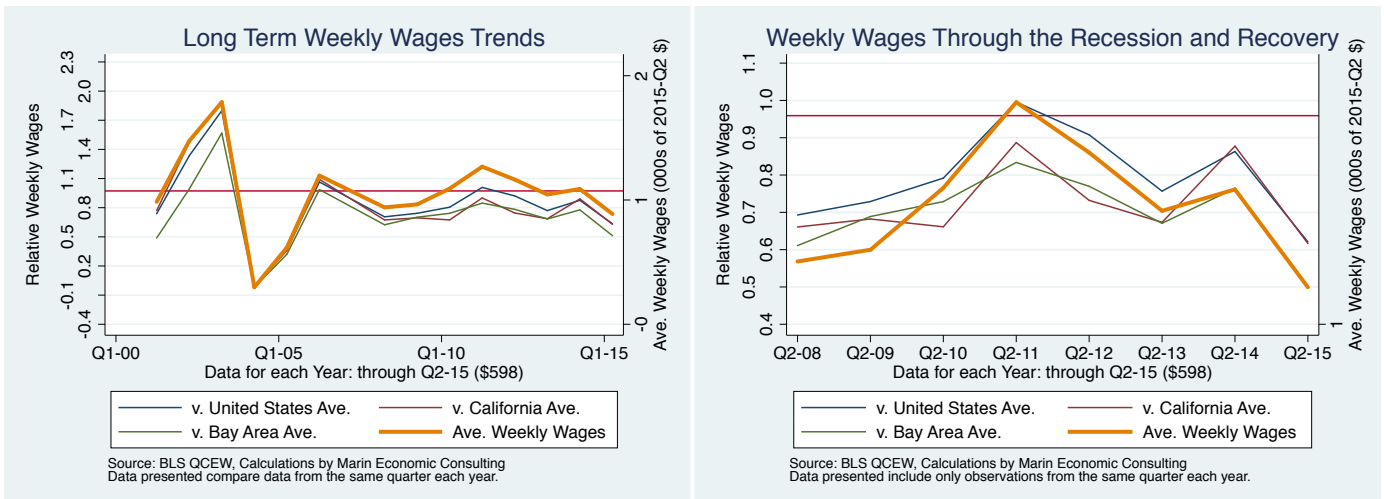


Figure 11: 1029: Unclassified

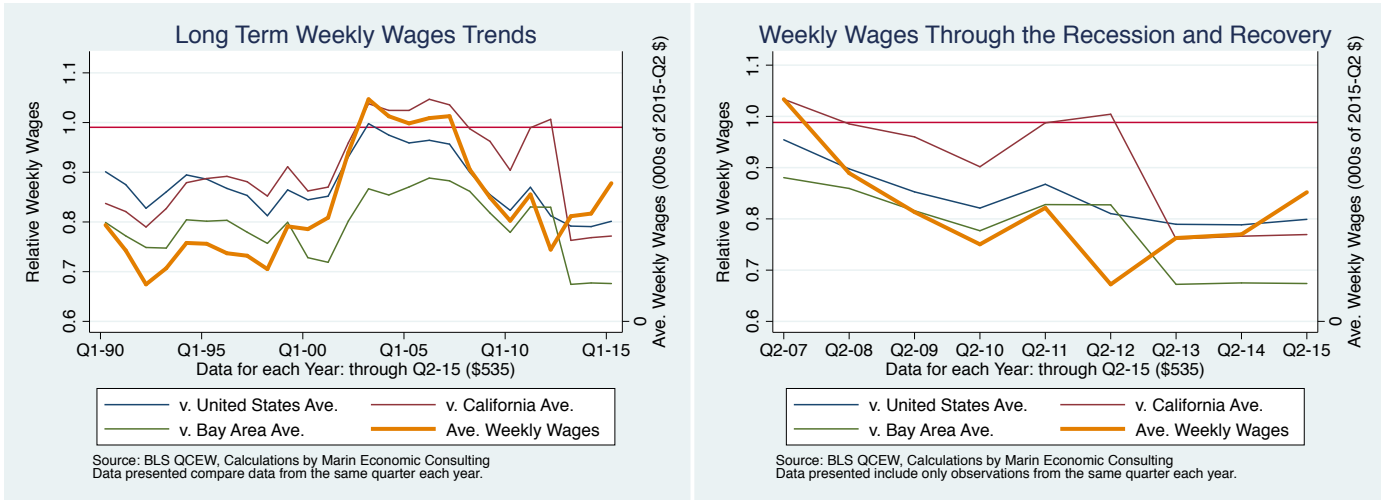


Figure 12: 1027: Other services

