

# Fresno County Weekly Wages

Focus on Post-Recession Recovery

Q 3 – 2015 Update

*Produced by:*

**Marin Economic Consulting**

March 15, 2016

Jon Haveman, Principal

415-336-5705 or [Jon@MarinEconomicConsulting.com](mailto:Jon@MarinEconomicConsulting.com)

## **Contents**

Descriptions and References	2
Overview of Wage Changes Since Onset of Recession	3
Weekly Wages Over Time	4
Graphical Display of Weekly Wage Evolution by Industry (Super Sector)	5

## Descriptions and References

The contents of this report illustrate the evolution of Fresno County wage patterns over time. This report presents:

**Wages:** Average weekly wages for the industry in the region. They are inflation adjusted to current dollars using: Consumer Price Index for All Urban Consumers: All Items, from the FRED Database maintained by the St. Louis Federal Reserve Bank.

The data underlying this report are from the Bureau of Labor Statistics: Quarterly Census of Employment and Wages (QCEW). These data are available on a quarterly basis, generally with a 5 month lag from the end of the quarter to the release of the data.

**QCEW:** The Quarterly Census of Employment and Wages (QCEW) program publishes a quarterly count of employment and wages reported by employers covering 98 percent of U.S. jobs, available at the county, MSA, state and national levels by industry. <http://www.bls.gov/cew/home.htm>

**Time Period:** The data extend from Q1-1990 through Q 3 - 2015

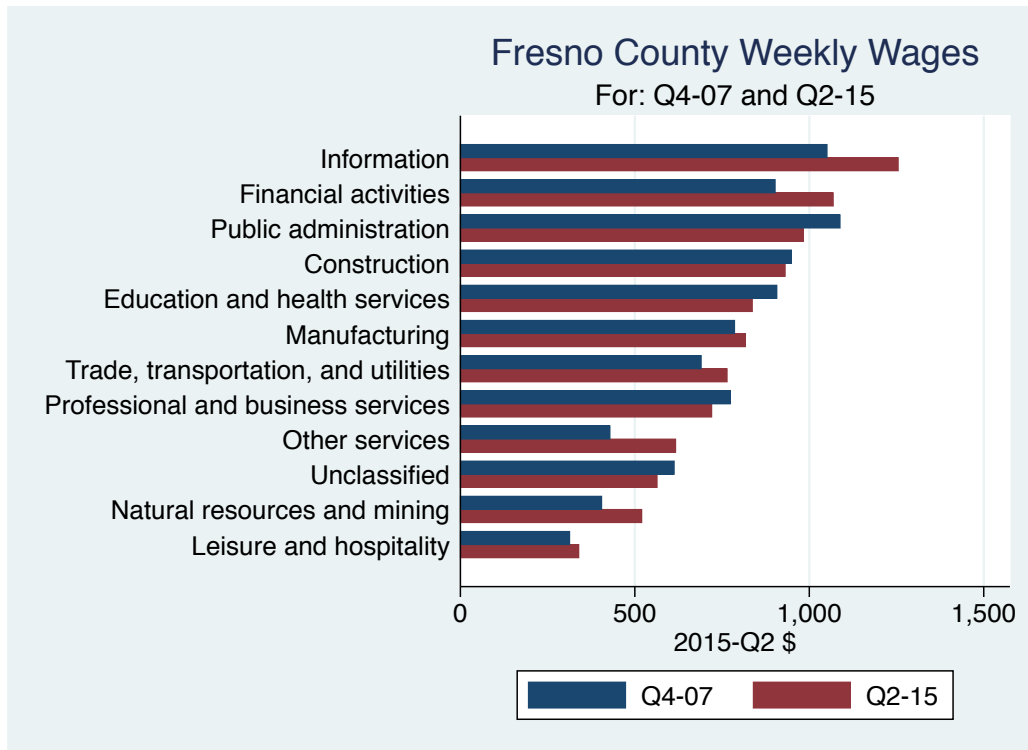
**Seasonality:** There is a significant seasonal component to many industries. The QCEW data are not seasonally adjusted. Rather than seasonally adjusting the data, most comparisons in this report are between the same quarter in different years. The data presented are therefore the actual employment levels and wages (inflation adjusted) compared across years.

A particular focus of this report is on the post-Great Recession recovery. This is accomplished by comparing the most recent quarter of data to the same quarter in 2007, the last non-recessionary year for most of California and the United States.

Notes:

**Notes:** There are occasions where the data displayed seem to reflect implausible increases in either employment or wages. These changes are as reported in the QCEW data. For a closer look at these changes, please contact: [Jon@MarinEconomicConsulting.com](mailto:Jon@MarinEconomicConsulting.com)

## Overview of Wage Changes Since the Onset of the Great Recession



**Table: Quarterly Summary for Q 3 – 2015**

Sector	Levels in Q 3 – 2015		Change vs Q 3 in 2007					
	Employment	Wages	Relative to:		Employment	Wages	Relative to:	
			Bay	U.S.			Bay	U.S.
Information	3,902	1,284.0	0.3	0.7	-453	309.00	-0.13	-0.04
Public administration	17,512	1,210.1	0.7	1.0	-7,206	218.29	0.01	0.01
Financial activities	13,287	1,038.3	0.5	0.7	-2,172	202.02	-0.01	0.02
Construction	15,427	989.0	0.7	0.9	-5,591	187.00	-0.00	-0.00
Education and health services	91,532	862.7	0.7	0.9	27,759	89.46	-0.02	-0.05
Manufacturing	27,128	837.0	0.3	0.7	-2,788	118.00	-0.02	-0.01
All industries	371,671	772.0	0.5	0.8	4,291	128.00	-0.04	0.01
Trade, transportation, and utilities	65,934	771.7	0.7	0.9	1,518	122.66	-0.01	0.02
Professional and business services	31,537	741.7	0.4	0.6	518	52.67	-0.09	-0.09
Other services	10,725	631.0	0.8	0.9	-6,870	213.71	0.07	0.16
Natural resources and mining	54,714	555.0	0.7	0.5	-6,756	169.00	0.13	0.07
Unclassified	1,311	543.7	0.5	0.6	1,304	154.71	0.00	0.13
Leisure and hospitality	33,327	341.5	0.6	0.8	3,358	33.89	-0.06	-0.05
<b>Total</b>	<b>738,007</b>							

Source: BLS, QCEW; Calculations by Marin Economic Consulting

# Weekly Wages Over Time

**Table: Summary of Weekly Wages versus the Bay Area as A Whole**

Sector	Q 3 – 2015		Relative Wages: Q 3 of Each Year					
	Employment	Wages	1990	1995	2001	2004	2007	2015
Information	3,902	1,284.0	0.80	0.64	0.47	0.49	0.43	0.31
Public administration	17,512	1,210.1	0.79	0.74	0.75	0.77	0.71	0.72
Financial activities	13,287	1,038.3	0.71	0.62	0.52	0.53	0.48	0.47
Construction	15,427	989.0	0.73	0.70	0.64	0.71	0.70	0.70
Education and health services	91,532	862.7	0.95	0.89	0.88	0.82	0.77	0.75
Manufacturing	27,128	837.0	0.59	0.48	0.42	0.40	0.36	0.33
All industries	371,671	772.0	0.65	0.57	0.53	0.56	0.52	0.48
Trade, transportation, and utilities	65,934	771.7	0.79	0.74	0.69	0.72	0.68	0.68
Professional and business services	31,537	741.7	0.70	0.54	0.45	0.47	0.44	0.35
Other services	10,725	631.0	0.80	0.72	0.68	0.69	0.73	0.80
Natural resources and mining	54,714	555.0	0.47	0.48	0.47	0.59	0.55	0.68
Unclassified	1,311	543.7			0.41	0.72	0.48	0.48
Leisure and hospitality	33,327	341.5	0.72	0.64	0.66	0.65	0.68	0.62

Source: BLS, QCEW; Calculations by Marin Economic Consulting

**Table: Summary of Weekly Wages versus California as A Whole**

Sector	Q 3 – 2015		Relative Wages: Q 3 of Each Year					
	Employment	Wages	1990	1995	2001	2004	2007	2015
Information	3,902	1,284.0	0.81	0.71	0.59	0.64	0.61	0.49
Public administration	17,512	1,210.1	0.83	0.79	0.83	0.83	0.80	0.80
Financial activities	13,287	1,038.3	0.77	0.71	0.64	0.64	0.61	0.63
Construction	15,427	989.0	0.82	0.81	0.80	0.84	0.82	0.84
Education and health services	91,532	862.7	0.96	0.96	0.99	0.95	0.88	0.89
Manufacturing	27,128	837.0	0.74	0.66	0.61	0.60	0.59	0.55
All industries	371,671	772.0	0.73	0.69	0.70	0.72	0.69	0.68
Trade, transportation, and utilities	65,934	771.7	0.87	0.82	0.81	0.83	0.81	0.83
Professional and business services	31,537	741.7	0.77	0.67	0.61	0.64	0.61	0.50
Other services	10,725	631.0	0.83	0.79	0.83	0.83	0.84	0.90
Natural resources and mining	54,714	555.0	0.67	0.68	0.76	0.74	0.71	0.81
Unclassified	1,311	543.7			0.55	0.73	0.44	0.60
Leisure and hospitality	33,327	341.5	0.73	0.66	0.70	0.67	0.72	0.68

Source: BLS, QCEW; Calculations by Marin Economic Consulting

**Table: Summary of Weekly Wages versus the United States as A Whole**

Sector	Q 3 – 2015		Relative Wages: Q 3 of Each Year					
	Employment	Wages	1990	1995	2001	2004	2007	2015
Information	3,902	1,284.0	0.93	0.79	0.75	0.83	0.79	0.74
Public administration	17,512	1,210.1	1.02	0.98	1.05	1.06	1.02	1.03
Financial activities	13,287	1,038.3	0.83	0.78	0.73	0.75	0.70	0.72
Construction	15,427	989.0	0.92	0.91	0.89	0.91	0.92	0.92
Education and health services	91,532	862.7	1.03	1.02	1.08	1.04	1.00	0.95
Manufacturing	27,128	837.0	0.84	0.75	0.72	0.71	0.73	0.71
All industries	371,671	772.0	0.81	0.76	0.79	0.81	0.79	0.79
Trade, transportation, and utilities	65,934	771.7	1.00	0.93	0.91	0.93	0.90	0.92
Professional and business services	31,537	741.7	0.81	0.74	0.70	0.71	0.69	0.60
Other services	10,725	631.0	0.89	0.80	0.81	0.79	0.78	0.95
Natural resources and mining	54,714	555.0	0.46	0.45	0.52	0.52	0.47	0.54
Unclassified	1,311	543.7			0.48	0.70	0.49	0.62
Leisure and hospitality	33,327	341.5	0.87	0.73	0.82	0.83	0.87	0.82

Source: BLS, QCEW; Calculations by Marin Economic Consulting

# Graphical Display of Weekly Wage Evolution by Industry (Super Sector)

Graphs present only Q 3 data for each year.

Figure 1: **1022: Information**

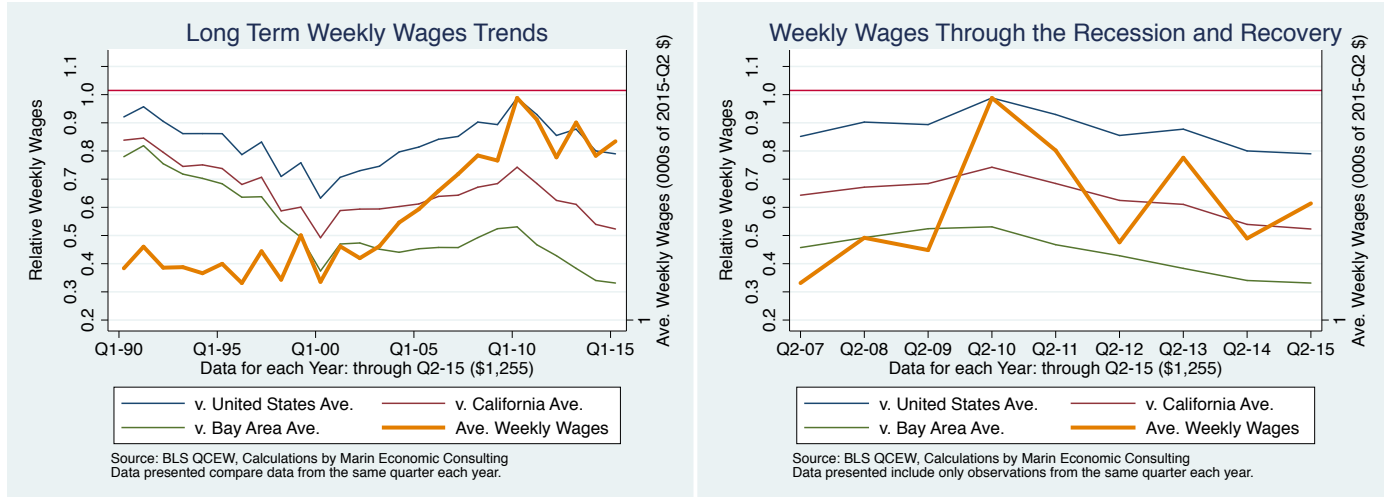


Figure 2: **1028: Public administration**

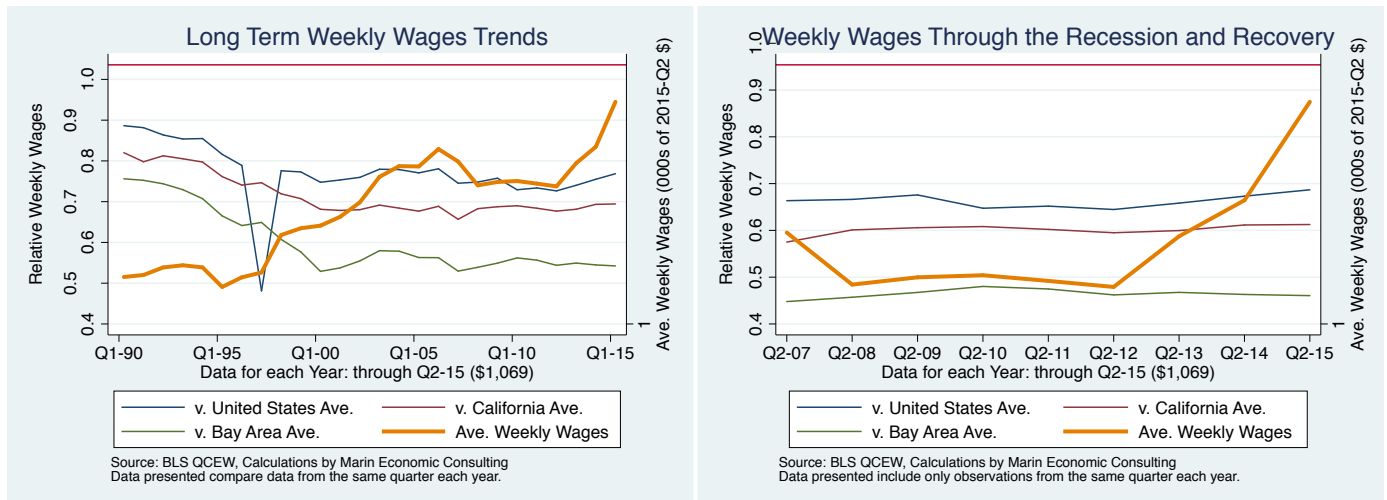


Figure 3: 1023: Financial activities

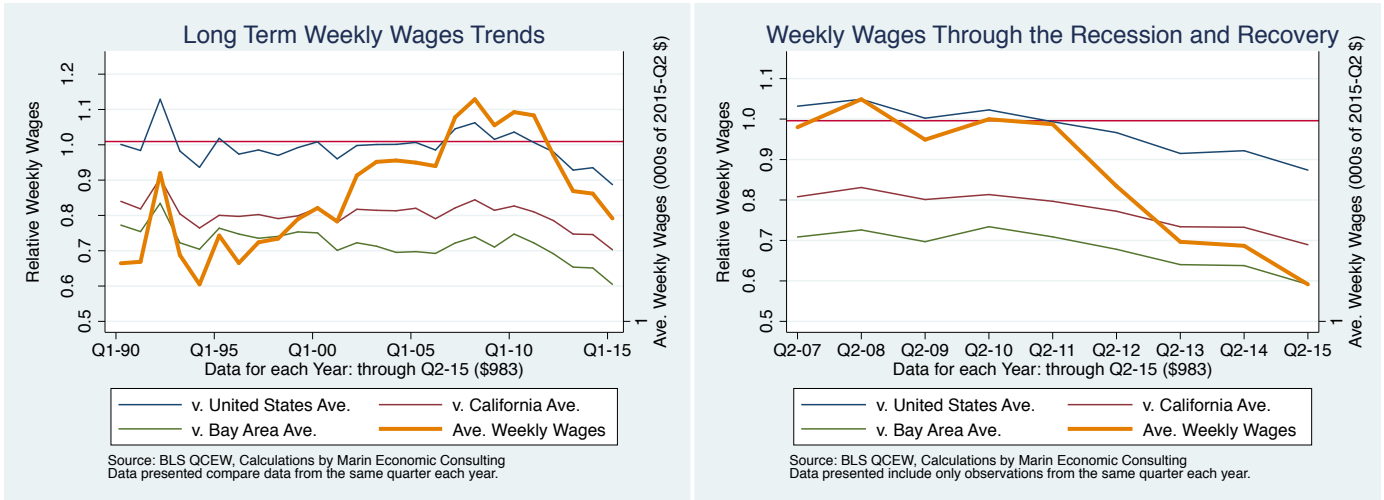


Figure 4: 1012: Construction

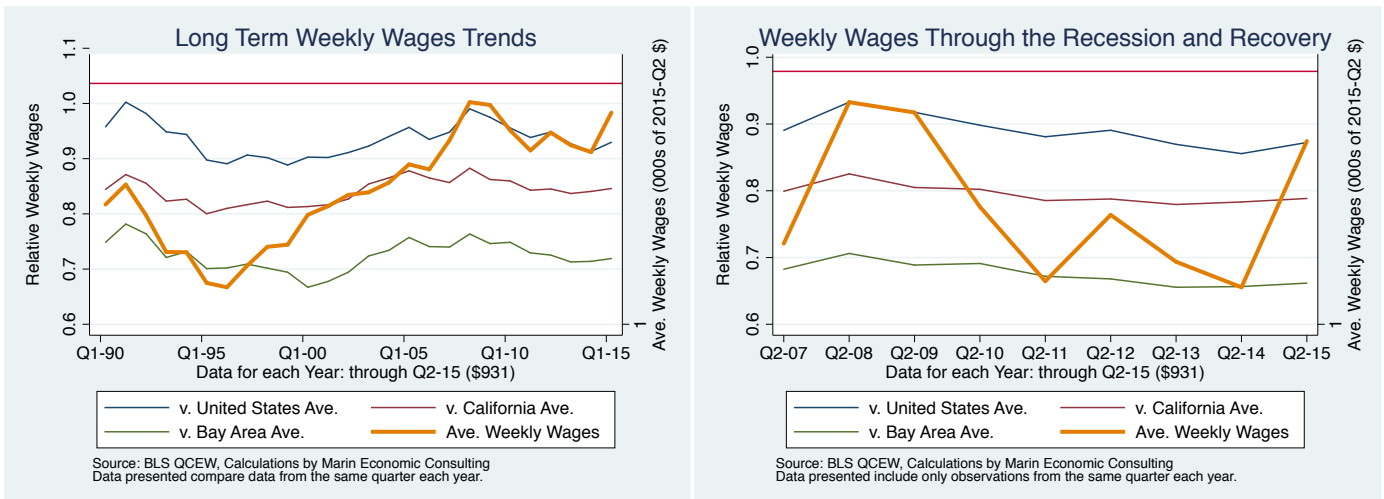


Figure 5: 1025: Education and health services

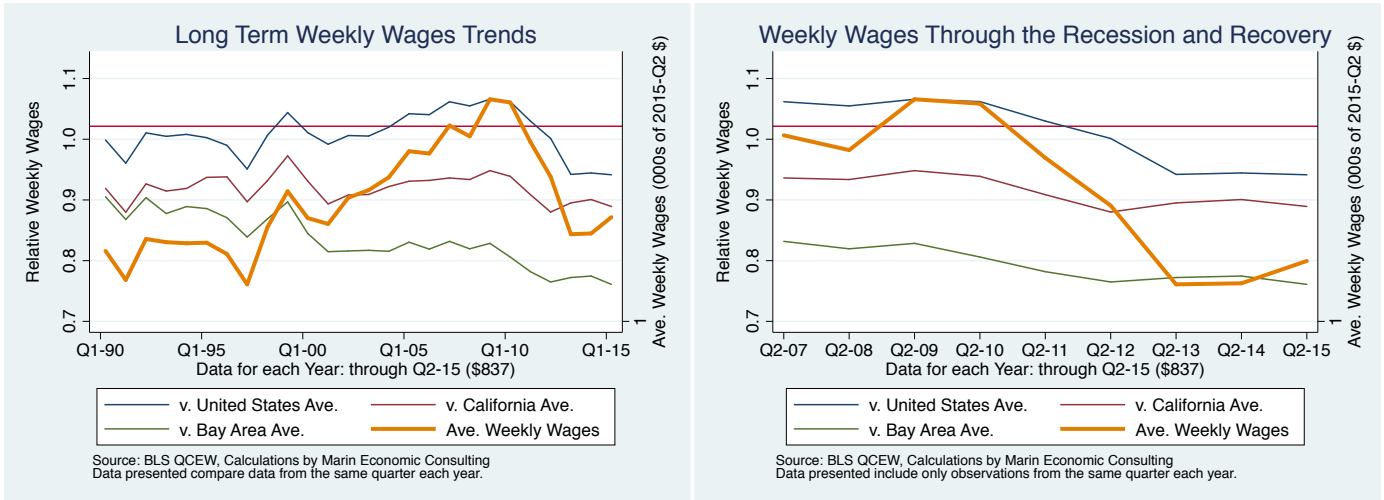


Figure 6: 1013: Manufacturing

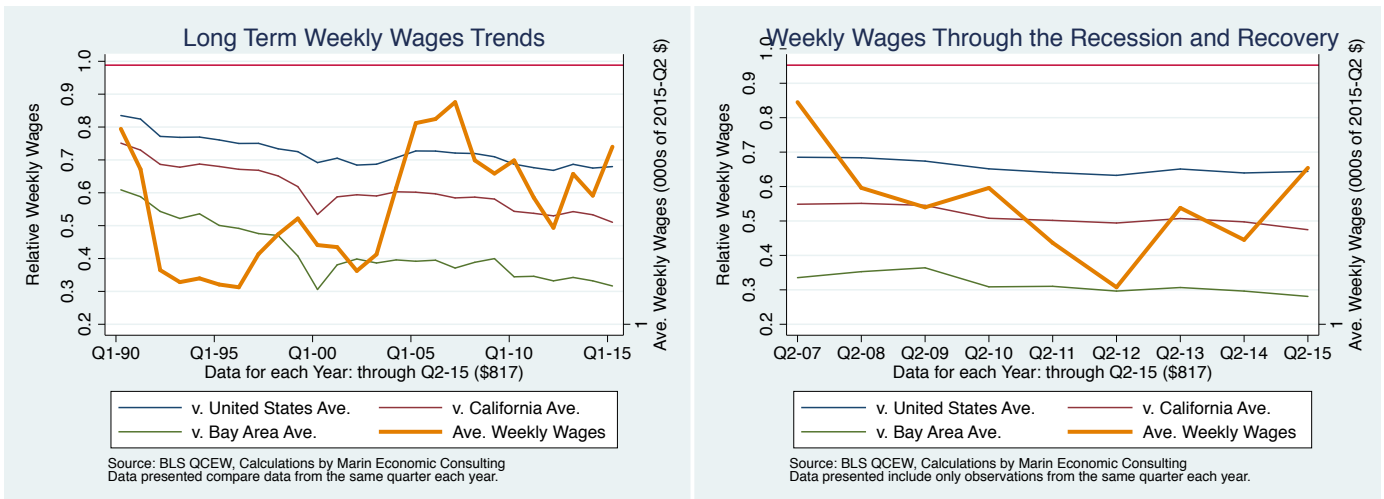


Figure 7: **10: All industries**

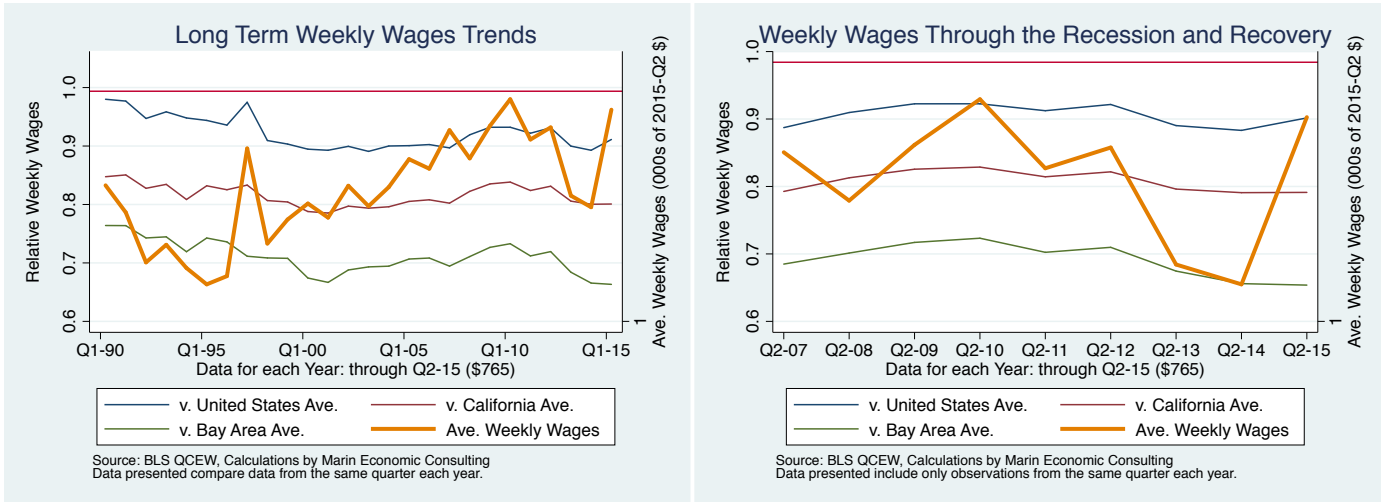


Figure 8: **1021: Trade, transportation, and utilities**

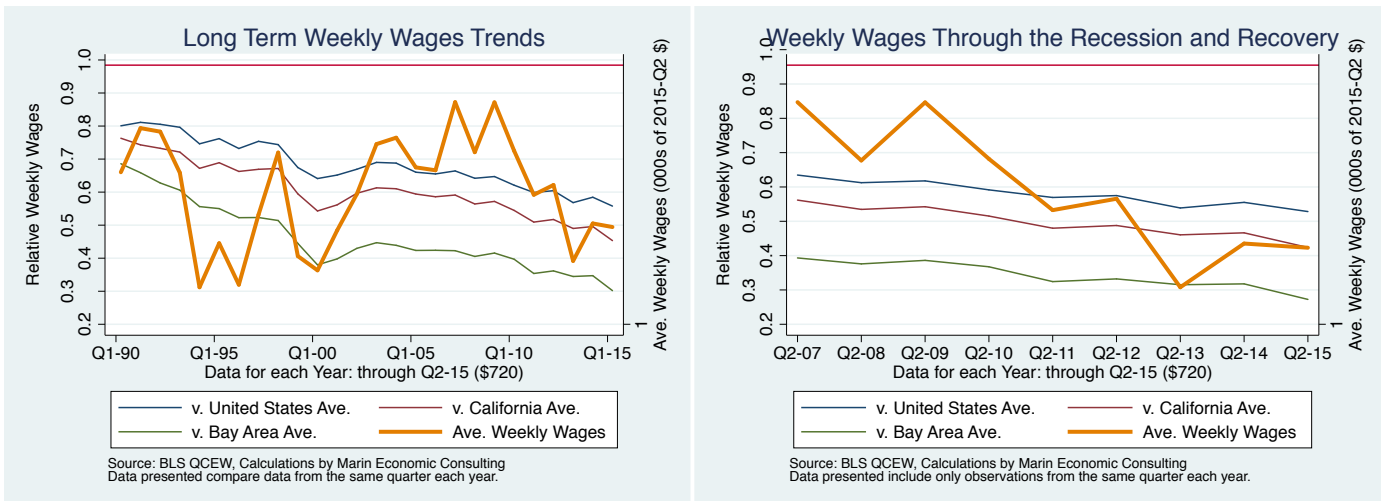




Figure 9: 1024: Professional and business services

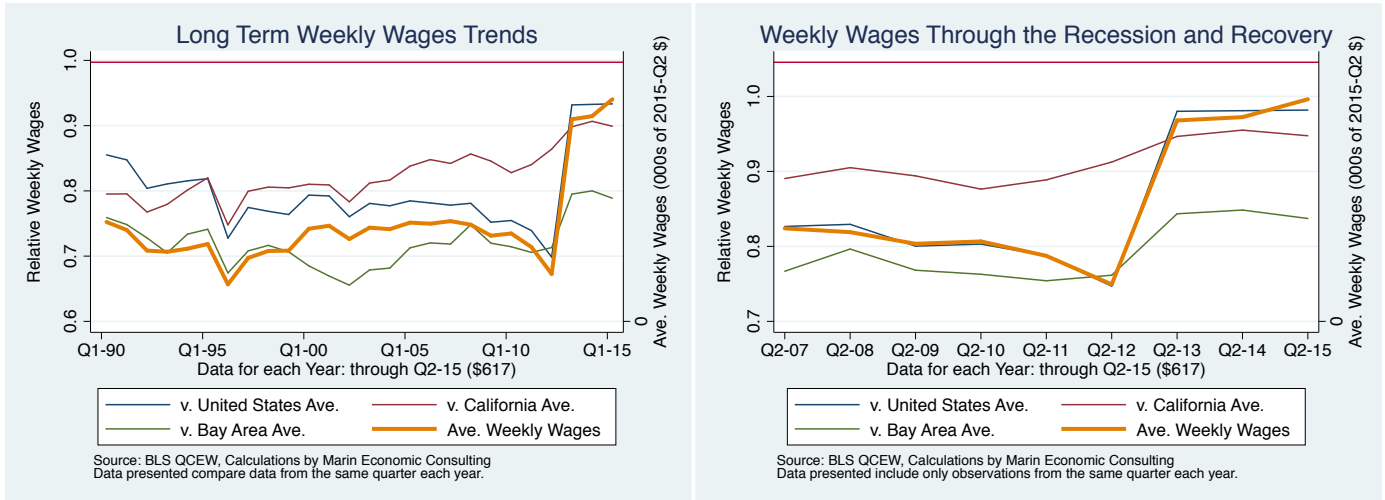


Figure 10: 1027: Other services

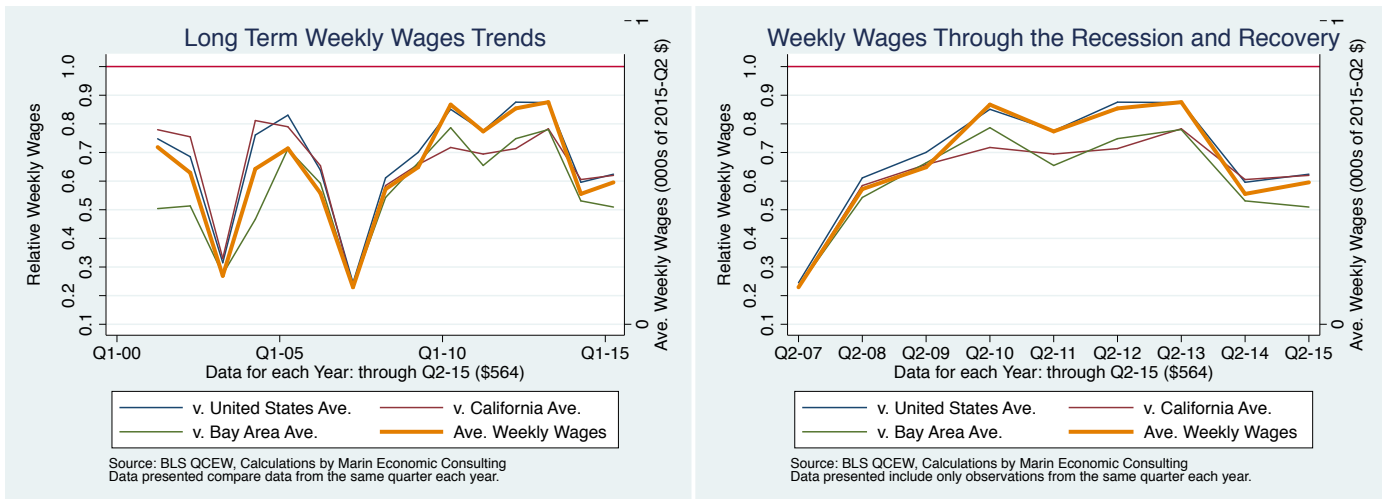


Figure 11: 1011: Natural resources and mining

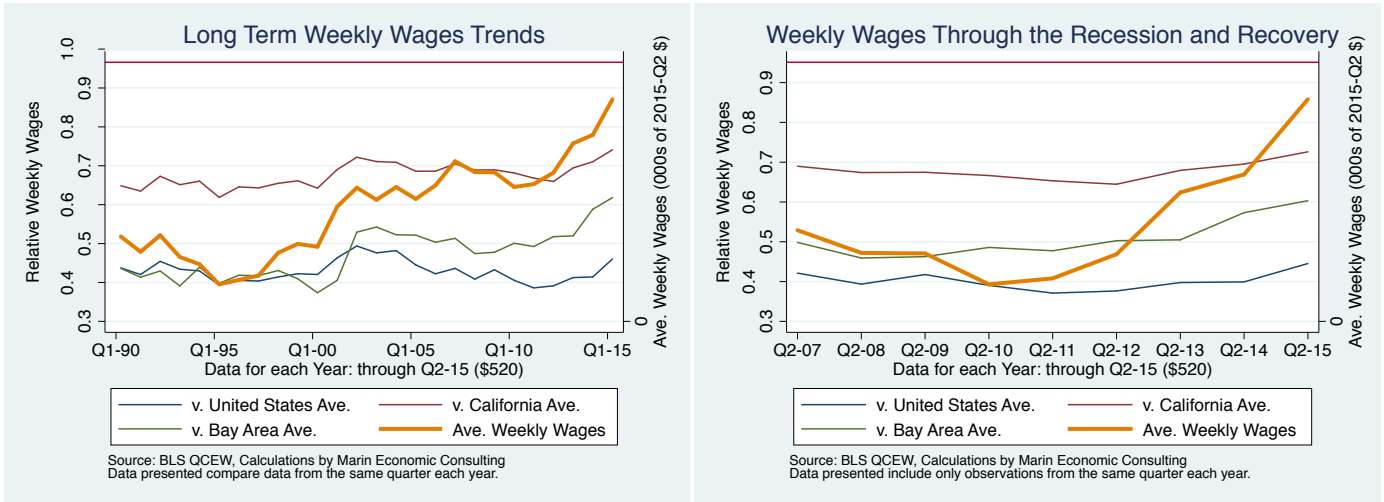


Figure 12: 1029: Unclassified

