

# Merced County Weekly Wages

Focus on Post-Recession Recovery

Q 3 – 2015 Update

*Produced by:*

**Marin Economic Consulting**

March 16, 2016

Jon Haveman, Principal

415-336-5705 or [Jon@MarinEconomicConsulting.com](mailto:Jon@MarinEconomicConsulting.com)

## **Contents**

1. Descriptions and References	2
2. Overview of Wage Changes Since the Onset of the Great Recession	3
3. Weekly Wages Over Time	4
4. Graphical Display of Weekly Wage Evolution by Industry (Super Sector)	5

# 1. Descriptions and References

The contents of this report illustrate the evolution of Merced County wage patterns over time. This report presents:

**Wages:** Average weekly wages for the industry in the region. They are inflation adjusted to current dollars using: Consumer Price Index for All Urban Consumers: All Items, from the FRED Database maintained by the St. Louis Federal Reserve Bank.

The data underlying this report are from the Bureau of Labor Statistics: Quarterly Census of Employment and Wages (QCEW). These data are available on a quarterly basis, generally with a 5 month lag from the end of the quarter to the release of the data.

**QCEW:** The Quarterly Census of Employment and Wages (QCEW) program publishes a quarterly count of employment and wages reported by employers covering 98 percent of U.S. jobs, available at the county, MSA, state and national levels by industry. <http://www.bls.gov/cew/home.htm>

**Time Period:** The data extend from Q1-1990 through Q 3 - 2015

**Seasonality:** There is a significant seasonal component to many industries. The QCEW data are not seasonally adjusted. Rather than seasonally adjusting the data, most comparisons in this report are between the same quarter in different years. The data presented are therefore the actual employment levels and wages (inflation adjusted) compared across years.

A particular focus of this report is on the post-Great Recession recovery. This is accomplished by comparing the most recent quarter of data to the same quarter in 2007, the last non-recessionary year for most of California and the United States.

Notes:

**Notes:** There are occasions where the data displayed seem to reflect implausible increases in either employment or wages. These changes are as reported in the QCEW data. For a closer look at these changes, please contact: [Jon@MarinEconomicConsulting.com](mailto:Jon@MarinEconomicConsulting.com)

## 2. Overview of Wage Changes Since the Onset of the Great Recession

Figure 2 - 1

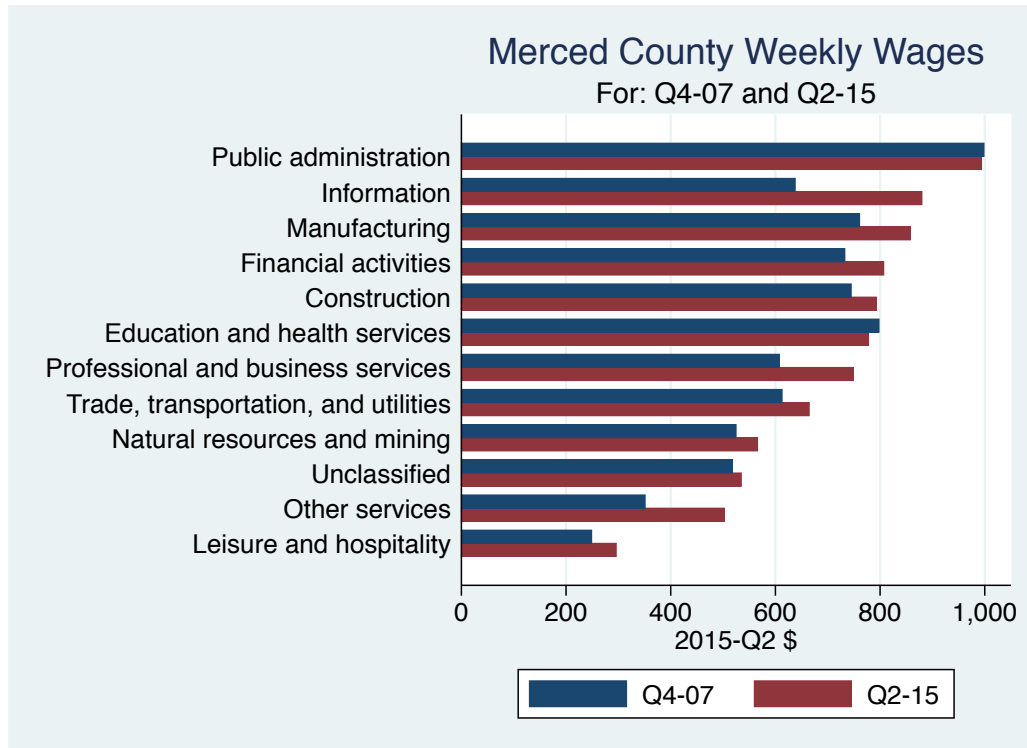


Table 2.1: Quarterly Summary for Q 3 – 2015

Sector	Levels in Q 3 – 2015		Change vs Q 3 in 2007					
	Employment	Wages	Relative to:		Employment		Wages	
			Bay	U.S.			Bay	U.S.
Public administration	3,610	1,117.8	0.7	1.0	-985	258.09	0.05	0.07
Information	312	881.0	0.2	0.5	-997	247.00	-0.07	-0.00
Manufacturing	11,409	852.0	0.3	0.7	1,375	133.00	-0.02	-0.00
Construction	1,971	846.0	0.6	0.8	-1,234	194.00	0.03	0.04
Financial activities	1,561	832.1	0.4	0.6	-419	132.69	-0.02	-0.01
Education and health services	16,767	814.9	0.7	0.9	3,389	59.60	-0.05	-0.08
All industries	79,639	743.0	0.5	0.8	7,080	131.00	-0.03	0.01
Professional and business services	4,005	734.9	0.3	0.6	-300	169.27	-0.02	0.03
Trade, transportation, and utilities	12,845	678.5	0.6	0.8	271	88.78	-0.03	-0.01
Natural resources and mining	16,878	566.0	0.7	0.6	3,530	71.00	-0.01	-0.05
Unclassified	211	524.0	0.5	0.6	210	154.00	0.01	0.13
Other services	1,231	515.9	0.7	0.8	-1,388	158.77	0.03	0.10
Leisure and hospitality	5,432	308.0	0.6	0.7	528	57.00	0.00	0.03
<b>Total</b>	<b>155,872</b>							

Source: BLS, QCEW; Calculations by Marin Economic Consulting

### 3. Weekly Wages Over Time

**Table3.1: Summary of Weekly Wages versus the Bay Area as A Whole**

Sector	Q 3 – 2015		Relative Wages: Q 3 of Each Year					
	Employment	Wages	1990	1995	2001	2004	2007	2015
Public administration	3,610	1,117.8	0.68	0.66	0.63	0.69	0.62	0.67
Information	312	881.0	0.53	0.41	0.36	0.30	0.28	0.21
Manufacturing	11,409	852.0	0.55	0.47	0.41	0.40	0.36	0.34
Construction	1,971	846.0	0.58	0.55	0.49	0.57	0.57	0.60
Financial activities	1,561	832.1	0.63	0.55	0.40	0.45	0.40	0.38
Education and health services	16,767	814.9	0.86	0.70	0.75	0.75	0.75	0.71
All industries	79,639	743.0	0.60	0.54	0.49	0.52	0.50	0.46
Professional and business services	4,005	734.9	0.56	0.46	0.44	0.43	0.36	0.35
Trade, transportation, and utilities	12,845	678.5	0.68	0.71	0.62	0.64	0.62	0.59
Natural resources and mining	16,878	566.0	0.57	0.59	0.49	0.70	0.71	0.70
Unclassified	211	524.0			0.07	0.60	0.46	0.47
Other services	1,231	515.9	0.67	0.65	0.66	0.63	0.62	0.65
Leisure and hospitality	5,432	308.0	0.64	0.58	0.56	0.55	0.55	0.55

Source: BLS, QCEW; Calculations by Marin Economic Consulting

**Table3.2: Summary of Weekly Wages versus California as A Whole**

Sector	Q 3 – 2015		Relative Wages: Q 3 of Each Year					
	Employment	Wages	1990	1995	2001	2004	2007	2015
Public administration	3,610	1,117.8	0.71	0.70	0.70	0.75	0.69	0.74
Information	312	881.0	0.53	0.46	0.45	0.39	0.40	0.34
Manufacturing	11,409	852.0	0.68	0.65	0.60	0.60	0.59	0.56
Construction	1,971	846.0	0.66	0.64	0.61	0.67	0.67	0.72
Financial activities	1,561	832.1	0.68	0.63	0.49	0.54	0.51	0.50
Education and health services	16,767	814.9	0.87	0.75	0.85	0.86	0.86	0.84
All industries	79,639	743.0	0.67	0.65	0.63	0.67	0.66	0.66
Professional and business services	4,005	734.9	0.62	0.57	0.60	0.58	0.50	0.50
Trade, transportation, and utilities	12,845	678.5	0.76	0.79	0.73	0.74	0.73	0.73
Natural resources and mining	16,878	566.0	0.81	0.84	0.80	0.89	0.91	0.82
Unclassified	211	524.0			0.09	0.61	0.42	0.58
Other services	1,231	515.9	0.69	0.72	0.80	0.75	0.72	0.74
Leisure and hospitality	5,432	308.0	0.64	0.60	0.60	0.56	0.58	0.61

Source: BLS, QCEW; Calculations by Marin Economic Consulting

**Table3.3: Summary of Weekly Wages versus the United States as A Whole**

Sector	Q 3 – 2015		Relative Wages: Q 3 of Each Year					
	Employment	Wages	1990	1995	2001	2004	2007	2015
Public administration	3,610	1,117.8	0.88	0.86	0.89	0.96	0.88	0.95
Information	312	881.0	0.61	0.51	0.57	0.51	0.51	0.51
Manufacturing	11,409	852.0	0.77	0.74	0.71	0.71	0.73	0.73
Construction	1,971	846.0	0.74	0.72	0.68	0.73	0.74	0.78
Financial activities	1,561	832.1	0.74	0.69	0.56	0.63	0.58	0.58
Education and health services	16,767	814.9	0.94	0.80	0.93	0.95	0.97	0.89
All industries	79,639	743.0	0.74	0.71	0.72	0.76	0.75	0.76
Professional and business services	4,005	734.9	0.65	0.62	0.69	0.65	0.57	0.59
Trade, transportation, and utilities	12,845	678.5	0.87	0.90	0.82	0.83	0.82	0.81
Natural resources and mining	16,878	566.0	0.56	0.56	0.55	0.63	0.60	0.55
Unclassified	211	524.0			0.08	0.59	0.47	0.60
Other services	1,231	515.9	0.74	0.72	0.78	0.71	0.67	0.77
Leisure and hospitality	5,432	308.0	0.77	0.67	0.69	0.70	0.71	0.74

Source: BLS, QCEW; Calculations by Marin Economic Consulting

## 4. Graphical Display of Weekly Wage Evolution by Industry (Super Sector)

Graphs present only Q 3 data for each year.

Figure 4 - 1: 1028: Public administration

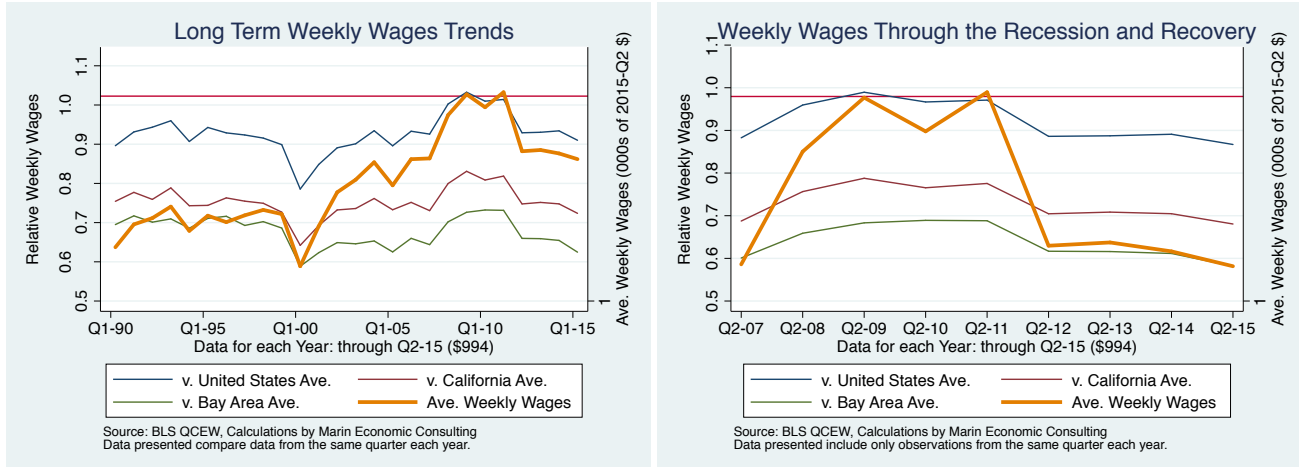


Figure 4 - 2: 1022: Information

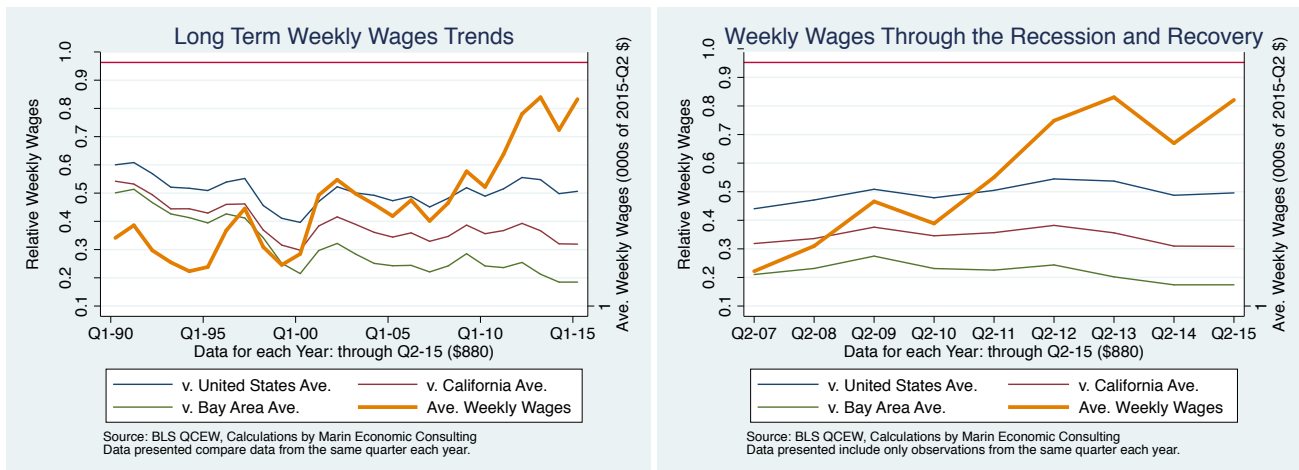


Figure 4 - 3: 1013: Manufacturing

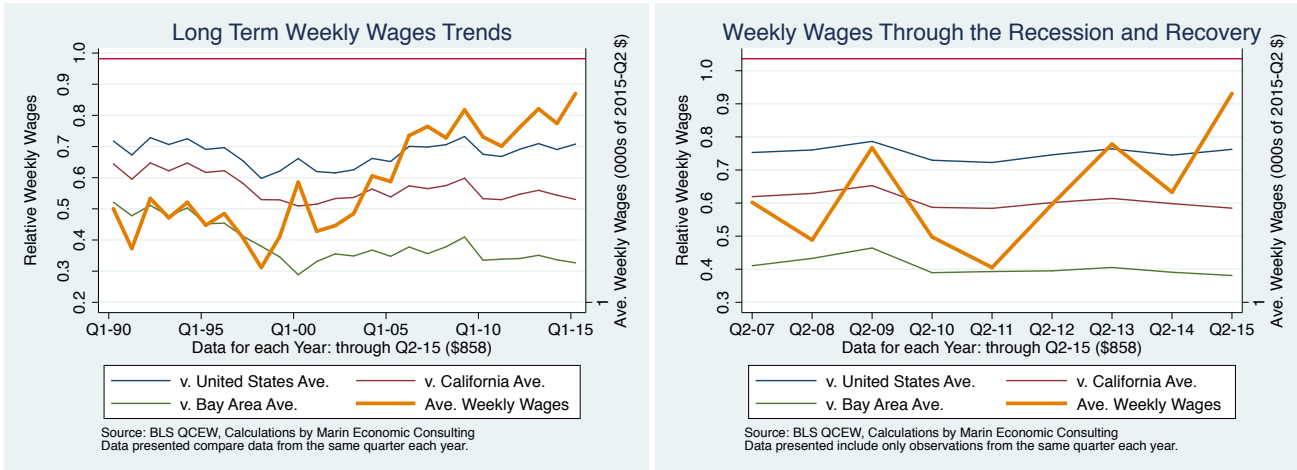


Figure 4 - 4: 1012: Construction

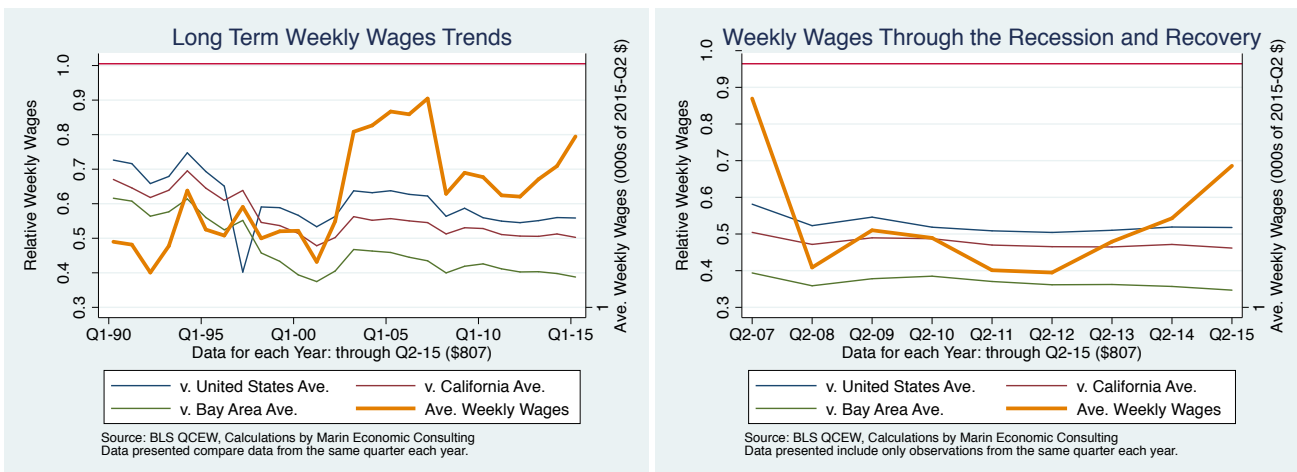


Figure 4 - 5: 1023: Financial activities

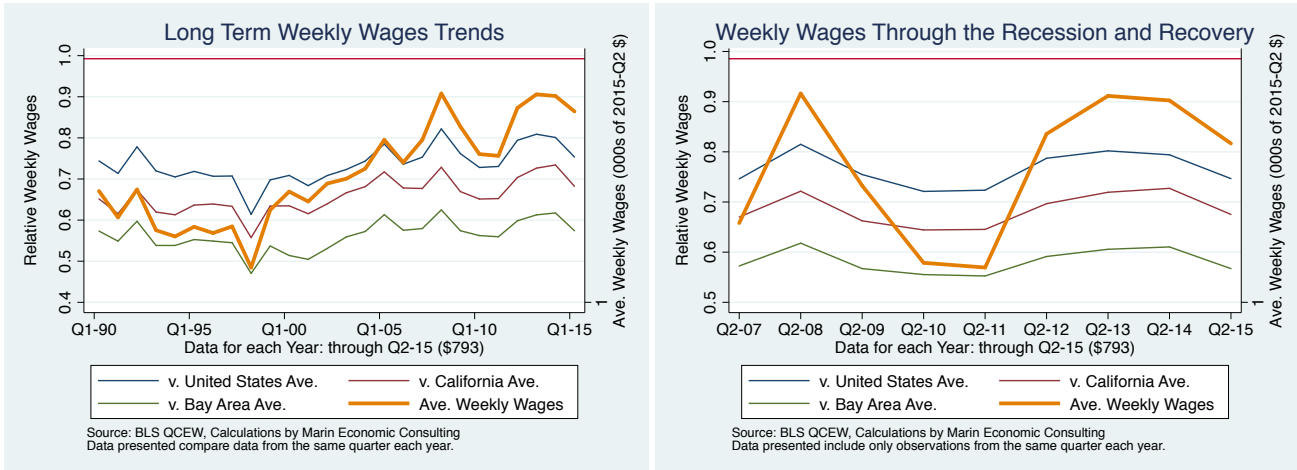


Figure 4 - 6: 1025: Education and health services

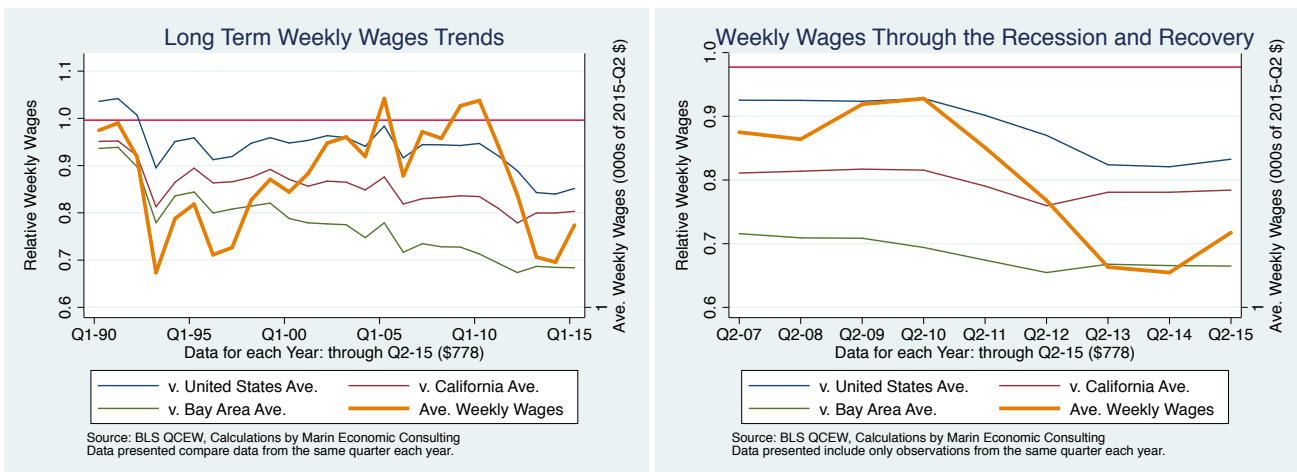


Figure 4 - 7: 10: All industries

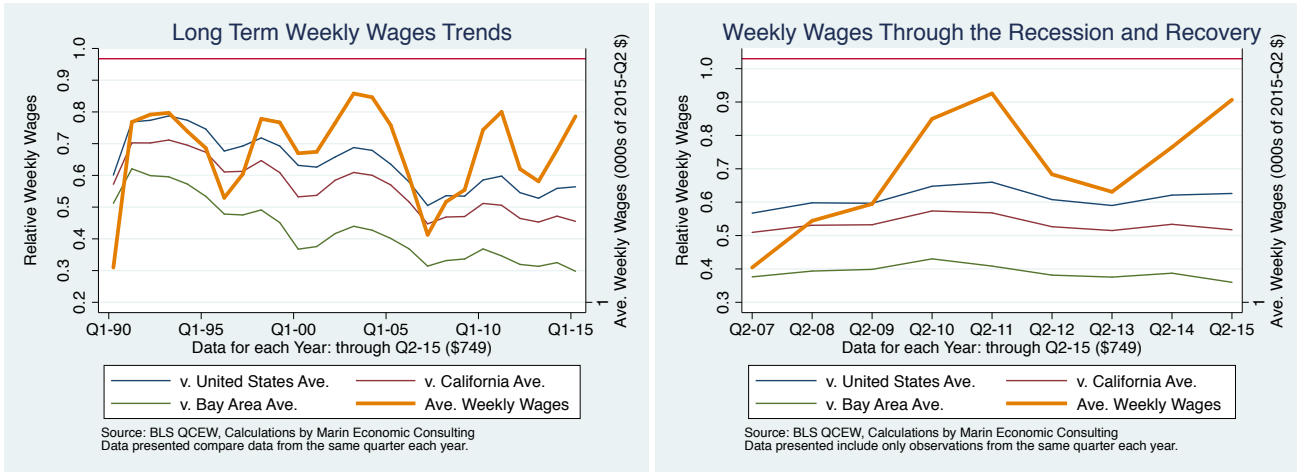


Figure 4 - 8: 1024: Professional and business services

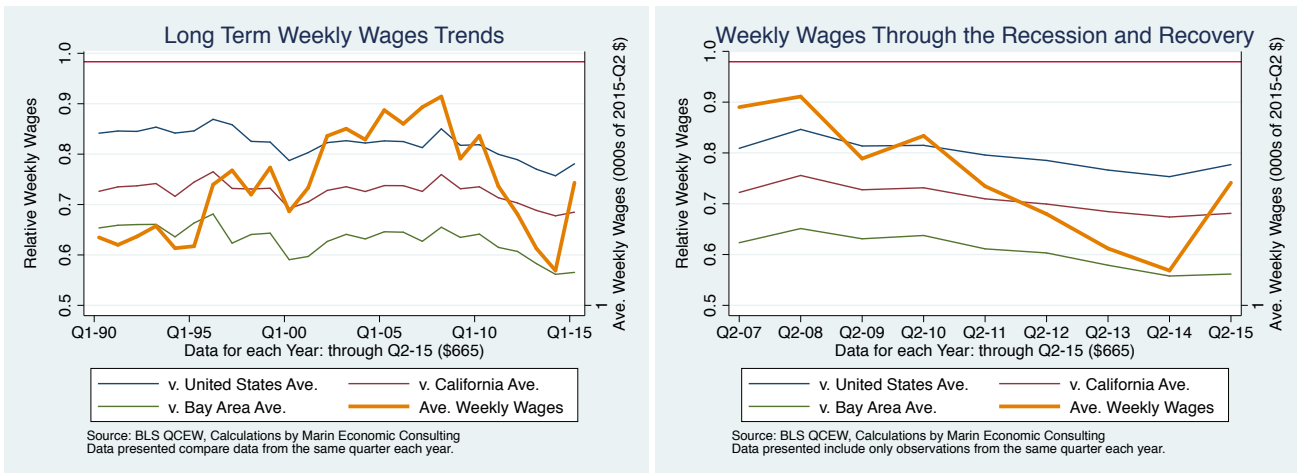




Figure 4 - 9: 1021: Trade, transportation, and utilities

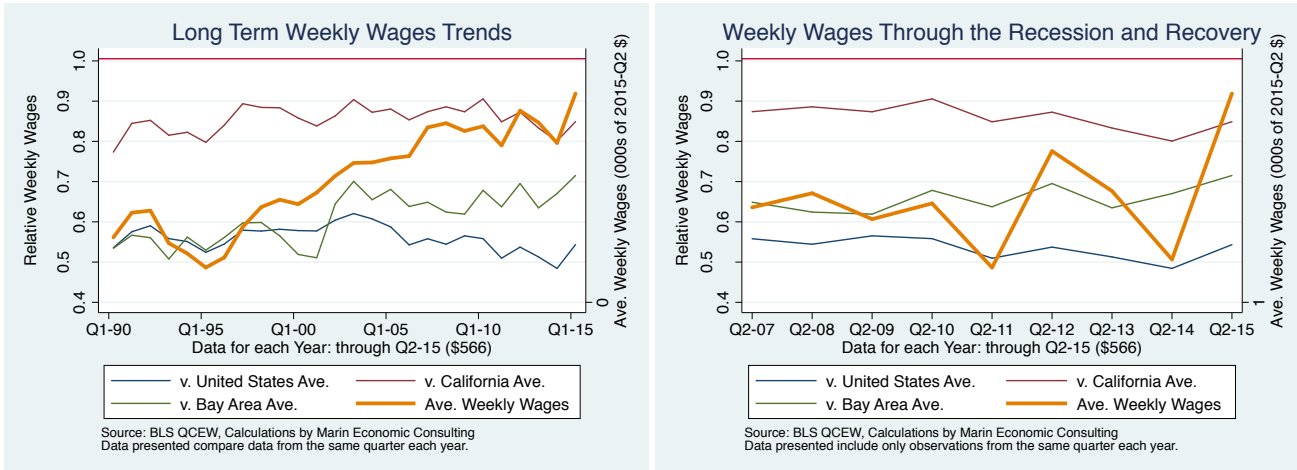


Figure 4 - 10: 1011: Natural resources and mining

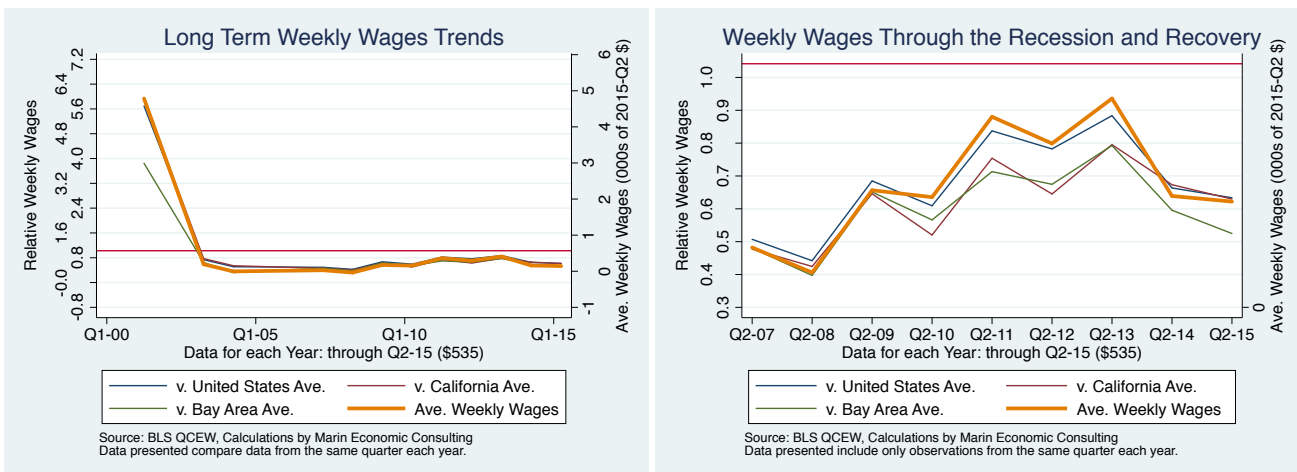


Figure 4 - 11: 1029: Unclassified

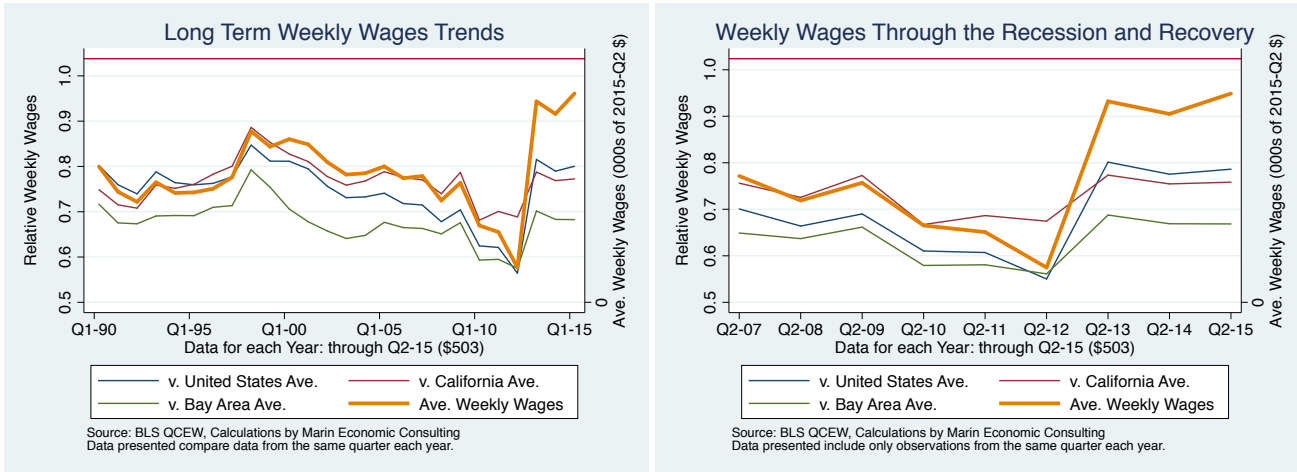


Figure 4 - 12: 1027: Other services

