

# Orange County Weekly Wages

Focus on Post-Recession Recovery

Q 3 – 2015 Update

*Produced by:*

**Marin Economic Consulting**

March 16, 2016

Jon Haveman, Principal

415-336-5705 or [Jon@MarinEconomicConsulting.com](mailto:Jon@MarinEconomicConsulting.com)

## **Contents**

1. Descriptions and References	2
2. Overview of Wage Changes Since the Onset of the Great Recession	3
3. Weekly Wages Over Time	4
4. Graphical Display of Weekly Wage Evolution by Industry (Super Sector)	5

# 1. Descriptions and References

The contents of this report illustrate the evolution of Orange County wage patterns over time. This report presents:

**Wages:** Average weekly wages for the industry in the region. They are inflation adjusted to current dollars using: Consumer Price Index for All Urban Consumers: All Items, from the FRED Database maintained by the St. Louis Federal Reserve Bank.

The data underlying this report are from the Bureau of Labor Statistics: Quarterly Census of Employment and Wages (QCEW). These data are available on a quarterly basis, generally with a 5 month lag from the end of the quarter to the release of the data.

**QCEW:** The Quarterly Census of Employment and Wages (QCEW) program publishes a quarterly count of employment and wages reported by employers covering 98 percent of U.S. jobs, available at the county, MSA, state and national levels by industry. <http://www.bls.gov/cew/home.htm>

**Time Period:** The data extend from Q1-1990 through Q 3 - 2015

**Seasonality:** There is a significant seasonal component to many industries. The QCEW data are not seasonally adjusted. Rather than seasonally adjusting the data, most comparisons in this report are between the same quarter in different years. The data presented are therefore the actual employment levels and wages (inflation adjusted) compared across years.

A particular focus of this report is on the post-Great Recession recovery. This is accomplished by comparing the most recent quarter of data to the same quarter in 2007, the last non-recessionary year for most of California and the United States.

Notes:

**Notes:** There are occasions where the data displayed seem to reflect implausible increases in either employment or wages. These changes are as reported in the QCEW data. For a closer look at these changes, please contact: [Jon@MarinEconomicConsulting.com](mailto:Jon@MarinEconomicConsulting.com)

## 2. Overview of Wage Changes Since the Onset of the Great Recession

Figure 2 - 1

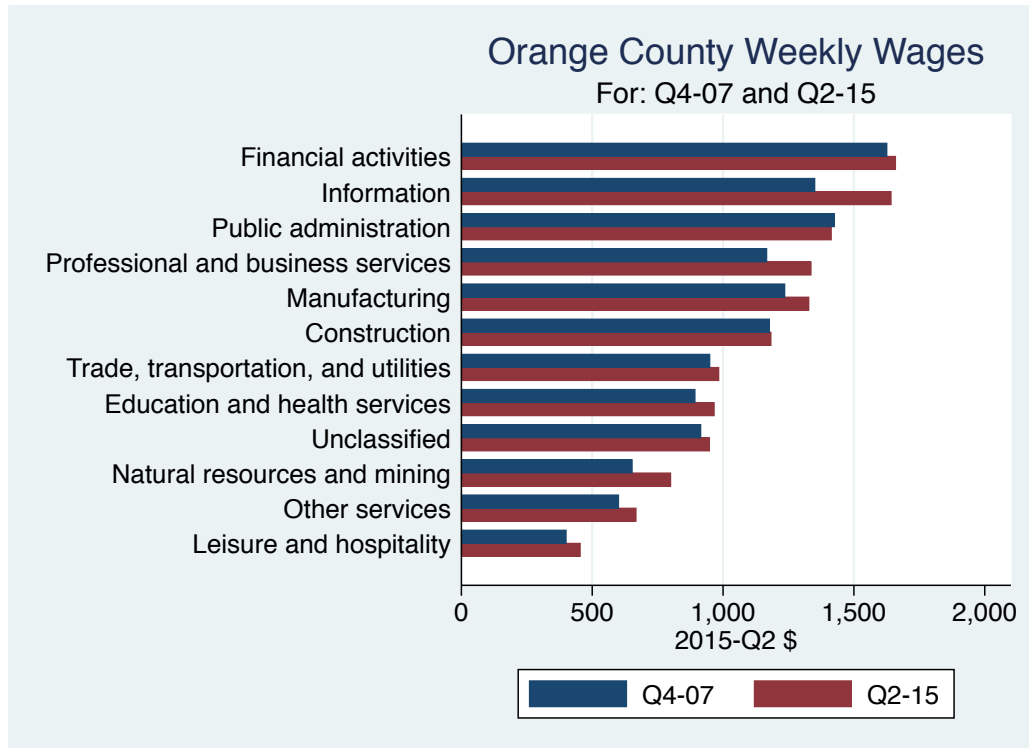


Table 2.1: Quarterly Summary for Q 3 – 2015

Sector	Levels in Q 3 – 2015		Change vs Q 3 in 2007					
	Employment	Wages	Relative to:		Employment	Wages	Relative to:	
			Bay	U.S.			Bay	U.S.
Financial activities	117,309	1,666.4	0.8	1.2	-7,803	292.24	-0.03	0.01
Information	25,896	1,632.2	0.4	0.9	-4,831	381.65	-0.17	-0.06
Public administration	41,354	1,541.8	0.9	1.3	-915	290.76	0.02	0.03
Manufacturing	155,824	1,321.0	0.5	1.1	-20,597	220.00	-0.02	0.01
Professional and business services	283,908	1,283.8	0.6	1.0	10,629	282.54	-0.04	0.03
Construction	92,187	1,219.4	0.9	1.1	-13,802	192.50	-0.04	-0.04
All industries	1,514,005	1,077.0	0.7	1.1	14,351	153.00	-0.08	-0.02
Trade, transportation, and utilities	266,686	961.1	0.8	1.1	-27,397	83.08	-0.08	-0.08
Education and health services	265,029	952.8	0.8	1.0	46,267	114.23	-0.01	-0.04
Natural resources and mining	3,034	831.0	1.0	0.8	-2,178	210.00	0.14	0.05
Unclassified	10,067	772.0	0.7	0.9	10,038	-331.00	-0.68	-0.52
Other services	44,758	676.9	0.9	1.0	-2,979	107.88	-0.13	-0.05
Leisure and hospitality	207,314	468.3	0.8	1.1	28,304	58.44	-0.06	-0.04
<b>Total</b>	<b>3,027,372</b>							

Source: BLS, QCEW; Calculations by Marin Economic Consulting

### 3. Weekly Wages Over Time

**Table3.1: Summary of Weekly Wages versus the Bay Area as A Whole**

Sector	Q 3 – 2015		Relative Wages: Q 3 of Each Year					
	Employment	Wages	1990	1995	2001	2004	2007	2015
Financial activities	117,309	1,666.4	0.94	0.95	0.87	0.94	0.79	0.75
Information	25,896	1,632.2	0.82	0.79	0.66	0.65	0.56	0.39
Public administration	41,354	1,541.8	1.02	0.91	0.97	0.99	0.90	0.92
Manufacturing	155,824	1,321.0	0.80	0.69	0.61	0.62	0.55	0.53
Professional and business services	283,908	1,283.8	0.84	0.74	0.65	0.65	0.65	0.61
Construction	92,187	1,219.4	0.93	0.91	0.81	0.89	0.90	0.86
All industries	1,514,005	1,077.0	0.89	0.84	0.76	0.80	0.75	0.67
Trade, transportation, and utilities	266,686	961.1	0.91	0.94	0.91	0.93	0.92	0.84
Education and health services	265,029	952.8	1.05	0.97	0.83	0.85	0.84	0.83
Natural resources and mining	3,034	831.0	0.84	0.92	0.75	0.91	0.89	1.02
Unclassified	10,067	772.0			0.76	1.04	1.37	0.69
Other services	44,758	676.9	0.97	0.95	0.89	0.94	0.99	0.86
Leisure and hospitality	207,314	468.3	0.95	0.88	0.88	0.90	0.91	0.84

Source: BLS, QCEW; Calculations by Marin Economic Consulting

**Table3.2: Summary of Weekly Wages versus California as A Whole**

Sector	Q 3 – 2015		Relative Wages: Q 3 of Each Year					
	Employment	Wages	1990	1995	2001	2004	2007	2015
Financial activities	117,309	1,666.4	1.02	1.09	1.07	1.14	1.01	1.00
Information	25,896	1,632.2	0.83	0.88	0.83	0.85	0.79	0.63
Public administration	41,354	1,541.8	1.07	0.96	1.08	1.08	1.01	1.03
Manufacturing	155,824	1,321.0	1.00	0.95	0.88	0.94	0.90	0.86
Professional and business services	283,908	1,283.8	0.93	0.92	0.90	0.89	0.89	0.87
Construction	92,187	1,219.4	1.05	1.05	1.02	1.05	1.06	1.03
All industries	1,514,005	1,077.0	1.01	1.01	0.98	1.02	0.99	0.95
Trade, transportation, and utilities	266,686	961.1	1.01	1.05	1.07	1.07	1.09	1.03
Education and health services	265,029	952.8	1.06	1.04	0.94	0.98	0.96	0.98
Natural resources and mining	3,034	831.0	1.20	1.31	1.21	1.15	1.14	1.21
Unclassified	10,067	772.0			1.01	1.04	1.26	0.85
Other services	44,758	676.9	1.01	1.04	1.08	1.12	1.15	0.97
Leisure and hospitality	207,314	468.3	0.96	0.90	0.94	0.92	0.95	0.93

Source: BLS, QCEW; Calculations by Marin Economic Consulting

**Table3.3: Summary of Weekly Wages versus the United States as A Whole**

Sector	Q 3 – 2015		Relative Wages: Q 3 of Each Year					
	Employment	Wages	1990	1995	2001	2004	2007	2015
Financial activities	117,309	1,666.4	1.10	1.19	1.22	1.33	1.15	1.16
Information	25,896	1,632.2	0.96	0.99	1.05	1.09	1.01	0.95
Public administration	41,354	1,541.8	1.32	1.19	1.36	1.37	1.28	1.31
Manufacturing	155,824	1,321.0	1.12	1.08	1.04	1.10	1.11	1.13
Professional and business services	283,908	1,283.8	0.98	1.02	1.02	1.00	1.00	1.03
Construction	92,187	1,219.4	1.18	1.18	1.13	1.14	1.17	1.13
All industries	1,514,005	1,077.0	1.11	1.11	1.12	1.16	1.13	1.11
Trade, transportation, and utilities	266,686	961.1	1.15	1.19	1.21	1.20	1.22	1.14
Education and health services	265,029	952.8	1.14	1.11	1.03	1.08	1.08	1.04
Natural resources and mining	3,034	831.0	0.83	0.88	0.83	0.81	0.76	0.81
Unclassified	10,067	772.0			0.89	1.01	1.40	0.88
Other services	44,758	676.9	1.08	1.04	1.05	1.07	1.07	1.01
Leisure and hospitality	207,314	468.3	1.15	1.01	1.09	1.15	1.16	1.12

Source: BLS, QCEW; Calculations by Marin Economic Consulting

# 4. Graphical Display of Weekly Wage Evolution by Industry (Super Sector)

Graphs present only Q 3 data for each year.

Figure 4 - 1: 1023: Financial activities

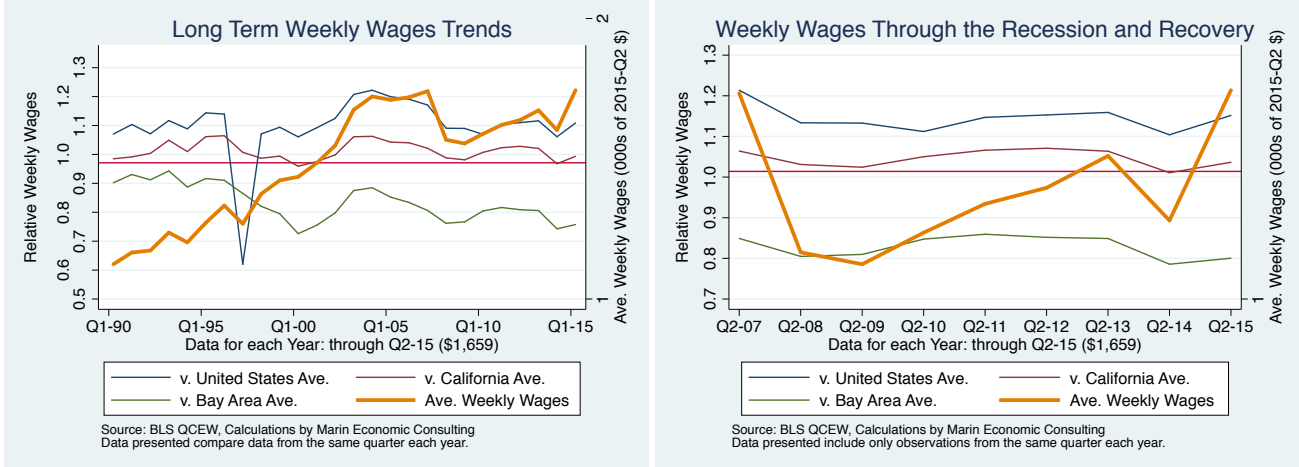


Figure 4 - 2: 1022: Information

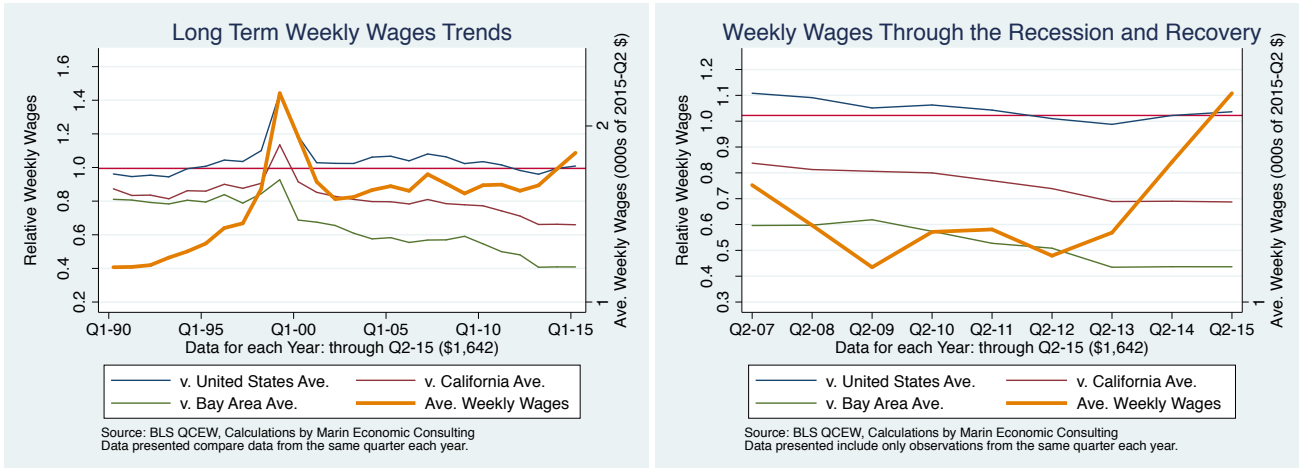


Figure 4 - 3: 1028: Public administration

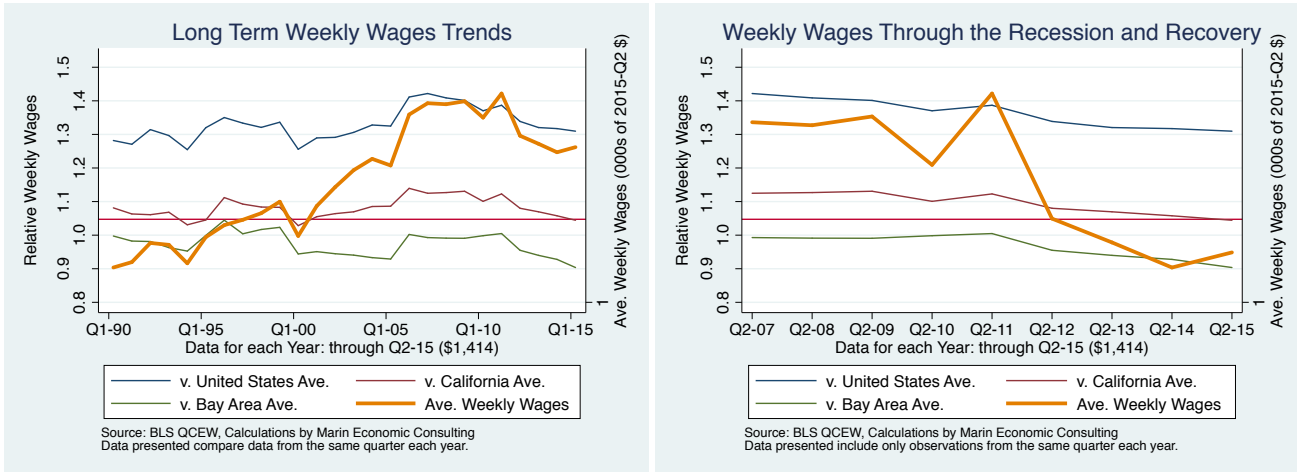


Figure 4 - 4: 1013: Manufacturing

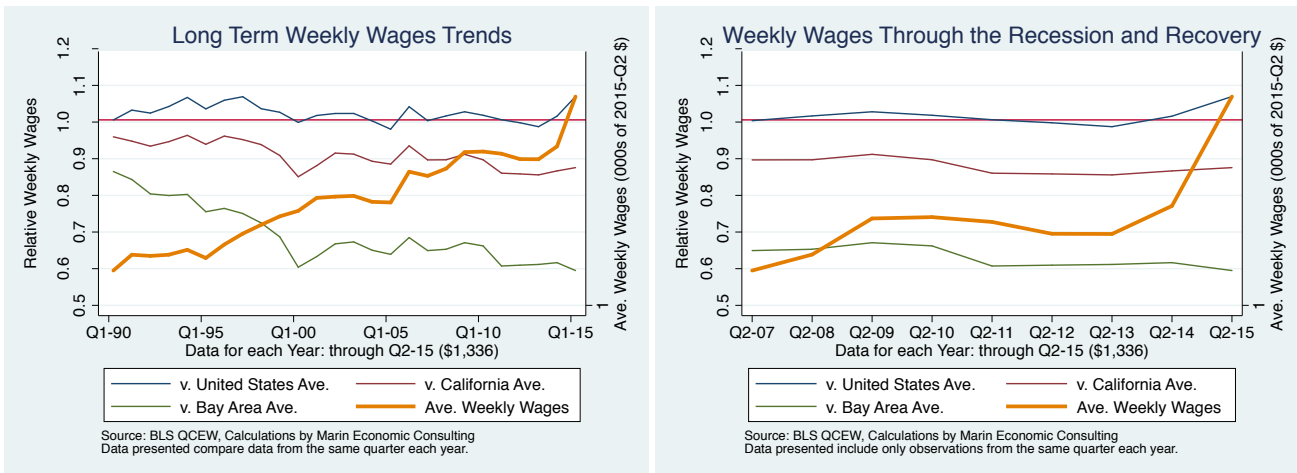


Figure 4 - 5: 1024: Professional and business services

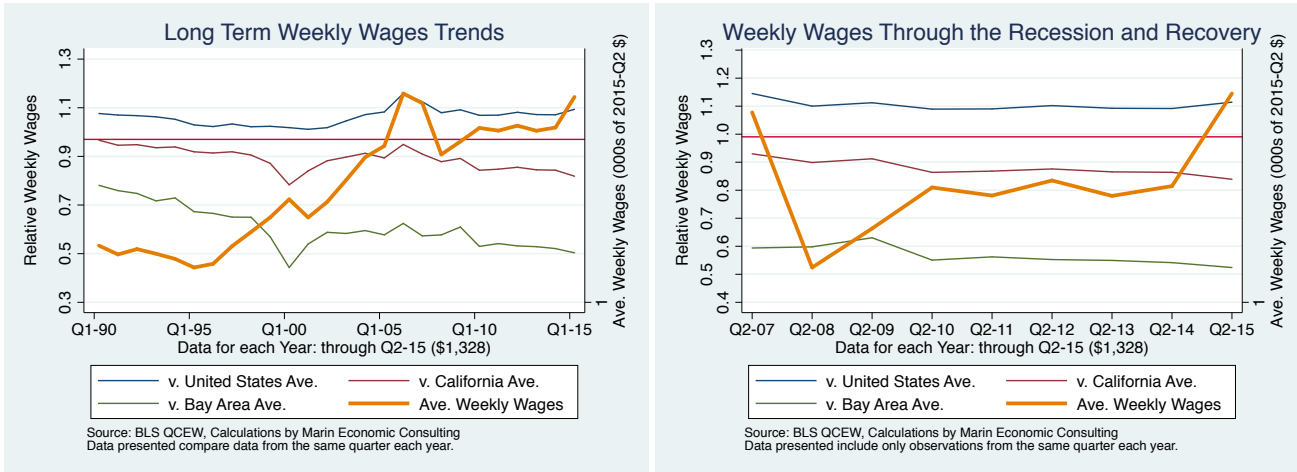


Figure 4 - 6: 1012: Construction

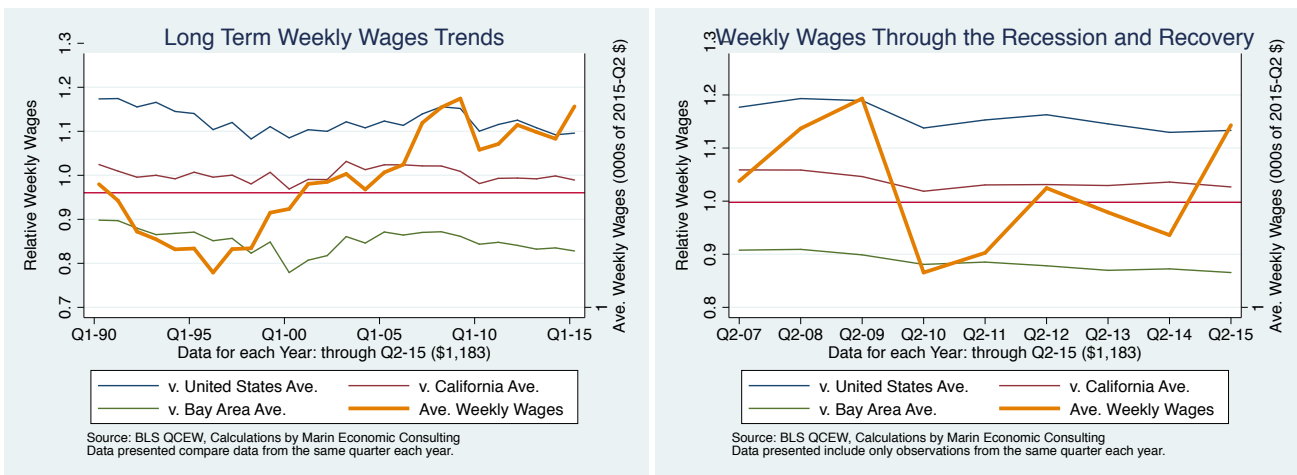


Figure 4 - 7: 10: All industries

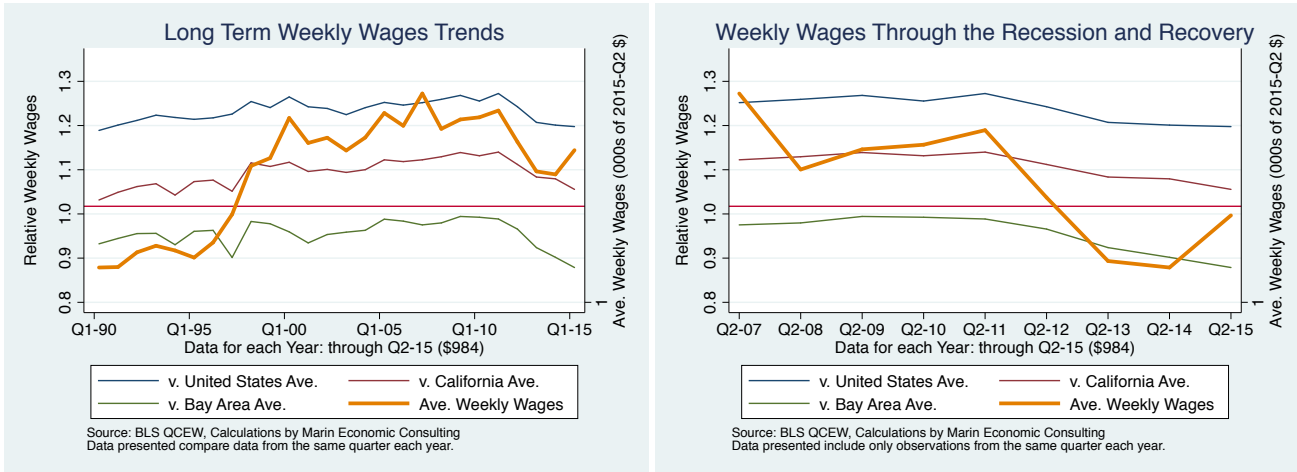


Figure 4 - 8: 1021: Trade, transportation, and utilities

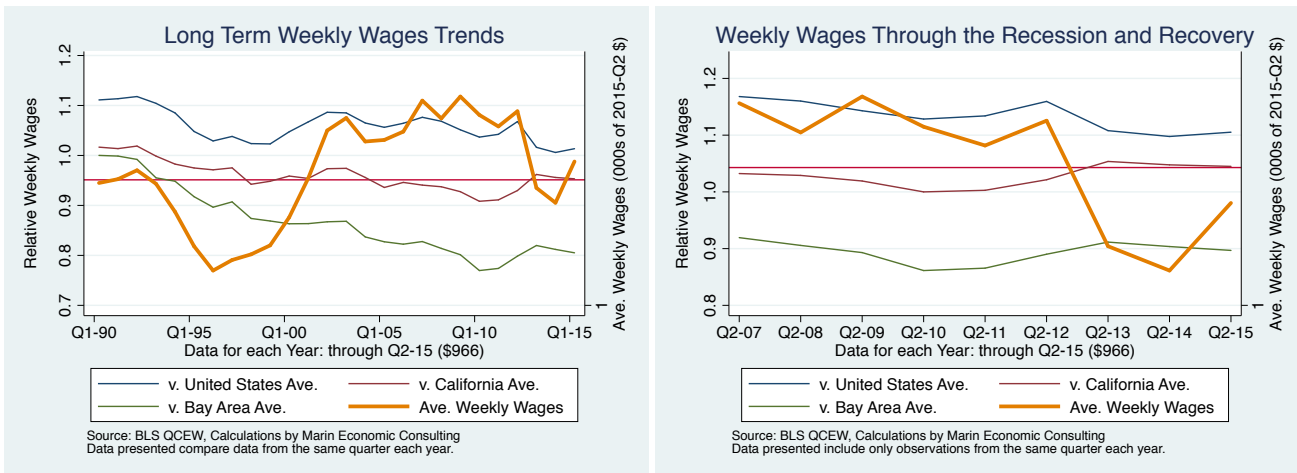




Figure 4 - 9: 1025: Education and health services

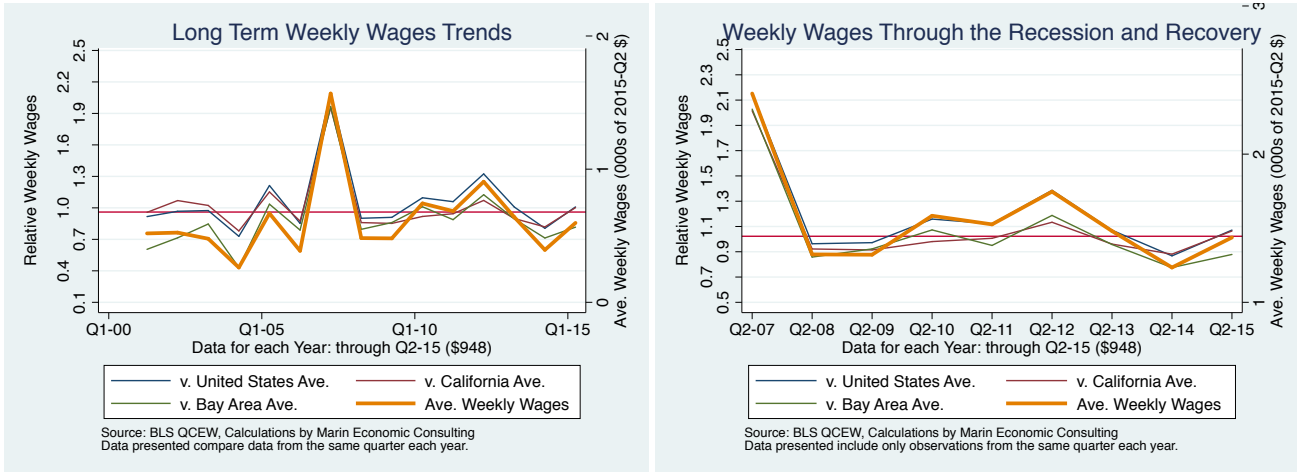


Figure 4 - 10: 1011: Natural resources and mining

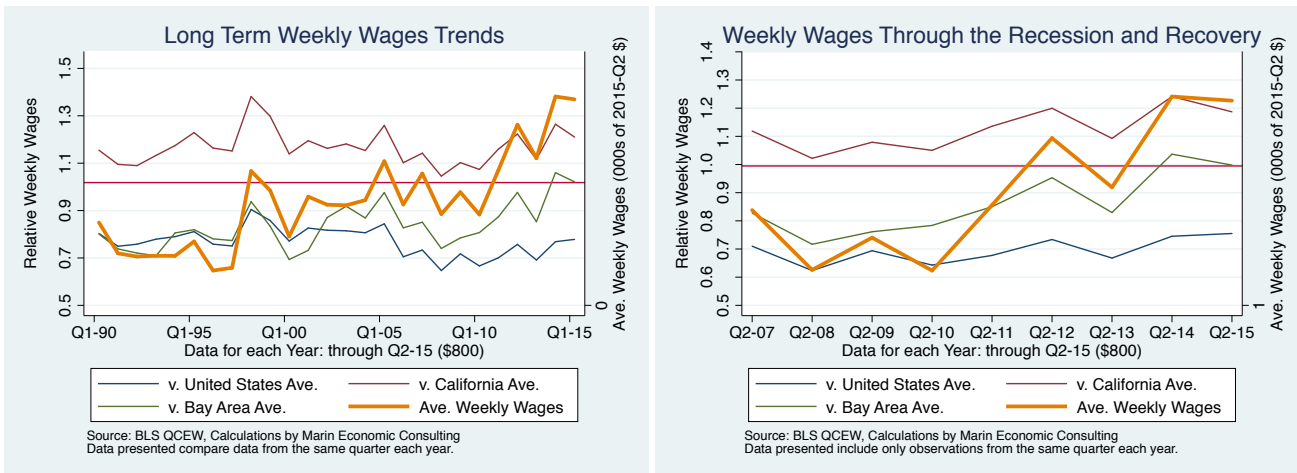


Figure 4 - 11: 1029: Unclassified

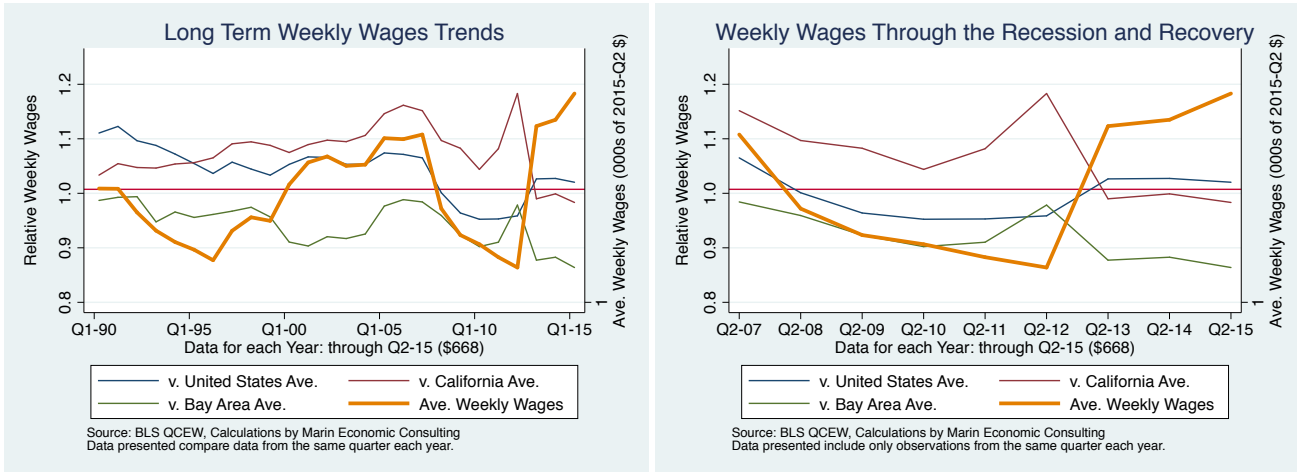


Figure 4 - 12: 1027: Other services

