

Plumas County Weekly Wages

Focus on Post-Recession Recovery

Q 3 – 2015 Update

Produced by:

Marin Economic Consulting

March 16, 2016

Jon Haveman, Principal

415-336-5705 or Jon@MarinEconomicConsulting.com

Contents

1. Descriptions and References	2
2. Overview of Wage Changes Since the Onset of the Great Recession	3
3. Weekly Wages Over Time	4
4. Graphical Display of Weekly Wage Evolution by Industry (Super Sector)	5

1. Descriptions and References

The contents of this report illustrate the evolution of Plumas County wage patterns over time. This report presents:

Wages: Average weekly wages for the industry in the region. They are inflation adjusted to current dollars using: Consumer Price Index for All Urban Consumers: All Items, from the FRED Database maintained by the St. Louis Federal Reserve Bank.

The data underlying this report are from the Bureau of Labor Statistics: Quarterly Census of Employment and Wages (QCEW). These data are available on a quarterly basis, generally with a 5 month lag from the end of the quarter to the release of the data.

QCEW: The Quarterly Census of Employment and Wages (QCEW) program publishes a quarterly count of employment and wages reported by employers covering 98 percent of U.S. jobs, available at the county, MSA, state and national levels by industry. <http://www.bls.gov/cew/home.htm>

Time Period: The data extend from Q1-1990 through Q 3 - 2015

Seasonality: There is a significant seasonal component to many industries. The QCEW data are not seasonally adjusted. Rather than seasonally adjusting the data, most comparisons in this report are between the same quarter in different years. The data presented are therefore the actual employment levels and wages (inflation adjusted) compared across years.

A particular focus of this report is on the post-Great Recession recovery. This is accomplished by comparing the most recent quarter of data to the same quarter in 2007, the last non-recessionary year for most of California and the United States.

Notes:

Notes: There are occasions where the data displayed seem to reflect implausible increases in either employment or wages. These changes are as reported in the QCEW data. For a closer look at these changes, please contact: Jon@MarinEconomicConsulting.com

2. Overview of Wage Changes Since the Onset of the Great Recession

Figure 2 - 1

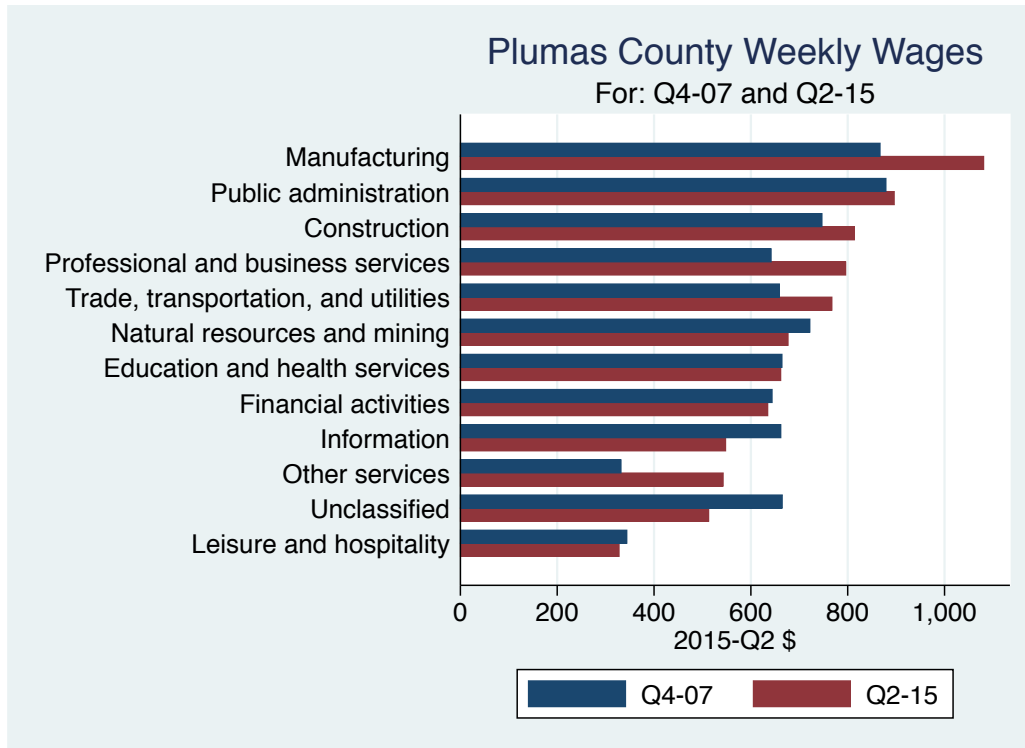


Table 2.1: Quarterly Summary for Q 3 – 2015

Sector	Levels in Q 3 – 2015		Relative to:		Change vs Q 3 in 2007			
	Employment	Wages	Bay	U.S.	Employment	Wages	Relative to: Bay	Relative to: U.S.
Public administration	1,078	1,121.5	0.7	1.0	28	200.71	0.01	0.01
Manufacturing	460	1,098.0	0.4	0.9	-198	273.00	0.03	0.10
Construction	362	876.0	0.6	0.8	-439	166.00	-0.00	-0.00
Natural resources and mining	70	864.0	1.1	0.8	-113	200.00	0.12	0.03
Trade, transportation, and utilities	1,001	827.2	0.7	1.0	-185	235.19	0.10	0.16
Professional and business services	343	788.0	0.4	0.6	-37	135.00	-0.05	-0.02
All industries	6,548	758.0	0.5	0.8	-1,094	118.00	-0.05	-0.00
Information	53	673.0	0.2	0.4	-30	102.00	-0.09	-0.07
Education and health services	1,677	652.7	0.6	0.7	298	-46.03	-0.13	-0.18
Financial activities	183	635.0	0.3	0.4	-73	8.00	-0.07	-0.08
Other services	172	535.3	0.7	0.8	-96	215.71	0.12	0.20
Leisure and hospitality	1,107	376.0	0.7	0.9	-177	61.00	-0.02	0.01
Unclassified	33	358.0	0.3	0.4				
Total	13,086							

Source: BLS, QCEW; Calculations by Marin Economic Consulting

3. Weekly Wages Over Time

Table3.1: Summary of Weekly Wages versus the Bay Area as A Whole

Sector	Q 3 – 2015		Relative Wages: Q 3 of Each Year					
	Employment	Wages	1990	1995	2001	2004	2007	2015
Public administration	1,078	1,121.5	0.74	0.65	0.58	0.68	0.66	0.67
Manufacturing	460	1,098.0	0.75	0.65	0.56	0.50	0.41	0.44
Construction	362	876.0	0.59	0.57	0.54	0.72	0.62	0.62
Natural resources and mining	70	864.0	1.18	1.17	0.98	1.14	0.95	1.06
Trade, transportation, and utilities	1,001	827.2	0.68	0.67	0.64	0.64	0.62	0.72
Professional and business services	343	788.0	0.45	0.42	0.39	0.48	0.42	0.37
All industries	6,548	758.0	0.68	0.59	0.51	0.55	0.52	0.47
Information	53	673.0		0.33	0.29	0.30	0.25	0.16
Education and health services	1,677	652.7	0.79	0.69	0.67	0.65	0.70	0.57
Financial activities	183	635.0	0.48	0.39	0.38	0.38	0.36	0.29
Other services	172	535.3	0.56	0.56	0.53	0.57	0.56	0.68
Leisure and hospitality	1,107	376.0	0.69	0.76	0.63	0.65	0.70	0.68
Unclassified	33	358.0			0.28			0.32

Source: BLS, QCEW; Calculations by Marin Economic Consulting

Table3.2: Summary of Weekly Wages versus California as A Whole

Sector	Q 3 – 2015		Relative Wages: Q 3 of Each Year					
	Employment	Wages	1990	1995	2001	2004	2007	2015
Public administration	1,078	1,121.5	0.78	0.69	0.65	0.74	0.74	0.75
Manufacturing	460	1,098.0	0.93	0.90	0.82	0.75	0.67	0.72
Construction	362	876.0	0.67	0.66	0.68	0.86	0.73	0.74
Natural resources and mining	70	864.0	1.69	1.65	1.59	1.43	1.22	1.26
Trade, transportation, and utilities	1,001	827.2	0.75	0.75	0.75	0.74	0.73	0.89
Professional and business services	343	788.0	0.50	0.52	0.54	0.65	0.58	0.53
All industries	6,548	758.0	0.76	0.71	0.66	0.70	0.69	0.67
Information	53	673.0		0.37	0.36	0.39	0.36	0.26
Education and health services	1,677	652.7	0.81	0.74	0.75	0.74	0.80	0.67
Financial activities	183	635.0	0.52	0.45	0.46	0.46	0.46	0.38
Other services	172	535.3	0.59	0.62	0.65	0.68	0.64	0.77
Leisure and hospitality	1,107	376.0	0.69	0.78	0.67	0.66	0.73	0.75
Unclassified	33	358.0			0.38			0.40

Source: BLS, QCEW; Calculations by Marin Economic Consulting

Table3.3: Summary of Weekly Wages versus the United States as A Whole

Sector	Q 3 – 2015		Relative Wages: Q 3 of Each Year					
	Employment	Wages	1990	1995	2001	2004	2007	2015
Public administration	1,078	1,121.5	0.96	0.86	0.82	0.94	0.94	0.95
Manufacturing	460	1,098.0	1.05	1.02	0.97	0.88	0.83	0.94
Construction	362	876.0	0.76	0.75	0.76	0.93	0.81	0.81
Natural resources and mining	70	864.0	1.17	1.11	1.08	1.01	0.81	0.84
Trade, transportation, and utilities	1,001	827.2	0.86	0.85	0.84	0.83	0.82	0.99
Professional and business services	343	788.0	0.53	0.57	0.62	0.73	0.65	0.64
All industries	6,548	758.0	0.84	0.78	0.75	0.79	0.78	0.78
Information	53	673.0		0.41	0.46	0.51	0.46	0.39
Education and health services	1,677	652.7	0.87	0.78	0.82	0.82	0.90	0.72
Financial activities	183	635.0	0.56	0.49	0.53	0.54	0.52	0.44
Other services	172	535.3	0.63	0.62	0.63	0.65	0.60	0.80
Leisure and hospitality	1,107	376.0	0.83	0.87	0.78	0.83	0.89	0.90
Unclassified	33	358.0			0.33			0.41

Source: BLS, QCEW; Calculations by Marin Economic Consulting

4. Graphical Display of Weekly Wage Evolution by Industry (Super Sector)

Graphs present only Q 3 data for each year.

Figure 4 - 1: 1028: Public administration

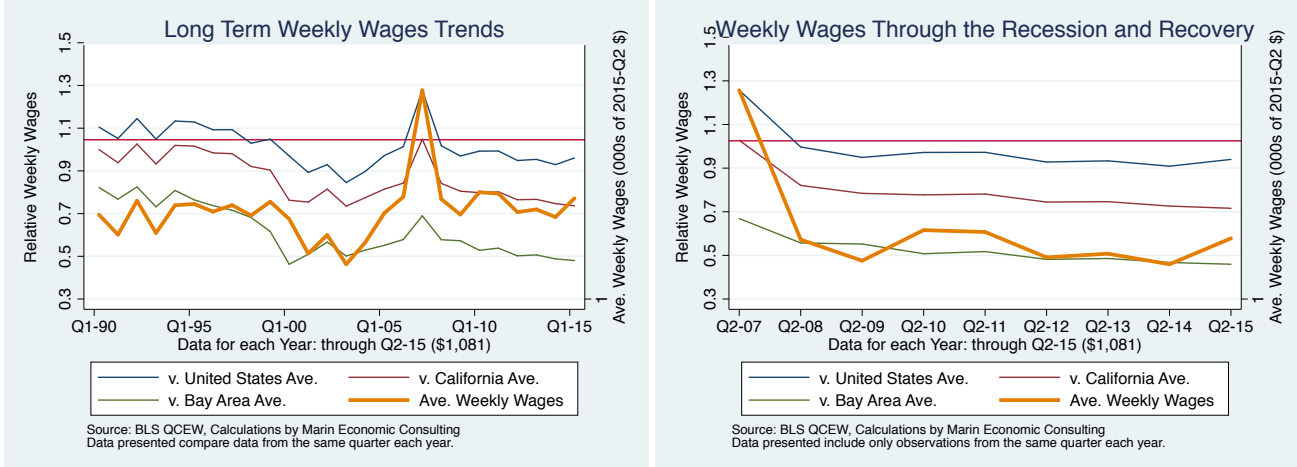


Figure 4 - 2: 1013: Manufacturing

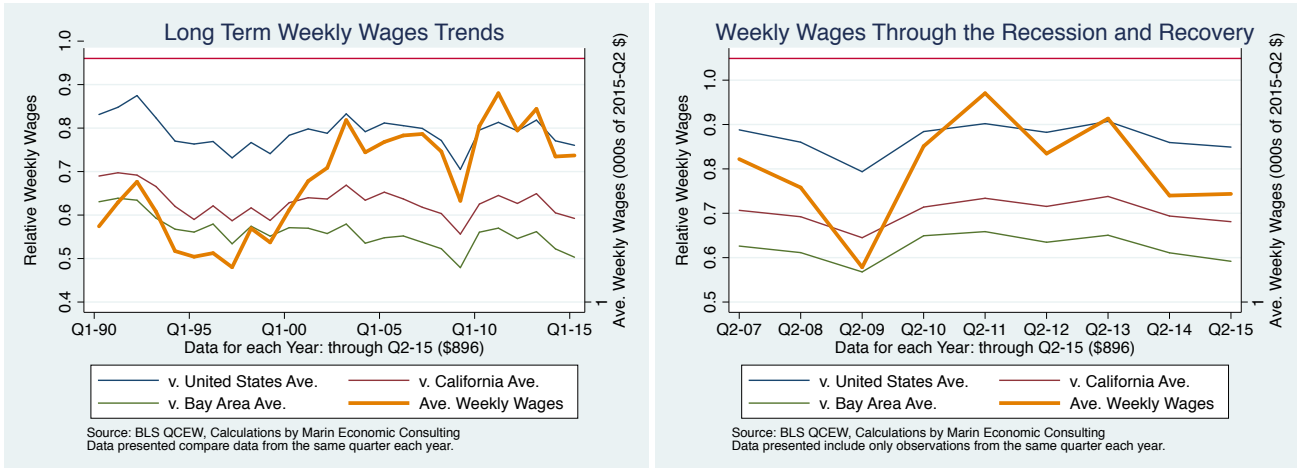


Figure 4 - 3: 1012: Construction

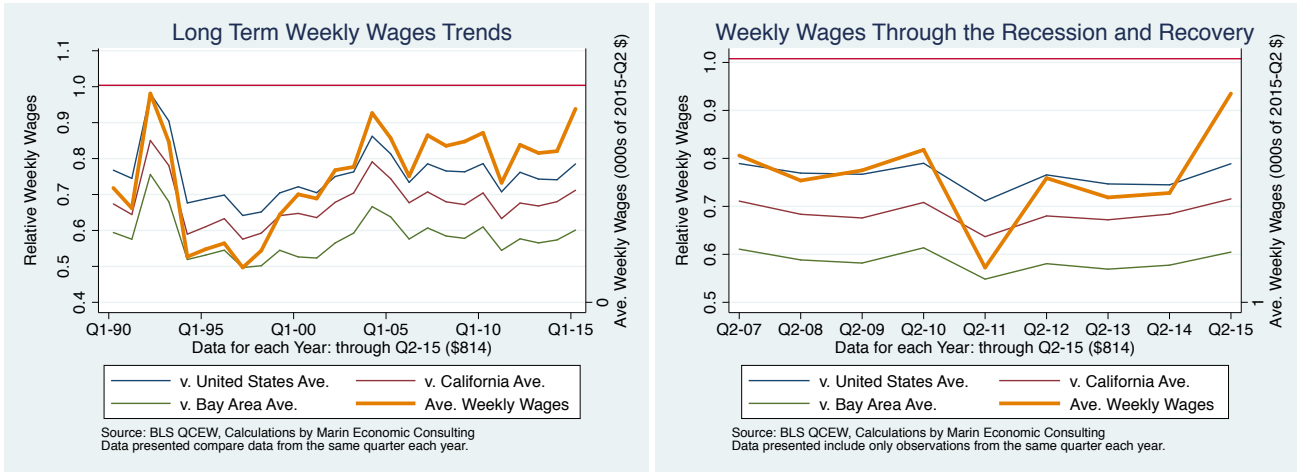


Figure 4 - 4: 1011: Natural resources and mining

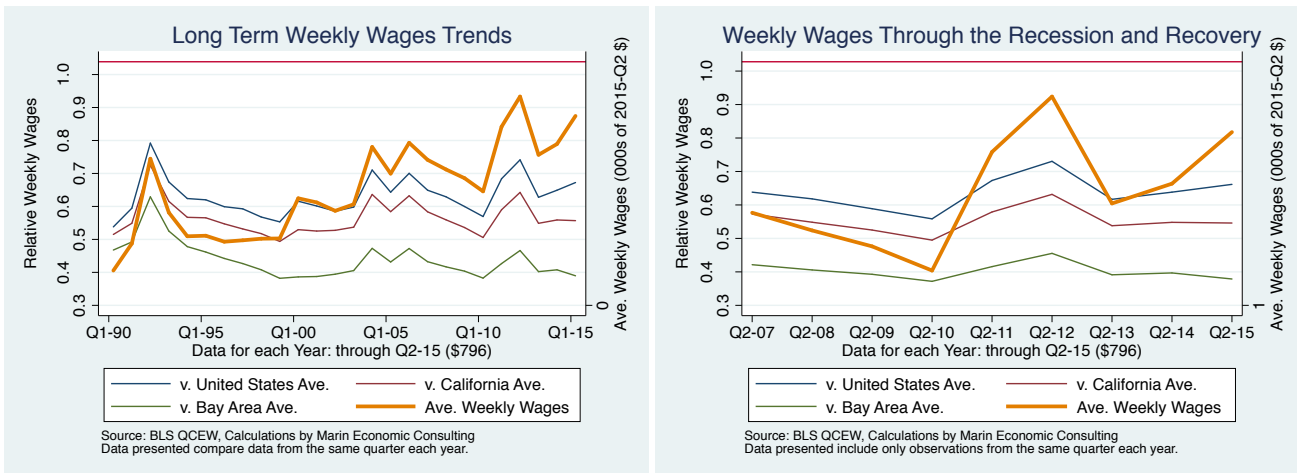


Figure 4 - 5: 1021: Trade, transportation, and utilities

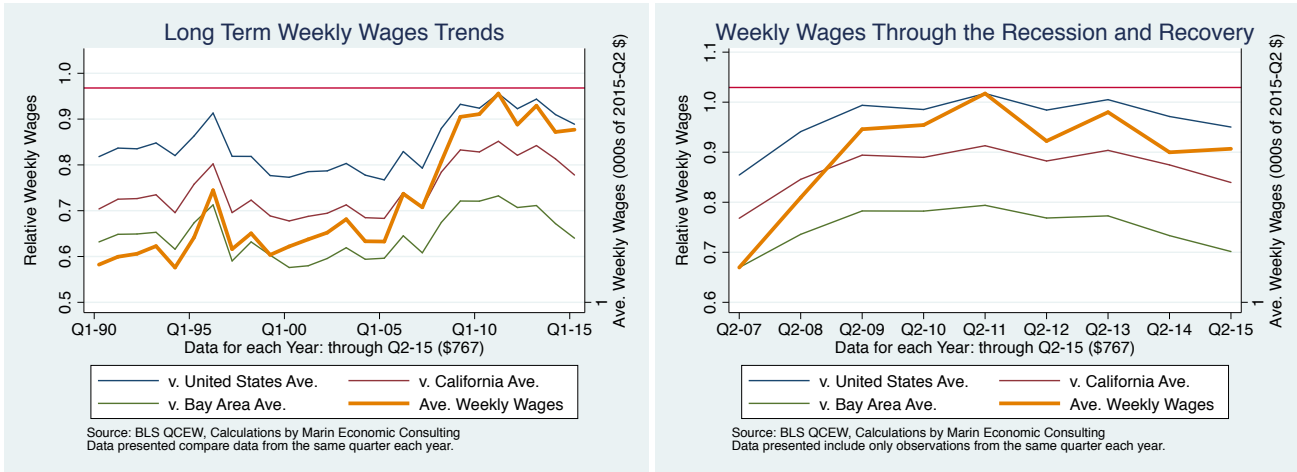


Figure 4 - 6: 1024: Professional and business services

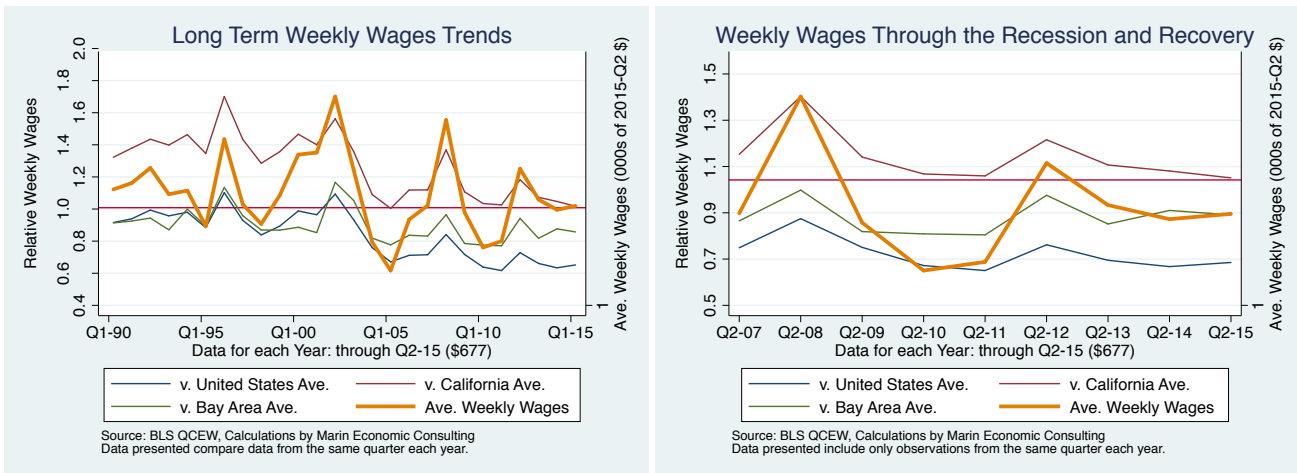


Figure 4 - 7: 10: All industries

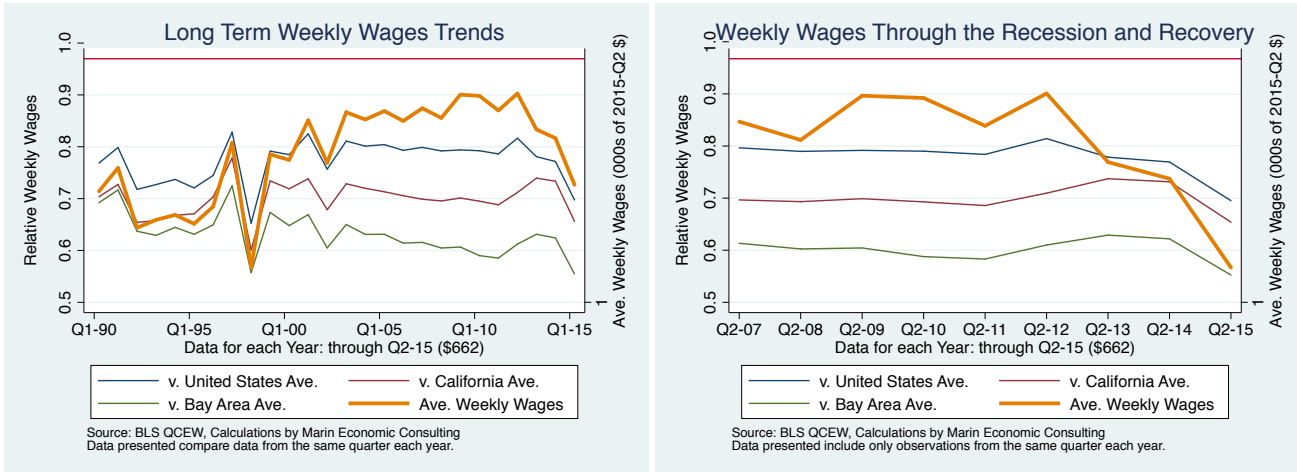


Figure 4 - 8: 1022: Information

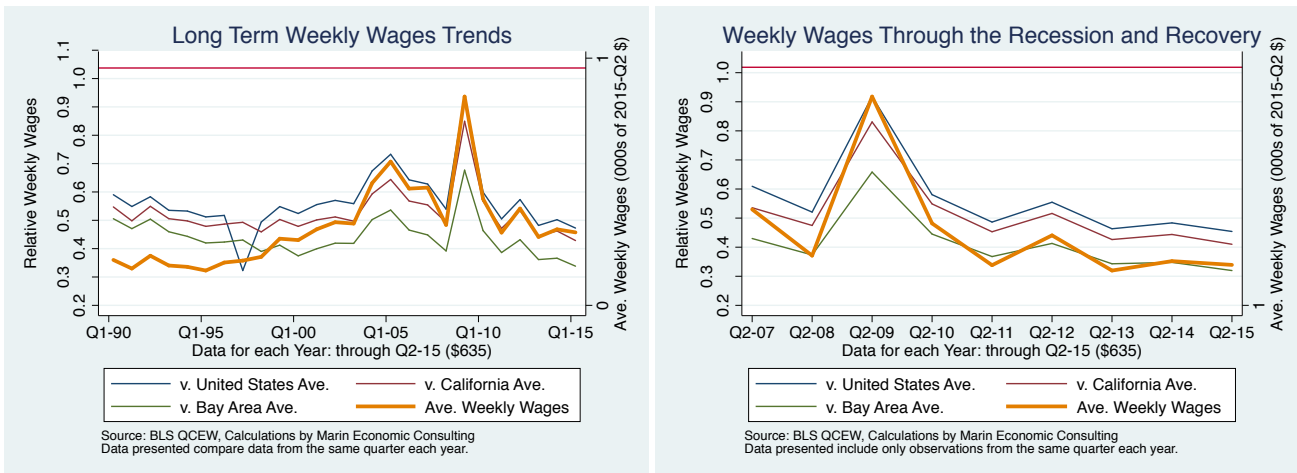


Figure 4 - 9: 1025: Education and health services

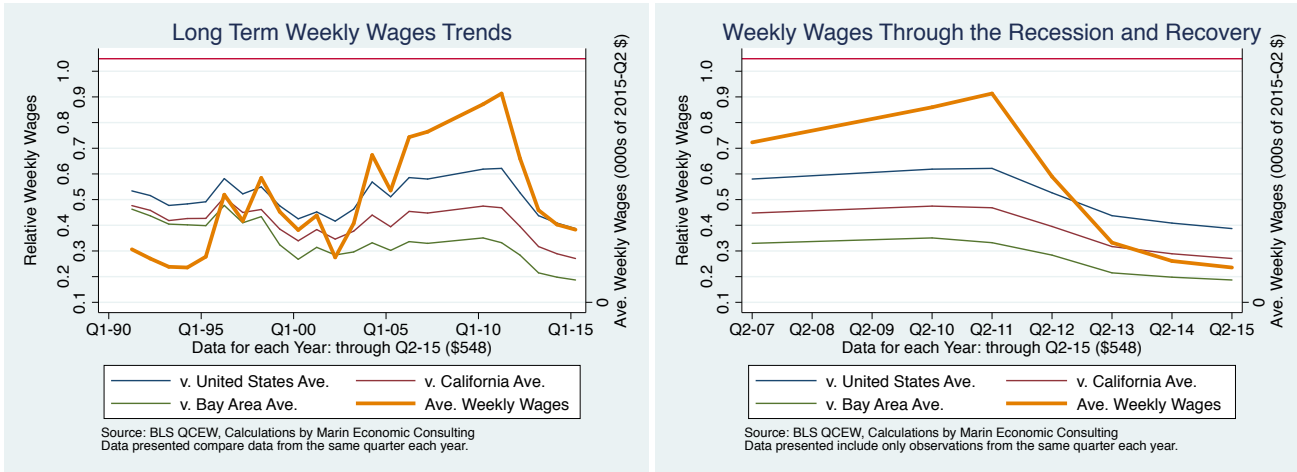


Figure 4 - 10: 1023: Financial activities

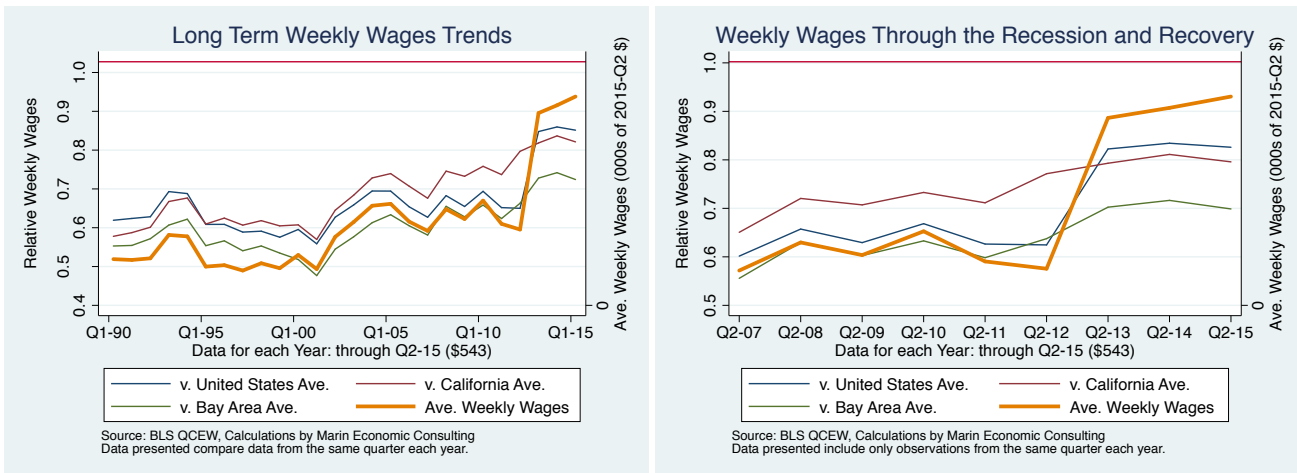


Figure 4 - 11: 1027: Other services

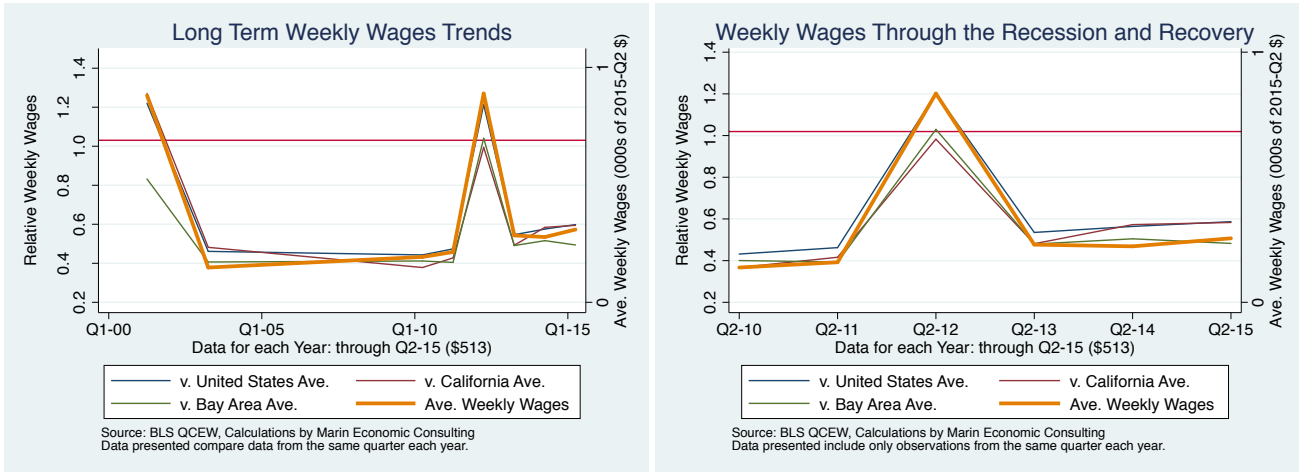


Figure 4 - 12: 1026: Leisure and hospitality

