

Riverside County Weekly Wages

Focus on Post-Recession Recovery

Q 3 – 2015 Update

Produced by:

Marin Economic Consulting

March 16, 2016

Jon Haveman, Principal

415-336-5705 or Jon@MarinEconomicConsulting.com

Contents

1. Descriptions and References	2
2. Overview of Wage Changes Since the Onset of the Great Recession	3
3. Weekly Wages Over Time	4
4. Graphical Display of Weekly Wage Evolution by Industry (Super Sector)	5

1. Descriptions and References

The contents of this report illustrate the evolution of Riverside County wage patterns over time. This report presents:

Wages: Average weekly wages for the industry in the region. They are inflation adjusted to current dollars using: Consumer Price Index for All Urban Consumers: All Items, from the FRED Database maintained by the St. Louis Federal Reserve Bank.

The data underlying this report are from the Bureau of Labor Statistics: Quarterly Census of Employment and Wages (QCEW). These data are available on a quarterly basis, generally with a 5 month lag from the end of the quarter to the release of the data.

QCEW: The Quarterly Census of Employment and Wages (QCEW) program publishes a quarterly count of employment and wages reported by employers covering 98 percent of U.S. jobs, available at the county, MSA, state and national levels by industry. <http://www.bls.gov/cew/home.htm>

Time Period: The data extend from Q1-1990 through Q3 - 2015

Seasonality: There is a significant seasonal component to many industries. The QCEW data are not seasonally adjusted. Rather than seasonally adjusting the data, most comparisons in this report are between the same quarter in different years. The data presented are therefore the actual employment levels and wages (inflation adjusted) compared across years.

A particular focus of this report is on the post-Great Recession recovery. This is accomplished by comparing the most recent quarter of data to the same quarter in 2007, the last non-recessionary year for most of California and the United States.

Notes:

Notes: There are occasions where the data displayed seem to reflect implausible increases in either employment or wages. These changes are as reported in the QCEW data. For a closer look at these changes, please contact: Jon@MarinEconomicConsulting.com

2. Overview of Wage Changes Since the Onset of the Great Recession

Figure 2 - 1

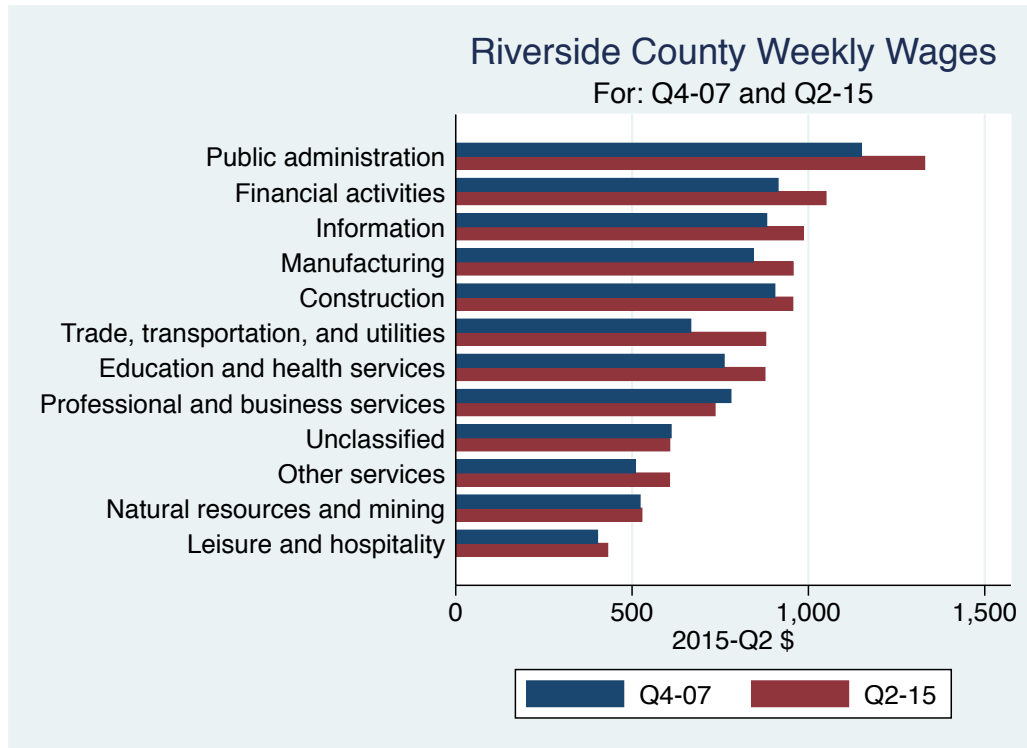


Table 2.1: Quarterly Summary for Q 3 – 2015

Sector	Levels in Q 3 – 2015		Relative to:		Change vs Q 3 in 2007		Relative to:	
	Employment	Wages	Bay	U.S.	Employment	Wages	Bay	U.S.
Public administration	38,144	1,390.1	0.8	1.2	8,101	175.14	-0.04	-0.06
Financial activities	20,881	1,024.2	0.5	0.7	-2,007	140.14	-0.04	-0.03
Information	6,470	980.3	0.2	0.6	-1,683	154.57	-0.13	-0.10
Construction	55,508	970.0	0.7	0.9	-15,542	142.00	-0.04	-0.05
Manufacturing	41,516	969.0	0.4	0.8	-12,021	181.00	-0.01	0.03
Education and health services	147,518	808.0	0.7	0.9	33,682	68.47	-0.04	-0.07
All industries	656,927	781.0	0.5	0.8	25,751	78.00	-0.08	-0.06
Professional and business services	62,370	736.9	0.3	0.6	-2,193	49.33	-0.09	-0.09
Trade, transportation, and utilities	151,382	714.9	0.6	0.9	18,700	48.87	-0.07	-0.07
Unclassified	3,758	677.0	0.6	0.8	3,726	166.00	-0.03	0.13
Other services	18,817	612.8	0.8	0.9	-5,923	128.32	-0.07	0.01
Natural resources and mining	11,337	573.0	0.7	0.6	-872	48.00	-0.04	-0.08
Leisure and hospitality	92,966	416.1	0.7	1.0	8,834	30.49	-0.10	-0.10
Total	1,307,595							

Source: BLS, QCEW; Calculations by Marin Economic Consulting

3. Weekly Wages Over Time

Table3.1: Summary of Weekly Wages versus the Bay Area as A Whole

Sector	Q 3 – 2015		Relative Wages: Q 3 of Each Year					
	Employment	Wages	1990	1995	2001	2004	2007	2015
Public administration	38,144	1,390.1	0.95	0.87	0.81	0.87	0.87	0.83
Financial activities	20,881	1,024.2	0.72	0.63	0.53	0.59	0.51	0.46
Information	6,470	980.3	0.75	0.57	0.43	0.42	0.37	0.23
Construction	55,508	970.0	0.74	0.72	0.64	0.70	0.72	0.69
Manufacturing	41,516	969.0	0.66	0.58	0.49	0.48	0.39	0.39
Education and health services	147,518	808.0	0.82	0.77	0.73	0.72	0.74	0.70
All industries	656,927	781.0	0.72	0.64	0.56	0.60	0.57	0.49
Professional and business services	62,370	736.9	0.69	0.51	0.40	0.45	0.44	0.35
Trade, transportation, and utilities	151,382	714.9	0.76	0.73	0.69	0.71	0.70	0.63
Unclassified	3,758	677.0			1.06	0.90	0.63	0.60
Other services	18,817	612.8	0.85	0.83	0.82	0.85	0.84	0.78
Natural resources and mining	11,337	573.0	0.66	0.69	0.56	0.79	0.75	0.71
Leisure and hospitality	92,966	416.1	0.90	0.81	0.82	0.88	0.85	0.75

Source: BLS, QCEW; Calculations by Marin Economic Consulting

Table3.2: Summary of Weekly Wages versus California as A Whole

Sector	Q 3 – 2015		Relative Wages: Q 3 of Each Year					
	Employment	Wages	1990	1995	2001	2004	2007	2015
Public administration	38,144	1,390.1	1.00	0.92	0.90	0.94	0.98	0.92
Financial activities	20,881	1,024.2	0.78	0.73	0.66	0.71	0.65	0.62
Information	6,470	980.3	0.75	0.63	0.53	0.55	0.52	0.38
Construction	55,508	970.0	0.84	0.83	0.81	0.83	0.85	0.82
Manufacturing	41,516	969.0	0.82	0.80	0.71	0.72	0.64	0.63
Education and health services	147,518	808.0	0.83	0.83	0.82	0.83	0.84	0.83
All industries	656,927	781.0	0.82	0.78	0.73	0.77	0.75	0.69
Professional and business services	62,370	736.9	0.76	0.63	0.55	0.61	0.61	0.50
Trade, transportation, and utilities	151,382	714.9	0.84	0.81	0.81	0.82	0.83	0.77
Unclassified	3,758	677.0			1.40	0.90	0.58	0.75
Other services	18,817	612.8	0.88	0.91	1.00	1.02	0.98	0.88
Natural resources and mining	11,337	573.0	0.94	0.98	0.91	1.00	0.96	0.83
Leisure and hospitality	92,966	416.1	0.91	0.83	0.88	0.90	0.90	0.83

Source: BLS, QCEW; Calculations by Marin Economic Consulting

Table3.3: Summary of Weekly Wages versus the United States as A Whole

Sector	Q 3 – 2015		Relative Wages: Q 3 of Each Year					
	Employment	Wages	1990	1995	2001	2004	2007	2015
Public administration	38,144	1,390.1	1.23	1.14	1.14	1.20	1.25	1.18
Financial activities	20,881	1,024.2	0.84	0.79	0.75	0.83	0.74	0.71
Information	6,470	980.3	0.87	0.71	0.67	0.71	0.67	0.57
Construction	55,508	970.0	0.94	0.93	0.90	0.90	0.95	0.90
Manufacturing	41,516	969.0	0.92	0.91	0.84	0.85	0.80	0.83
Education and health services	147,518	808.0	0.90	0.88	0.89	0.92	0.95	0.89
All industries	656,927	781.0	0.90	0.85	0.83	0.87	0.86	0.80
Professional and business services	62,370	736.9	0.80	0.70	0.63	0.68	0.69	0.59
Trade, transportation, and utilities	151,382	714.9	0.96	0.92	0.91	0.92	0.93	0.85
Unclassified	3,758	677.0			1.24	0.87	0.65	0.78
Other services	18,817	612.8	0.94	0.92	0.98	0.97	0.91	0.92
Natural resources and mining	11,337	573.0	0.65	0.66	0.62	0.70	0.64	0.56
Leisure and hospitality	92,966	416.1	1.09	0.93	1.02	1.12	1.09	0.99

Source: BLS, QCEW; Calculations by Marin Economic Consulting

4. Graphical Display of Weekly Wage Evolution by Industry (Super Sector)

Graphs present only Q 3 data for each year.

Figure 4 - 1: 1028: Public administration

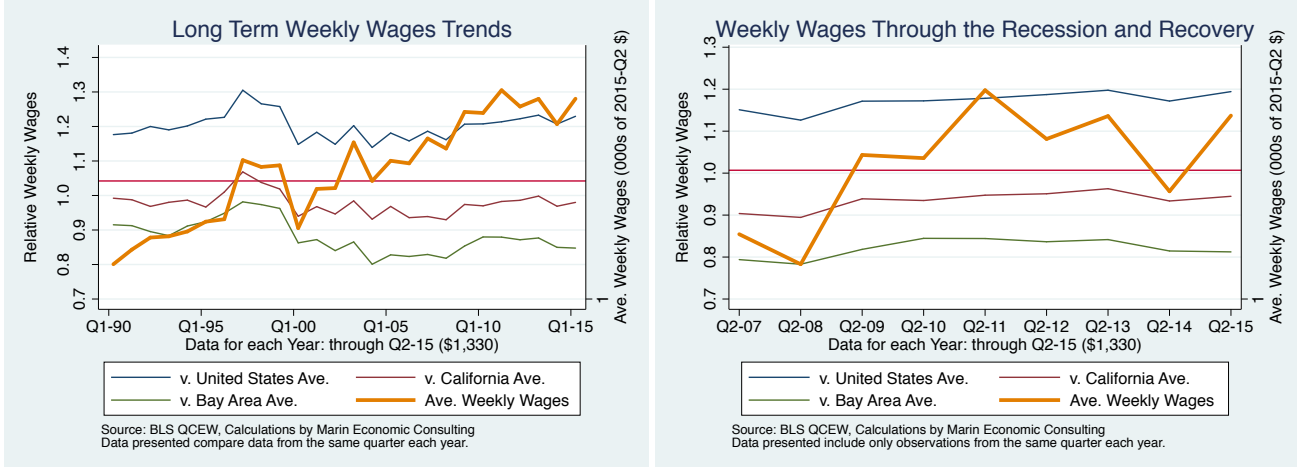


Figure 4 - 2: 1023: Financial activities

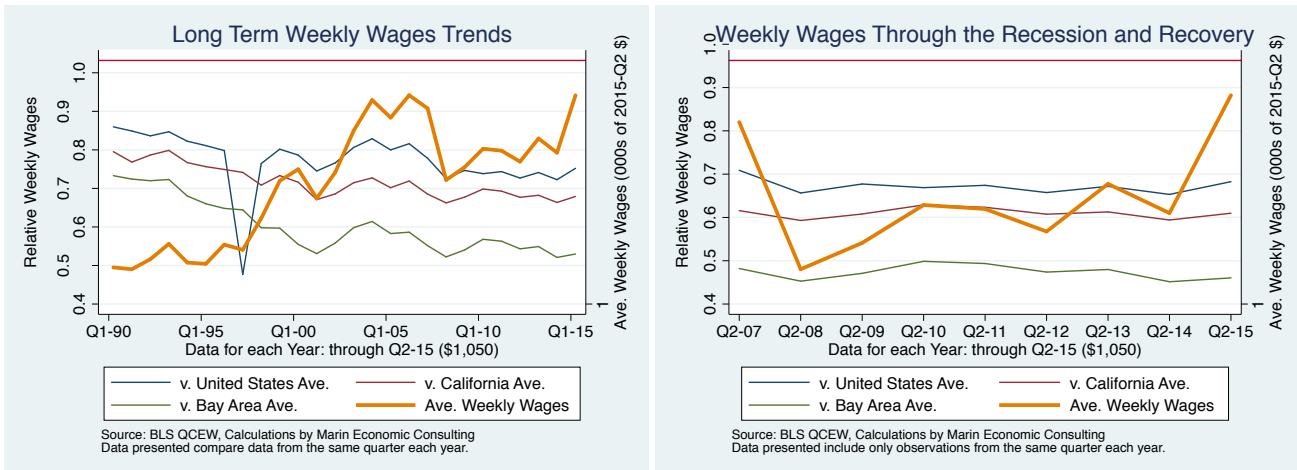


Figure 4 - 3: 1022: Information

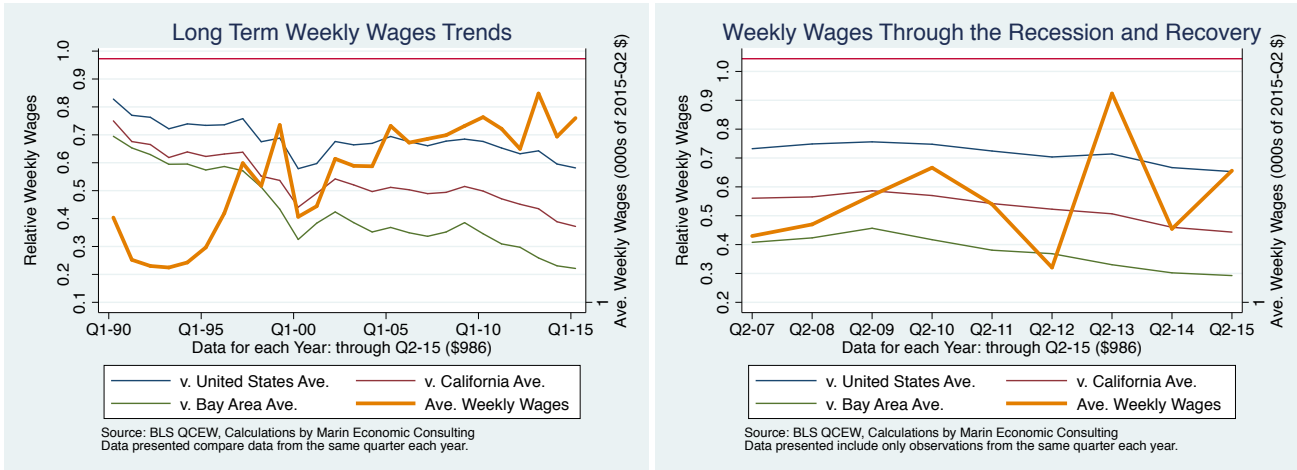


Figure 4 - 4: 1012: Construction

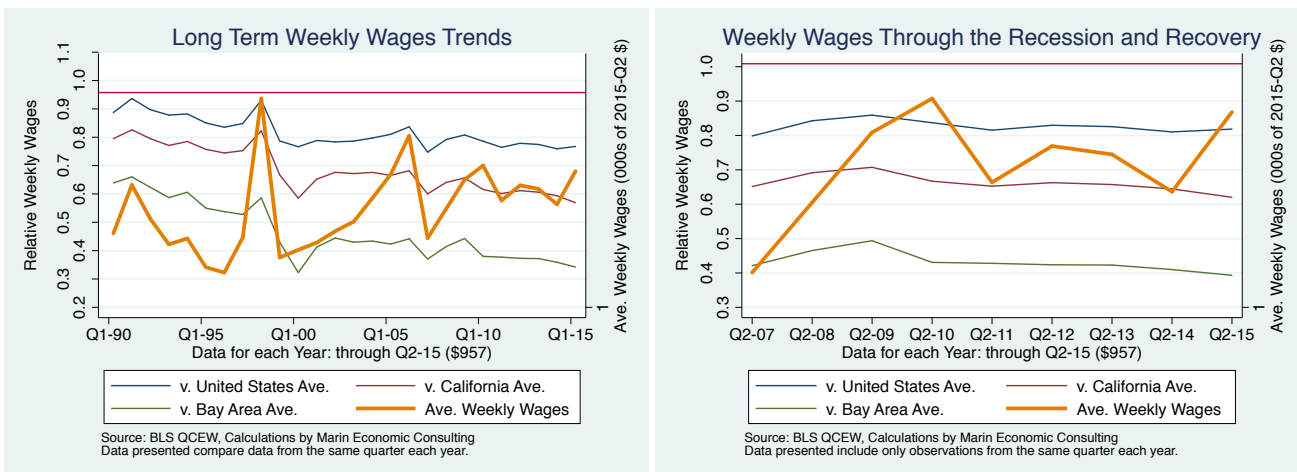


Figure 4 - 5: 1013: Manufacturing

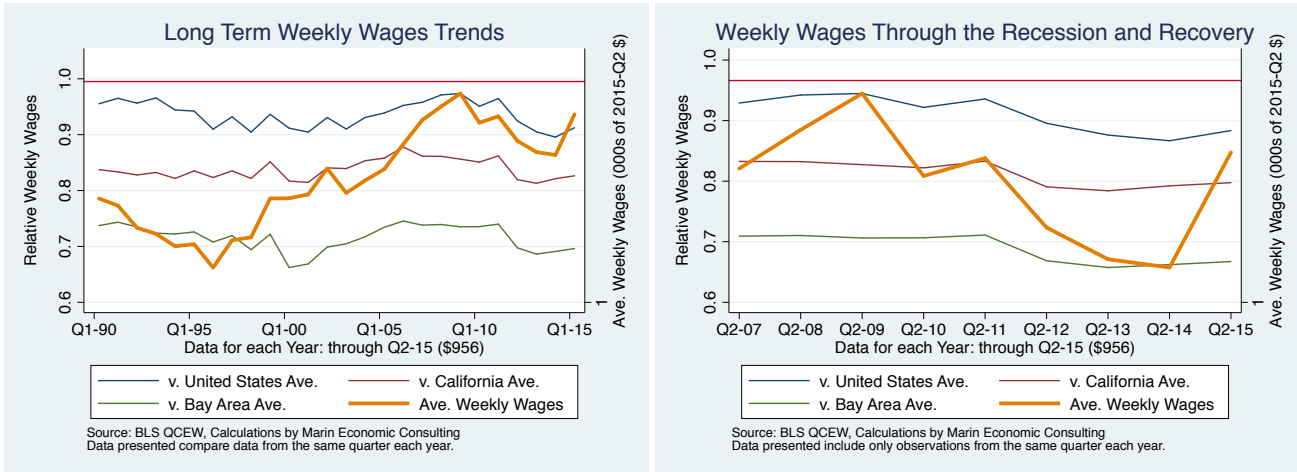


Figure 4 - 6: 1025: Education and health services

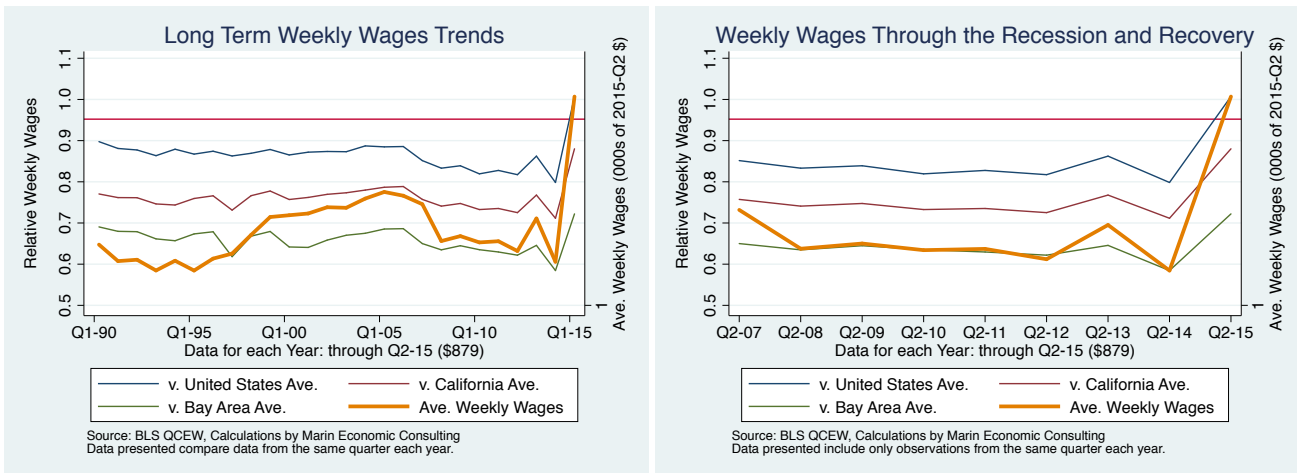


Figure 4 - 7: 10: All industries

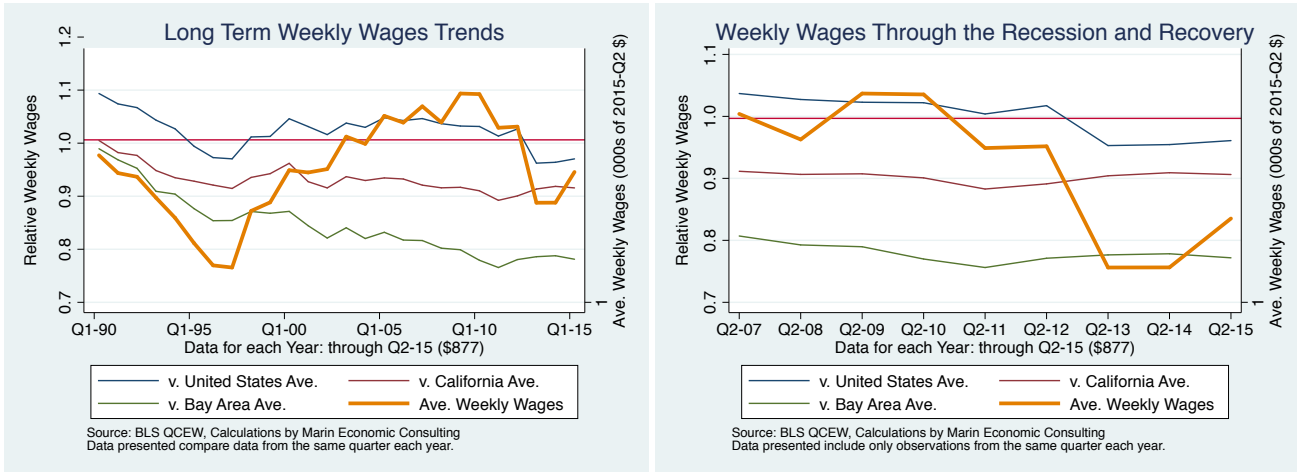


Figure 4 - 8: 1024: Professional and business services

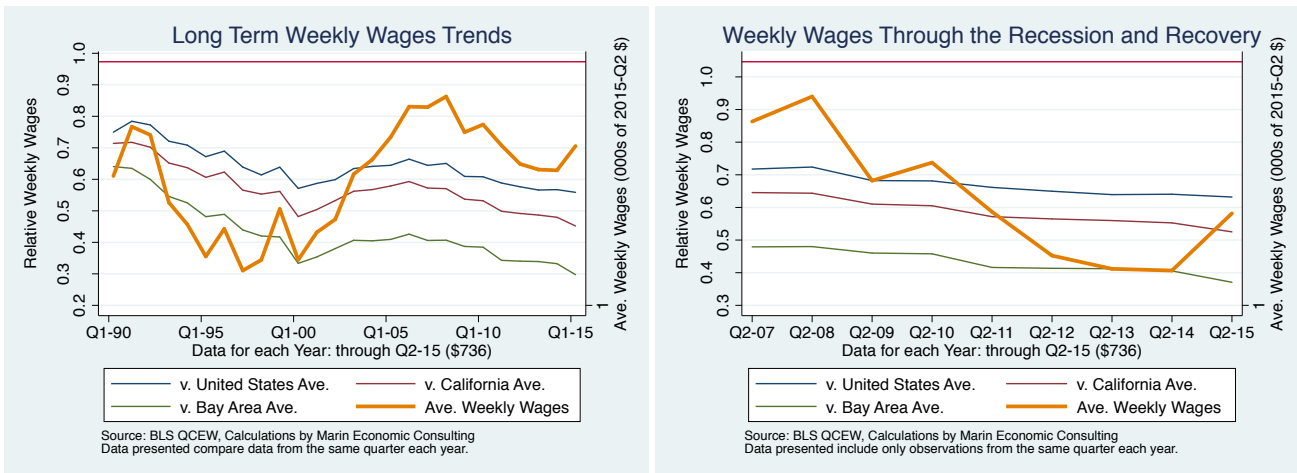


Figure 4 - 9: 1021: Trade, transportation, and utilities

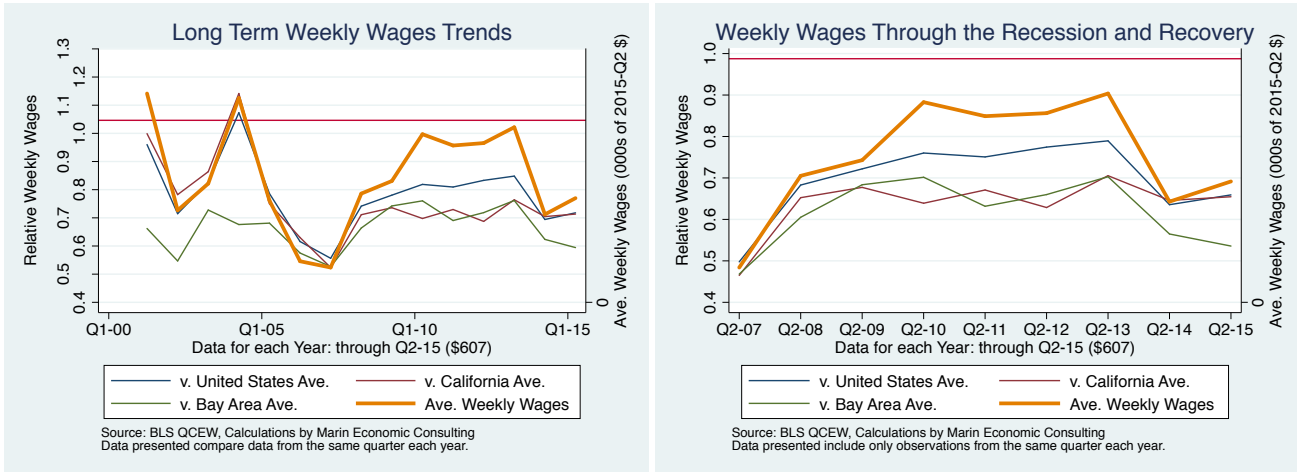


Figure 4 - 10: 1029: Unclassified

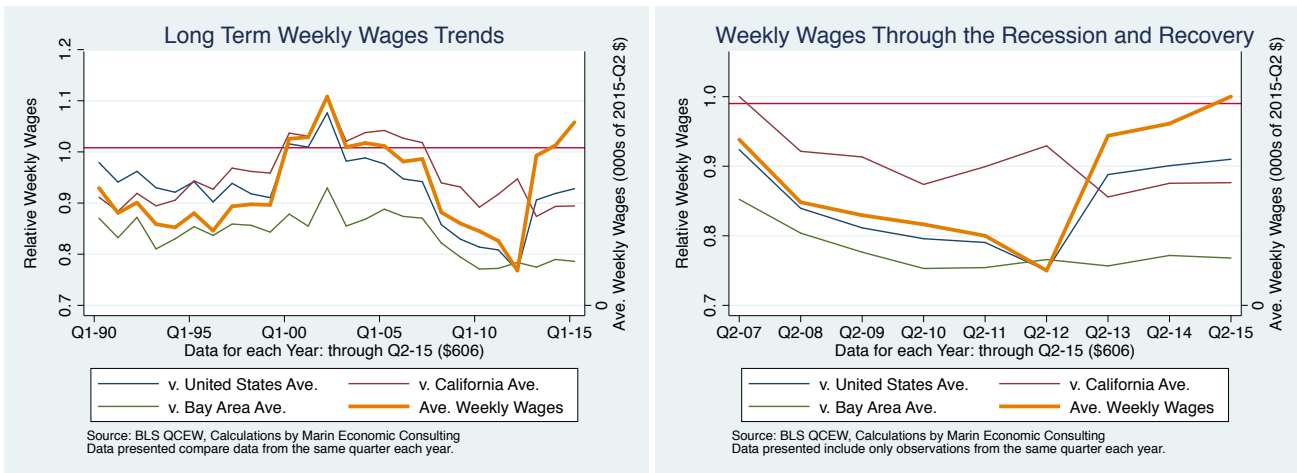


Figure 4 - 11: 1027: Other services

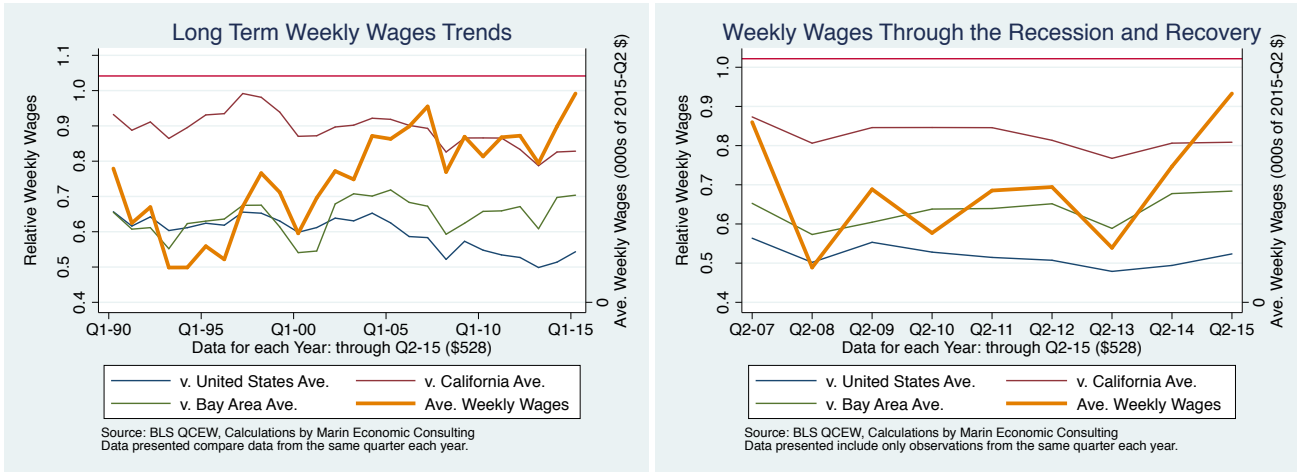


Figure 4 - 12: 1011: Natural resources and mining

