

# San Luis Obispo County Weekly Wages

Focus on Post-Recession Recovery

Q 3 – 2015 Update

*Produced by:*

**Marin Economic Consulting**

March 16, 2016

Jon Haveman, Principal

415-336-5705 or [Jon@MarinEconomicConsulting.com](mailto:Jon@MarinEconomicConsulting.com)

## **Contents**

1. Descriptions and References	2
2. Overview of Wage Changes Since the Onset of the Great Recession	3
3. Weekly Wages Over Time	4
4. Graphical Display of Weekly Wage Evolution by Industry (Super Sector)	5

## 1. Descriptions and References

The contents of this report illustrate the evolution of San Luis Obispo County wage patterns over time. This report presents:

**Wages:** Average weekly wages for the industry in the region. They are inflation adjusted to current dollars using: Consumer Price Index for All Urban Consumers: All Items, from the FRED Database maintained by the St. Louis Federal Reserve Bank.

The data underlying this report are from the Bureau of Labor Statistics: Quarterly Census of Employment and Wages (QCEW). These data are available on a quarterly basis, generally with a 5 month lag from the end of the quarter to the release of the data.

**QCEW:** The Quarterly Census of Employment and Wages (QCEW) program publishes a quarterly count of employment and wages reported by employers covering 98 percent of U.S. jobs, available at the county, MSA, state and national levels by industry. <http://www.bls.gov/cew/home.htm>

**Time Period:** The data extend from Q1-1990 through Q3 - 2015

**Seasonality:** There is a significant seasonal component to many industries. The QCEW data are not seasonally adjusted. Rather than seasonally adjusting the data, most comparisons in this report are between the same quarter in different years. The data presented are therefore the actual employment levels and wages (inflation adjusted) compared across years.

A particular focus of this report is on the post-Great Recession recovery. This is accomplished by comparing the most recent quarter of data to the same quarter in 2007, the last non-recessionary year for most of California and the United States.

Notes:

**Notes:** There are occasions where the data displayed seem to reflect implausible increases in either employment or wages. These changes are as reported in the QCEW data. For a closer look at these changes, please contact: [Jon@MarinEconomicConsulting.com](mailto:Jon@MarinEconomicConsulting.com)

## 2. Overview of Wage Changes Since the Onset of the Great Recession

Figure 2 - 1

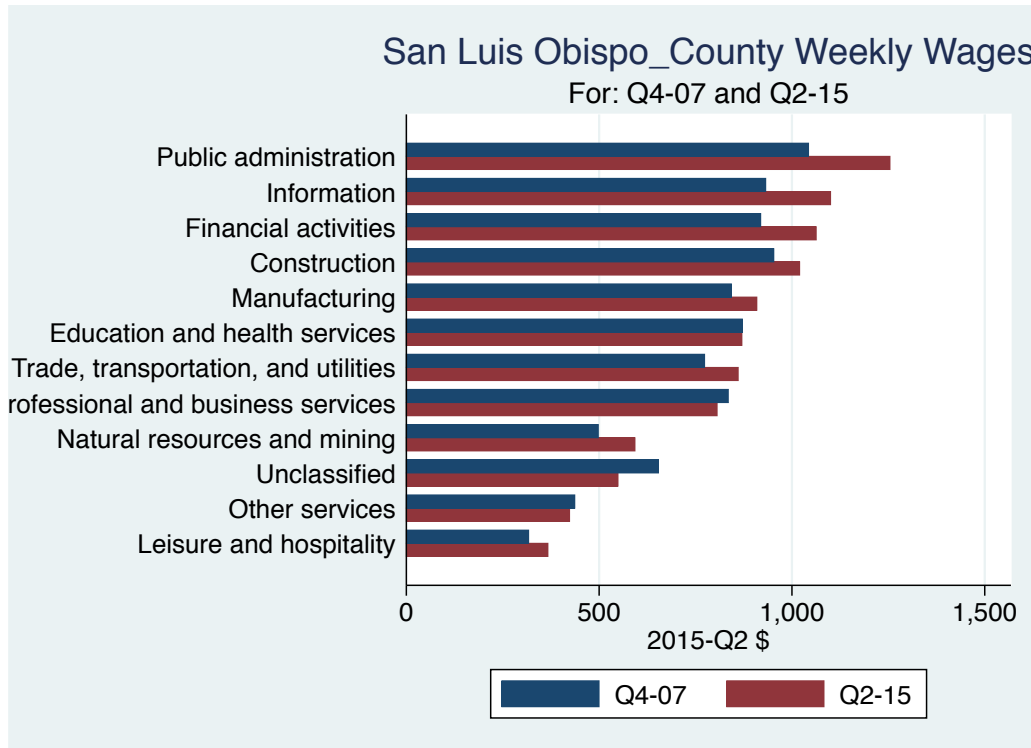


Table 2.1: Quarterly Summary for Q 3 – 2015

Sector	Levels in Q 3 – 2015				Change vs Q 3 in 2007			
	Employment	Wages	Relative to:		Employment	Wages	Relative to:	
			Bay	U.S.			Bay	U.S.
Information	1,558	1,417.0	0.3	0.8	81	542.01	-0.05	0.11
Public administration	7,792	1,202.3	0.7	1.0	-722	138.28	-0.05	-0.07
Financial activities	4,175	1,050.0	0.5	0.7	-388	209.00	-0.01	0.02
Construction	6,552	1,006.0	0.7	0.9	-959	180.00	-0.01	-0.01
Manufacturing	7,095	963.0	0.4	0.8	900	204.00	0.01	0.05
Education and health services	23,398	902.5	0.8	1.0	2,798	138.56	0.02	0.01
Trade, transportation, and utilities	21,528	873.4	0.8	1.0	-191	162.66	0.02	0.05
All industries	113,825	814.0	0.5	0.8	8,034	126.00	-0.05	-0.01
Professional and business services	12,577	810.0	0.4	0.7	2,964	90.95	-0.08	-0.07
Natural resources and mining	5,496	608.0	0.7	0.6	615	166.00	0.12	0.05
Unclassified	678	581.0	0.5	0.7	670	-315.00	-0.59	-0.47
Other services	4,725	501.7	0.6	0.8	452	3.33	-0.23	-0.18
Leisure and hospitality	18,017	385.2	0.7	0.9	1,768	64.95	-0.01	0.01
<b>Total</b>	<b>227,417</b>							

Source: BLS, QCEW; Calculations by Marin Economic Consulting

### 3. Weekly Wages Over Time

**Table3.1: Summary of Weekly Wages versus the Bay Area as A Whole**

Sector	Q 3 – 2015		Relative Wages: Q 3 of Each Year					
	Employment	Wages	1990	1995	2001	2004	2007	2015
Information	1,558	1,417.0	0.60	0.51	0.41	0.39	0.39	0.34
Public administration	7,792	1,202.3	0.90	0.75	0.67	0.71	0.77	0.72
Financial activities	4,175	1,050.0	0.65	0.52	0.48	0.48	0.48	0.47
Construction	6,552	1,006.0	0.72	0.73	0.64	0.80	0.72	0.71
Manufacturing	7,095	963.0	0.64	0.52	0.45	0.47	0.38	0.39
Education and health services	23,398	902.5	1.02	0.89	0.88	0.80	0.76	0.78
Trade, transportation, and utilities	21,528	873.4	0.76	0.73	0.67	0.79	0.75	0.77
All industries	113,825	814.0	0.71	0.62	0.55	0.59	0.56	0.51
Professional and business services	12,577	810.0	0.65	0.57	0.44	0.48	0.46	0.38
Natural resources and mining	5,496	608.0	0.74	0.69	0.55	0.73	0.63	0.75
Unclassified	678	581.0			0.51	0.54	1.11	0.52
Other services	4,725	501.7	0.54	0.65	0.74	0.81	0.87	0.64
Leisure and hospitality	18,017	385.2	0.75	0.68	0.67	0.70	0.71	0.69

Source: BLS, QCEW; Calculations by Marin Economic Consulting

**Table3.2: Summary of Weekly Wages versus California as A Whole**

Sector	Q 3 – 2015		Relative Wages: Q 3 of Each Year					
	Employment	Wages	1990	1995	2001	2004	2007	2015
Information	1,558	1,417.0	0.60	0.56	0.51	0.51	0.55	0.54
Public administration	7,792	1,202.3	0.95	0.79	0.75	0.77	0.86	0.80
Financial activities	4,175	1,050.0	0.70	0.60	0.59	0.58	0.62	0.63
Construction	6,552	1,006.0	0.82	0.84	0.81	0.95	0.85	0.85
Manufacturing	7,095	963.0	0.80	0.72	0.66	0.71	0.62	0.63
Education and health services	23,398	902.5	1.04	0.96	0.99	0.93	0.87	0.93
Trade, transportation, and utilities	21,528	873.4	0.84	0.82	0.79	0.91	0.88	0.93
All industries	113,825	814.0	0.80	0.74	0.72	0.76	0.74	0.72
Professional and business services	12,577	810.0	0.72	0.70	0.61	0.66	0.64	0.55
Natural resources and mining	5,496	608.0	1.06	0.98	0.90	0.92	0.81	0.88
Unclassified	678	581.0			0.67	0.55	1.02	0.64
Other services	4,725	501.7	0.56	0.71	0.90	0.97	1.01	0.72
Leisure and hospitality	18,017	385.2	0.75	0.69	0.71	0.72	0.74	0.77

Source: BLS, QCEW; Calculations by Marin Economic Consulting

**Table3.3: Summary of Weekly Wages versus the United States as A Whole**

Sector	Q 3 – 2015		Relative Wages: Q 3 of Each Year					
	Employment	Wages	1990	1995	2001	2004	2007	2015
Information	1,558	1,417.0	0.70	0.64	0.65	0.66	0.71	0.82
Public administration	7,792	1,202.3	1.17	0.98	0.94	0.97	1.09	1.02
Financial activities	4,175	1,050.0	0.76	0.65	0.68	0.68	0.70	0.73
Construction	6,552	1,006.0	0.92	0.95	0.90	1.04	0.94	0.93
Manufacturing	7,095	963.0	0.91	0.82	0.78	0.83	0.77	0.82
Education and health services	23,398	902.5	1.11	1.02	1.08	1.02	0.98	0.99
Trade, transportation, and utilities	21,528	873.4	0.97	0.93	0.88	1.02	0.99	1.04
All industries	113,825	814.0	0.88	0.82	0.81	0.86	0.84	0.84
Professional and business services	12,577	810.0	0.75	0.78	0.70	0.73	0.72	0.65
Natural resources and mining	5,496	608.0	0.73	0.66	0.61	0.65	0.54	0.59
Unclassified	678	581.0			0.59	0.53	1.14	0.67
Other services	4,725	501.7	0.60	0.72	0.88	0.92	0.93	0.75
Leisure and hospitality	18,017	385.2	0.90	0.77	0.83	0.90	0.91	0.92

Source: BLS, QCEW; Calculations by Marin Economic Consulting

# 4. Graphical Display of Weekly Wage Evolution by Industry (Super Sector)

Graphs present only Q 3 data for each year.

Figure 4 - 1: 1022: Information

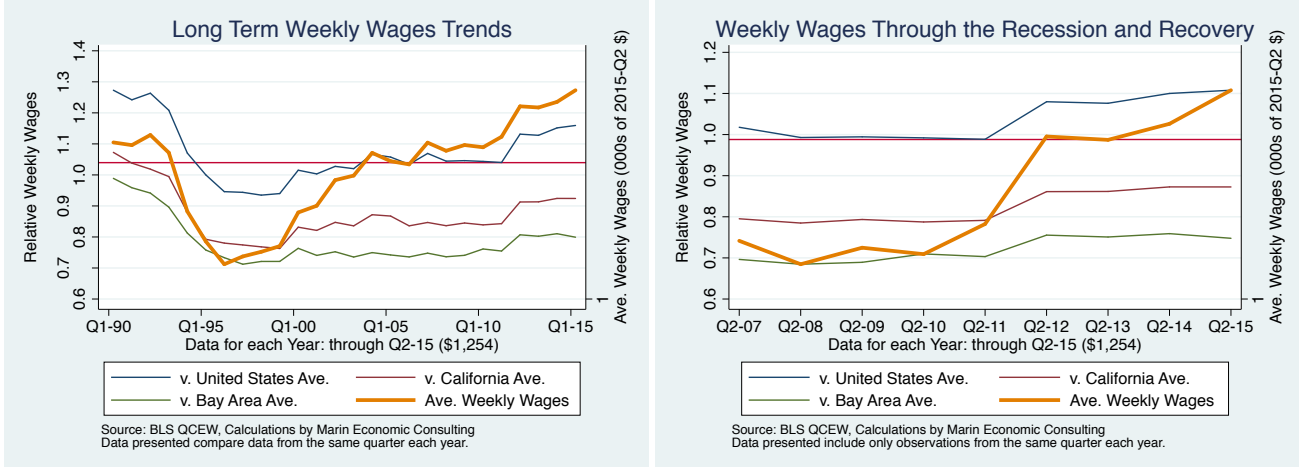


Figure 4 - 2: 1028: Public administration

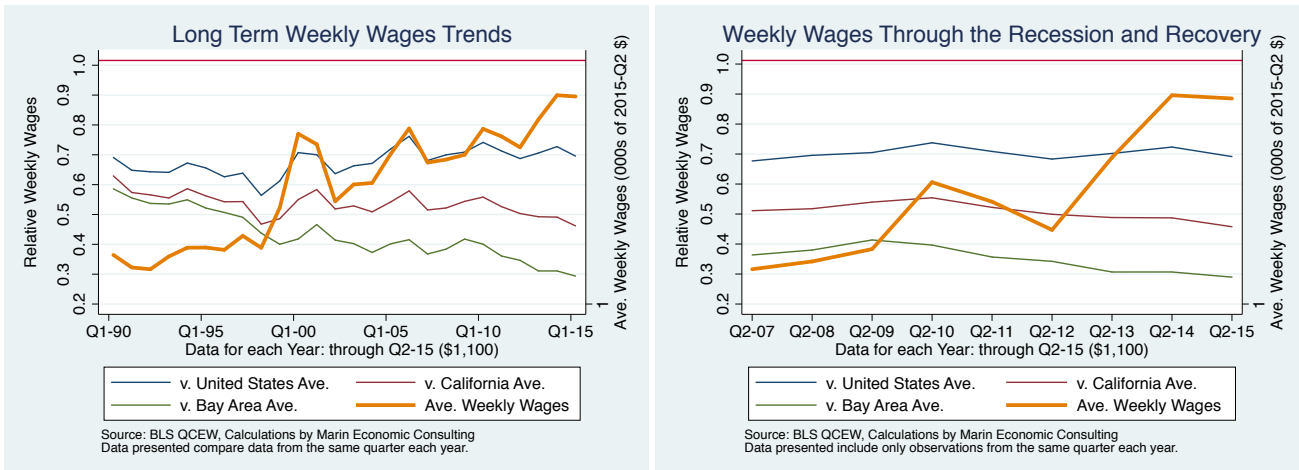


Figure 4 - 3: 1023: Financial activities

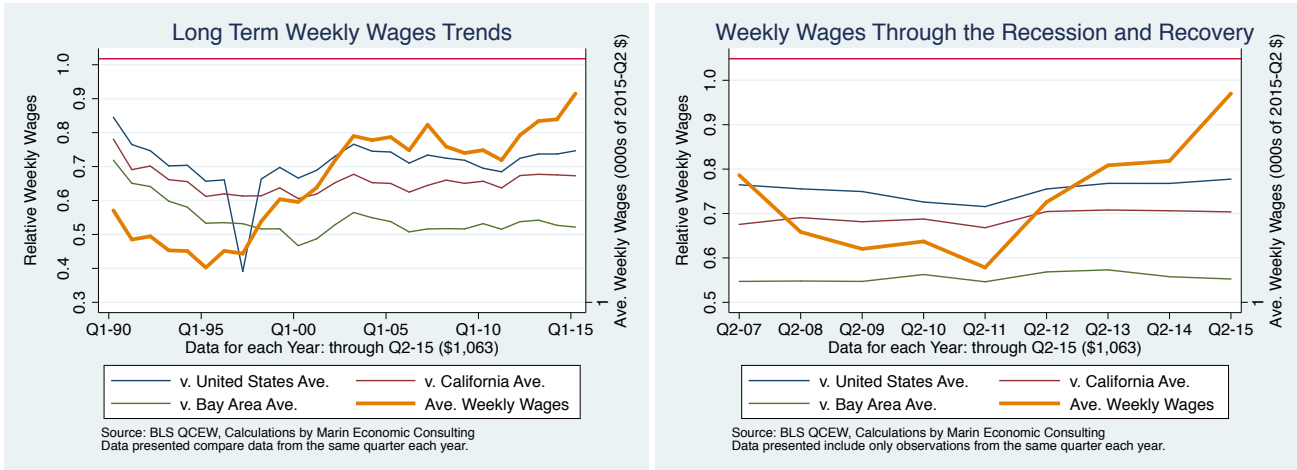


Figure 4 - 4: 1012: Construction

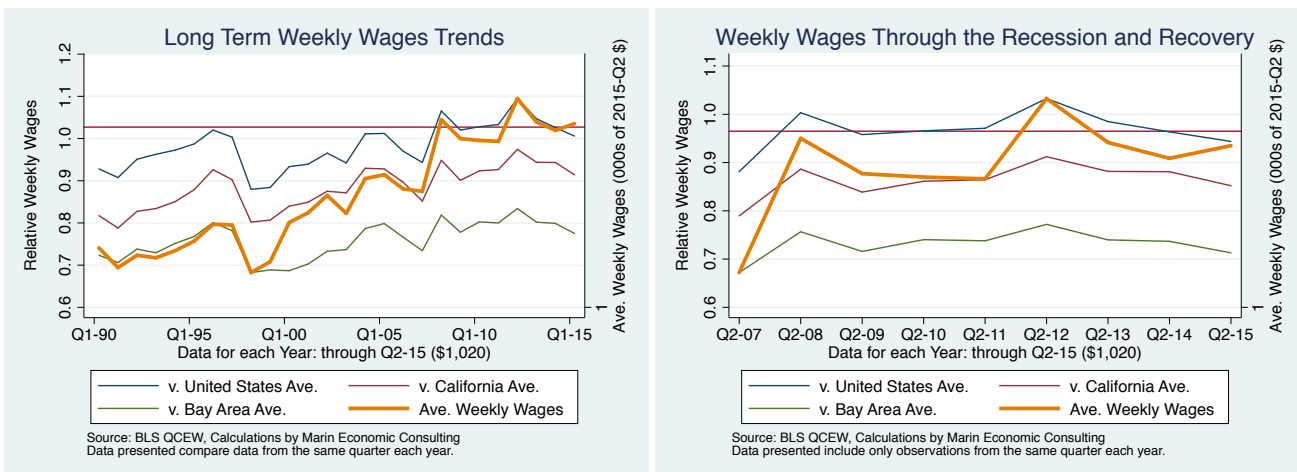


Figure 4 - 5: 1013: Manufacturing

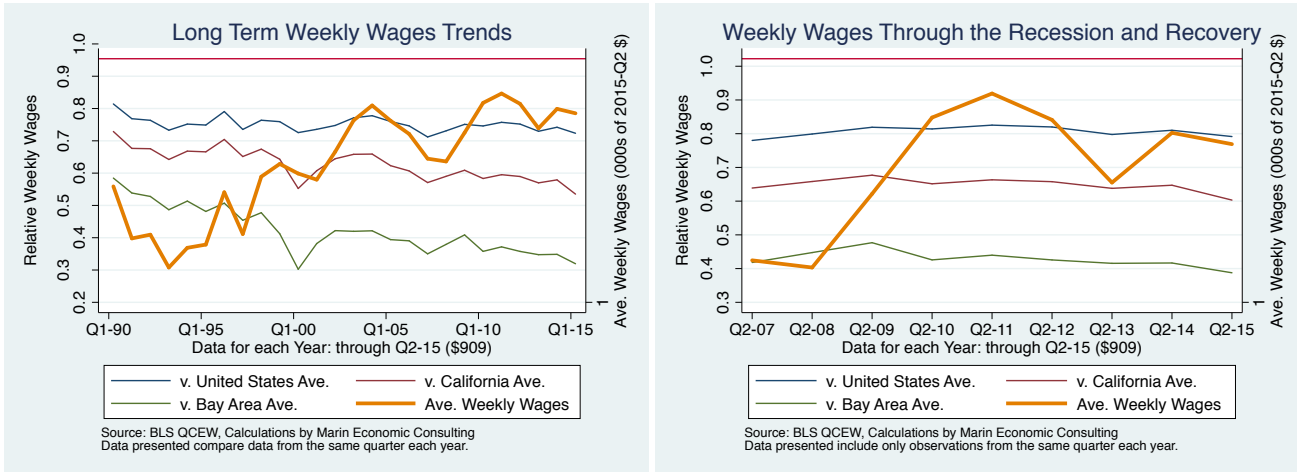


Figure 4 - 6: 1025: Education and health services

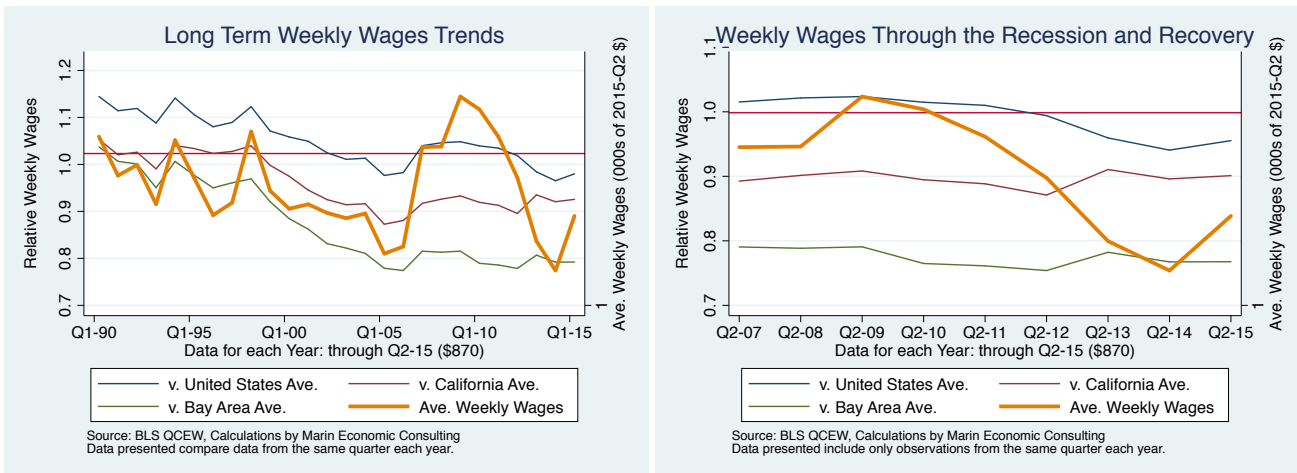


Figure 4 - 7: 1021: Trade, transportation, and utilities

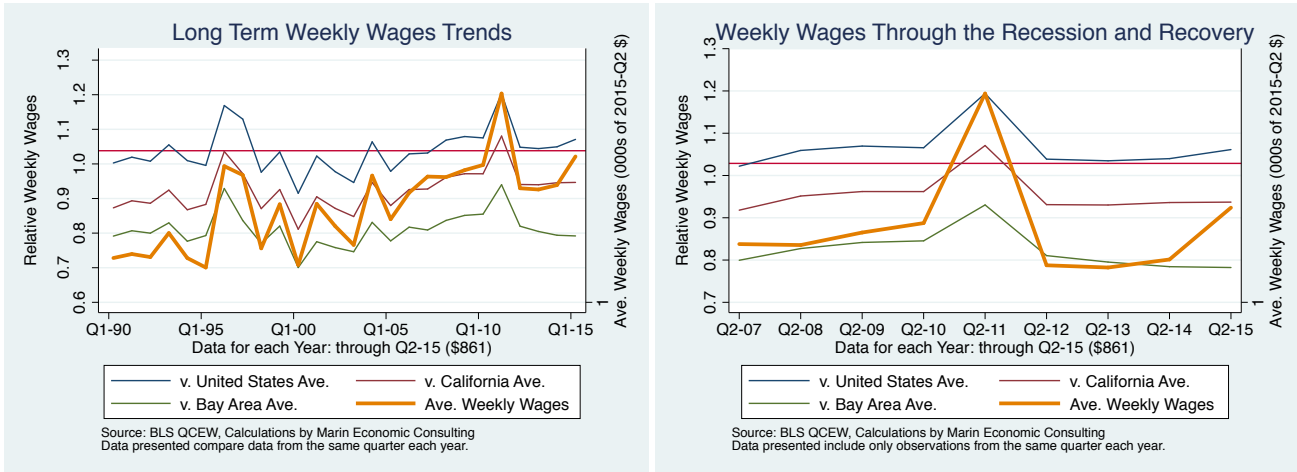


Figure 4 - 8: 10: All industries

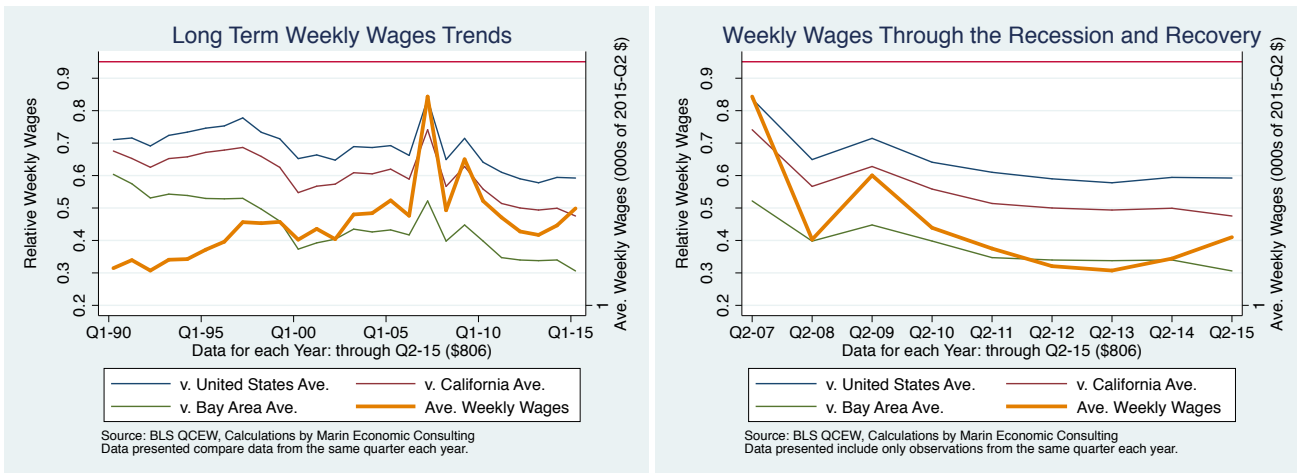




Figure 4 - 9: 1024: Professional and business services

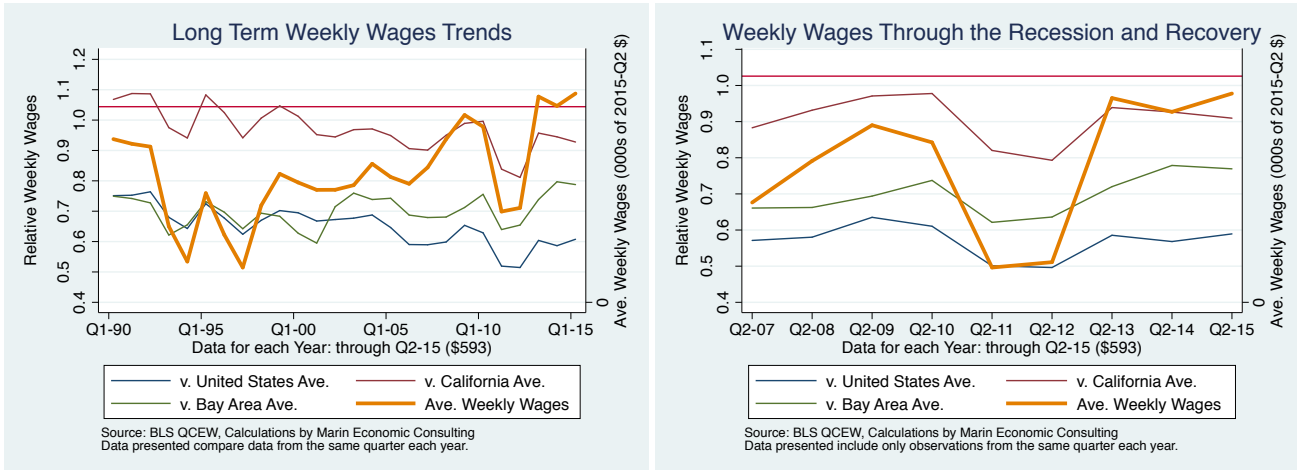


Figure 4 - 10: 1011: Natural resources and mining

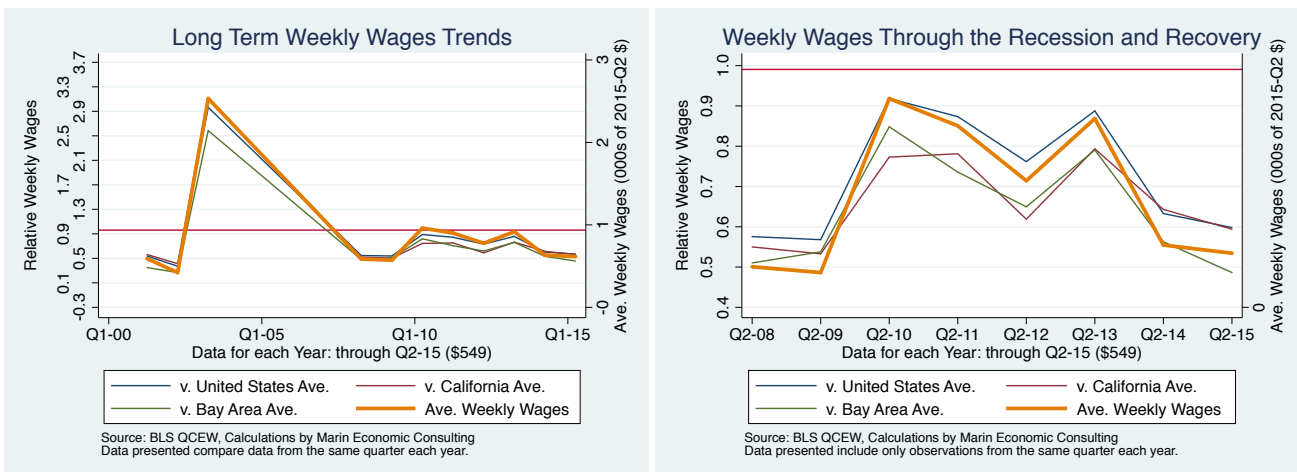


Figure 4 - 11: 1029: Unclassified

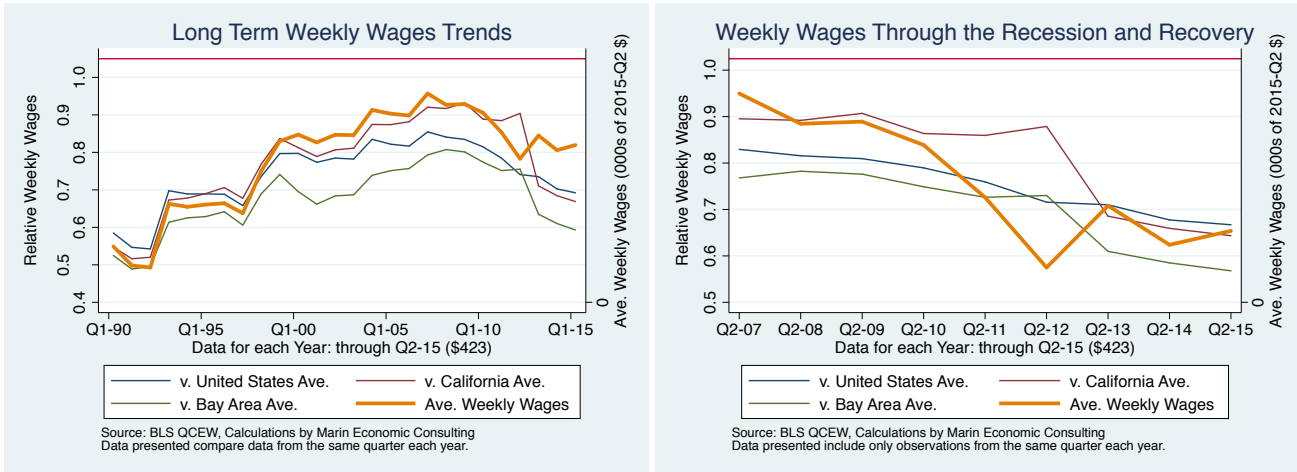


Figure 4 - 12: 1027: Other services

