

# Santa Cruz County Weekly Wages

Focus on Post-Recession Recovery

Q 3 – 2015 Update

*Produced by:*

**Marin Economic Consulting**

March 16, 2016

Jon Haveman, Principal

415-336-5705 or [Jon@MarinEconomicConsulting.com](mailto:Jon@MarinEconomicConsulting.com)

## **Contents**

1. Descriptions and References	2
2. Overview of Wage Changes Since the Onset of the Great Recession	3
3. Weekly Wages Over Time	4
4. Graphical Display of Weekly Wage Evolution by Industry (Super Sector)	5

## 1. Descriptions and References

The contents of this report illustrate the evolution of Santa Cruz County wage patterns over time. This report presents:

**Wages:** Average weekly wages for the industry in the region. They are inflation adjusted to current dollars using: Consumer Price Index for All Urban Consumers: All Items, from the FRED Database maintained by the St. Louis Federal Reserve Bank.

The data underlying this report are from the Bureau of Labor Statistics: Quarterly Census of Employment and Wages (QCEW). These data are available on a quarterly basis, generally with a 5 month lag from the end of the quarter to the release of the data.

**QCEW:** The Quarterly Census of Employment and Wages (QCEW) program publishes a quarterly count of employment and wages reported by employers covering 98 percent of U.S. jobs, available at the county, MSA, state and national levels by industry. <http://www.bls.gov/cew/home.htm>

**Time Period:** The data extend from Q1-1990 through Q 3 - 2015

**Seasonality:** There is a significant seasonal component to many industries. The QCEW data are not seasonally adjusted. Rather than seasonally adjusting the data, most comparisons in this report are between the same quarter in different years. The data presented are therefore the actual employment levels and wages (inflation adjusted) compared across years.

A particular focus of this report is on the post-Great Recession recovery. This is accomplished by comparing the most recent quarter of data to the same quarter in 2007, the last non-recessionary year for most of California and the United States.

Notes:

**Notes:** There are occasions where the data displayed seem to reflect implausible increases in either employment or wages. These changes are as reported in the QCEW data. For a closer look at these changes, please contact: [Jon@MarinEconomicConsulting.com](mailto:Jon@MarinEconomicConsulting.com)

## 2. Overview of Wage Changes Since the Onset of the Great Recession

Figure 2 - 1

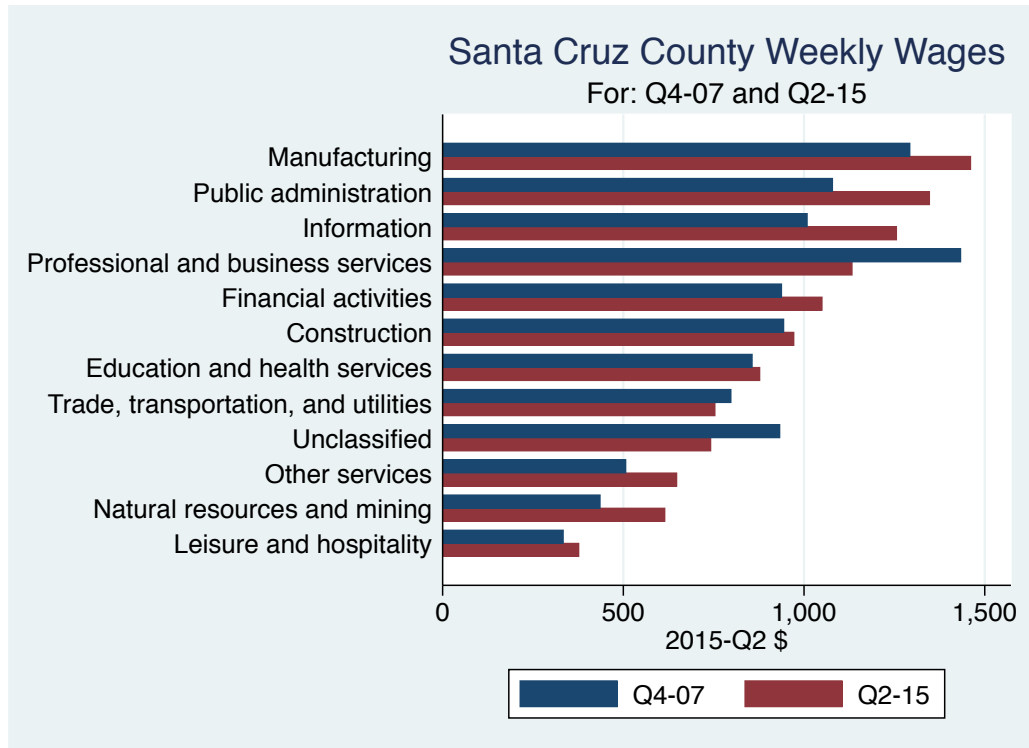


Table 2.1: Quarterly Summary for Q3 – 2015

Sector	Levels in Q3 – 2015		Relative to:		Change vs Q3 in 2007		Relative to:	
	Employment	Wages	Bay	U.S.	Employment	Wages	Bay	U.S.
Manufacturing	6,651	1,613.0	0.6	1.4	329	512.00	0.10	0.26
Information	810	1,363.0	0.3	0.8	-462	450.00	-0.08	0.05
Public administration	3,821	1,225.4	0.7	1.0	-34	15.29	-0.14	-0.20
Financial activities	3,588	1,117.0	0.5	0.8	-102	252.00	0.01	0.05
Professional and business services	9,888	1,091.1	0.5	0.9	-134	-44.83	-0.22	-0.26
Construction	3,707	994.0	0.7	0.9	-1,882	118.00	-0.06	-0.08
Education and health services	22,030	944.9	0.8	1.0	4,358	128.92	0.00	-0.01
All industries	105,062	888.0	0.6	0.9	1,571	138.00	-0.05	-0.01
Trade, transportation, and utilities	17,906	769.5	0.7	0.9	-2,448	60.59	-0.07	-0.07
Unclassified	587	722.0	0.6	0.8	581	262.00	0.07	0.24
Natural resources and mining	11,673	683.0	0.8	0.7	298	172.00	0.11	0.04
Other services	4,172	651.1	0.8	1.0	-55	171.09	-0.01	0.08
Leisure and hospitality	14,980	398.4	0.7	1.0	2,079	56.99	-0.04	-0.01
<b>Total</b>	<b>204,875</b>							

Source: BLS, QCEW; Calculations by Marin Economic Consulting

### 3. Weekly Wages Over Time

**Table3.1: Summary of Weekly Wages versus the Bay Area as A Whole**

Sector	Q 3 – 2015		Relative Wages: Q 3 of Each Year					
	Employment	Wages	1990	1995	2001	2004	2007	2015
Manufacturing	6,651	1,613.0	0.64	0.66	0.68	0.59	0.55	0.65
Information	810	1,363.0	1.07	0.91	0.82	0.75	0.41	0.32
Public administration	3,821	1,225.4	0.80	0.92	0.78	0.77	0.87	0.73
Financial activities	3,588	1,117.0	0.65	0.54	0.58	0.54	0.50	0.50
Professional and business services	9,888	1,091.1	0.98	0.87	0.82	0.77	0.73	0.52
Construction	3,707	994.0	0.76	0.78	0.77	0.87	0.77	0.70
Education and health services	22,030	944.9	0.87	0.76	0.81	0.79	0.82	0.82
All industries	105,062	888.0	0.71	0.68	0.65	0.64	0.61	0.55
Trade, transportation, and utilities	17,906	769.5	0.72	0.73	0.73	0.73	0.74	0.67
Unclassified	587	722.0			0.78	0.99	0.57	0.64
Natural resources and mining	11,673	683.0	0.62	0.71	0.65	0.76	0.73	0.84
Other services	4,172	651.1	0.80	0.77	0.73	0.78	0.83	0.83
Leisure and hospitality	14,980	398.4	0.76	0.78	0.74	0.73	0.75	0.72

Source: BLS, QCEW; Calculations by Marin Economic Consulting

**Table3.2: Summary of Weekly Wages versus California as A Whole**

Sector	Q 3 – 2015		Relative Wages: Q 3 of Each Year					
	Employment	Wages	1990	1995	2001	2004	2007	2015
Manufacturing	6,651	1,613.0	0.80	0.91	1.00	0.89	0.90	1.05
Information	810	1,363.0	1.08	1.01	1.03	0.98	0.58	0.52
Public administration	3,821	1,225.4	0.84	0.98	0.87	0.83	0.97	0.82
Financial activities	3,588	1,117.0	0.70	0.62	0.71	0.66	0.63	0.67
Professional and business services	9,888	1,091.1	1.09	1.08	1.14	1.05	1.01	0.74
Construction	3,707	994.0	0.86	0.90	0.97	1.03	0.90	0.84
Education and health services	22,030	944.9	0.88	0.82	0.91	0.91	0.93	0.97
All industries	105,062	888.0	0.80	0.82	0.85	0.82	0.80	0.78
Trade, transportation, and utilities	17,906	769.5	0.80	0.82	0.85	0.84	0.88	0.82
Unclassified	587	722.0			1.03	0.99	0.53	0.80
Natural resources and mining	11,673	683.0	0.89	1.00	1.06	0.96	0.94	0.99
Other services	4,172	651.1	0.83	0.84	0.89	0.93	0.97	0.93
Leisure and hospitality	14,980	398.4	0.77	0.79	0.79	0.75	0.79	0.79

Source: BLS, QCEW; Calculations by Marin Economic Consulting

**Table3.3: Summary of Weekly Wages versus the United States as A Whole**

Sector	Q 3 – 2015		Relative Wages: Q 3 of Each Year					
	Employment	Wages	1990	1995	2001	2004	2007	2015
Manufacturing	6,651	1,613.0	0.90	1.04	1.18	1.04	1.11	1.38
Information	810	1,363.0	1.25	1.14	1.31	1.26	0.74	0.79
Public administration	3,821	1,225.4	1.04	1.21	1.10	1.06	1.24	1.04
Financial activities	3,588	1,117.0	0.76	0.68	0.82	0.77	0.72	0.77
Professional and business services	9,888	1,091.1	1.14	1.19	1.29	1.18	1.14	0.88
Construction	3,707	994.0	0.96	1.01	1.08	1.12	1.00	0.92
Education and health services	22,030	944.9	0.95	0.87	1.00	1.00	1.05	1.04
All industries	105,062	888.0	0.88	0.90	0.97	0.93	0.92	0.91
Trade, transportation, and utilities	17,906	769.5	0.91	0.93	0.96	0.94	0.99	0.92
Unclassified	587	722.0			0.91	0.96	0.59	0.83
Natural resources and mining	11,673	683.0	0.61	0.67	0.72	0.67	0.62	0.67
Other services	4,172	651.1	0.89	0.85	0.87	0.89	0.90	0.98
Leisure and hospitality	14,980	398.4	0.91	0.89	0.92	0.94	0.97	0.95

Source: BLS, QCEW; Calculations by Marin Economic Consulting

## 4. Graphical Display of Weekly Wage Evolution by Industry (Super Sector)

Graphs present only Q 3 data for each year.

Figure 4 - 1: 1013: Manufacturing

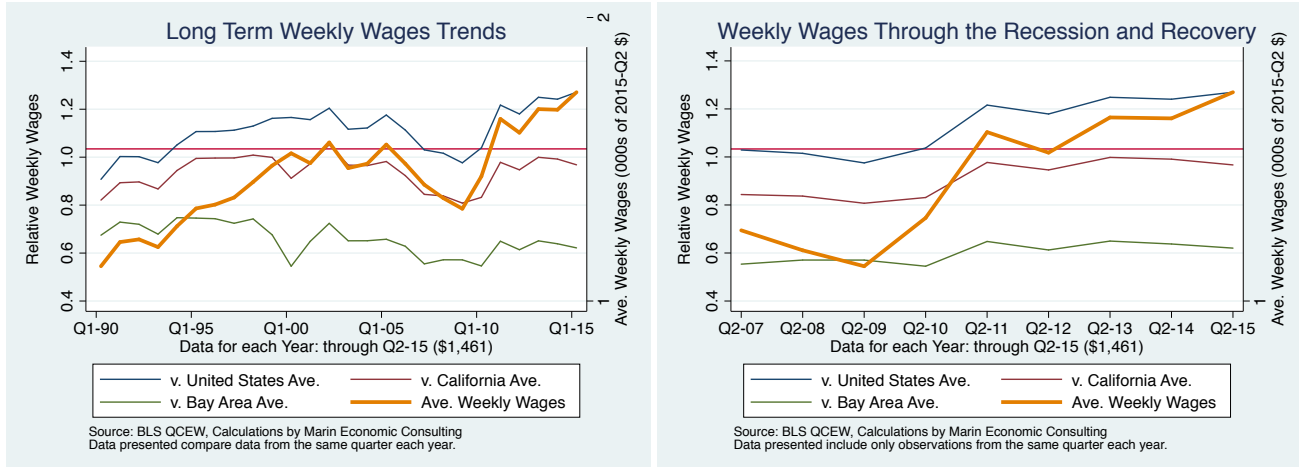


Figure 4 - 2: 1022: Information

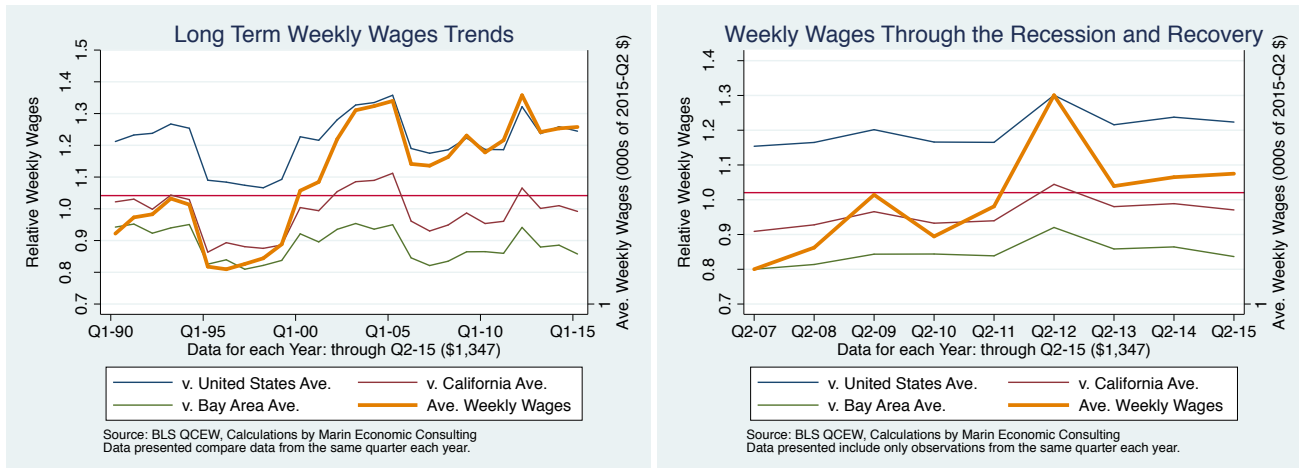


Figure 4 - 3: 1028: Public administration

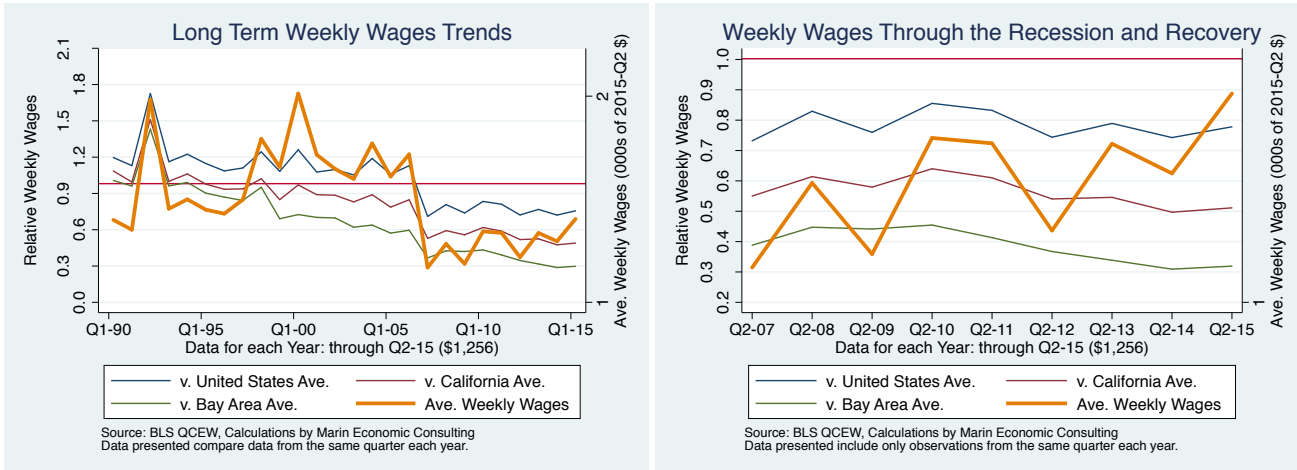


Figure 4 - 4: 1023: Financial activities

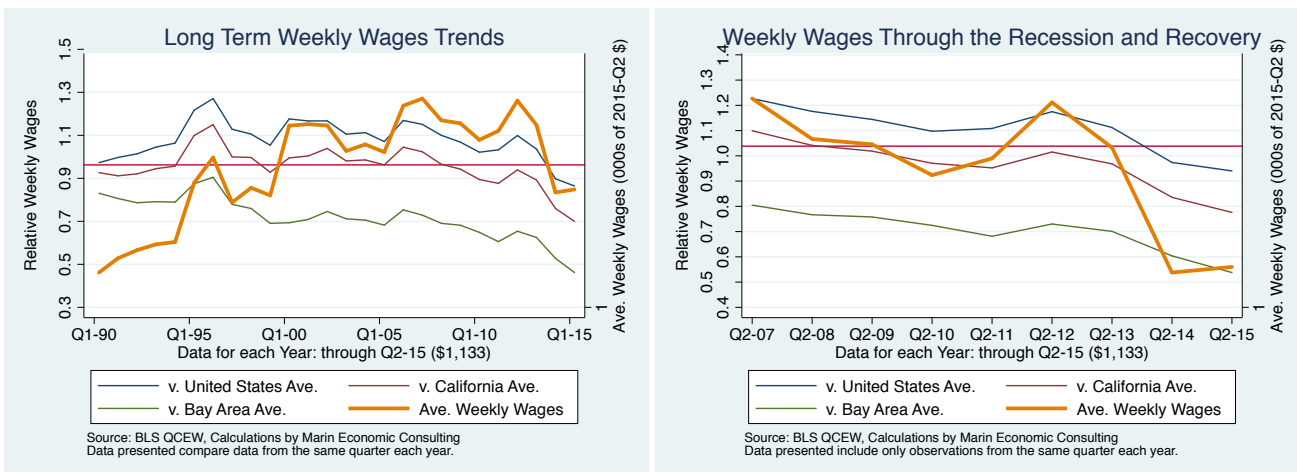


Figure 4 - 5: 1024: Professional and business services

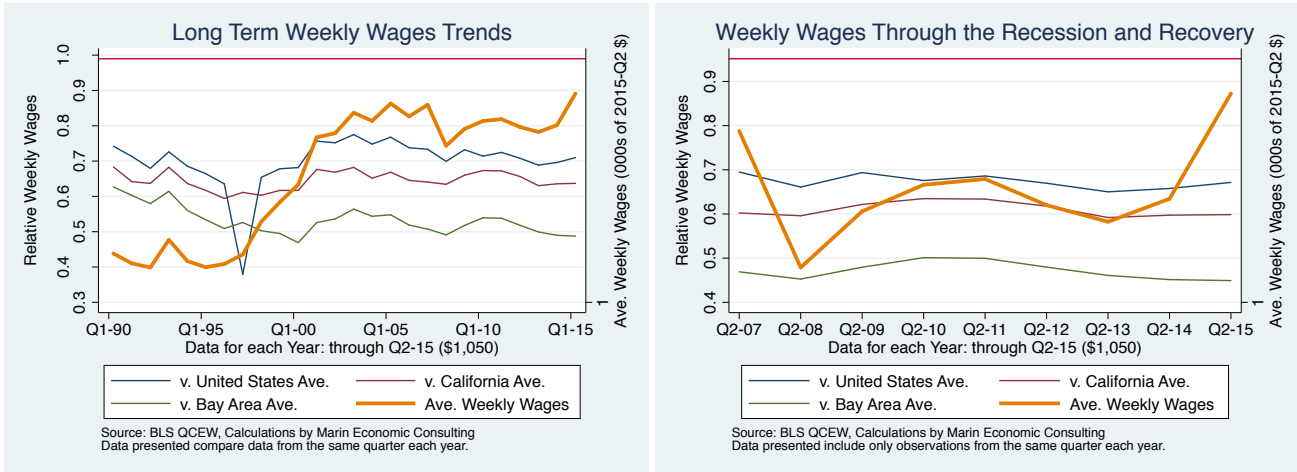


Figure 4 - 6: 1012: Construction

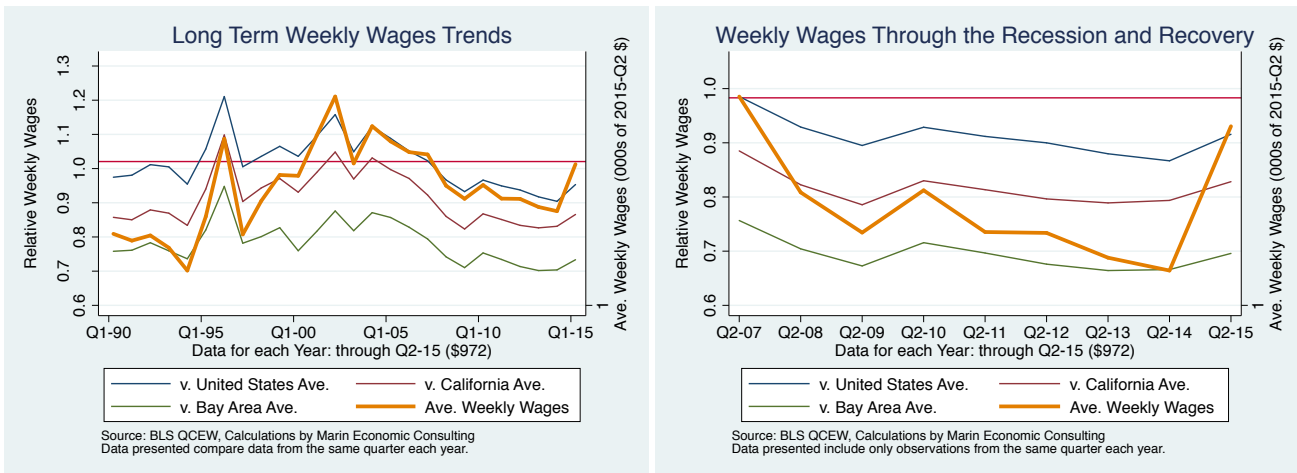


Figure 4 - 7: 1025: Education and health services

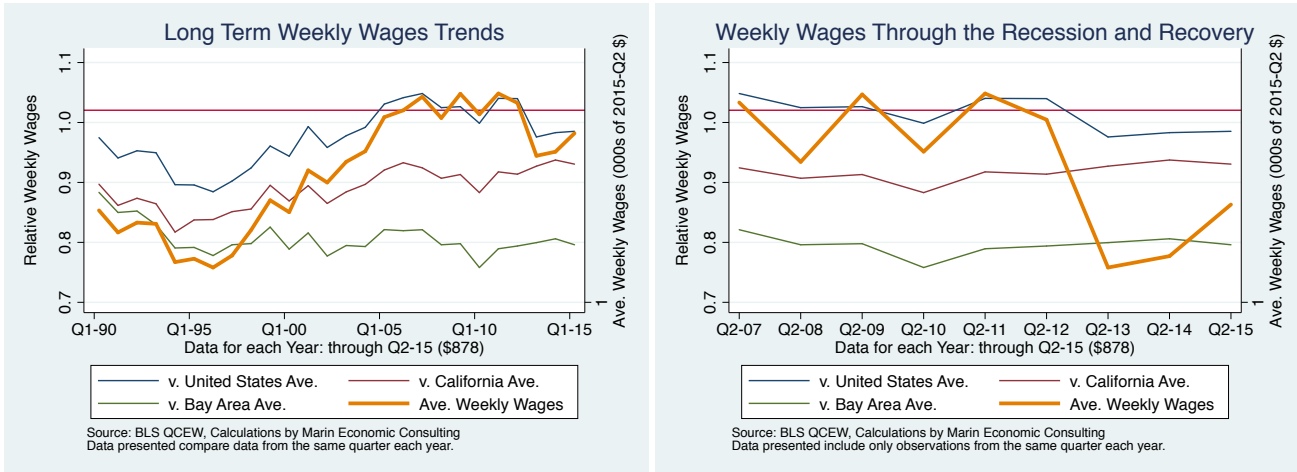


Figure 4 - 8: 10: All industries

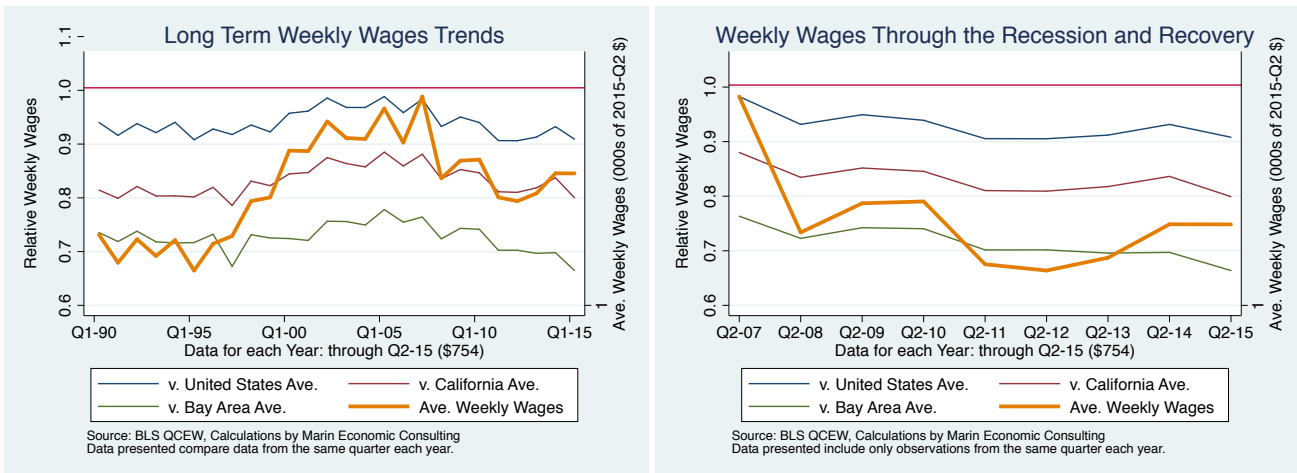




Figure 4 - 9: 1021: Trade, transportation, and utilities

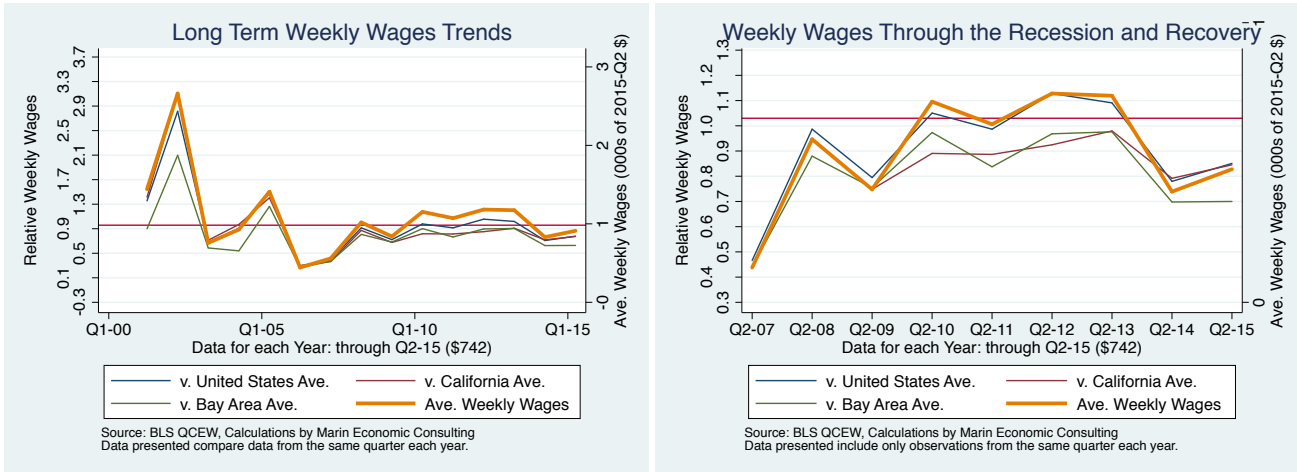


Figure 4 - 10: 1029: Unclassified

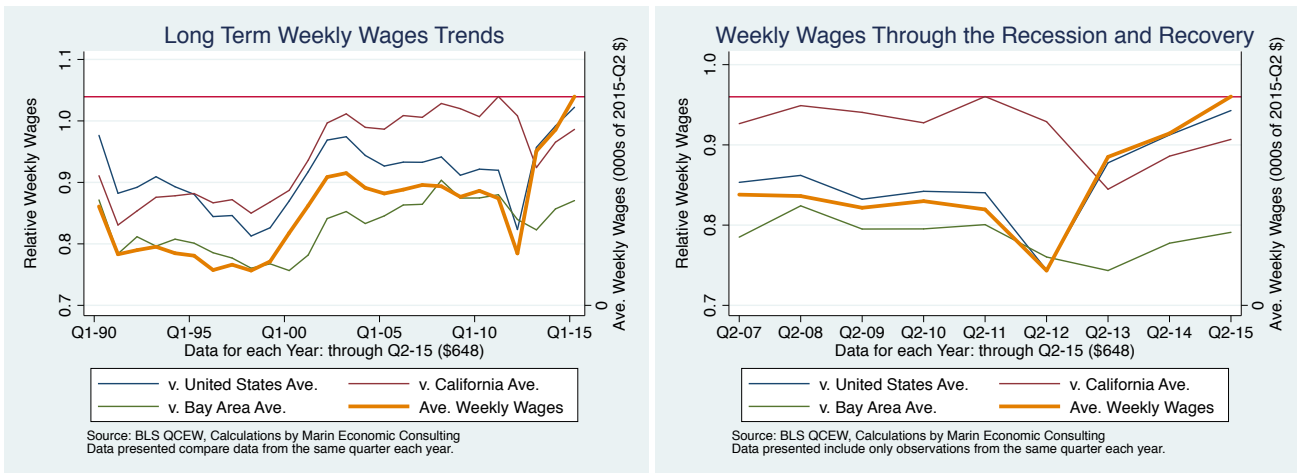


Figure 4 - 11: 1011: Natural resources and mining

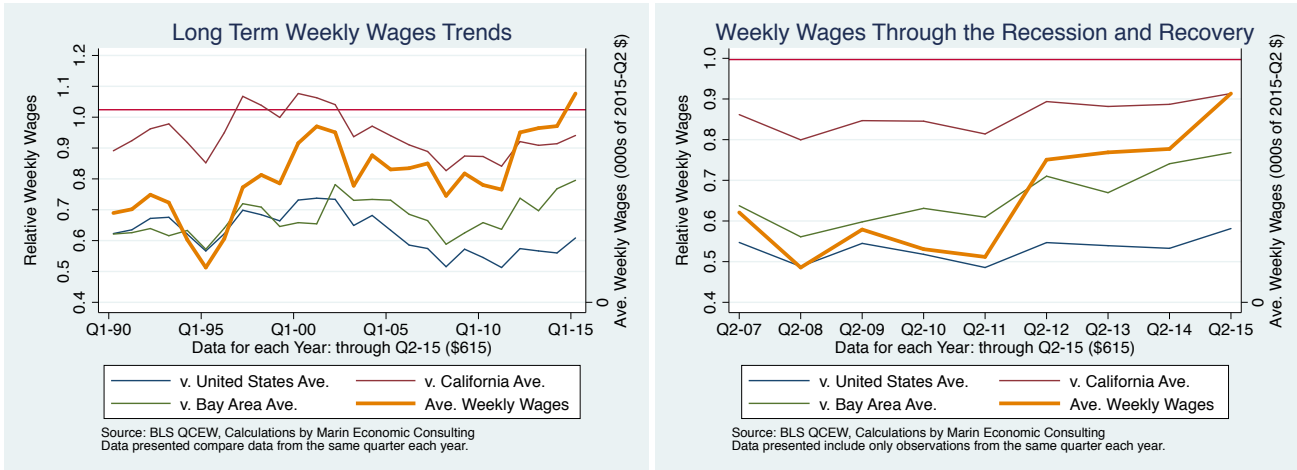


Figure 4 - 12: 1027: Other services

