

Silicon Valley Weekly Wages

Focus on Post-Recession Recovery

Q 3 – 2015 Update

Produced by:

Marin Economic Consulting

March 15, 2016

Jon Haveman, Principal

415-336-5705 or Jon@MarinEconomicConsulting.com

Contents

Descriptions and References	2
Overview of Wage Changes Since Onset of Recession	3
Weekly Wages Over Time	4
Graphical Display of Weekly Wage Evolution by Industry (Super Sector)	5

Descriptions and References

Regional Definition: The Silicon Valley region consists of: San Mateo and Santa Clara counties in Northern California.

The contents of this report illustrate the evolution of Silicon Valley wage patterns over time. This report presents:

Wages: Average weekly wages for the industry in the region. They are inflation adjusted to current dollars using: Consumer Price Index for All Urban Consumers: All Items, from the FRED Database maintained by the St. Louis Federal Reserve Bank.

The data underlying this report are from the Bureau of Labor Statistics: Quarterly Census of Employment and Wages (QCEW). These data are available on a quarterly basis, generally with a 5 month lag from the end of the quarter to the release of the data.

QCEW: The Quarterly Census of Employment and Wages (QCEW) program publishes a quarterly count of employment and wages reported by employers covering 98 percent of U.S. jobs, available at the county, MSA, state and national levels by industry. <http://www.bls.gov/cew/home.htm>

Time Period: The data extend from Q1-1990 through Q3 - 2015

Seasonality: There is a significant seasonal component to many industries. The QCEW data are not seasonally adjusted. Rather than seasonally adjusting the data, most comparisons in this report are between the same quarter in different years. The data presented are therefore the actual employment levels and wages (inflation adjusted) compared across years.

A particular focus of this report is on the post-Great Recession recovery. This is accomplished by comparing the most recent quarter of data to the same quarter in 2007, the last non-recessionary year for most of California and the United States.

Notes:

Notes: There are occasions where the data displayed seem to reflect implausible increases in either employment or wages. These changes are as reported in the QCEW data. For a closer look at these changes, please contact: Jon@MarinEconomicConsulting.com

Overview of Wage Changes Since the Onset of the Great Recession

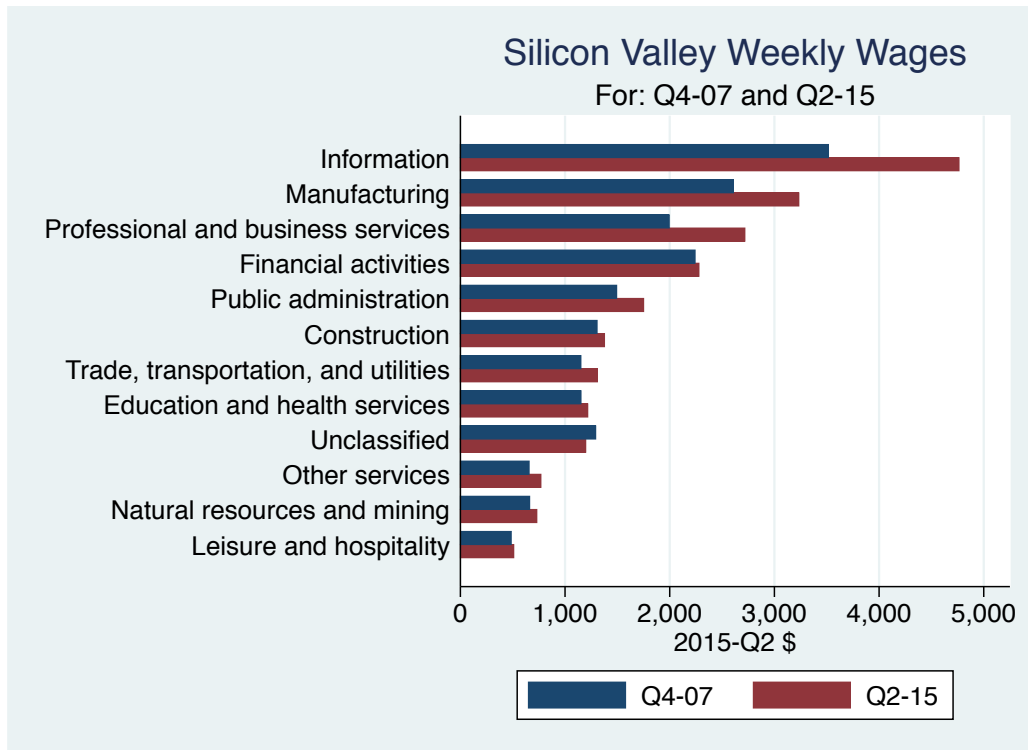


Table: Quarterly Summary for Q 3 – 2015

Sector	Levels in Q 3 – 2015				Change vs Q 3 in 2007			
	Employment	Wages	Relative to:		Employment	Wages	Relative to:	
			Bay	U.S.			Bay	U.S.
Information	107,039	5,159.6	1.2	3.0	46,940	2,179.31	-0.10	0.58
Manufacturing	185,553	3,242.7	1.3	2.8	-11,244	658.22	0.01	0.15
Professional and business services	293,679	2,439.9	1.2	2.0	51,543	686.85	0.02	0.21
Financial activities	56,878	2,337.6	1.1	1.6	-2,183	667.12	0.10	0.22
All industries	1,411,269	2,036.3	1.3	2.1	176,810	522.87	0.04	0.24
Public administration	34,057	1,696.8	1.0	1.4	-2,566	166.26	-0.09	-0.13
Construction	68,446	1,427.0	1.0	1.3	1,059	237.77	-0.03	-0.04
Trade, transportation, and utilities	219,392	1,332.3	1.2	1.6	-3,344	247.16	0.03	0.08
Unclassified	7,904	1,261.7	1.1	1.4	7,881	108.32	-0.30	-0.02
Education and health services	248,677	1,210.8	1.1	1.3	65,192	125.00	-0.03	-0.07
Other services	41,056	777.4	1.0	1.2	-3,666	173.56	-0.06	0.03
Natural resources and mining	5,990	753.4	0.9	0.7	-730	170.48	0.10	0.02
Leisure and hospitality	140,732	515.1	0.9	1.2	26,267	87.66	-0.02	0.02
Total	2,820,671							

Source: BLS, QCEW; Calculations by Marin Economic Consulting

Weekly Wages Over Time

Table: Summary of Weekly Wages versus the Bay Area as A Whole

Sector	Q 3 – 2015		Relative Wages: Q 3 of Each Year					
	Employment	Wages	1990	1995	2001	2004	2007	2015
Information	107,039	5,159.6	1.06	1.15	1.19	1.25	1.33	1.23
Manufacturing	185,553	3,242.7	1.13	1.16	1.19	1.24	1.29	1.30
Professional and business services	293,679	2,439.9	1.06	1.10	1.14	1.17	1.13	1.15
Financial activities	56,878	2,337.6	0.88	0.89	0.96	0.96	0.96	1.06
All industries	1,411,269	2,036.3	1.10	1.14	1.18	1.19	1.23	1.27
Public administration	34,057	1,696.8	1.01	1.04	1.01	1.03	1.10	1.01
Construction	68,446	1,427.0	1.01	1.06	1.15	1.03	1.04	1.01
Trade, transportation, and utilities	219,392	1,332.3	1.05	1.08	1.11	1.06	1.14	1.17
Unclassified	7,904	1,261.7			1.32	1.24	1.43	1.13
Education and health services	248,677	1,210.8	1.02	1.01	1.03	1.05	1.08	1.05
Other services	41,056	777.4	1.04	1.08	1.03	1.00	1.05	0.99
Natural resources and mining	5,990	753.4	0.73	0.80	0.73	0.97	0.83	0.93
Leisure and hospitality	140,732	515.1	0.96	0.96	0.96	0.96	0.94	0.93

Source: BLS, QCEW; Calculations by Marin Economic Consulting

Table: Summary of Weekly Wages versus California as A Whole

Sector	Q 3 – 2015		Relative Wages: Q 3 of Each Year					
	Employment	Wages	1990	1995	2001	2004	2007	2015
Information	107,039	5,159.6	1.07	1.27	1.48	1.64	1.88	1.98
Manufacturing	185,553	3,242.7	1.42	1.61	1.74	1.86	2.11	2.12
Professional and business services	293,679	2,439.9	1.18	1.37	1.57	1.60	1.56	1.65
Financial activities	56,878	2,337.6	0.96	1.02	1.19	1.15	1.22	1.41
All industries	1,411,269	2,036.3	1.24	1.37	1.54	1.52	1.62	1.80
Public administration	34,057	1,696.8	1.07	1.10	1.12	1.12	1.23	1.13
Construction	68,446	1,427.0	1.15	1.22	1.45	1.22	1.22	1.21
Trade, transportation, and utilities	219,392	1,332.3	1.16	1.20	1.31	1.23	1.35	1.43
Unclassified	7,904	1,261.7			1.75	1.24	1.32	1.40
Education and health services	248,677	1,210.8	1.04	1.08	1.17	1.21	1.24	1.24
Other services	41,056	777.4	1.09	1.18	1.25	1.19	1.22	1.11
Natural resources and mining	5,990	753.4	1.04	1.13	1.19	1.22	1.07	1.10
Leisure and hospitality	140,732	515.1	0.96	0.98	1.02	0.98	0.99	1.02

Source: BLS, QCEW; Calculations by Marin Economic Consulting

Table: Summary of Weekly Wages versus the United States as A Whole

Sector	Q 3 – 2015		Relative Wages: Q 3 of Each Year					
	Employment	Wages	1990	1995	2001	2004	2007	2015
Information	107,039	5,159.6	1.23	1.43	1.89	2.12	2.40	2.99
Manufacturing	185,553	3,242.7	1.60	1.83	2.05	2.19	2.61	2.77
Professional and business services	293,679	2,439.9	1.23	1.51	1.79	1.79	1.75	1.97
Financial activities	56,878	2,337.6	1.03	1.11	1.36	1.35	1.40	1.62
All industries	1,411,269	2,036.3	1.36	1.51	1.74	1.72	1.85	2.09
Public administration	34,057	1,696.8	1.32	1.36	1.41	1.42	1.57	1.44
Construction	68,446	1,427.0	1.29	1.38	1.61	1.33	1.36	1.32
Trade, transportation, and utilities	219,392	1,332.3	1.33	1.36	1.47	1.38	1.51	1.59
Unclassified	7,904	1,261.7			1.54	1.20	1.47	1.45
Education and health services	248,677	1,210.8	1.12	1.15	1.27	1.33	1.40	1.33
Other services	41,056	777.4	1.16	1.19	1.22	1.13	1.13	1.16
Natural resources and mining	5,990	753.4	0.72	0.76	0.81	0.86	0.71	0.74
Leisure and hospitality	140,732	515.1	1.15	1.10	1.19	1.22	1.21	1.23

Source: BLS, QCEW; Calculations by Marin Economic Consulting

Graphical Display of Weekly Wage Evolution by Industry (Super Sector)

Graphs present only Q 3 data for each year.

Figure 1: **1022: Information**

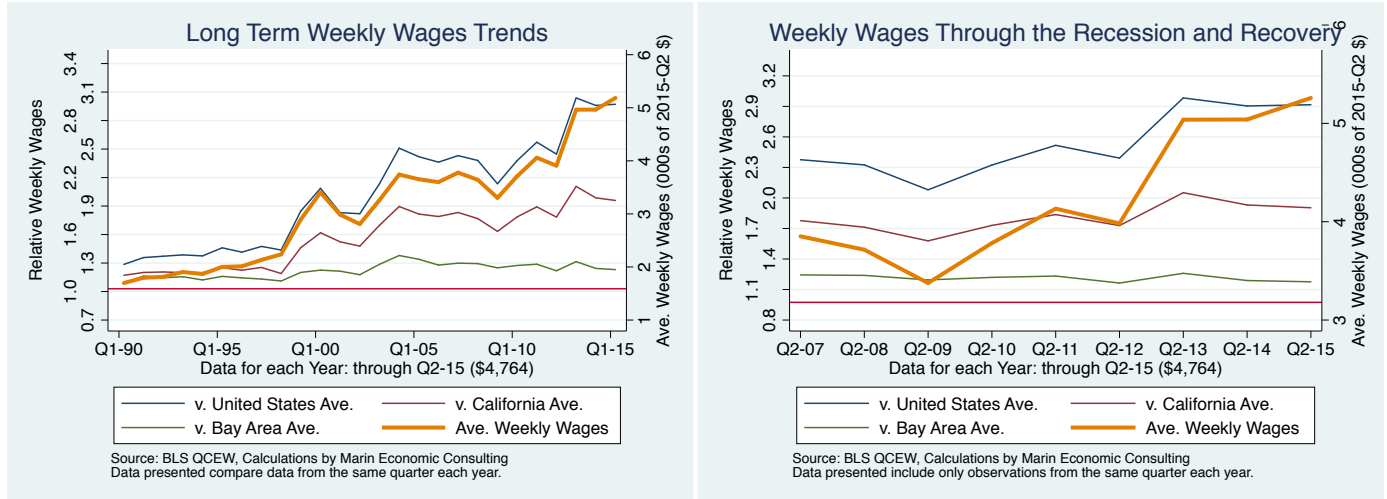


Figure 2: **1013: Manufacturing**

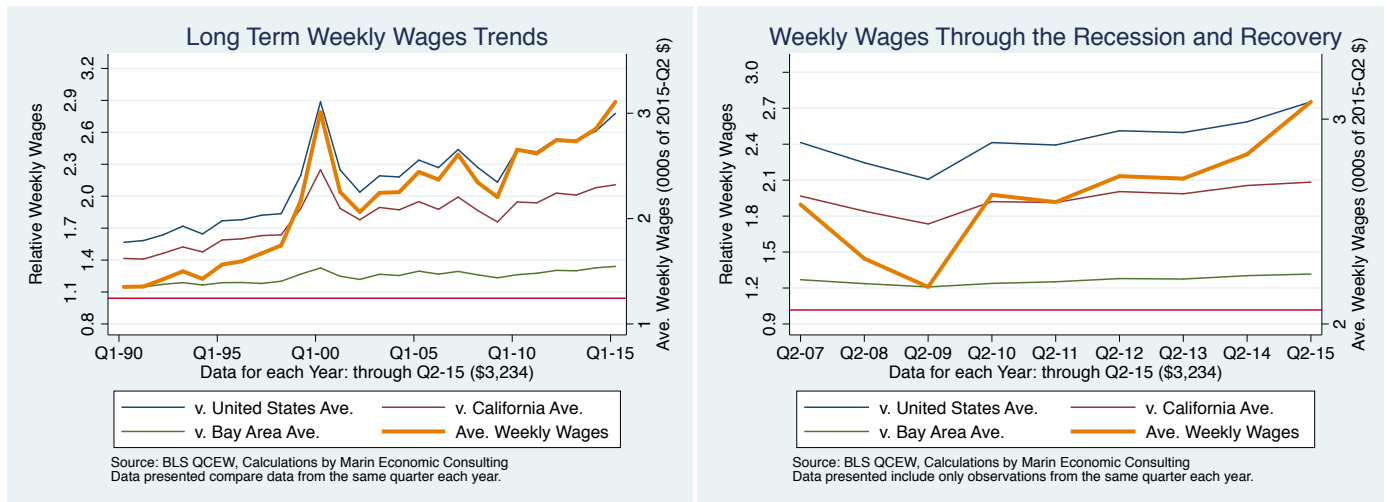


Figure 3: 1024: Professional and business services

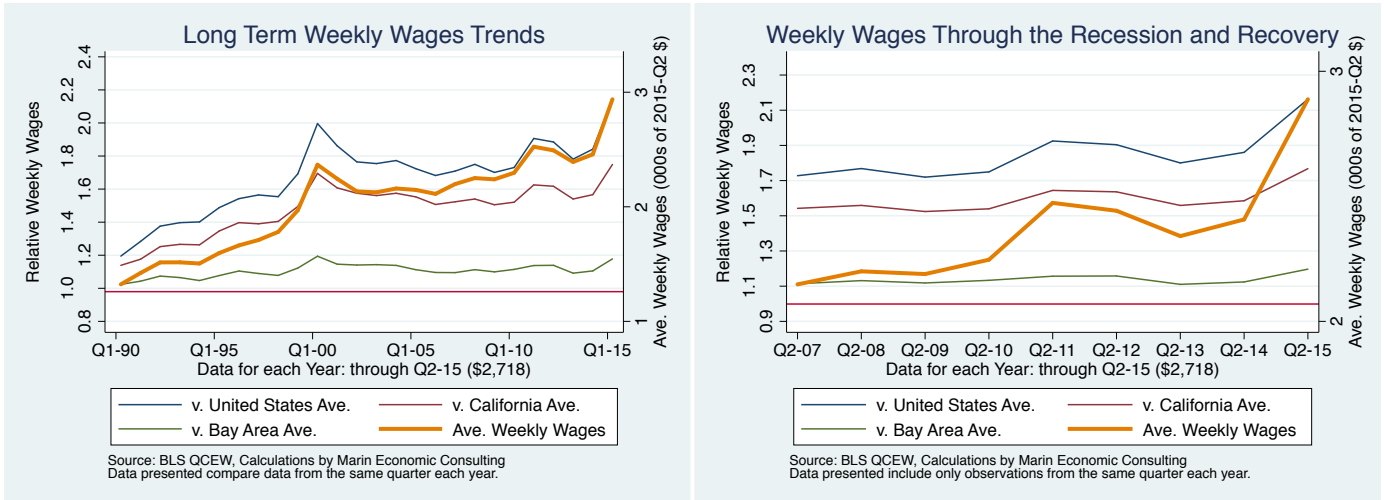


Figure 4: 1023: Financial activities

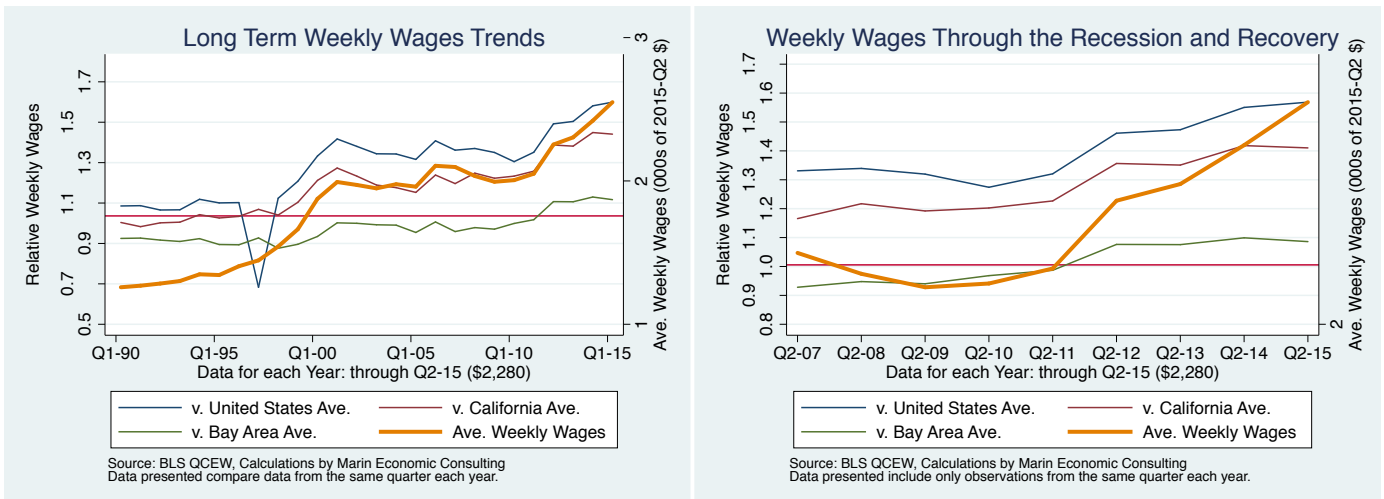


Figure 5: **10: All industries**

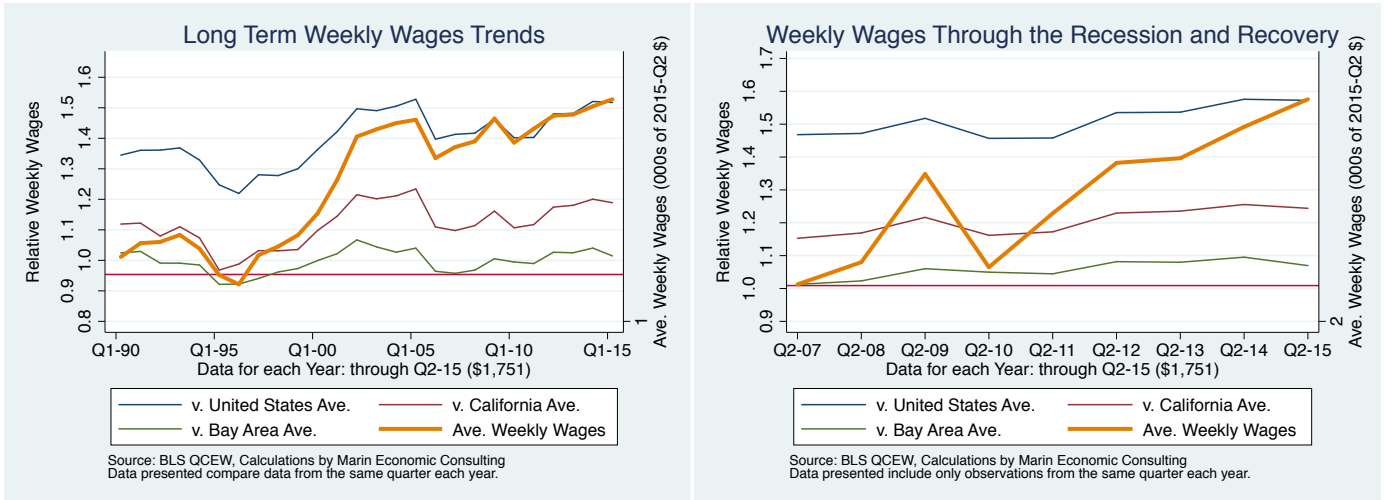


Figure 6: **1028: Public administration**

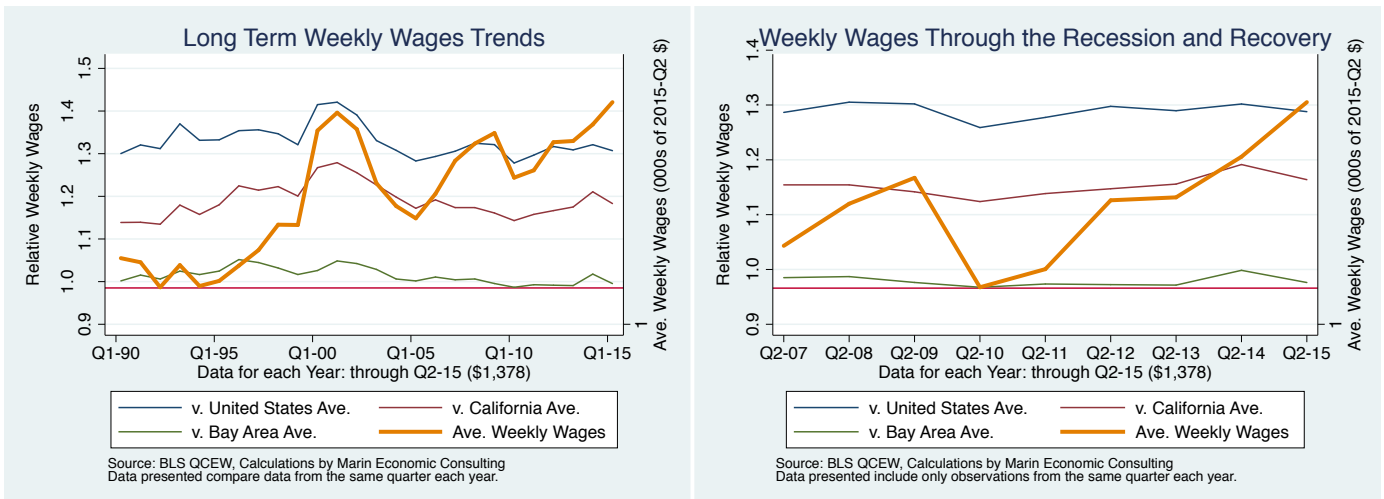


Figure 7: 1012: Construction

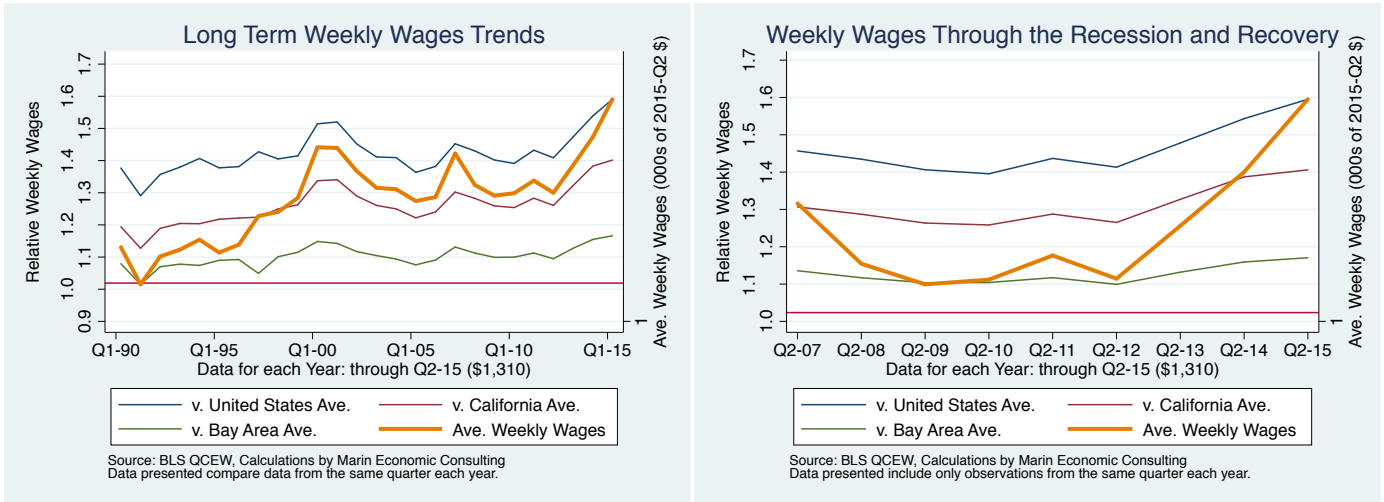


Figure 8: 1021: Trade, transportation, and utilities

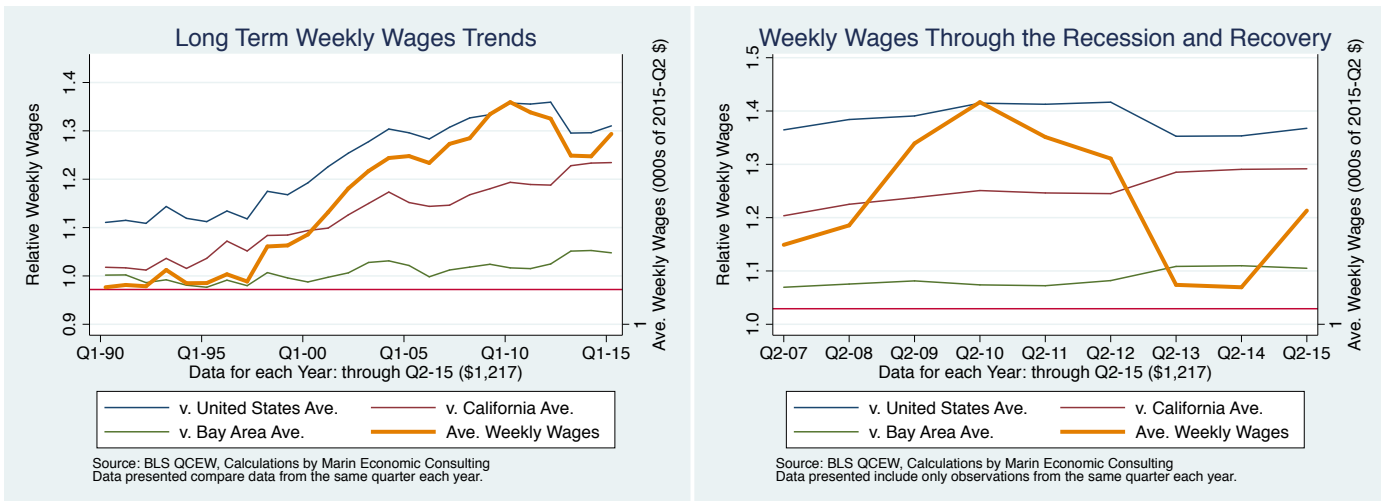


Figure 9: 1029: Unclassified

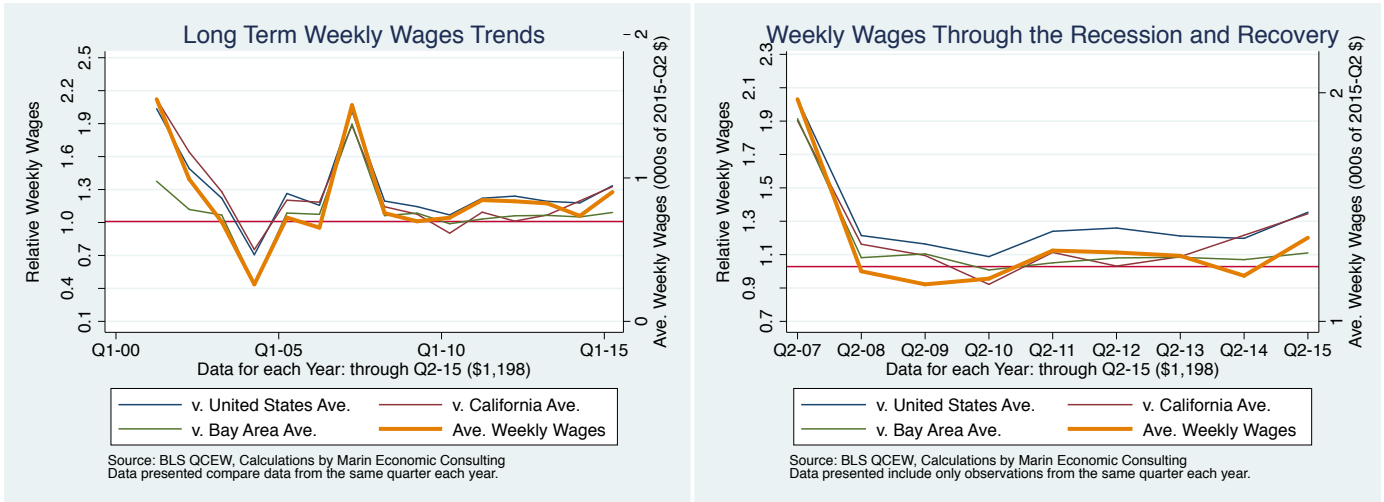


Figure 10: 1025: Education and health services

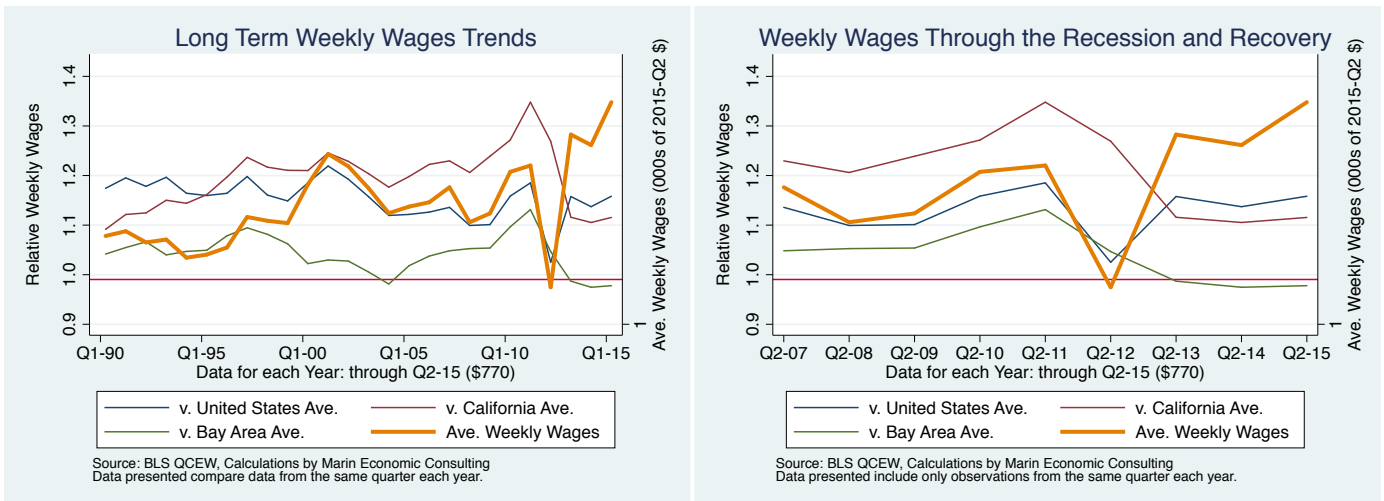


Figure 11: **1027: Other services**

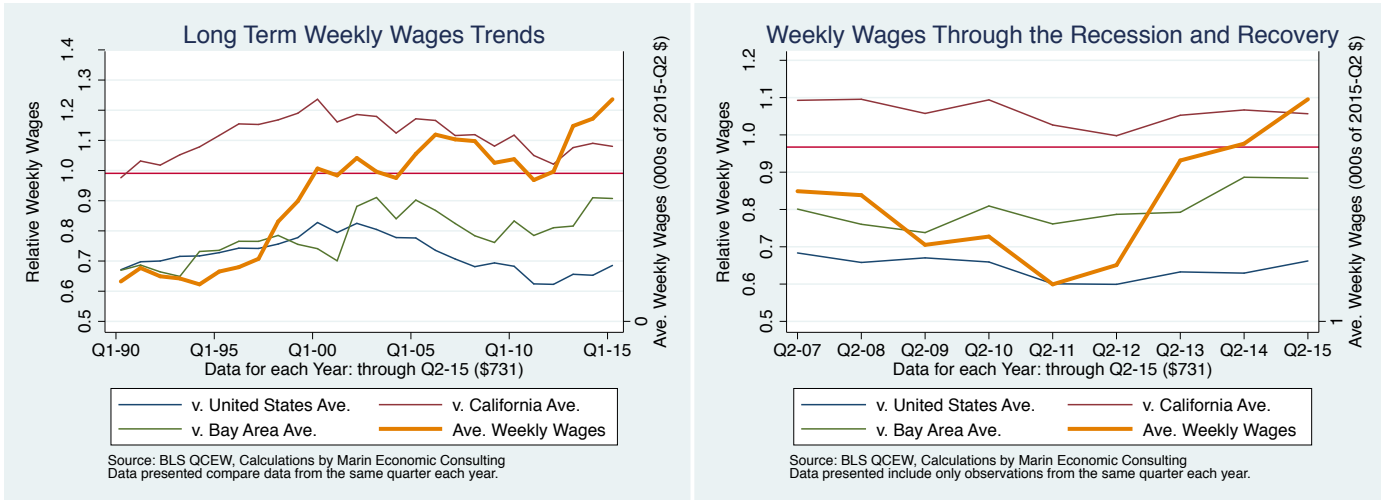


Figure 12: **1011: Natural resources and mining**

