

Stanislaus County Weekly Wages

Focus on Post-Recession Recovery

Q 3 – 2015 Update

Produced by:

Marin Economic Consulting

March 16, 2016

Jon Haveman, Principal

415-336-5705 or Jon@MarinEconomicConsulting.com

Contents

1. Descriptions and References	2
2. Overview of Wage Changes Since the Onset of the Great Recession	3
3. Weekly Wages Over Time	4
4. Graphical Display of Weekly Wage Evolution by Industry (Super Sector)	5

1. Descriptions and References

The contents of this report illustrate the evolution of Stanislaus County wage patterns over time. This report presents:

Wages: Average weekly wages for the industry in the region. They are inflation adjusted to current dollars using: Consumer Price Index for All Urban Consumers: All Items, from the FRED Database maintained by the St. Louis Federal Reserve Bank.

The data underlying this report are from the Bureau of Labor Statistics: Quarterly Census of Employment and Wages (QCEW). These data are available on a quarterly basis, generally with a 5 month lag from the end of the quarter to the release of the data.

QCEW: The Quarterly Census of Employment and Wages (QCEW) program publishes a quarterly count of employment and wages reported by employers covering 98 percent of U.S. jobs, available at the county, MSA, state and national levels by industry. <http://www.bls.gov/cew/home.htm>

Time Period: The data extend from Q1-1990 through Q 3 - 2015

Seasonality: There is a significant seasonal component to many industries. The QCEW data are not seasonally adjusted. Rather than seasonally adjusting the data, most comparisons in this report are between the same quarter in different years. The data presented are therefore the actual employment levels and wages (inflation adjusted) compared across years.

A particular focus of this report is on the post-Great Recession recovery. This is accomplished by comparing the most recent quarter of data to the same quarter in 2007, the last non-recessionary year for most of California and the United States.

Notes:

Notes: There are occasions where the data displayed seem to reflect implausible increases in either employment or wages. These changes are as reported in the QCEW data. For a closer look at these changes, please contact: Jon@MarinEconomicConsulting.com

2. Overview of Wage Changes Since the Onset of the Great Recession

Figure 2 - 1

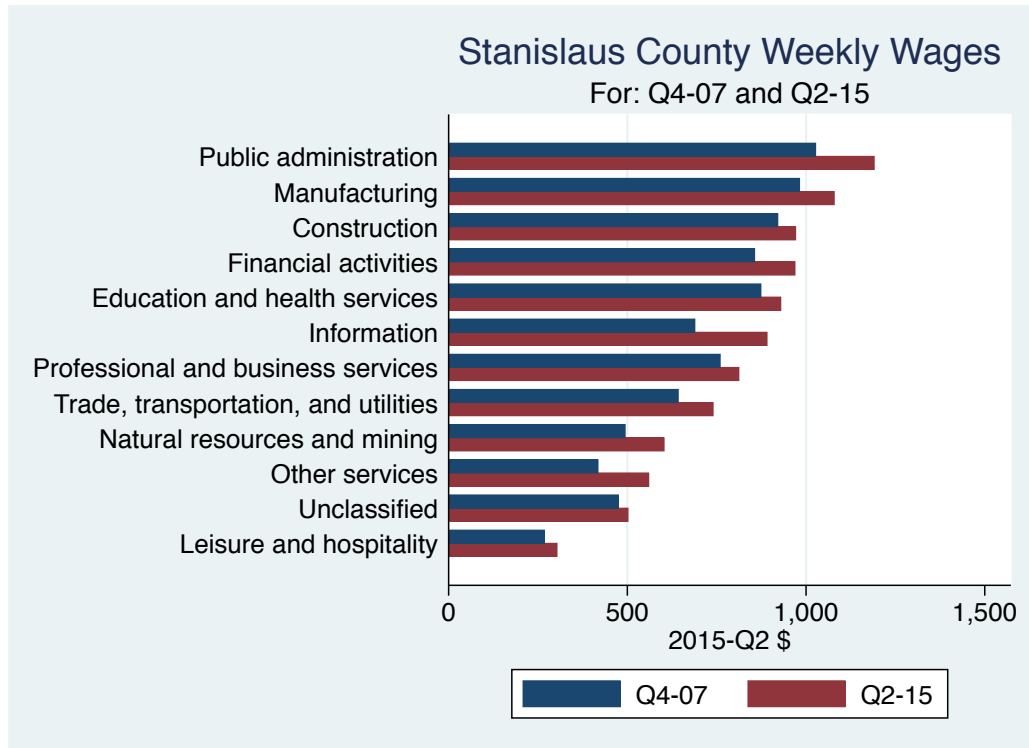


Table 2.1: Quarterly Summary for Q3 – 2015

Sector	Levels in Q3 – 2015		Change vs Q3 in 2007					
	Employment	Wages	Relative to:		Employment	Wages	Relative to:	
			Bay	U.S.			Bay	U.S.
Public administration	4,865	1,280.6	0.8	1.1	-1,811	212.83	-0.00	-0.01
Manufacturing	23,791	1,098.0	0.4	0.9	-2,291	240.00	0.01	0.07
Construction	8,758	1,015.0	0.7	0.9	-2,500	185.00	-0.01	-0.01
Education and health services	47,821	994.3	0.9	1.1	9,874	133.78	0.00	-0.02
Information	930	979.0	0.2	0.6	-1,413	357.00	-0.04	0.07
Financial activities	5,163	969.3	0.4	0.7	-981	153.20	-0.03	-0.01
All industries	182,926	840.0	0.5	0.9	3,897	143.00	-0.04	0.01
Professional and business services	14,100	801.7	0.4	0.6	-1,075	122.79	-0.06	-0.03
Trade, transportation, and utilities	37,699	746.6	0.7	0.9	2,253	112.10	-0.01	0.01
Natural resources and mining	15,598	650.0	0.8	0.6	1,295	196.00	0.15	0.08
Other services	4,344	558.0	0.7	0.8	-3,315	155.00	0.01	0.08
Unclassified	834	497.0	0.4	0.6	833	497.00	0.44	0.57
Leisure and hospitality	18,247	312.5	0.6	0.7	2,796	54.53	-0.01	0.02
Total	365,077							

Source: BLS, QCEW; Calculations by Marin Economic Consulting

3. Weekly Wages Over Time

Table3.1: Summary of Weekly Wages versus the Bay Area as A Whole

Sector	Q 3 – 2015		Relative Wages: Q 3 of Each Year					
	Employment	Wages	1990	1995	2001	2004	2007	2015
Public administration	4,865	1,280.6	0.81	0.83	0.73	0.78	0.77	0.76
Manufacturing	23,791	1,098.0	0.65	0.57	0.46	0.49	0.43	0.44
Construction	8,758	1,015.0	0.77	0.70	0.62	0.71	0.73	0.72
Education and health services	47,821	994.3	0.89	0.91	0.89	0.88	0.86	0.86
Information	930	979.0	0.73	0.57	0.48	0.34	0.28	0.23
Financial activities	5,163	969.3	0.65	0.58	0.53	0.54	0.47	0.44
All industries	182,926	840.0	0.70	0.64	0.57	0.60	0.57	0.52
Professional and business services	14,100	801.7	0.63	0.66	0.51	0.48	0.44	0.38
Trade, transportation, and utilities	37,699	746.6	0.73	0.73	0.68	0.71	0.67	0.65
Natural resources and mining	15,598	650.0	0.52	0.56	0.45	0.60	0.65	0.80
Other services	4,344	558.0	0.84	0.81	0.67	0.71	0.70	0.71
Unclassified	834	497.0			0.72	0.66	0.00	0.44
Leisure and hospitality	18,247	312.5	0.67	0.59	0.58	0.57	0.57	0.56

Source: BLS, QCEW; Calculations by Marin Economic Consulting

Table3.2: Summary of Weekly Wages versus California as A Whole

Sector	Q 3 – 2015		Relative Wages: Q 3 of Each Year					
	Employment	Wages	1990	1995	2001	2004	2007	2015
Public administration	4,865	1,280.6	0.85	0.88	0.82	0.85	0.86	0.85
Manufacturing	23,791	1,098.0	0.82	0.78	0.68	0.74	0.70	0.72
Construction	8,758	1,015.0	0.87	0.81	0.78	0.84	0.85	0.86
Education and health services	47,821	994.3	0.91	0.97	1.01	1.02	0.98	1.02
Information	930	979.0	0.74	0.63	0.59	0.44	0.39	0.38
Financial activities	5,163	969.3	0.71	0.67	0.65	0.65	0.60	0.58
All industries	182,926	840.0	0.79	0.78	0.74	0.76	0.75	0.74
Professional and business services	14,100	801.7	0.69	0.82	0.70	0.65	0.61	0.54
Trade, transportation, and utilities	37,699	746.6	0.81	0.81	0.80	0.82	0.79	0.80
Natural resources and mining	15,598	650.0	0.75	0.79	0.73	0.75	0.83	0.94
Other services	4,344	558.0	0.88	0.89	0.82	0.85	0.81	0.80
Unclassified	834	497.0			0.95	0.66	0.00	0.55
Leisure and hospitality	18,247	312.5	0.67	0.60	0.62	0.59	0.60	0.62

Source: BLS, QCEW; Calculations by Marin Economic Consulting

Table3.3: Summary of Weekly Wages versus the United States as A Whole

Sector	Q 3 – 2015		Relative Wages: Q 3 of Each Year					
	Employment	Wages	1990	1995	2001	2004	2007	2015
Public administration	4,865	1,280.6	1.05	1.09	1.03	1.08	1.10	1.09
Manufacturing	23,791	1,098.0	0.92	0.89	0.80	0.86	0.87	0.94
Construction	8,758	1,015.0	0.98	0.91	0.87	0.91	0.95	0.94
Education and health services	47,821	994.3	0.98	1.03	1.10	1.12	1.11	1.09
Information	930	979.0	0.85	0.71	0.76	0.57	0.50	0.57
Financial activities	5,163	969.3	0.76	0.73	0.75	0.76	0.68	0.67
All industries	182,926	840.0	0.87	0.85	0.84	0.86	0.85	0.86
Professional and business services	14,100	801.7	0.73	0.90	0.80	0.73	0.68	0.65
Trade, transportation, and utilities	37,699	746.6	0.93	0.92	0.90	0.92	0.88	0.89
Natural resources and mining	15,598	650.0	0.52	0.53	0.50	0.53	0.55	0.63
Other services	4,344	558.0	0.94	0.89	0.80	0.81	0.76	0.84
Unclassified	834	497.0			0.84	0.64	0.00	0.57
Leisure and hospitality	18,247	312.5	0.80	0.67	0.73	0.73	0.73	0.75

Source: BLS, QCEW; Calculations by Marin Economic Consulting

4. Graphical Display of Weekly Wage Evolution by Industry (Super Sector)

Graphs present only Q 3 data for each year.

Figure 4 - 1: 1028: Public administration

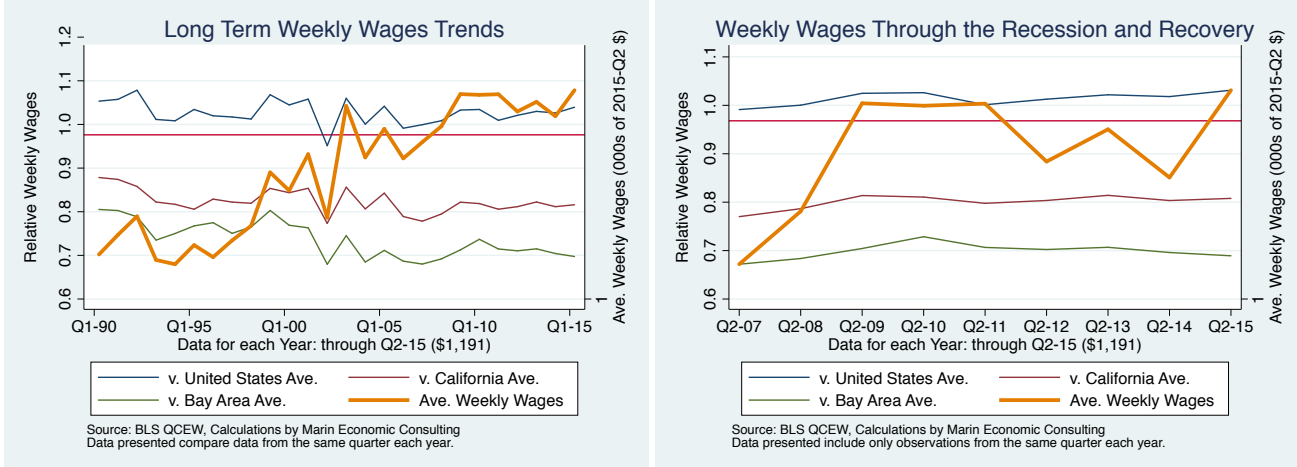


Figure 4 - 2: 1013: Manufacturing

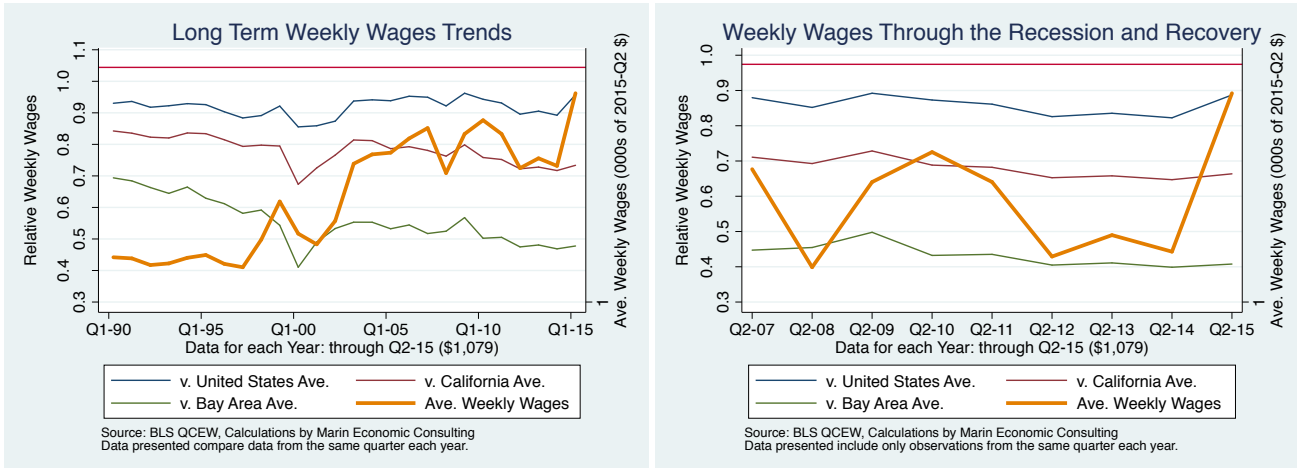


Figure 4 - 3: 1012: Construction

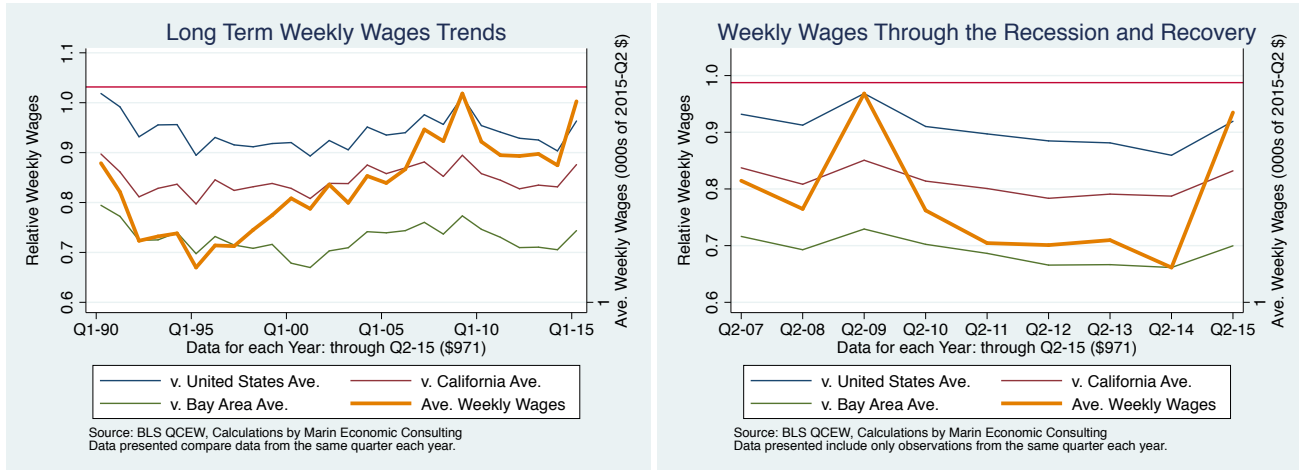


Figure 4 - 4: 1025: Education and health services

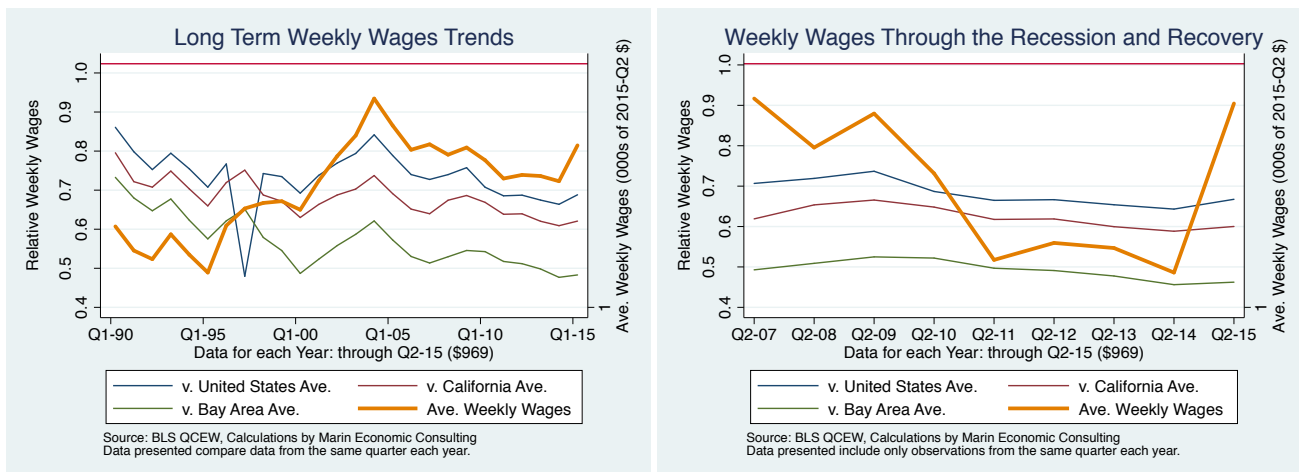


Figure 4 - 5: 1022: Information

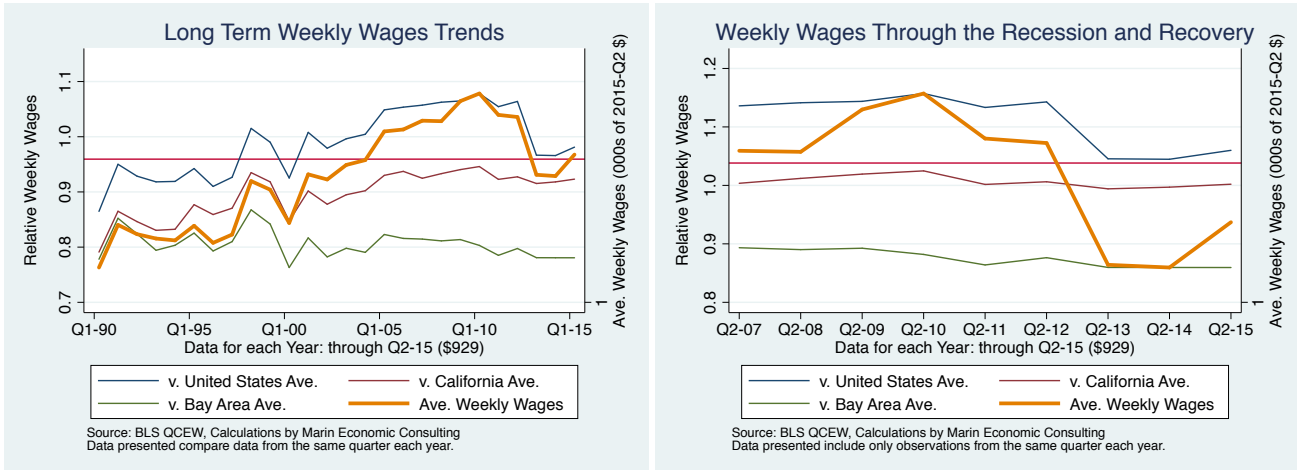


Figure 4 - 6: 1023: Financial activities

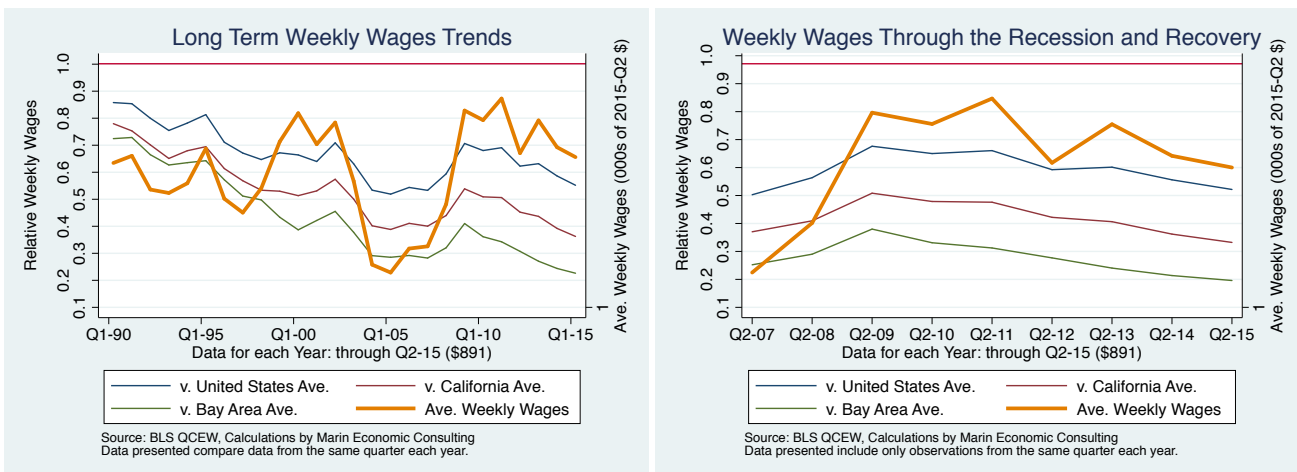


Figure 4 - 7: 10: All industries

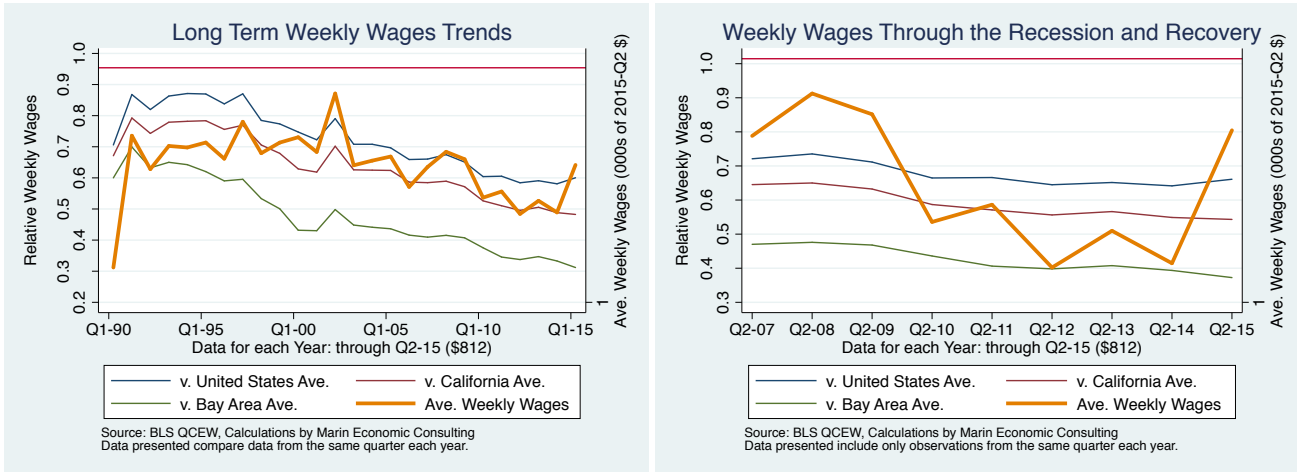


Figure 4 - 8: 1024: Professional and business services

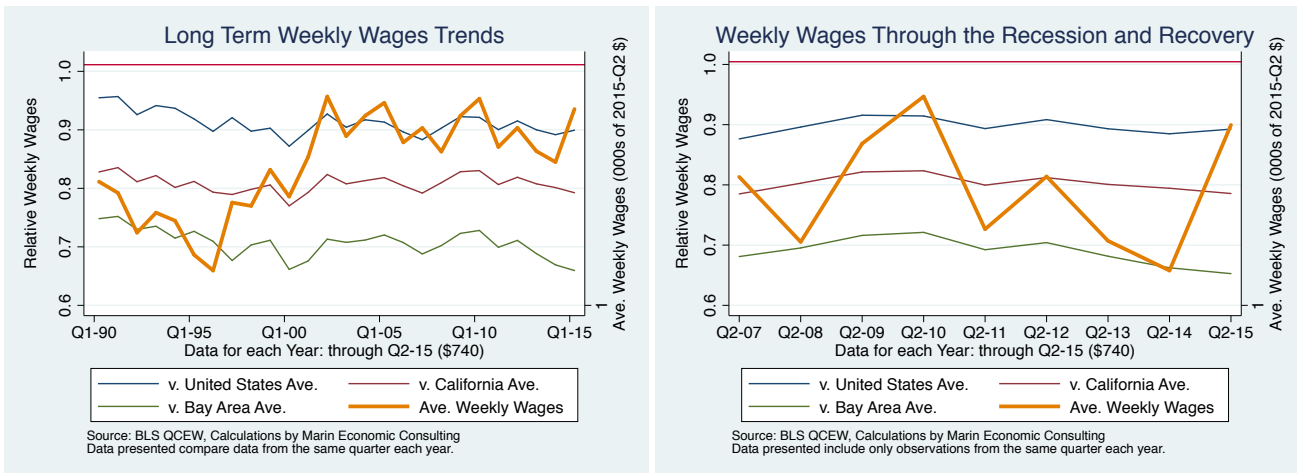


Figure 4 - 9: 1021: Trade, transportation, and utilities

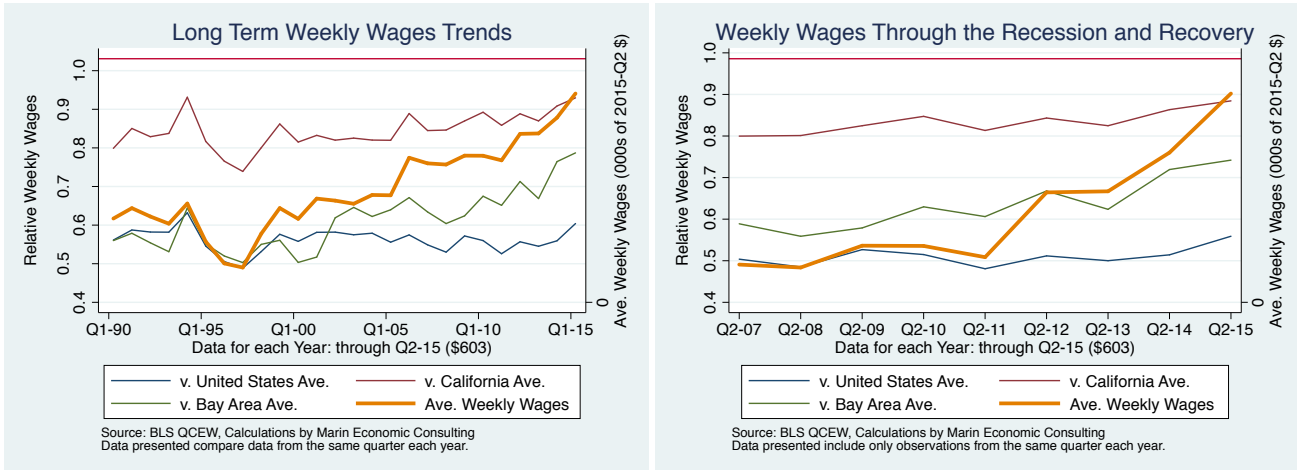


Figure 4 - 10: 1011: Natural resources and mining

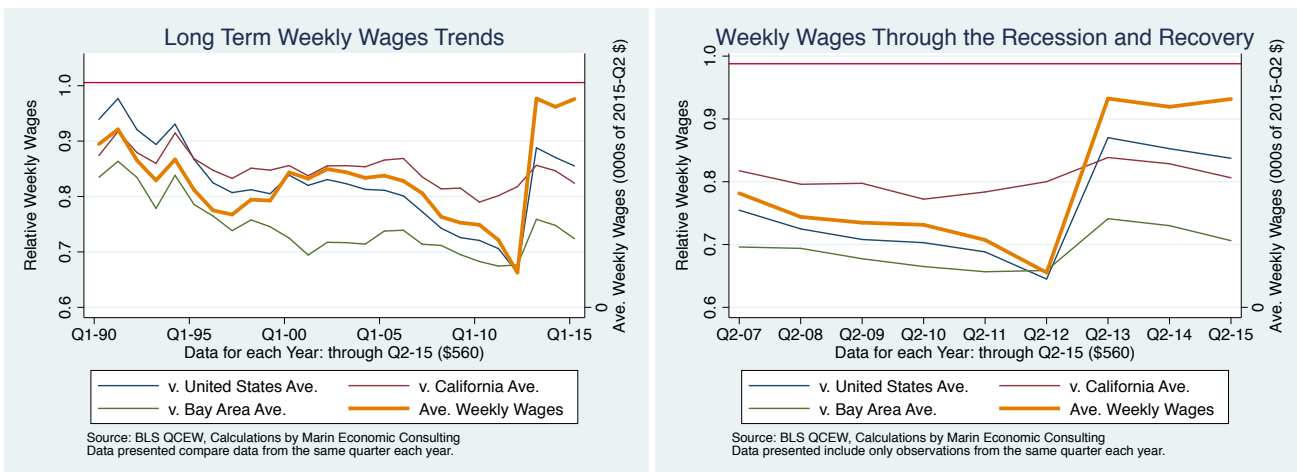


Figure 4 - 11: 1027: Other services

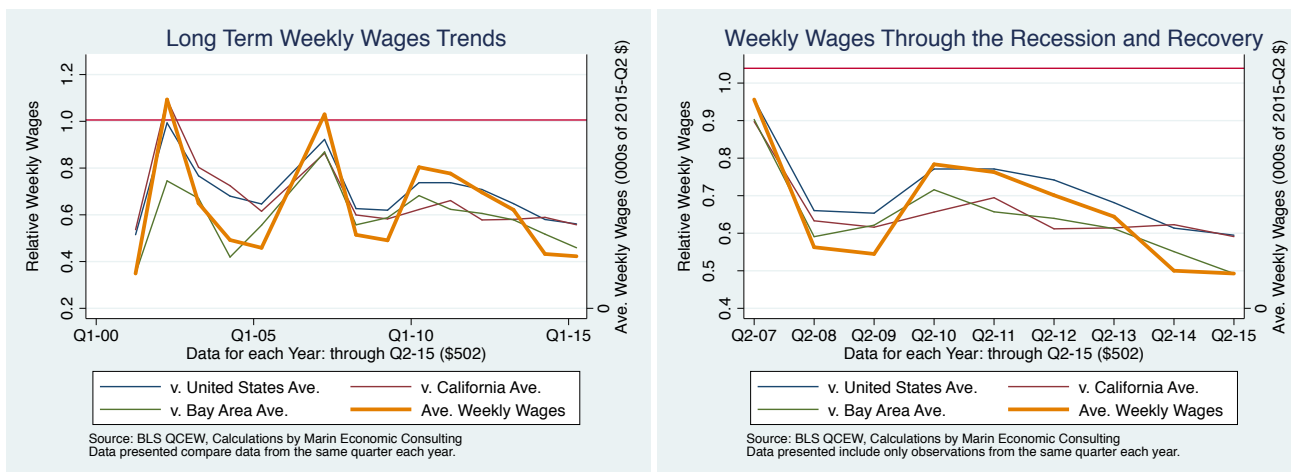


Figure 4 - 12: 1029: Unclassified

