

Yolo County Weekly Wages

Focus on Post-Recession Recovery

Q 3 – 2015 Update

Produced by:

Marin Economic Consulting

March 16, 2016

Jon Haveman, Principal

415-336-5705 or Jon@MarinEconomicConsulting.com

Contents

1. Descriptions and References	2
2. Overview of Wage Changes Since the Onset of the Great Recession	3
3. Weekly Wages Over Time	4
4. Graphical Display of Weekly Wage Evolution by Industry (Super Sector)	5

1. Descriptions and References

The contents of this report illustrate the evolution of Yolo County wage patterns over time. This report presents:

Wages: Average weekly wages for the industry in the region. They are inflation adjusted to current dollars using: Consumer Price Index for All Urban Consumers: All Items, from the FRED Database maintained by the St. Louis Federal Reserve Bank.

The data underlying this report are from the Bureau of Labor Statistics: Quarterly Census of Employment and Wages (QCEW). These data are available on a quarterly basis, generally with a 5 month lag from the end of the quarter to the release of the data.

QCEW: The Quarterly Census of Employment and Wages (QCEW) program publishes a quarterly count of employment and wages reported by employers covering 98 percent of U.S. jobs, available at the county, MSA, state and national levels by industry. <http://www.bls.gov/cew/home.htm>

Time Period: The data extend from Q1-1990 through Q 3 - 2015

Seasonality: There is a significant seasonal component to many industries. The QCEW data are not seasonally adjusted. Rather than seasonally adjusting the data, most comparisons in this report are between the same quarter in different years. The data presented are therefore the actual employment levels and wages (inflation adjusted) compared across years.

A particular focus of this report is on the post-Great Recession recovery. This is accomplished by comparing the most recent quarter of data to the same quarter in 2007, the last non-recessionary year for most of California and the United States.

Notes:

Notes: There are occasions where the data displayed seem to reflect implausible increases in either employment or wages. These changes are as reported in the QCEW data. For a closer look at these changes, please contact: Jon@MarinEconomicConsulting.com

2. Overview of Wage Changes Since the Onset of the Great Recession

Figure 2 - 1

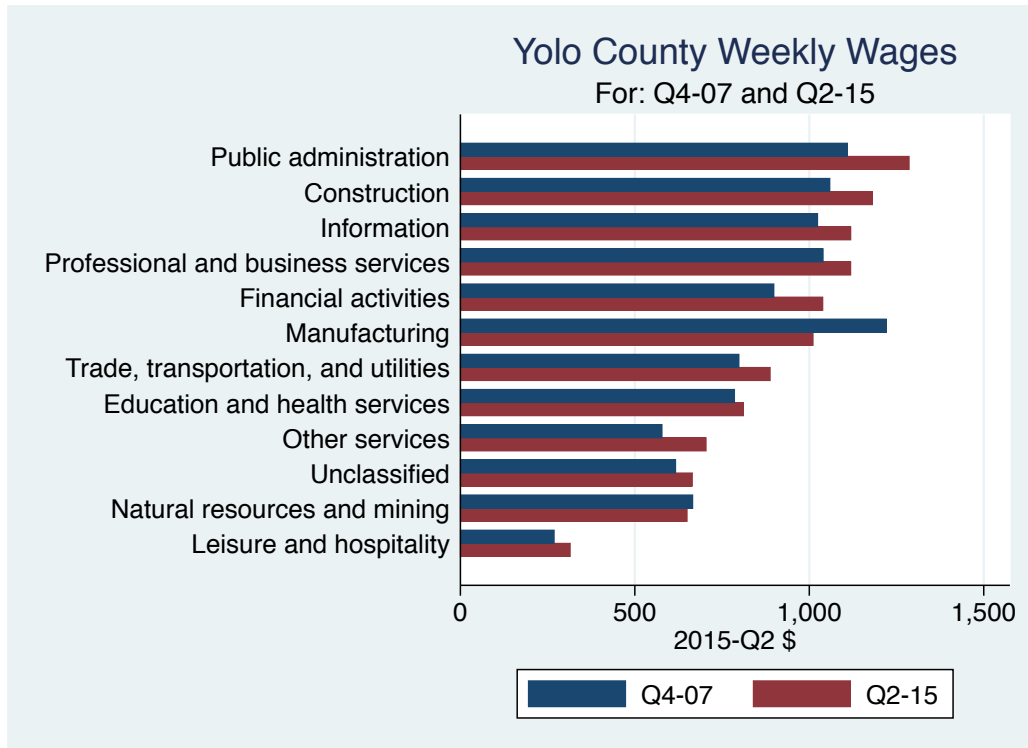


Table 2.1: Quarterly Summary for Q 3 – 2015

Sector	Levels in Q 3 – 2015		Change vs Q 3 in 2007					
	Employment	Wages	Relative to:		Employment	Wages	Relative to:	
			Bay	U.S.			Bay	U.S.
Public administration	4,780	1,377.6	0.8	1.2	109	421.69	0.13	0.19
Construction	3,533	1,233.0	0.9	1.1	-2,593	133.00	-0.09	-0.12
Information	1,020	1,165.0	0.3	0.7	-179	214.00	-0.15	-0.09
Professional and business services	8,483	1,090.1	0.5	0.9	229	167.81	-0.08	-0.04
Financial activities	2,573	1,026.6	0.5	0.7	-1,756	165.26	-0.03	-0.01
Manufacturing	6,714	1,016.0	0.4	0.9	182	132.00	-0.03	-0.03
All industries	102,588	1,006.0	0.6	1.0	-2,246	246.00	0.01	0.10
Trade, transportation, and utilities	21,542	897.3	0.8	1.1	-1,328	149.55	0.00	0.03
Education and health services	13,587	782.2	0.7	0.9	2,408	19.23	-0.08	-0.13
Unclassified	308	754.0	0.7	0.9	305	157.00	-0.07	0.10
Natural resources and mining	6,546	747.0	0.9	0.7	1,127	184.00	0.12	0.04
Other services	2,382	722.1	0.9	1.1	-836	154.25	-0.07	0.02
Leisure and hospitality	7,680	322.0	0.6	0.8	799	61.00	0.00	0.03
Total	181,737							

Source: BLS, QCEW; Calculations by Marin Economic Consulting

3. Weekly Wages Over Time

Table3.1: Summary of Weekly Wages versus the Bay Area as A Whole

Sector	Q 3 – 2015		Relative Wages: Q 3 of Each Year					
	Employment	Wages	1990	1995	2001	2004	2007	2015
Public administration	4,780	1,377.6	0.72	0.71	0.70	0.74	0.69	0.82
Construction	3,533	1,233.0	0.88	0.88	0.92	0.98	0.96	0.87
Information	1,020	1,165.0	0.75	0.71	0.56	0.50	0.42	0.28
Professional and business services	8,483	1,090.1	0.71	0.77	0.55	0.63	0.59	0.52
Financial activities	2,573	1,026.6	0.62	0.65	0.54	0.50	0.49	0.46
Manufacturing	6,714	1,016.0	0.71	0.64	0.60	0.51	0.44	0.41
All industries	102,588	1,006.0	0.80	0.80	0.67	0.69	0.62	0.63
Trade, transportation, and utilities	21,542	897.3	0.88	0.88	0.77	0.87	0.79	0.79
Education and health services	13,587	782.2	0.83	0.89	0.72	0.75	0.76	0.68
Unclassified	308	754.0			0.36	1.00	0.74	0.67
Natural resources and mining	6,546	747.0	0.74	0.84	0.81	0.94	0.80	0.92
Other services	2,382	722.1	0.97	0.94	0.90	0.92	0.99	0.92
Leisure and hospitality	7,680	322.0	0.69	0.67	0.57	0.61	0.58	0.58

Source: BLS, QCEW; Calculations by Marin Economic Consulting

Table3.2: Summary of Weekly Wages versus California as A Whole

Sector	Q 3 – 2015		Relative Wages: Q 3 of Each Year					
	Employment	Wages	1990	1995	2001	2004	2007	2015
Public administration	4,780	1,377.6	0.76	0.75	0.78	0.81	0.77	0.92
Construction	3,533	1,233.0	1.00	1.02	1.15	1.16	1.13	1.04
Information	1,020	1,165.0	0.76	0.79	0.70	0.66	0.60	0.45
Professional and business services	8,483	1,090.1	0.79	0.96	0.76	0.86	0.82	0.74
Financial activities	2,573	1,026.6	0.68	0.74	0.66	0.61	0.63	0.62
Manufacturing	6,714	1,016.0	0.88	0.88	0.88	0.77	0.72	0.66
All industries	102,588	1,006.0	0.90	0.96	0.87	0.89	0.82	0.89
Trade, transportation, and utilities	21,542	897.3	0.97	0.98	0.91	1.00	0.93	0.96
Education and health services	13,587	782.2	0.85	0.95	0.81	0.86	0.87	0.80
Unclassified	308	754.0			0.48	1.01	0.68	0.83
Natural resources and mining	6,546	747.0	1.05	1.19	1.32	1.19	1.03	1.09
Other services	2,382	722.1	1.01	1.03	1.10	1.10	1.15	1.03
Leisure and hospitality	7,680	322.0	0.70	0.68	0.61	0.63	0.61	0.64

Source: BLS, QCEW; Calculations by Marin Economic Consulting

Table3.3: Summary of Weekly Wages versus the United States as A Whole

Sector	Q 3 – 2015		Relative Wages: Q 3 of Each Year					
	Employment	Wages	1990	1995	2001	2004	2007	2015
Public administration	4,780	1,377.6	0.94	0.93	0.98	1.03	0.98	1.17
Construction	3,533	1,233.0	1.12	1.15	1.29	1.26	1.26	1.14
Information	1,020	1,165.0	0.88	0.89	0.89	0.85	0.77	0.67
Professional and business services	8,483	1,090.1	0.82	1.06	0.87	0.96	0.92	0.88
Financial activities	2,573	1,026.6	0.73	0.81	0.75	0.71	0.72	0.71
Manufacturing	6,714	1,016.0	1.00	1.01	1.04	0.91	0.89	0.87
All industries	102,588	1,006.0	1.00	1.06	0.98	1.00	0.93	1.03
Trade, transportation, and utilities	21,542	897.3	1.11	1.11	1.02	1.12	1.04	1.07
Education and health services	13,587	782.2	0.91	1.01	0.88	0.95	0.98	0.86
Unclassified	308	754.0			0.42	0.97	0.76	0.86
Natural resources and mining	6,546	747.0	0.73	0.80	0.90	0.84	0.69	0.73
Other services	2,382	722.1	1.08	1.04	1.07	1.05	1.07	1.08
Leisure and hospitality	7,680	322.0	0.83	0.76	0.71	0.78	0.74	0.77

Source: BLS, QCEW; Calculations by Marin Economic Consulting

4. Graphical Display of Weekly Wage Evolution by Industry (Super Sector)

Graphs present only Q 3 data for each year.

Figure 4 - 1: 1028: Public administration

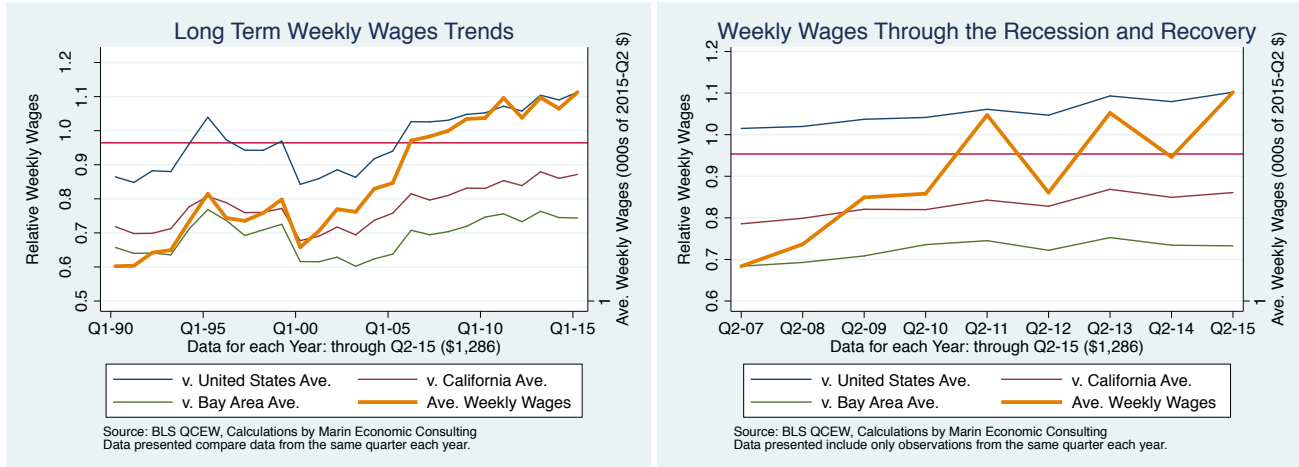


Figure 4 - 2: 1012: Construction

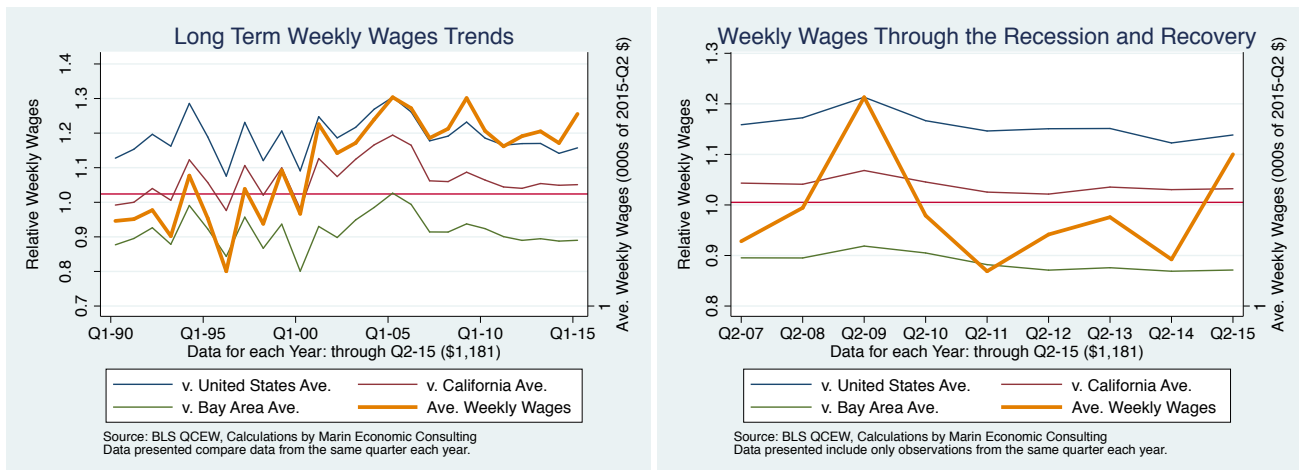


Figure 4 - 3: 1022: Information

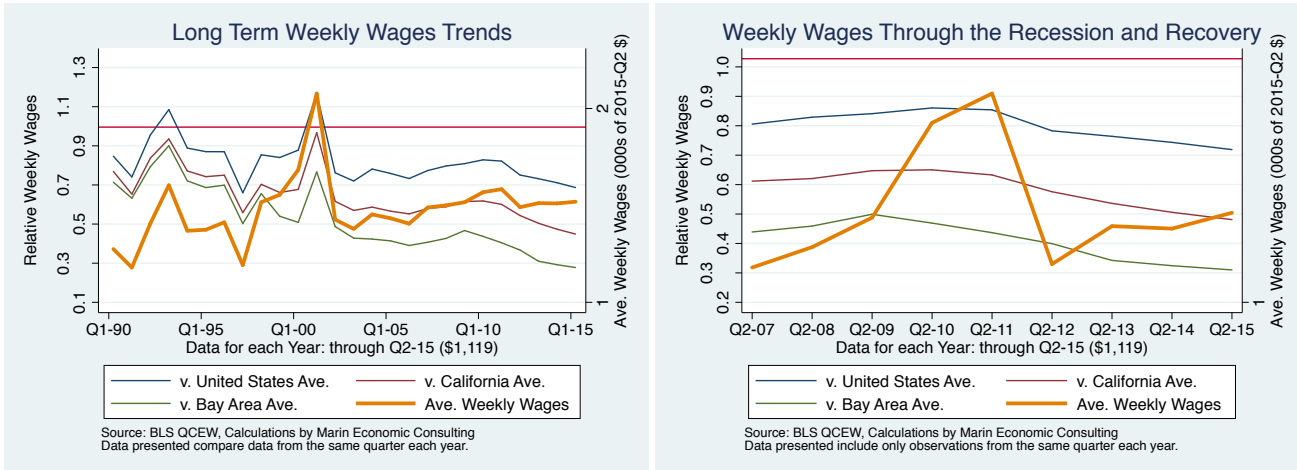


Figure 4 - 4: 1024: Professional and business services

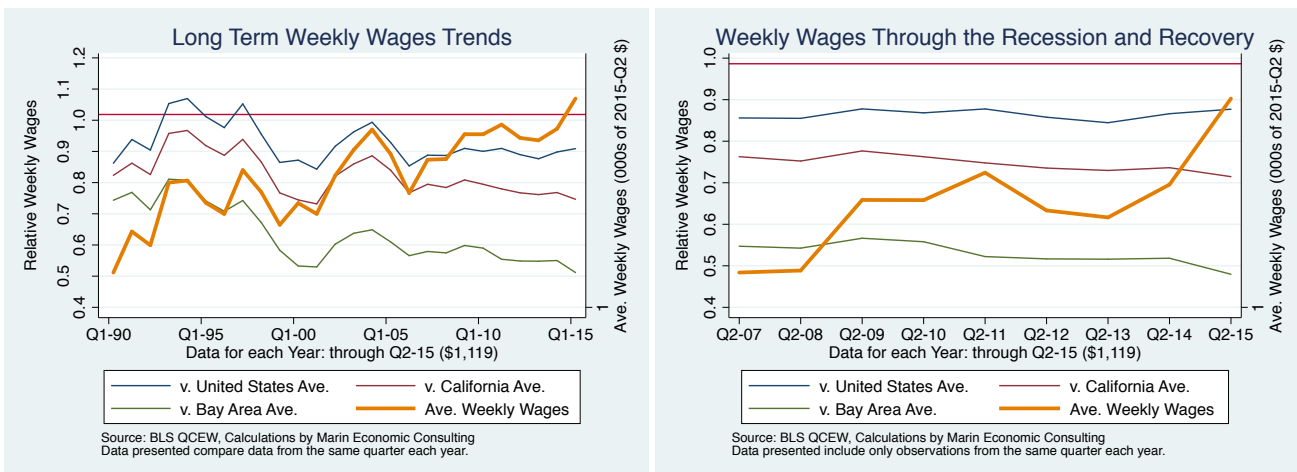


Figure 4 - 5: 1023: Financial activities

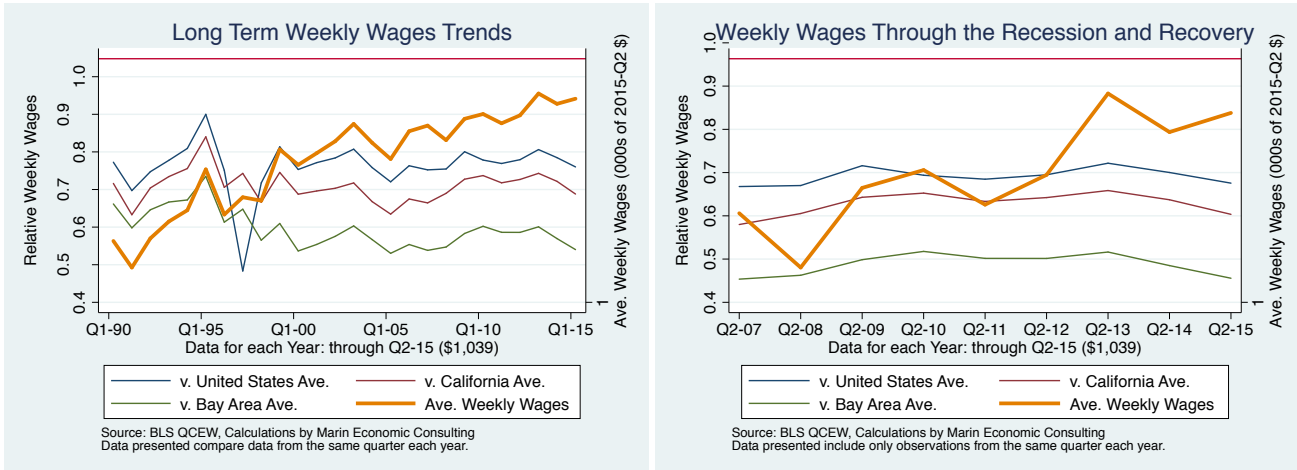


Figure 4 - 6: 1013: Manufacturing

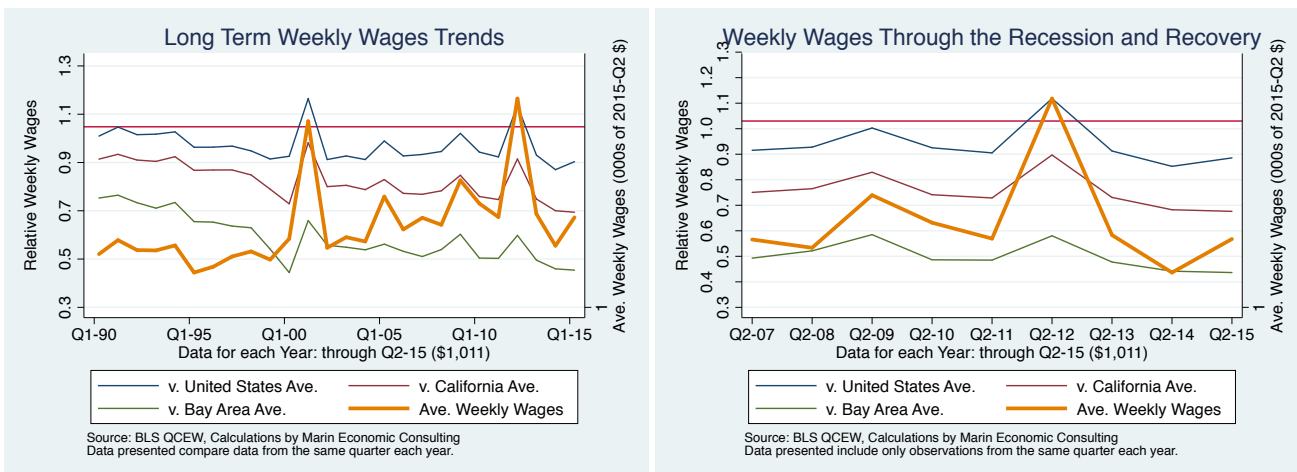


Figure 4 - 7: 10: All industries

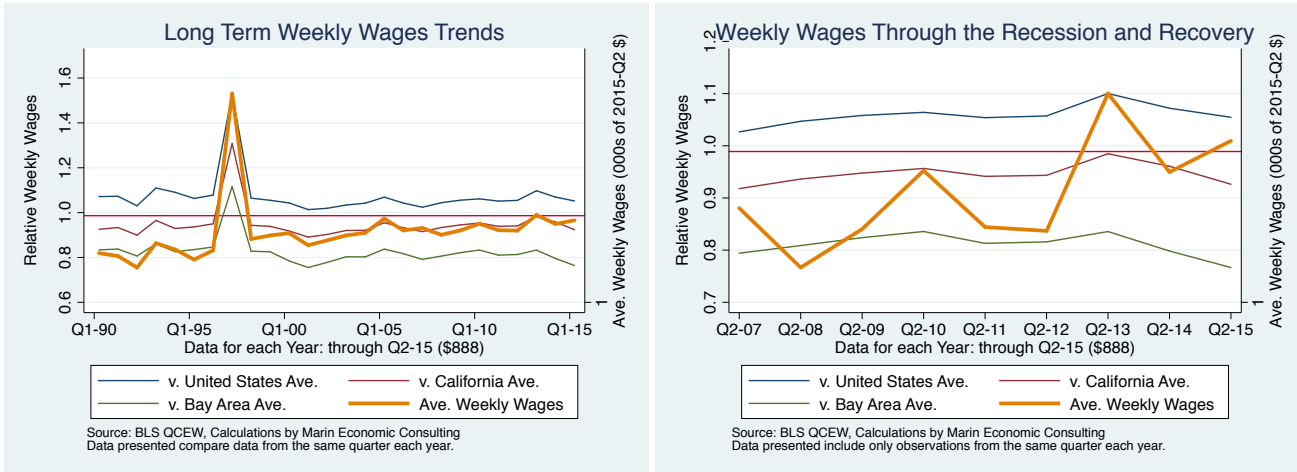


Figure 4 - 8: 1021: Trade, transportation, and utilities

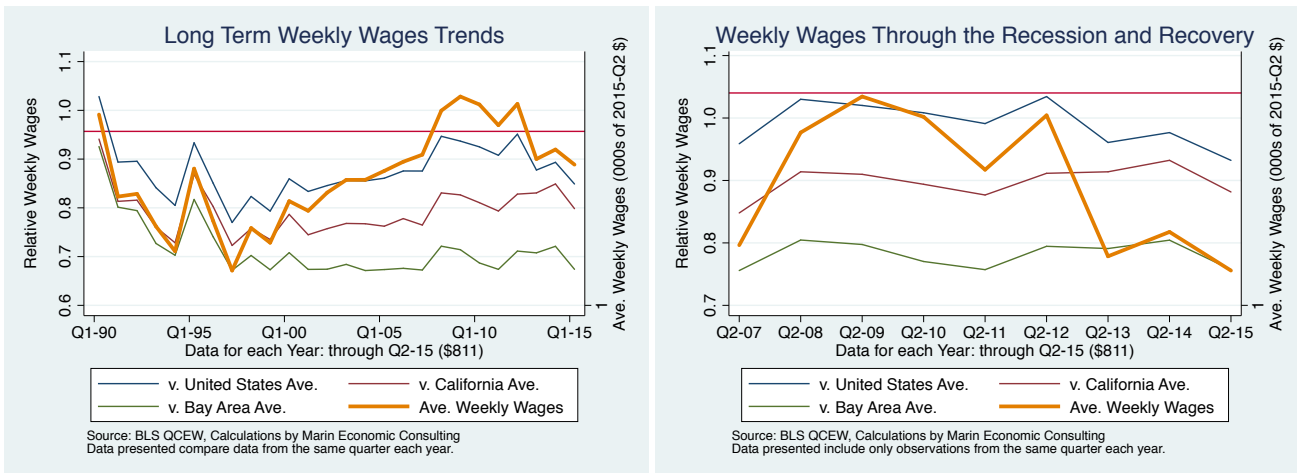


Figure 4 - 9: 1025: Education and health services

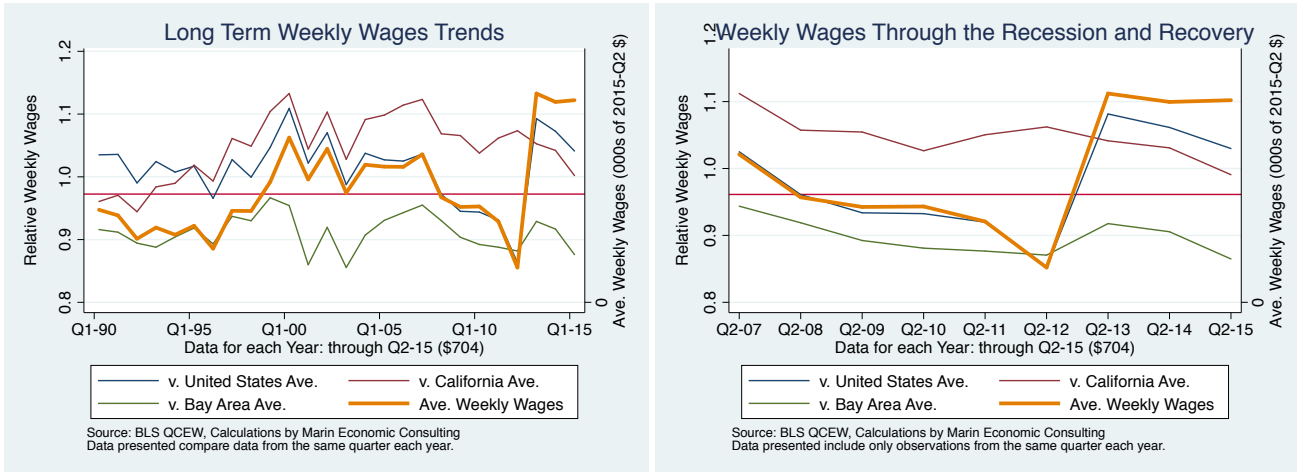


Figure 4 - 10: 1029: Unclassified

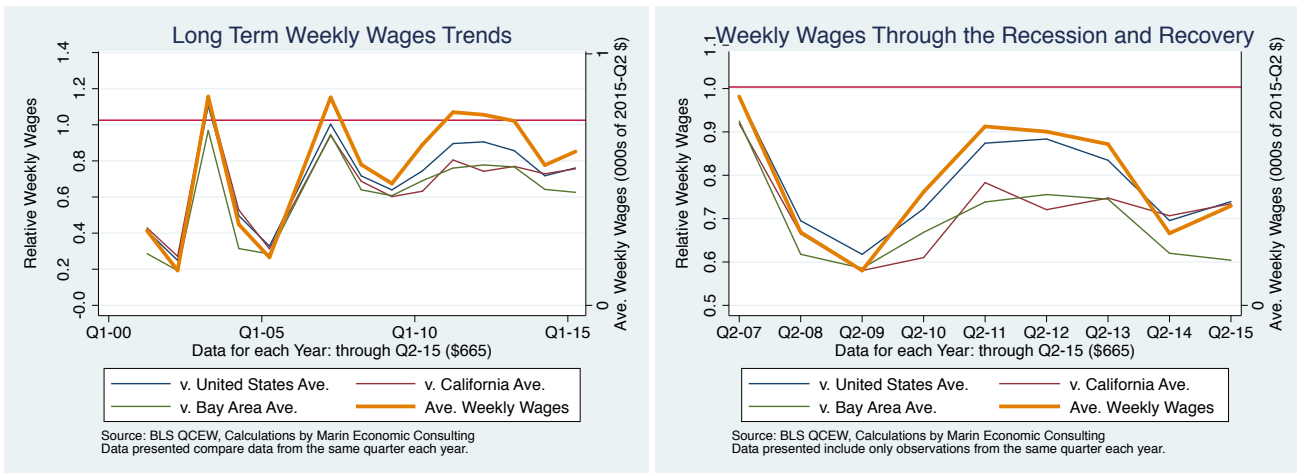


Figure 4 - 11: 1011: Natural resources and mining

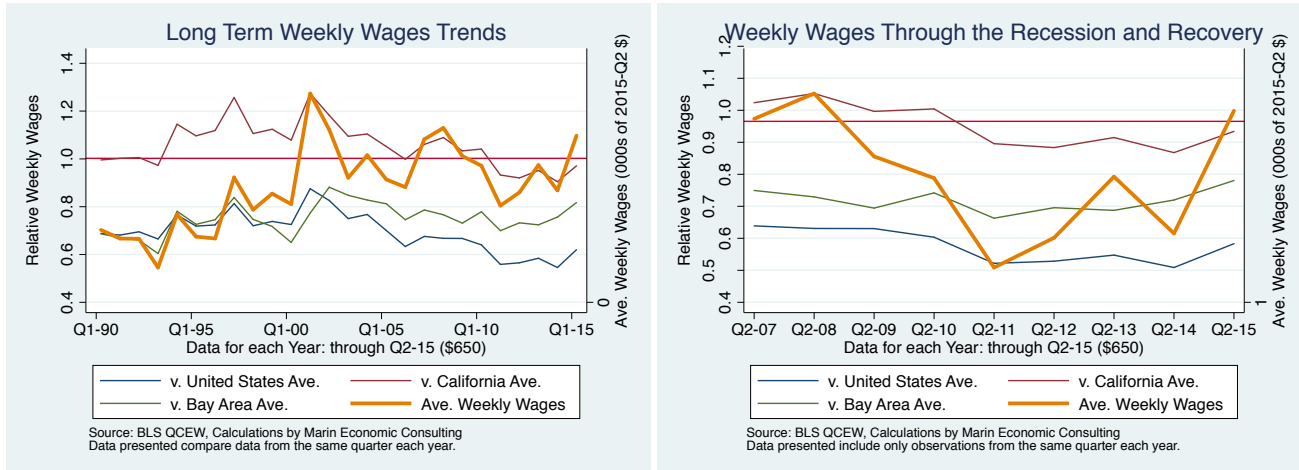


Figure 4 - 12: 1027: Other services

