

# San Mateo County Migration Patterns

---

American Community Survey  
Summary Files

Produced by

Marin Economic Consulting

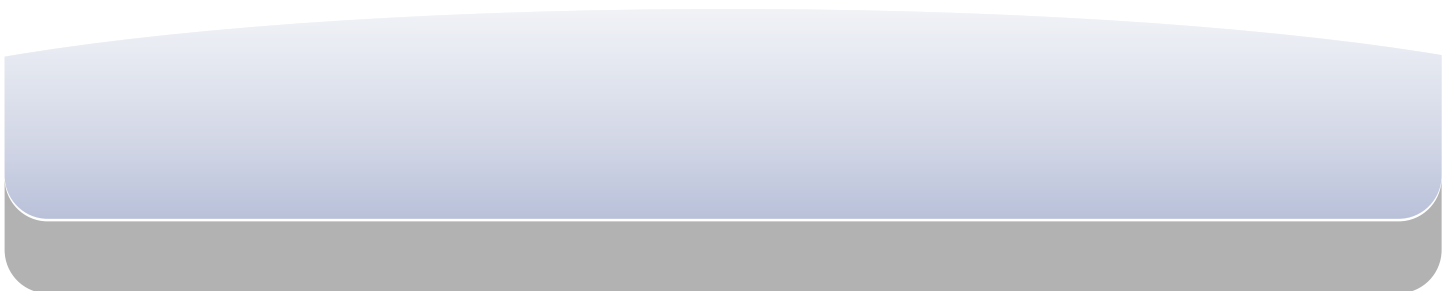
June 12, 2024

Jon Haveman, Principal

415-336-5705 or [Jon@MarinEconomicConsulting.com](mailto:Jon@MarinEconomicConsulting.com)

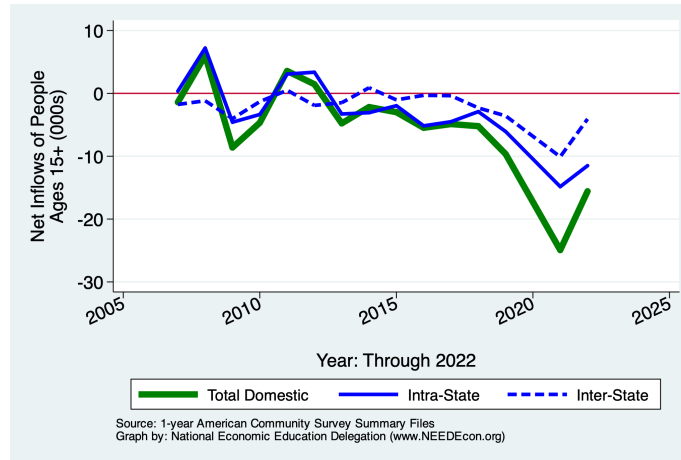
## Contents

1. Overall Migration Flows	2
2. Demographics of Overall Migration Flows	4



## 1. Overall Migration Flows

Figure 1 - 1: Overall Movements of Residents



**Table 1.1: Migration by Income**

Category	Population	Net Inflows				From Abroad
		All Migration	Same State		Across States	
			W/in County	Between Counties		
No income	80,678	497	0	-1,181	-1,097	2,775
With income	533,533	-7,520	0	-10,322	-2,979	5,781
\$1 to \$9,999 or less	56,797	-1,500	0	-2,029	-898	1,427
\$10,000 to \$14,999	28,956	-1,624	0	-573	-1,288	237
\$15,000 to \$24,999	44,041	-1,749	0	-1,857	-850	958
\$25,000 to \$34,999	41,734	-907	0	-1,858	133	818
\$35,000 to \$49,999	57,392	520	0	-229	525	224
\$50,000 to \$64,999	47,659	1,372	0	700	306	366
\$65,000 to \$74,999	23,358	-977	0	-558	-521	102
\$75,000 or more	233,596	-2,655	0	-3,918	-386	1,649
<b>All:</b>	614,211	-7,023	0	-11,503	-4,076	8,556

Source: 2022 1-year American Community Survey, Summary File

Figure 1 - 2: Overall Movements of Low-Income Residents  
 Figure 1 - 3: Overall Movements of Middle-Income Residents

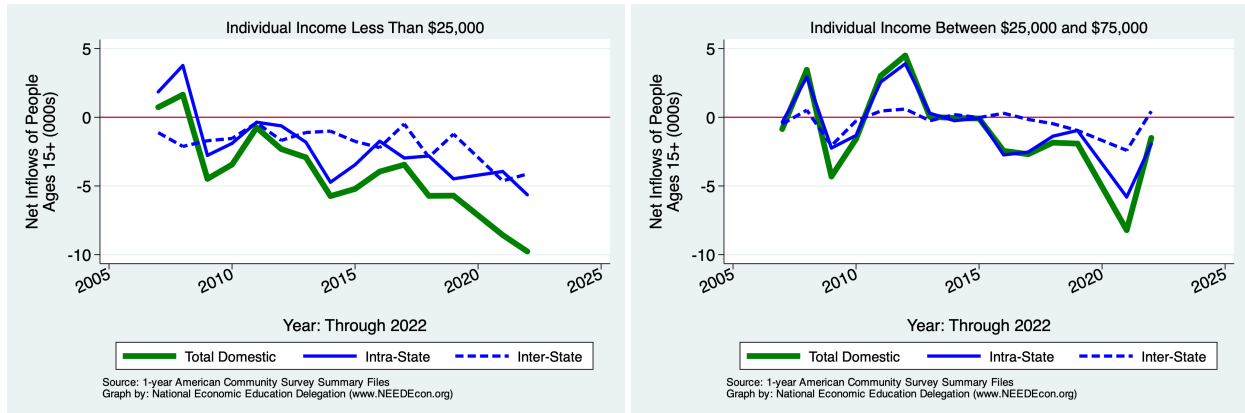
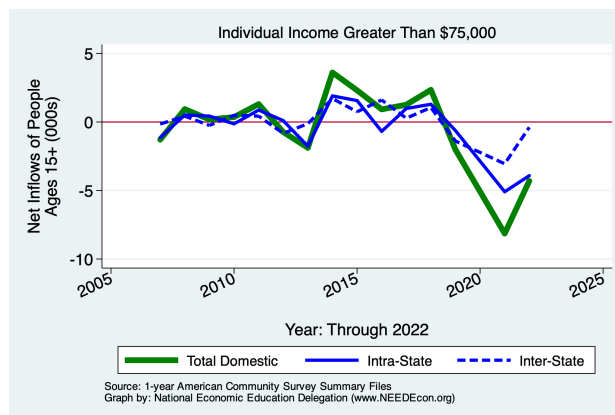


Figure 1 - 4: Overall Movements of High-Income Residents



## 2. Demographics of Migration Flows

**Table 2.1: Migration by Marital Status**

Category	Population	All Migration	Net Inflows		Across States	From Abroad
			W/in County	Between Counties		
Never married	219,122	232	0	-3,149	189	3,192
Now married, except separated	308,847	-5,063	0	-6,744	-3,391	5,072
Divorced	45,179	-2,024	0	-1,518	-551	45
Separated	11,443	41	0	-127	168	0
Widowed	29,620	-209	0	35	-491	247
<b>Total:</b>	614,211	-7,023	0	-11,503	-4,076	8,556

Source: 2022 1-year American Community Survey, Summary File

**Table 2.2: Migration by Tenure**

Category	Population	All Migration	Net Inflows		Across States	From Abroad
			W/in County	Between Counties		
Householder lived in owner-occupied housing units	436,639	-11,938	0	-9,041	-4,902	2,005
Householder lived in renter-occupied housing units	272,791	5,178	0	-4,324	1,056	8,446
<b>Total:</b>	709,430	-6,760	0	-13,365	-3,846	10,451

Source: 2022 1-year American Community Survey, Summary File

Figure 2 - 1: Domestic Movements of Residents by Tenure

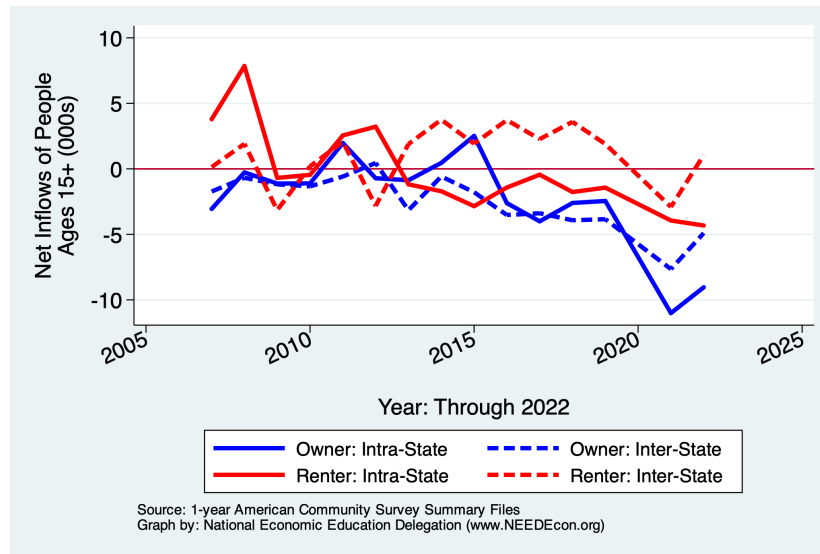


Table 2.3: Migration by Age

Category	Population	Net Inflows				
		All Migration	Same State		Across States	From Abroad
			W/in County	Between Counties		
1 to 4 years	27,845	-954	0	-1,324	-407	777
5 to 17 years	104,696	-2,447	0	-2,697	-1,050	1,300
18 and 19 years	14,358	-3,539	0	-2,145	-1,510	116
20 to 24 years	37,967	302	0	-1,895	100	2,097
25 to 29 years	46,741	522	0	-1,404	508	1,418
30 to 34 years	55,274	2,002	0	-530	744	1,788
35 to 39 years	54,381	-286	0	-568	-412	694
40 to 44 years	52,609	-1,536	0	-1,263	-688	415
45 to 49 years	48,588	-290	0	-660	32	338
50 to 54 years	50,182	-1,516	0	-650	-995	129
55 to 59 years	46,387	-1,082	0	-1,198	-77	193
60 to 64 years	47,592	126	0	-28	-314	468
65 to 69 years	41,949	-298	0	-462	-133	297
70 to 74 years	33,417	-1,206	0	-724	-799	317
75 years and over	59,238	214	0	391	-463	286
<b>Total Population:</b>	<b>721,224</b>	<b>-9,988</b>	<b>0</b>	<b>-15,157</b>	<b>-5,464</b>	<b>10,633</b>

Source: 2022 1-year American Community Survey, Summary File

Table 2.4: Migration by Educational Attainment

Category	Population	Net Inflows				
		All Migration	Same State		Across States	From Abroad
			W/in County	Between Counties		
Less than high school graduate	53,786	2,966	0	142	1,204	1,620
High school graduate (includes equiv)	78,769	-2,563	0	-1,483	-1,344	264
Some college or assoc. degree	113,669	-2,296	0	-2,135	-1,603	1,442
Bachelor's degree	153,895	-2,813	0	-2,789	-1,343	1,319
Graduate or professional degree	136,239	1,356	0	-831	489	1,698
<b>Total:</b>	<b>536,358</b>	<b>-3,350</b>	<b>0</b>	<b>-7,096</b>	<b>-2,597</b>	<b>6,343</b>

Source: 2022 1-year American Community Survey, Summary File

**Table 2.5: Median Income of Migration Flows**

Flow	In-Migration	Out-Migration
Same House 1 Year Ago	61,983	61,983
Moved Within Same County	61,811	61,811
Moved to Different County, Same State	75,589	66,646
Moved Between States	61,158	46,168
Moved from Abroad	30,195	
<b>Total Population:</b>	61,987	61,917

Source: 2022 1-year American Community Survey, Summary File

**Table 2.6: Median Age of Migration Flows**

Flow	In-Migration	Out-Migration
Same House 1 Year Ago	44.2	44.2
Moved Within Same County	32.9	32.9
Moved to Different County, Same State	31.5	30.4
Moved Between States	29.9	31.1
Moved from Abroad	29.2	
<b>Total Population:</b>	41.8	41.7

Source: 2022 1-year American Community Survey, Summary File